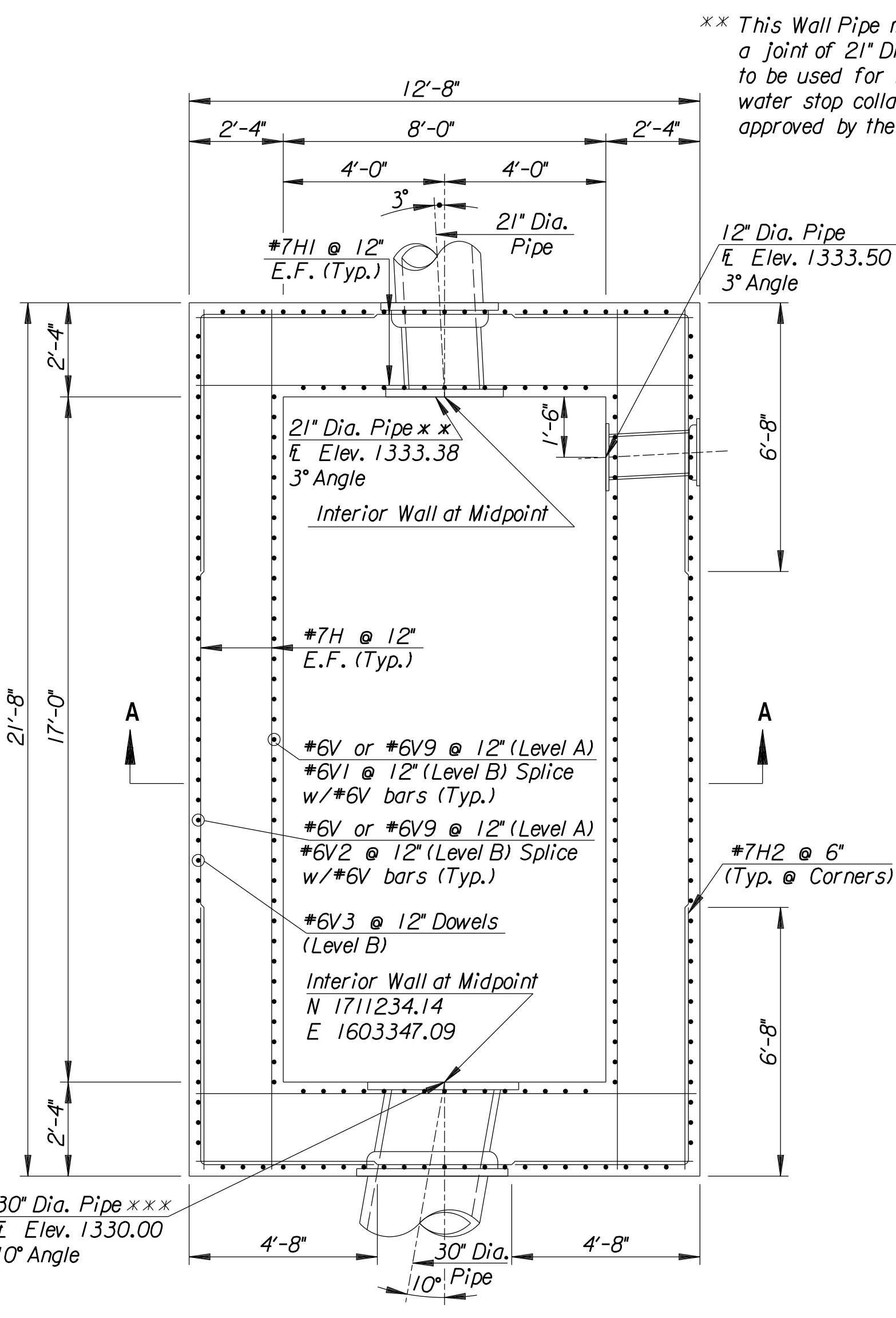
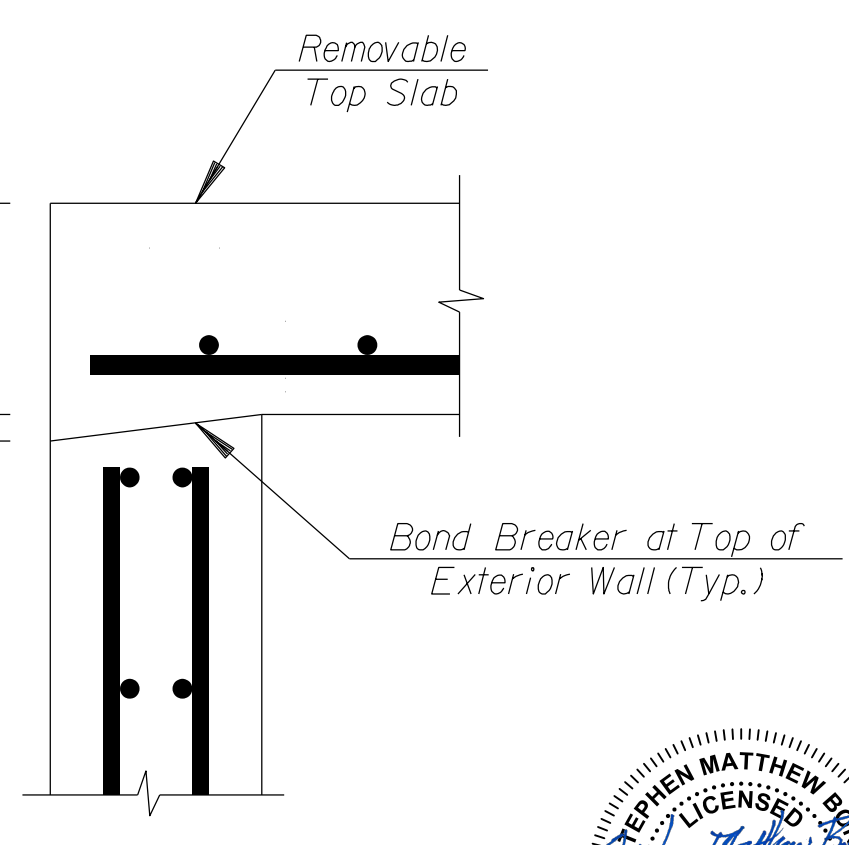
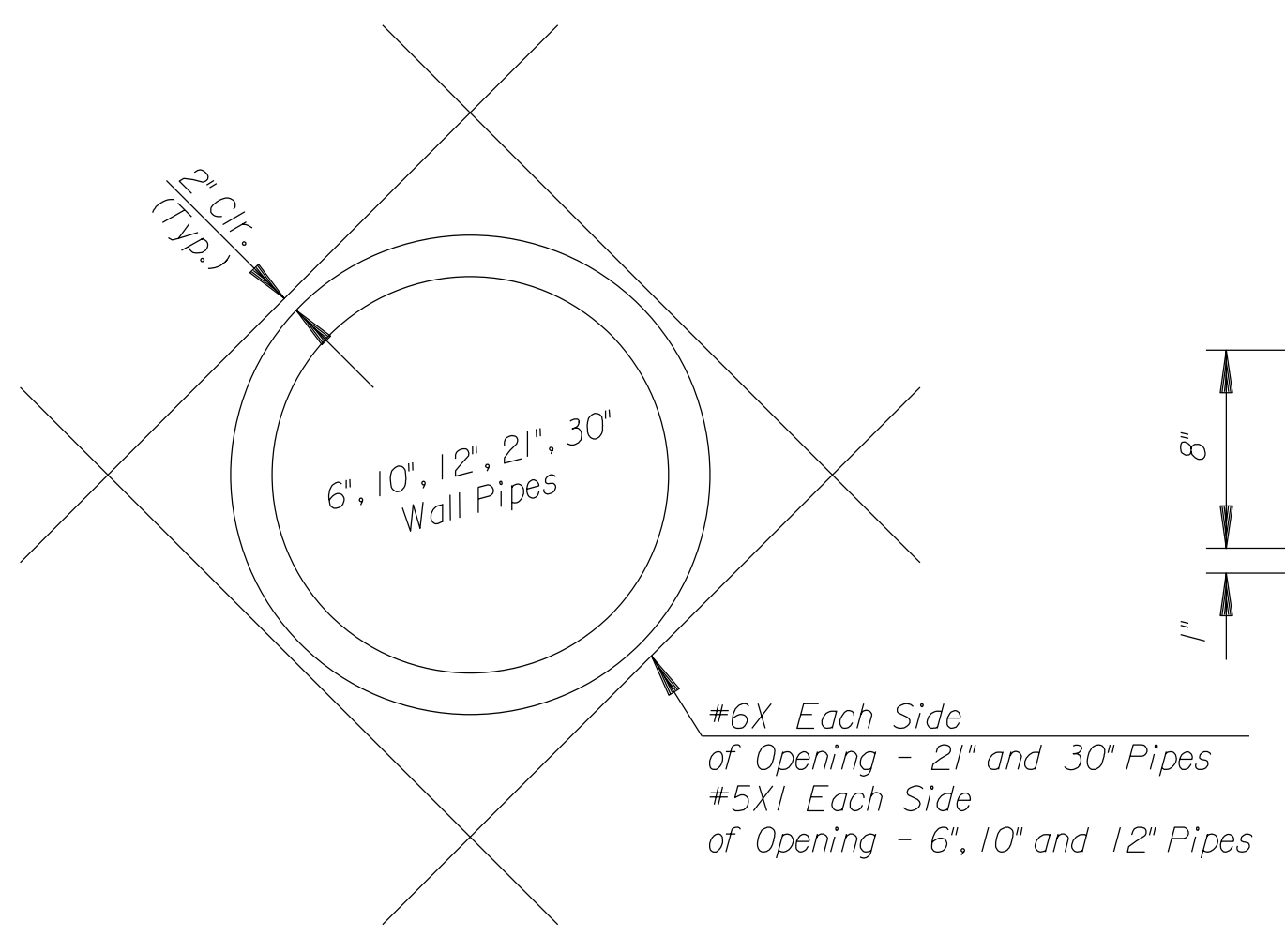
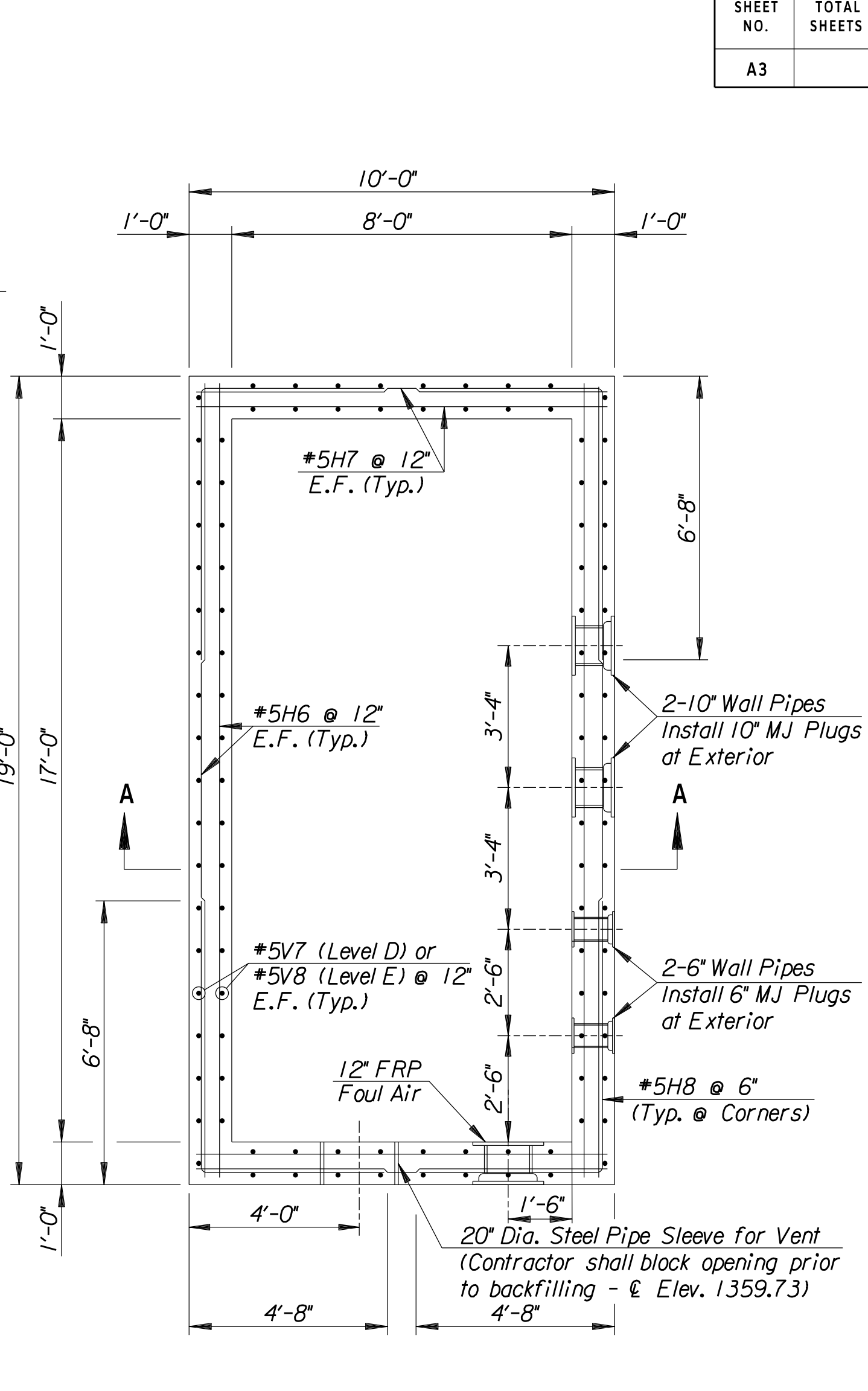
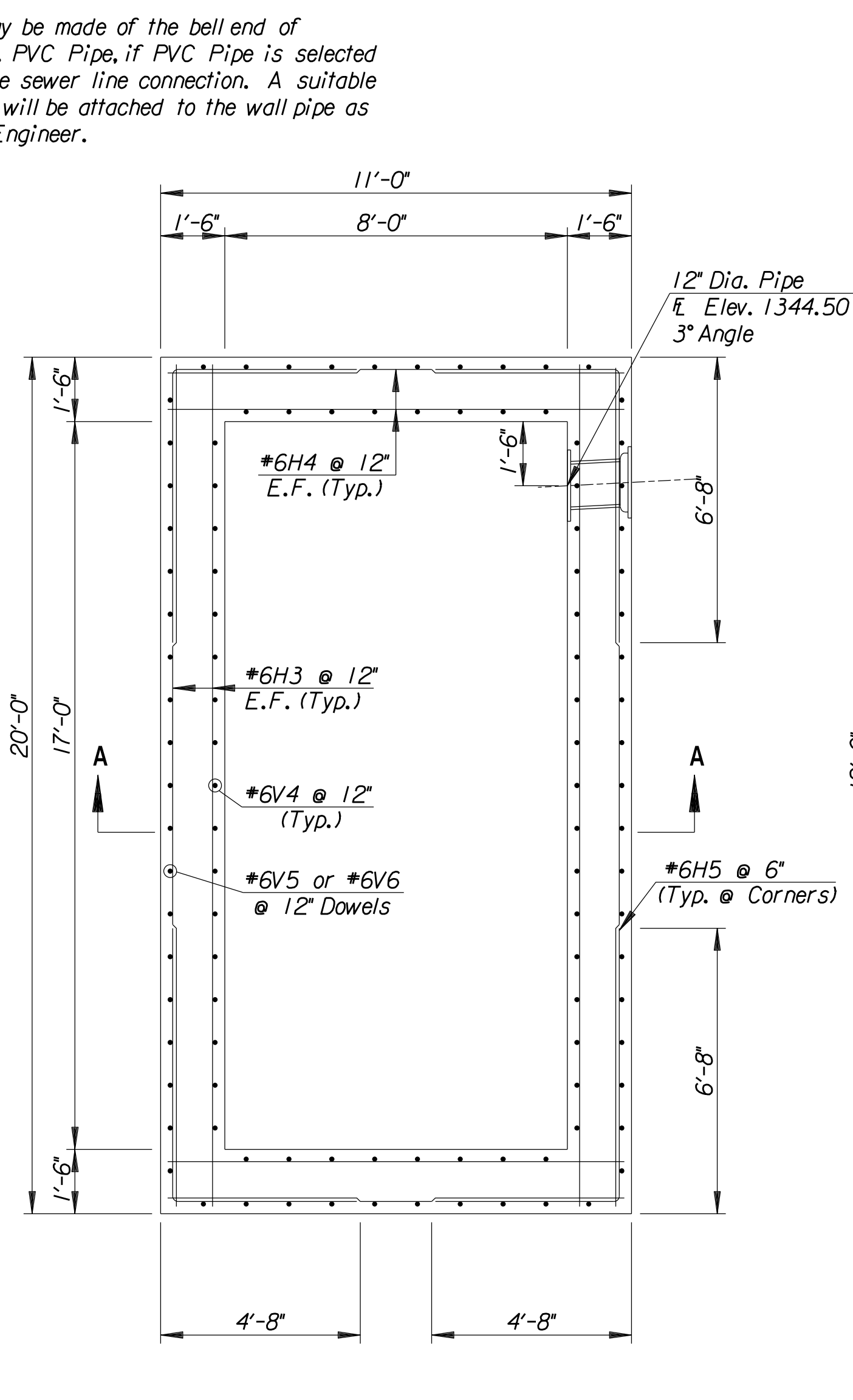


\* The whole inside surface of the Wet Well above Elev. 1327.50 shall be lined with Spectrashield Interior Lining System as specified in Section 02602.



\*\*\* This Wall Pipe may be made of the bell end of a joint of 30" Dia. PVC Pipe, if PVC Pipe is selected to be used for the sewer line connection. A suitable water stop collar will be attached to the wall pipe as approved by the Engineer.



ELEVATIONS AND OPENINGS		SMB	9/21/2023
No.	Revisions	By	Date
SEWAGE TREATMENT PLANT NO. 3 (NW)			
<b>WET WELL</b>			
 Professional Engineering Consultants, P.A. 303 S. TOPEKA • WICHITA, KANSAS 67202 316-262-2691 • FAX 316-262-3003			
Designed by	RWA	Checked by	RAS
Drawn by	BJS	Date	Nov., 2000
		Job No.	99452-14

Drawn by: BJS  
 Plotted by: bjs 10-31-2000  
 i:/1999/99452/014/wetwell.dgn