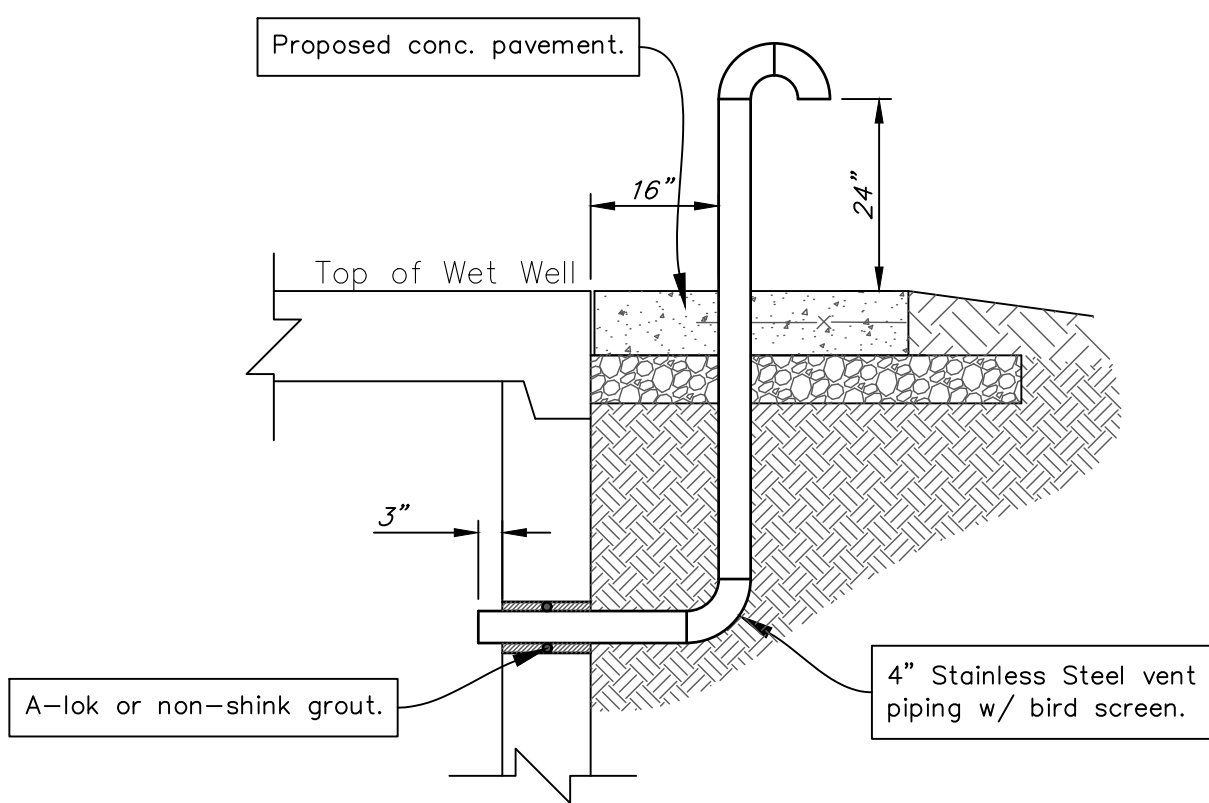


BENCHMARKS

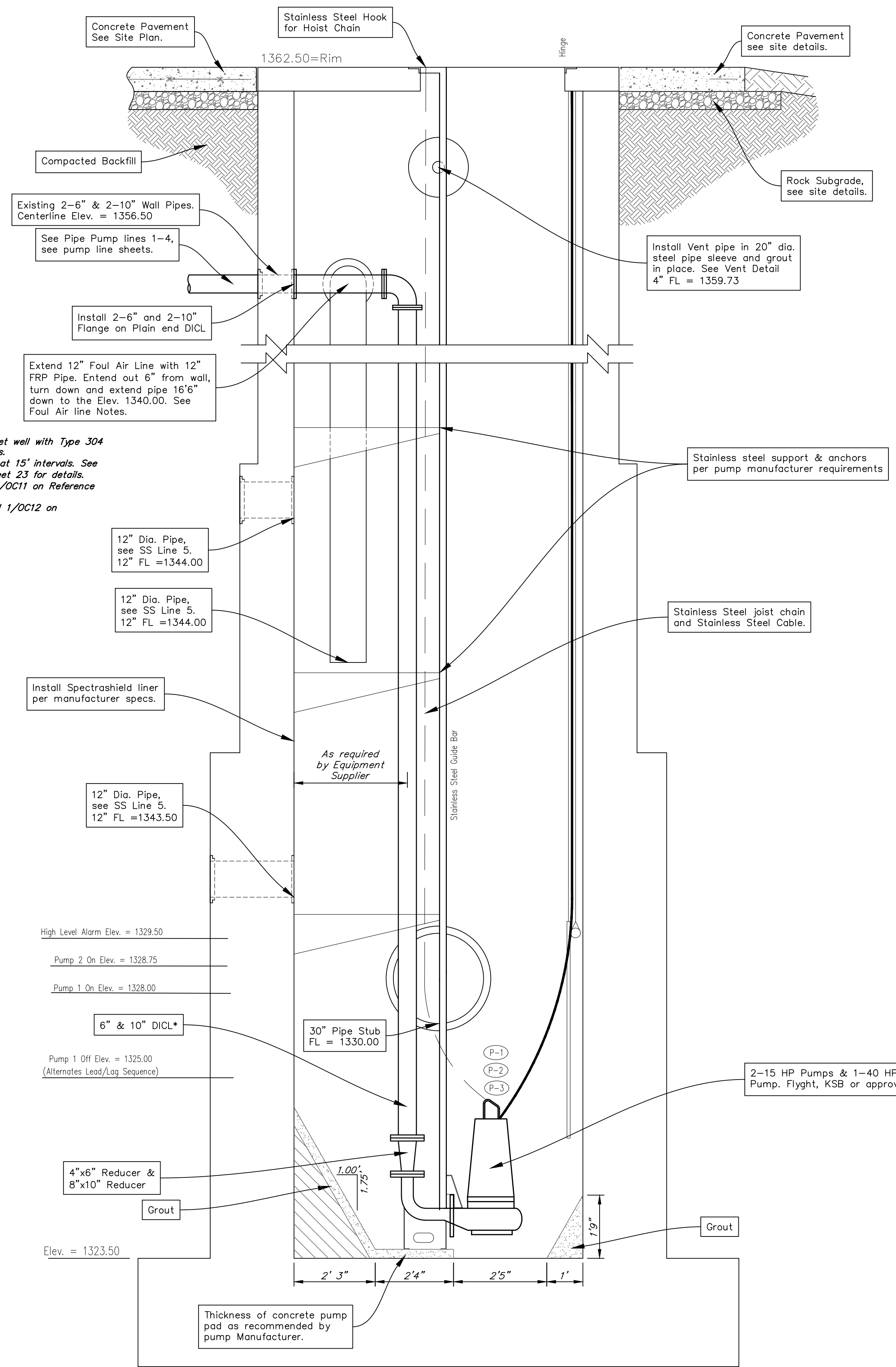
BM #1:
 Mag Nail on North edge of road,
 78' West of North Entrance Gate
 into Plant 3 Facility.
 Elev. = 1361.84 NGVD88

BM #2:
 RR Spike in East Transmission
 power pole, 100' West and 4' North
 of the NE corner of Sewer
 Treatment Plant #3 Add.
 Elev. = 1357.64 NGVD88

BM #3:
 RR Spike in West Transmission
 power pole, 52' North of 37th St.
 N. E. & SE corner of Sewer
 Treatment Plant #3 Add.
 Elev. = 1360.00 NGVD88

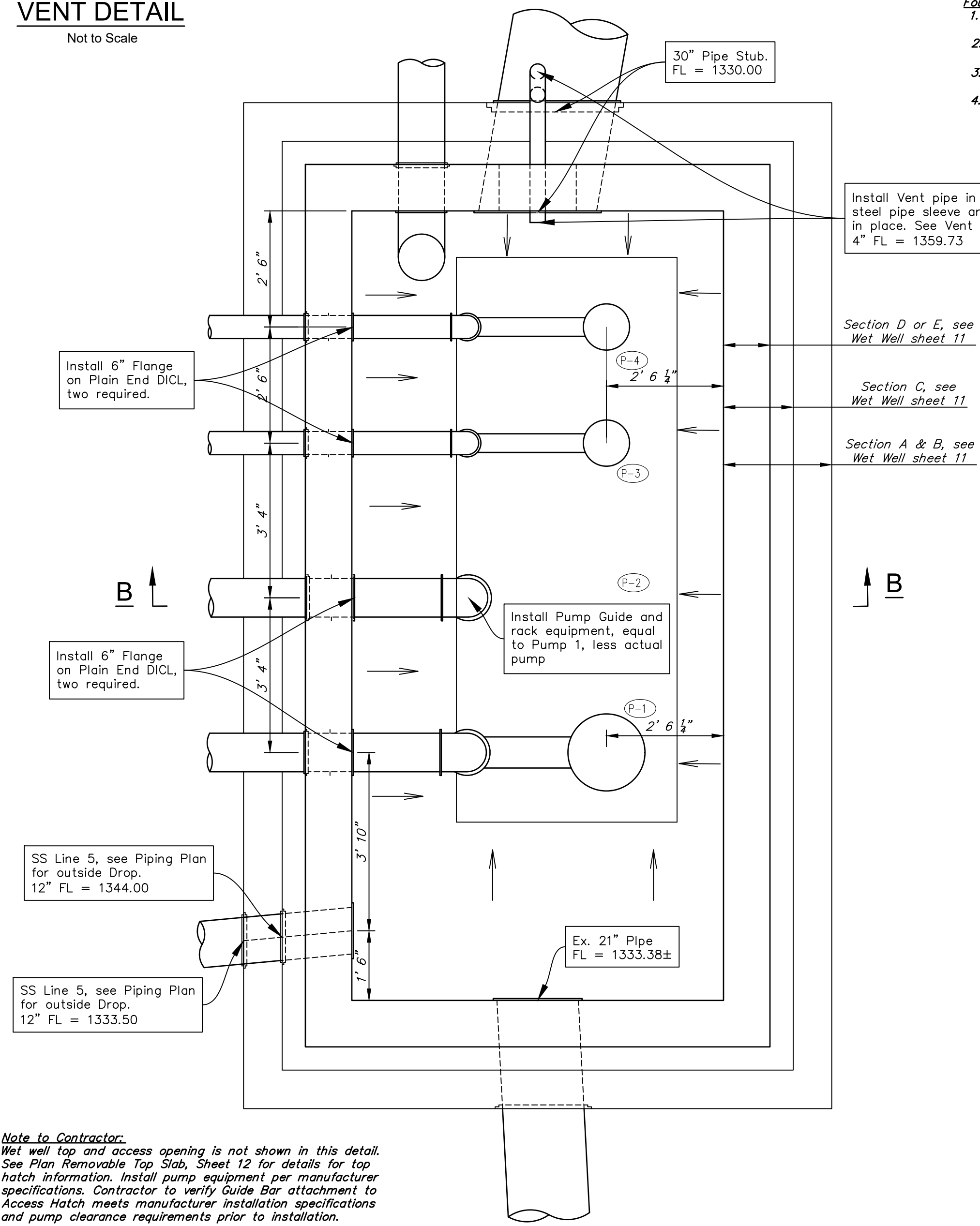


VENT DETAIL
 Not to Scale



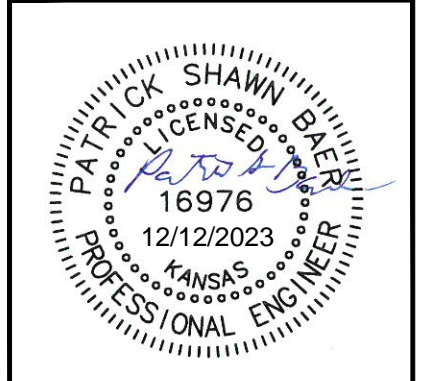
SECTION B - B
 This Sheet
 Scale: 1" = 2'

- Equl. Air line Requirements:**
1. Provide all ductwork in wet well with Type 304 L Stainless Steel Supports.
 2. Provide Type 3 Supports at 15' intervals. See D/OC11 on Reference Sheet 23 for details.
 3. Flexible connection see A/OC11 on Reference Sheet 23.
 4. Pipe transition, see Detail 1/OC12 on Reference Sheet 24.



PUMP DETAILS
 From Sheet 10
 Scale: 1" = 2'

Note to Contractor:
 Wet well top and access opening is not shown in this detail. See Plan Removable Top Slab, Sheet 12 for details for top hatch information. Install pump equipment per manufacturer specifications. Contractor to verify Guide Bar attachment to Access Hatch meets manufacturer installation specifications and pump clearance requirements prior to installation.



BAUGHMAN COMPANY

315 Ellis St.
 Wichita, KS 67211
 316-262-7271
 BaughmanCo.com

PLANT #3 (NW)
 NEW WET WELL

OPTION #2
8'X17' Rect.
Wet Well

SANITARY SEWER
 IMPROVEMENTS

PROJECT NUMBER:
 468-2023-005511

DESIGN: PSB DRAWN: LN
 DATE: Dec. 13, 2023

SHEET 13 OF 29

File: C:\Users\pat.BAUGHMAN\Desktop\Projects Copy\30 Inch Gravity Sanitary Sewer Replacement (22-06-E-186)\Engineering\Plant 3 SS Base.dwg