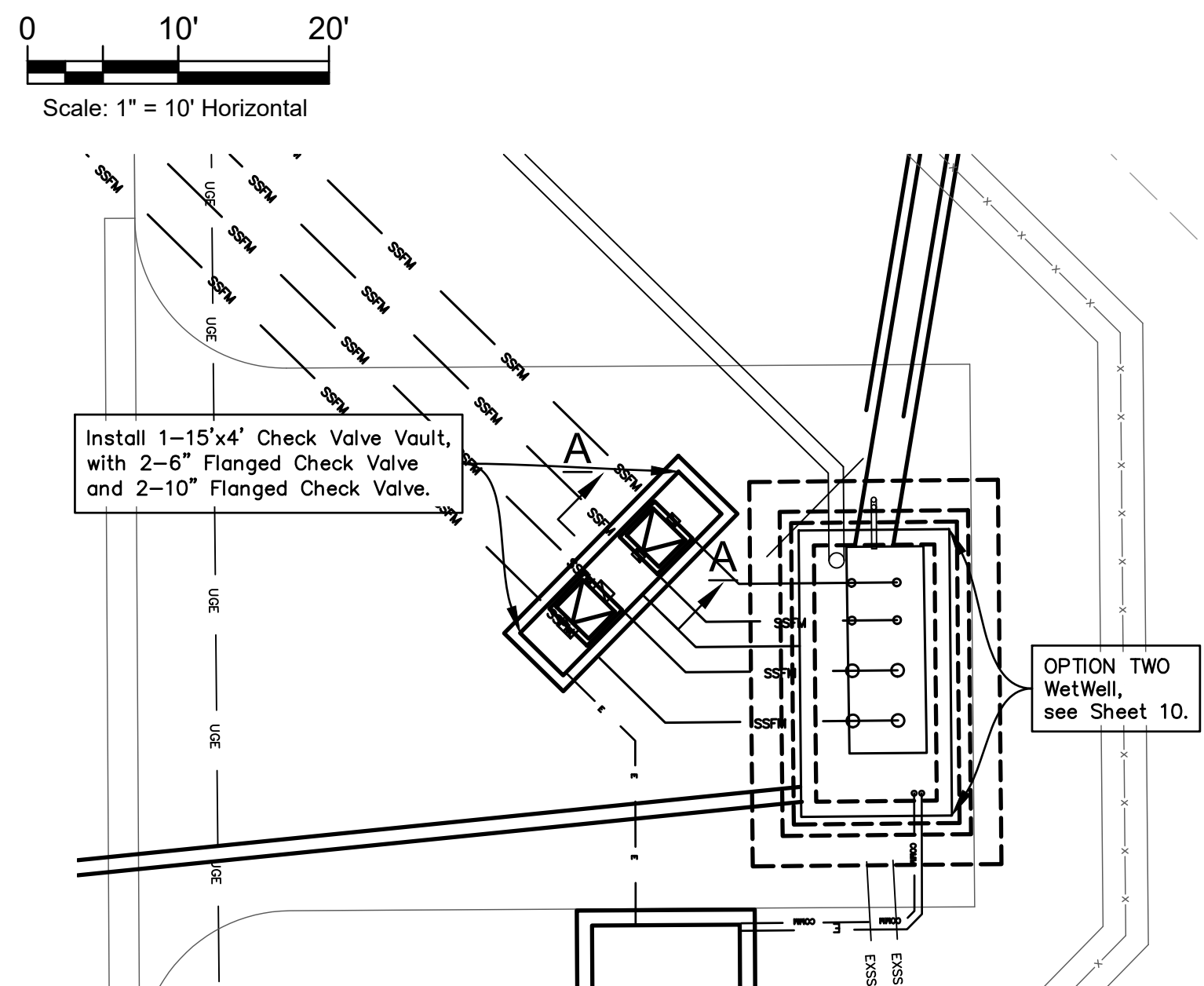
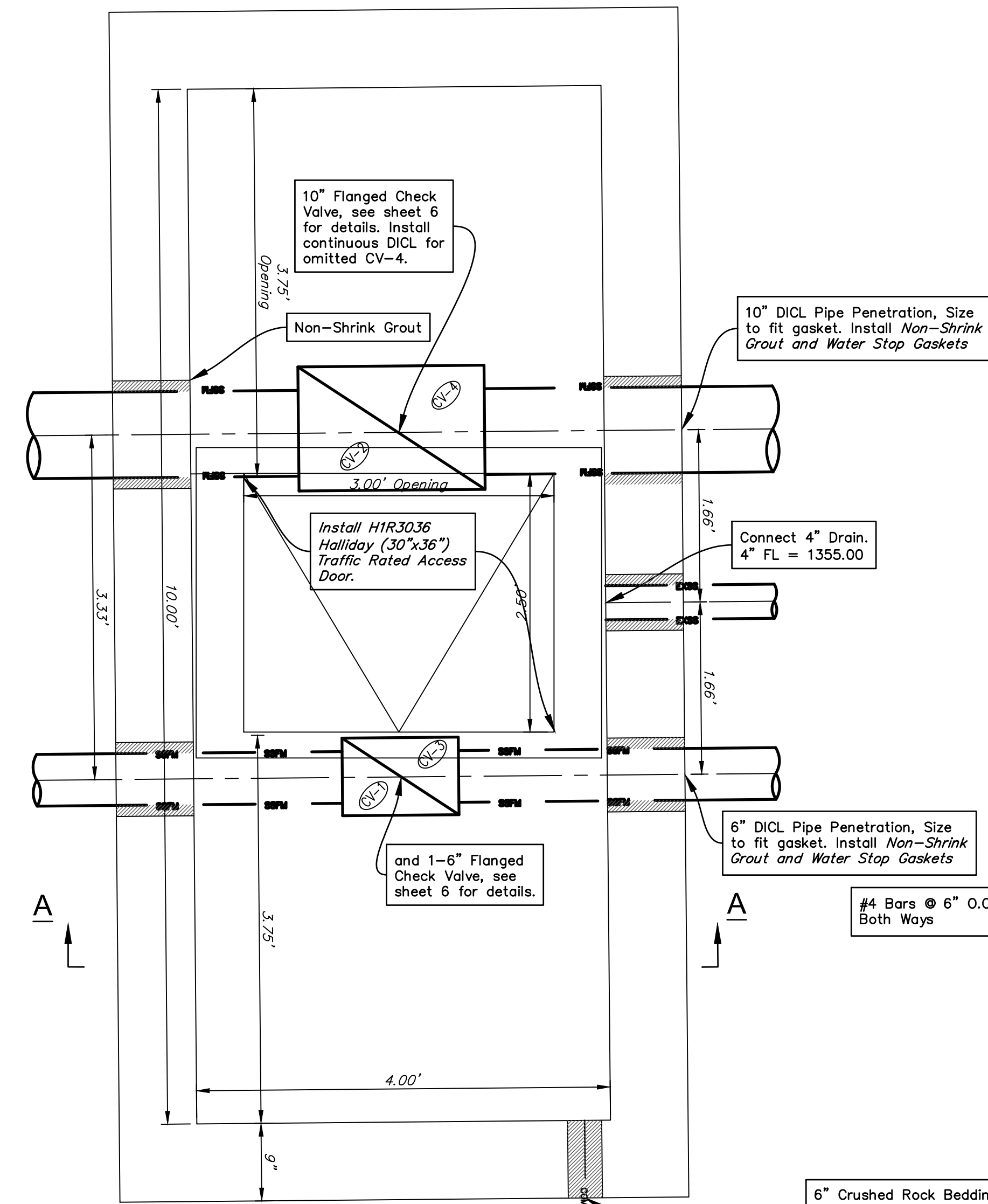


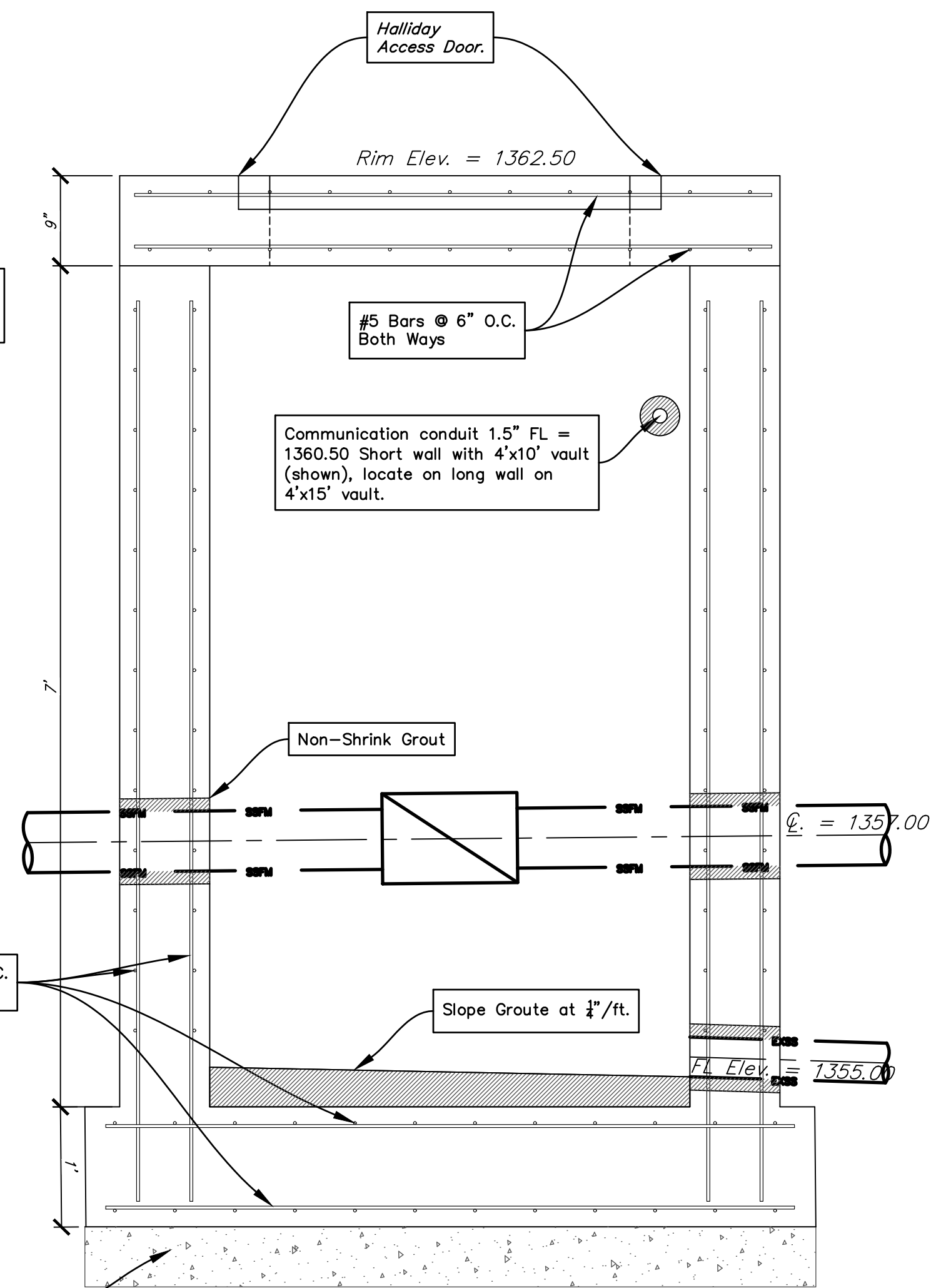
OPTION 1: DOUBLE VALVE VAULTS
Scale: 1" = 10'



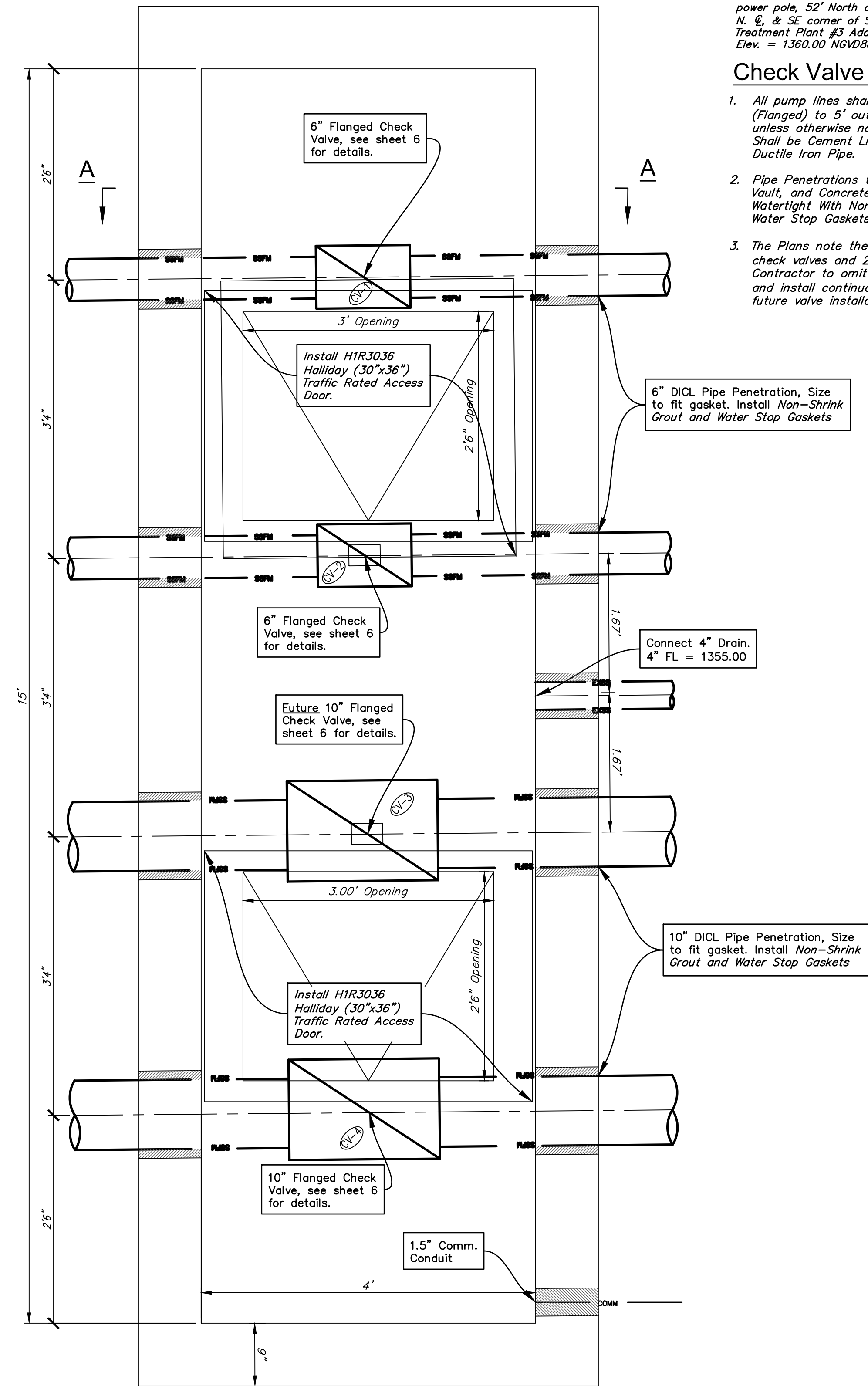
OPTION 2: ONE VALVE VAULT
Scale: 1" = 10'



OPTION 1 PLAN VIEW
Scale: 1" = 1'



A-A VIEW
Scale: 1" = 1'



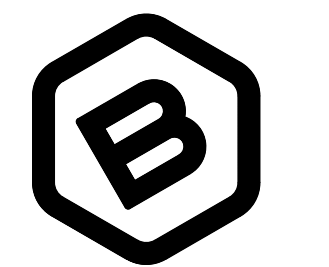
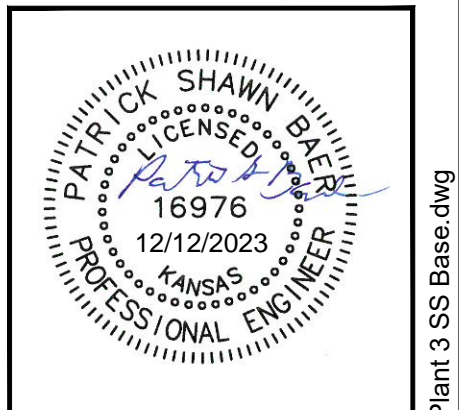
OPTION 2 PLAN VIEW
Scale: 1" = 1'

BENCHMARKS

- BM #1:
Mag Nail on North edge of road,
78' West of North Entrance Gate
into Plant 3 Facility.
Elev. = 1361.84 NGVD88
- BM #2:
RR Spike in East Transmission
power pole, 100' West and 4' North
of the NE corner of Sewer
Treatment Plant #3 Add.
Elev. = 1357.64 NGVD88
- BM #3:
RR Spike in West Transmission
power pole, 52' North of 37th St.
N. E. & SE corner of Sewer
Treatment Plant #3 Add.
Elev. = 1360.00 NGVD88

Check Valve Vault Notes

1. All pump lines shall be Ductile Iron (Flanged) to 5' outside the structures, unless otherwise noted. All interior piping shall be Cement Lined and Epoxy Coated Ductile Iron Pipe.
2. Pipe Penetrations thru the Check Valve Vault, and Concrete Pad shall be Grouted Watertight With Non-Shrink Grout and Water Stop Gaskets as required.
3. The Plans note the installation of two 6" check valves and 2-10' check valves. Contractor to omit the check valve CV-4 and install continuous 10" DICL line for future valve installation.



BAUGHMAN COMPANY

315 Ellis St.
Wichita, KS 67211
316-262-7271
BaughmanCo.com

PLANT #3 (NW)
NEW WET WELL

**Check Valve Vault
Plan & Details**

SANITARY SEWER
IMPROVEMENTS

PROJECT NUMBER:
468-2023-005511

DESIGN: PSB DRAWN: LN

DATE: Dec. 13, 2023

SHEET OF
17 29

File: C:\Users\pat.BAUGHMAN\Desktop\Projects Copy\30 Inch Gravity Sanitary Sewer Replacement (22-06-EI-186)\Engineering\Plant 3 SS Base.dwg