

**BENCHMARKS**

BM #1:  
Mag Nail on North edge of road,  
78' West of North Entrance Gate  
into Plant 3 Facility.  
Elev. = 1361.84 NGVD88

BM #2:  
RR Spike in East Transmission  
power pole, 100' West and 4' North  
of the NE corner of Sewer  
Treatment Plant #3 Add.  
Elev. = 1357.64 NGVD88

BM #3:  
RR Spike in West Transmission  
power pole, 52' North of 37th St.  
N. E. & SE corner of Sewer  
Treatment Plant #3 Add.  
Elev. = 1360.00 NGVD88

Sawcut ex. 12" HDPE Foul Air Line at 24"x12" Tee and cap. Contractor to abandon existing 12 HDPE line, plugging both ends and fill with flowable fill. Contractor to protect existing Foul Air Lines and avoid any debris. Cost to be subsidiary to Site Clearing and Restoration.

Ex. Electrical manhole to remain. See Elec. Plan for revisions.

Remove Ex. Electrical Wall Panel and above grade conduits. Return existing electrical equipment to Plant Staff for reuse. Abandon existing conduits protruding from the pavement, to avoid trip hazards. See electrical plans for proper conduit and wire abandonment requirements. Cost Subsidiary to Site Clearing and Restoration.

Prior to Demolition, remove pumps, pump racks, Foul Air piping and return to plant staff for reuse. Partially remove and abandon Existing Wet Well as noted. Remove the Lid and upper 12' of the 12" thick walls of the wet well. The remaining lower section of the Wet Well are to be abandoned in place and filled with jetted sand. Demolition and backfill are subsidiary to wet well Removal.

Remove 4" Drain and plug in Valve Vault.

Sawcut 6" DICL Pipe and reuse ex. coupling with new Pump Lines.

Sawcut 10" DICL Pipe and reuse ex. couplings with new Pump Lines.

Remove bollard & reinstall in new pavement. Cost subsidiary to Site Clearing and Restoration.

Remove Concrete Pavement. Preserve edge of existing Valve Vault.

Sawcut and remove concrete pavement Remove concrete pavement to the west. Sawcut to be subsidiary to Pavement Removal.

Remove Ex. Light Pole base and preserve Fixture and pole for reinstallation, 20' East. Maintain ex. lighting conduit and adjacent lighting use during construction.

Stub new 12" SS Main and extend to New Wet Well.

Sawcut and remove Asph. pavement to the West. Sawcut to be subsidiary to Pavement Removal.

Remove 152lf of existing 8' tall Wrought Iron Fence. Stock Fence undamaged fence panels for reuse. Sawcut and remove 152lf of 30" wide fiber rein. concrete apron. Sawcut & apron removal subsidiary to fence removal.

Remove existing 48.9lf of existing 21" SS Main. Existing end of 21" Main to be preserve for connection into proposed wet well.

Ex. pvc pipe marker to be removed.

Ex. 6" SS Manhole (MH-0) to partially removed. Contractor to remove existing upper sections, to the invert, the remaining invert and 2-12" vertical drains to the ex. 12" encased within the 30" pipe shall be filled with flowable fill during abandonment. Cost to be subsidiary to Manhole Removal.

Sawcut and remove Asph. pavement to the east. Sawcut to be subsidiary to Pavement Removal.

Sawcut and remove concrete pavement at existing Expansion Joint. Remove concrete pavement to the east. Sawcut to be subsidiary to Pavement Removal.

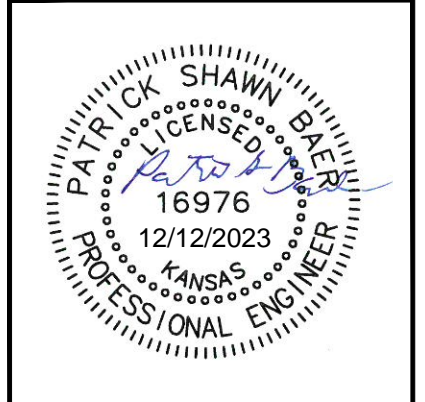
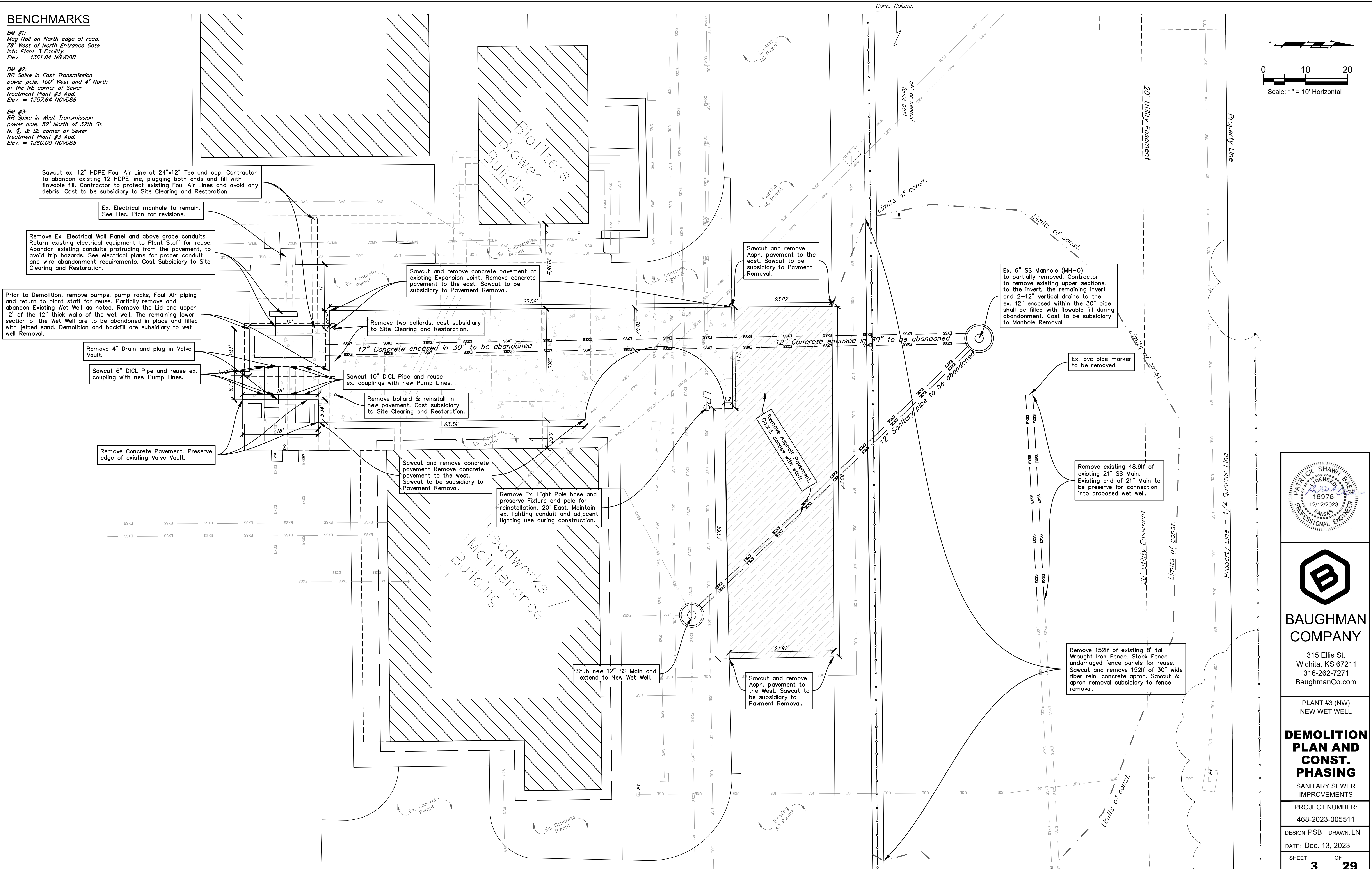
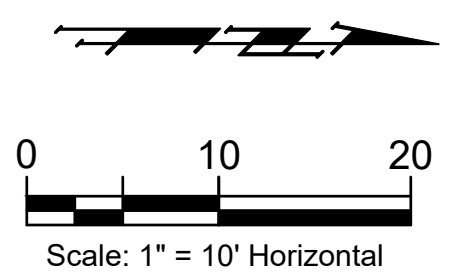
Remove two bollards, cost subsidiary to Site Clearing and Restoration.

12" Concrete encased in 30" to be abandoned

12" Concrete encased in 30" to be abandoned

12" Sanitary pipe to be abandoned

Remove Asphalt Pavement. Could access with staff.



**BAUGHMAN COMPANY**  
315 Ellis St.  
Wichita, KS 67211  
316-262-7271  
BaughmanCo.com

PLANT #3 (NW)  
NEW WET WELL

**DEMOLITION PLAN AND CONST. PHASING**

SANITARY SEWER IMPROVEMENTS

PROJECT NUMBER:  
468-2023-005511

DESIGN: PSB DRAWN: LN

DATE: Dec. 13, 2023

SHEET **3** OF **29**

File: C:\Users\pat.BAUGHMAN\Desktop\Projects Copy\30 Inch Gravity Sanitary Sewer Replacement (22-06-E186)\Engineering\Plant 3 SS Base.dwg