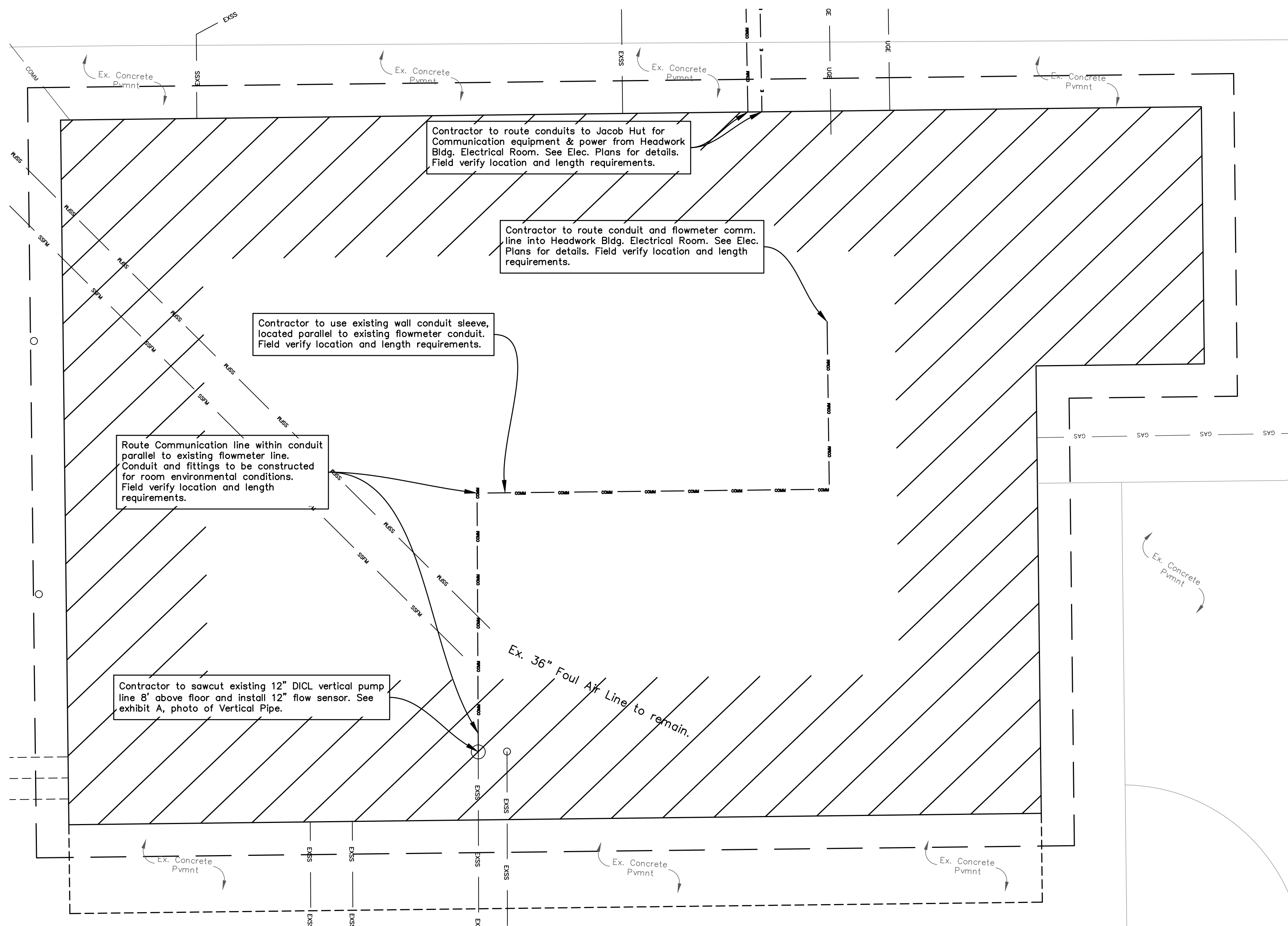


Existing 6" flowmeter

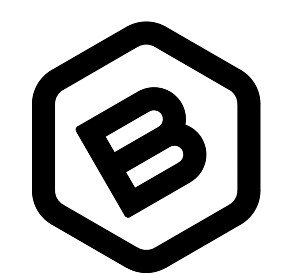
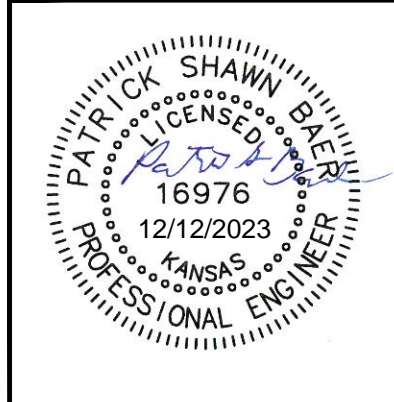
Existing 6" flowmeter communication line conduit. (Located behind 12" DI CL. Route proposed 12" flowmeter comm. line inside conduit, parallel with ex. conduit. Conduit & fittings within room to be constructed to meet room condition requirements.

Contractor to sawcut existing 12" DI CL vertical pump line 8' above floor and install 12" flow sensor. See exhibit A, photo of Vertical Pipe.

**EXHIBIT "A" FLOWMETER LOCATION**  
Scale: not to scale



**HEADWORKS BUILDING ADDITIONS**



**BAUGHMAN COMPANY**  
315 Ellis St.  
Wichita, KS 67211  
316-262-7271  
BaughmanCo.com

PLANT #3 (NW)  
NEW WET WELL

**HEADWORKS FLOW SENSOR DETAILS**  
SANITARY SEWER IMPROVEMENTS

PROJECT NUMBER:  
468-2023-005511

DESIGN: PSB DRAWN: LN

DATE: Dec. 13, 2023

SHEET **5** OF **29**

File: C:\Users\pat.BAUGHMAN\Desktop\Projects Copy\30 Inch Gravity Sanitary Sewer Replacement (22-06-EI-186)\Engineering\Plant 3 SS Base.dwg