

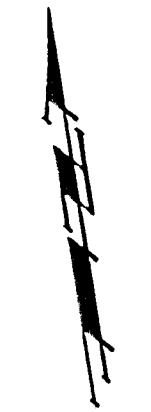
BENCHMARKS:

BM #1: COW Disc in top of curb adjacent to the fire hydrant at the SW corner of Yosemite and Lamp Cir. Elev. = 146.73 (City Datum)

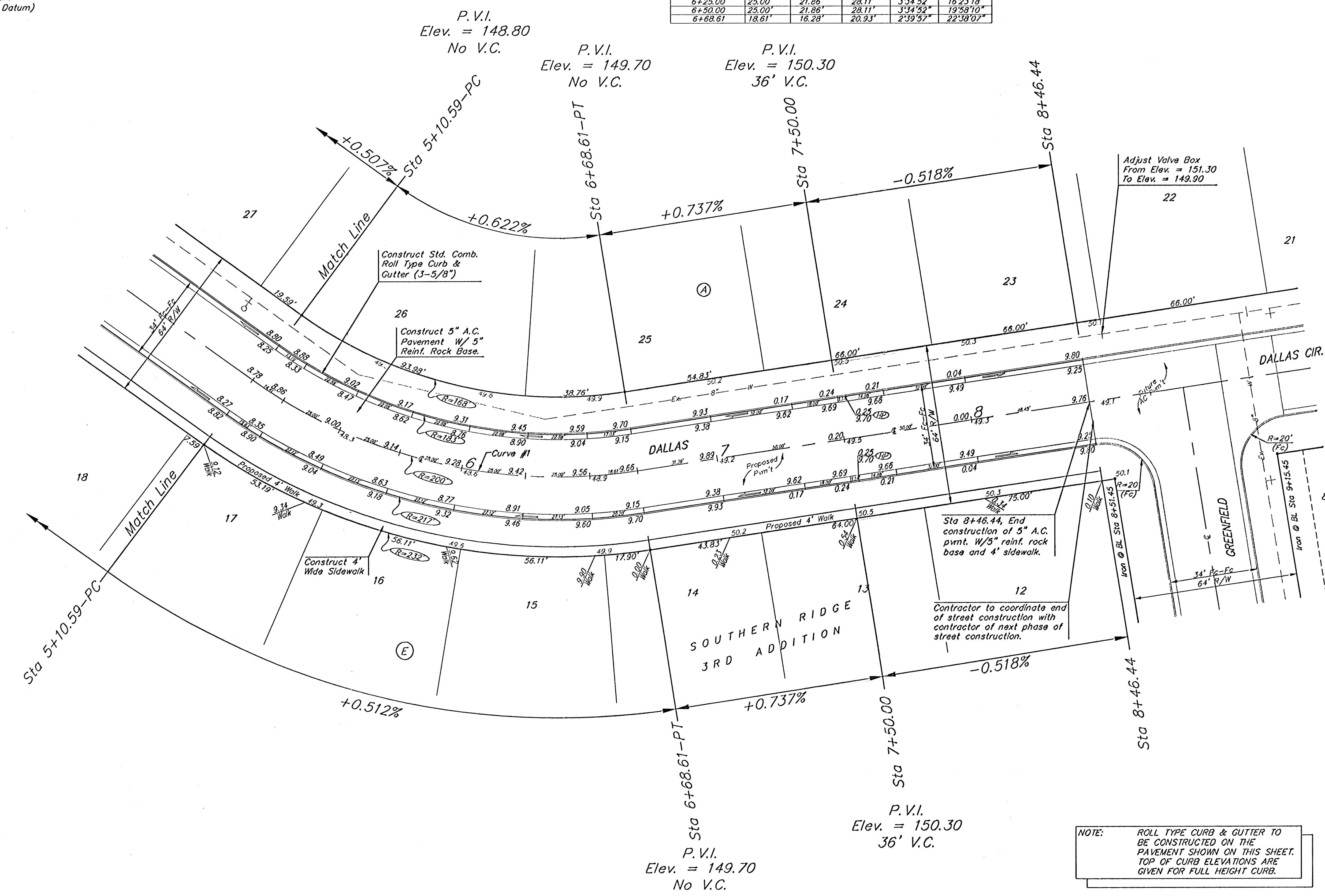
BM #2: COW Disc in top of curb adjacent to the fire hydrant on the west side of Westgate along the southerly line of Lot 13, Block B, Southern Ridge Addition. Elev. = 144.10 (City Datum)

Curve #1
Curve Data Based on Centerline
Rad. = 200' Delta = 45° 16' 14" Tangent = 83.40'
Arc = 158.02' L.C. = 153.95' Del/Ft. = 8.59459 Min.

Station	FACE CHORD LENGTHS			Del.	I. Del.
	Arc	8' Lt.	8' Rt.		
5+10.59	-	-	-	0°00'00"	0°00'00"
5+25.00	14.41'	12.61'	16.21'	2°03'51"	2°03'51"
5+50.00	25.00'	21.86'	28.11'	3°34'52"	3°38'43"
5+75.00	25.00'	21.86'	28.11'	3°34'52"	3°38'43"
6+00.00	25.00'	21.86'	28.11'	3°34'52"	3°38'43"
6+25.00	25.00'	21.86'	28.11'	3°34'52"	3°38'43"
6+50.00	25.00'	21.86'	28.11'	3°34'52"	3°38'43"
6+68.61	18.61'	16.28'	20.93'	2°39'57"	2°38'07"



Scale: 1" = 20' Horizontal
1" = 5' Vertical
• = Iron



P.V.I. Elev. = 148.80
No V.C.

P.V.I. Elev. = 149.70
No V.C.

P.V.I. Elev. = 150.30
36' V.C.

P.V.I. Elev. = 149.70
No V.C.

P.V.I. Elev. = 150.30
36' V.C.

NOTE: ROLL TYPE CURB & GUTTER TO BE CONSTRUCTED ON THE PAVEMENT SHOWN ON THIS SHEET. TOP OF CURB ELEVATIONS ARE GIVEN FOR FULL HEIGHT CURB.

	SOUTHERN RIDGE 3RD ADDITION - PH I	
	DALLAS STA 5+10.59 TO STA 8+46.44	
Baughman Company, P.A. 315 Little St. W. Minn. KS 67111 P31516237211 P3162620149 ENGINEERING SURVEYING PLANNING LANDSCAPE ARCHITECTURE		
PROJECT NUMBER 472-84188	DESIGN TJW	DRAWN TJW/TMS
REVISIONS:	APPROVED AEG	DATE 09/05
SCALE Noted		SHEET 7 OF 17
Southern Ridge 3rd/STR/Su1.dwg		0501-E151