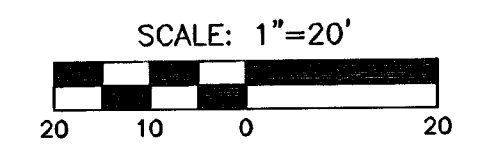


SUBDIVISION BENCH MARKS				
NO.	STREET AND STATION	FROM CL	DESCRIPTION	ELEVATIONS
1	END OF CUL-DE-SAC, GLENMOOR CT. (NO.)	35'	TOP OF CURB AT END OF CUL-DE-SAC, GLENMOOR CT. (NO.)	

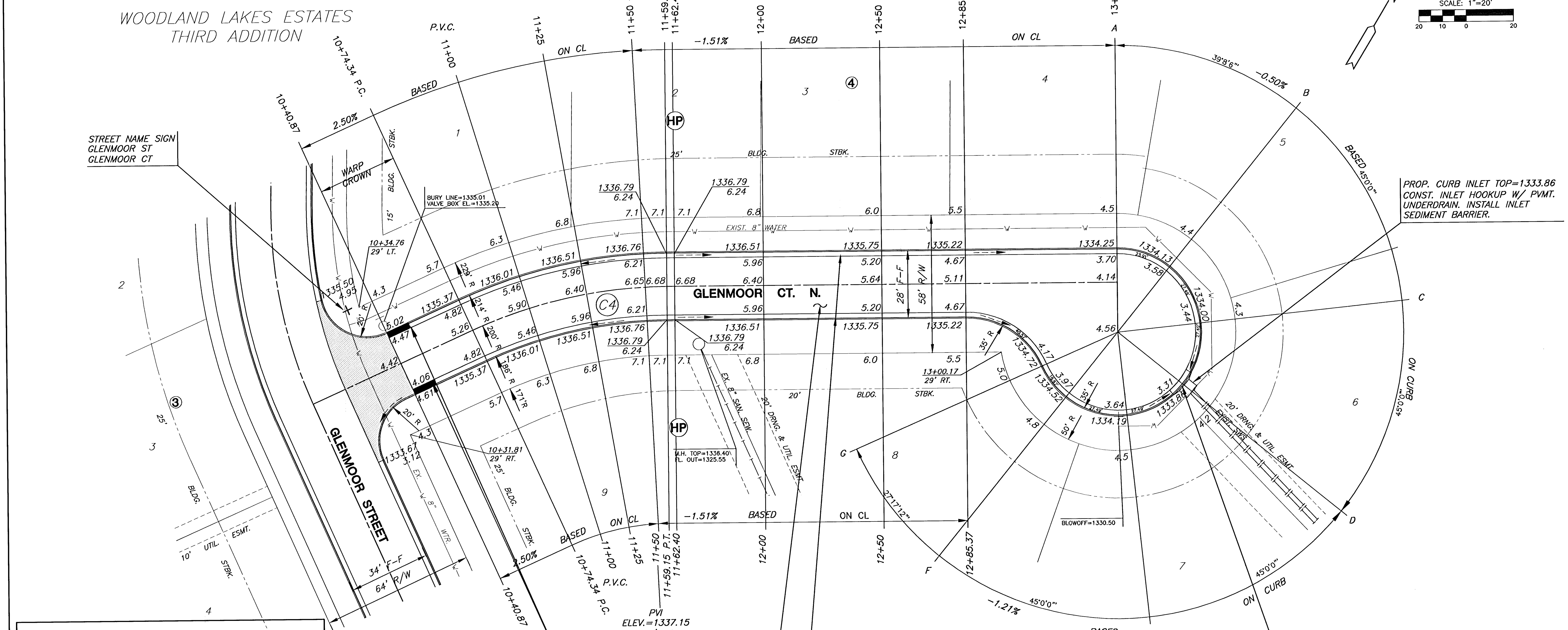
NOTE: CONTRACTOR SHALL INSTALL SUBDIVISION BENCH MARKS ("FLAT SURVEY MARKERS NO. 8134-08 3" TOP DIAMETER" PROVIDED BY KANSAS BLUE PRINT CO., INC.) COSTS TO BE CONSIDERED SUBSIDIARY TO CONSTRUCTION OF COMBINED CURB AND GUTTER.

WOODLAND LAKES ESTATES  
THIRD ADDITION



STREET NAME SIGN  
GLENMOOR ST  
GLENMOOR CT

PROP. CURB INLET TOP=1333.86  
CONST. INLET HOOKUP W/ PVMT.  
UNDERDRAIN. INSTALL INLET  
SEDIMENT BARRIER.



CONSTRUCT COMBINED  
CURB & GUTTER  
(ROLL CURB, 3 5/8")

END OF CUL-DE-SAC, GLENMOOR CT. (N)  
INSTALL SUBDIVISION BENCHMARK S.E. SIDE  
OF INLET HOOKUP (NO. 8134-08, KANSAS  
BLUE PRINT CO.)

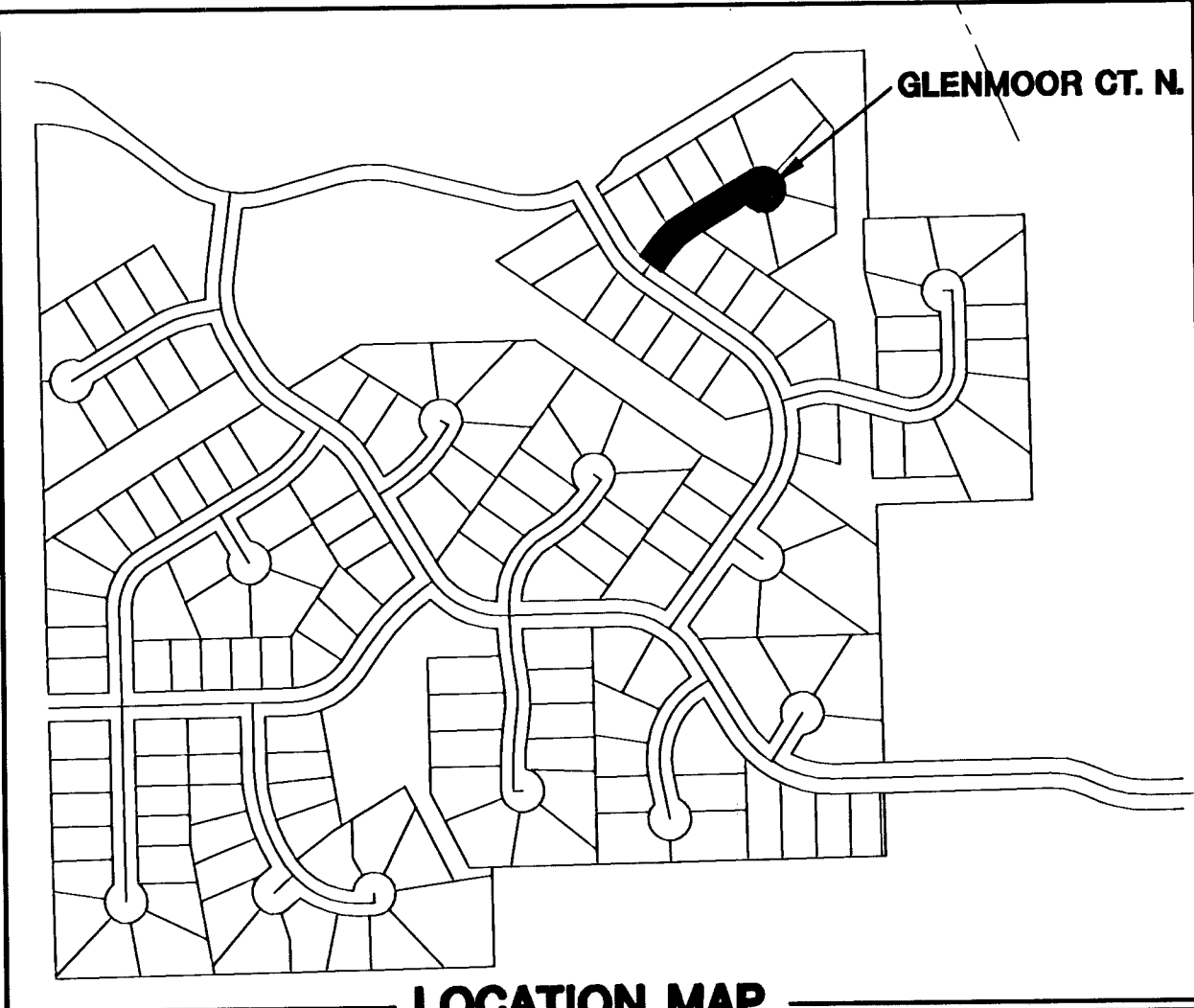
CONST. 10" TRANSITION  
FROM FULL CURB TO ROLL  
CURB

CONST. 5" A.C. PAVEMENT  
W/ 3" BIT. BASE OVER 6"  
CRUSHED ROCK BASE ON  
GEOGRID REINFORCEMENT.

WOODLAND LAKES ESTATES  
THIRD ADDITION

- LEGEND**
- + STREET SIGN & SIGN LOCATION  
(SEE SIGN ASSEMBLY TABLE  
FOR TYPE & STATION OF SIGN)
  - [Symbol] = VALLEY GUTTER

- NOTE:**
- TOP OF CURB ELEVATIONS SHOWN ARE FOR FULL CURB. CONSTRUCT CURB AS NOTED.
  - CONTRACTOR SHALL REMOVE ALL TREES WITHIN ROAD RIGHT-OF-WAY.
  - CURVE DATA FOR CURVES LABELED (C#) MAY BE FOUND ON SHEET 15.



**WOODLAND LAKES THIRD ADDITION**  
PROJECT NAME

**GLENMOOR COURT NO. - GLENMOOR PHASE**  
SHEET TITLE

**MKEC**  
ENGINEERING  
CONSULTANTS  
411 N. WEBB ROAD  
WICHITA, KS. 67206  
316 - 684 - 9600

SRS DESIGN BY.	DM DRAWN BY.	SRS CHECKED BY.
MAY 2005 DATE	02172E5 JOB NO.	12 / 29 SHEET/OF

H:\CIVIL\95058\02172\dwg\Pav\GLENMOOR\02172E5.dwg