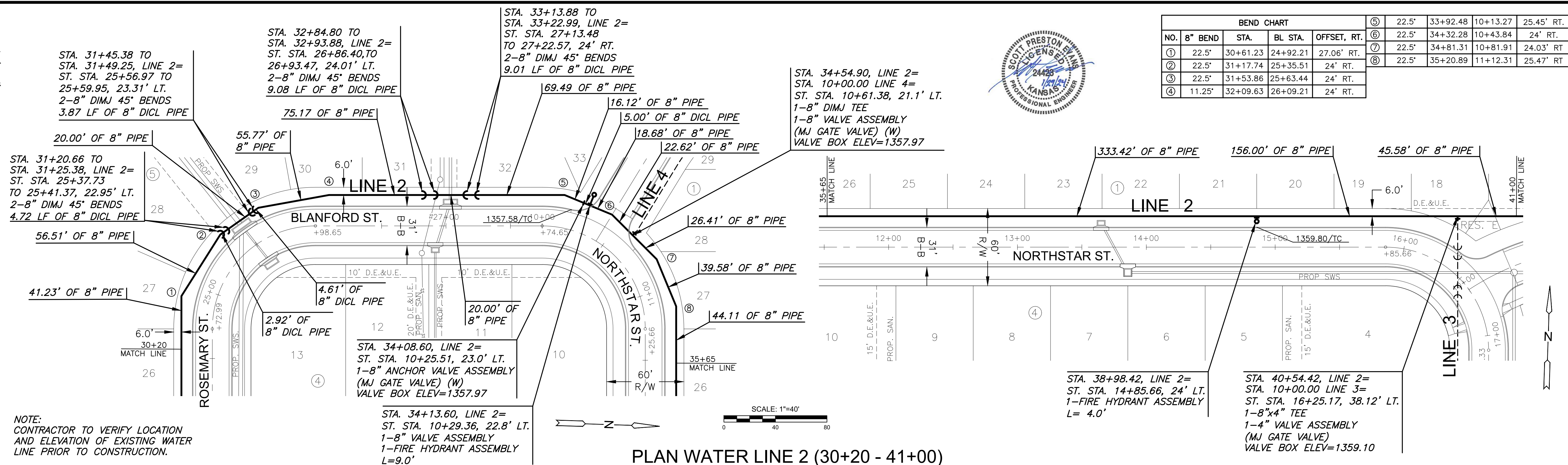
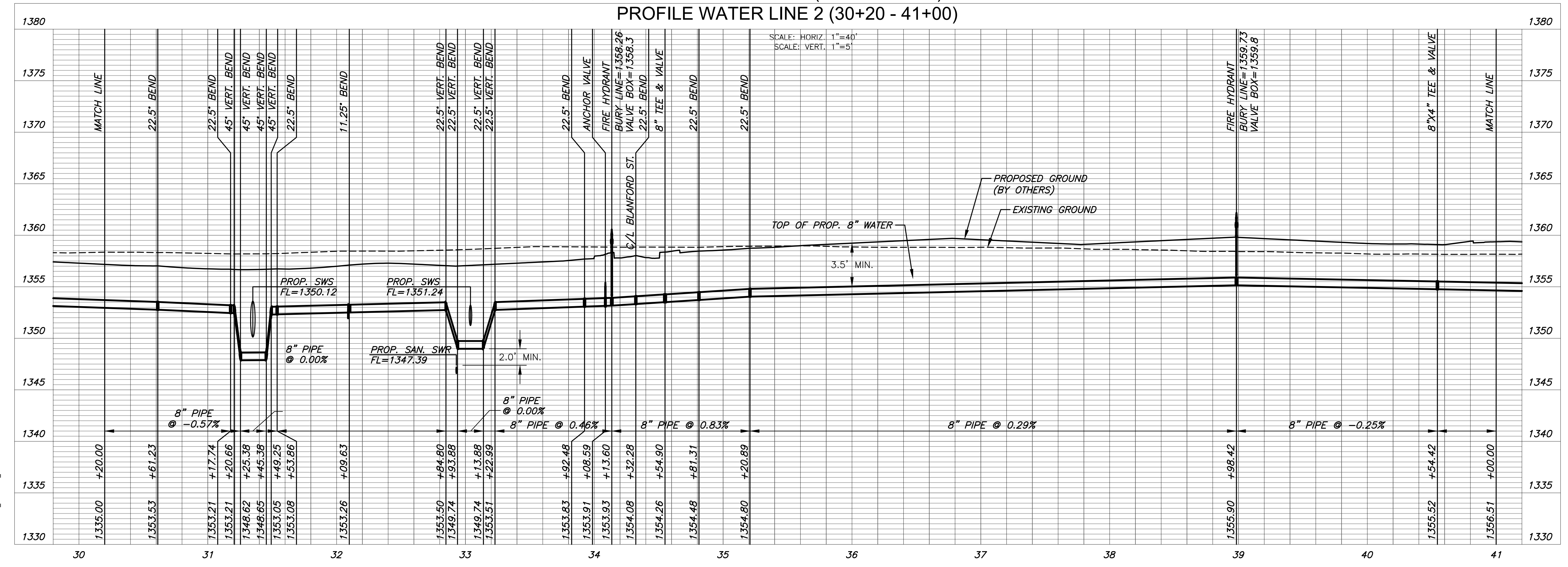


PLOTTED: Monday, January 29, 2024 @ 09:35AM
 J:\PROJECTS\2024\20240101\2024_BRIDGE_THE HEIGHTS AT MAIZE\00 230220 CAD\SHOTS\05 CIVIL\WFD\230220-05-2303.DWG



BEND CHART				
NO.	8" BEND	STA.	BL STA.	OFFSET, RT.
①	22.5°	30+61.23	24+92.21	27.06' RT.
②	22.5°	31+17.74	25+35.51	24' RT.
③	22.5°	31+53.86	25+63.44	24' RT.
④	11.25°	32+09.63	26+09.21	24' RT.
⑤	22.5°	33+92.48	10+13.27	25.45' RT.
⑥	22.5°	34+32.28	10+43.84	24' RT.
⑦	22.5°	34+81.31	10+81.91	24.03' RT.
⑧	22.5°	35+20.89	11+12.31	25.47' RT.

NOTE:
CONTRACTOR TO VERIFY LOCATION
AND ELEVATION OF EXISTING WATER
LINE PRIOR TO CONSTRUCTION.



WATER DISTRIBUTION PLANS FOR
THE HEIGHTS AT MAIZE ADDITION
 MAIZE, KANSAS

©2024
MKEC Engineering
All Rights Reserved
www.mkec.com
These drawings and their contents, including, but not limited to, all concepts, designs, & ideas are the exclusive property of MKEC Engineering (MKEC), and may not be used or reproduced in any way without the express consent of MKEC.

WATER LINE 2	
PROJECT NO.	448-2024-037549
DATE	JAN. 2024
SCALE	1" = 40'
DESIGNED	DRAWN
DFL	BWS
CHECKED	SPE
NO.	REVISION
DATE	
SHEET NO.	
07 OF 19	