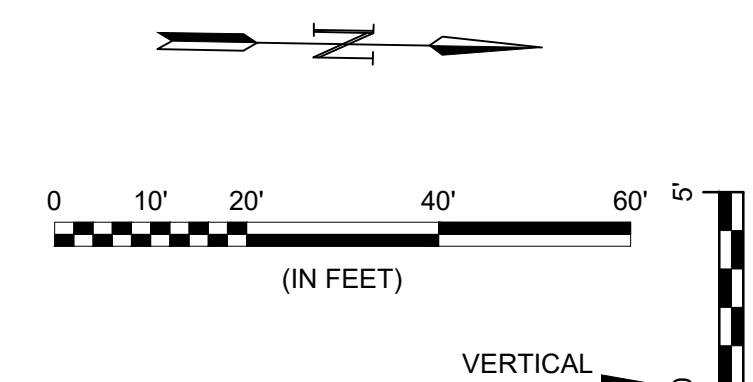
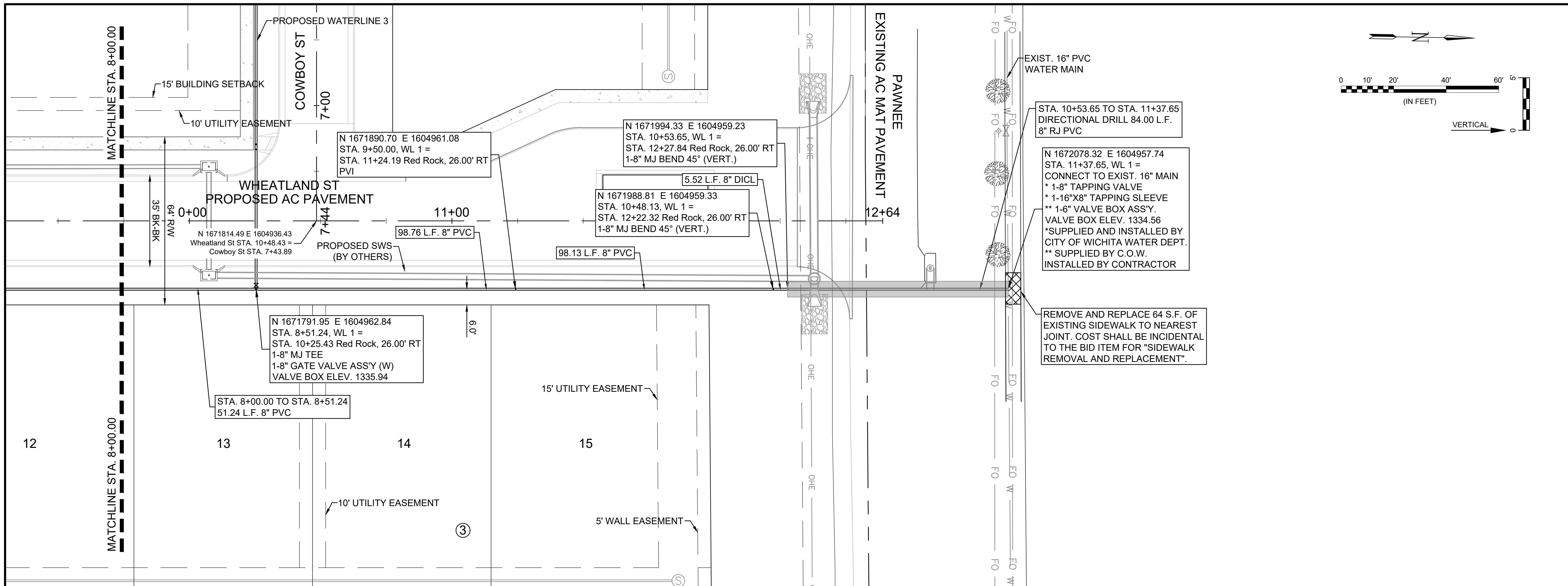


File: L:\2022\22141006 - Lionsgate Addition\Drawings\C3DWSD\WATERLINE 1 (3 OF 3).dwg Last Save: 1/30/2024 8:17 AM Last saved by: McCarreraPiedra
 Last plotted by: Carrera-Piedra, Mariale Plot Date: 1/30/2024 8:32 AM Plotter used: None



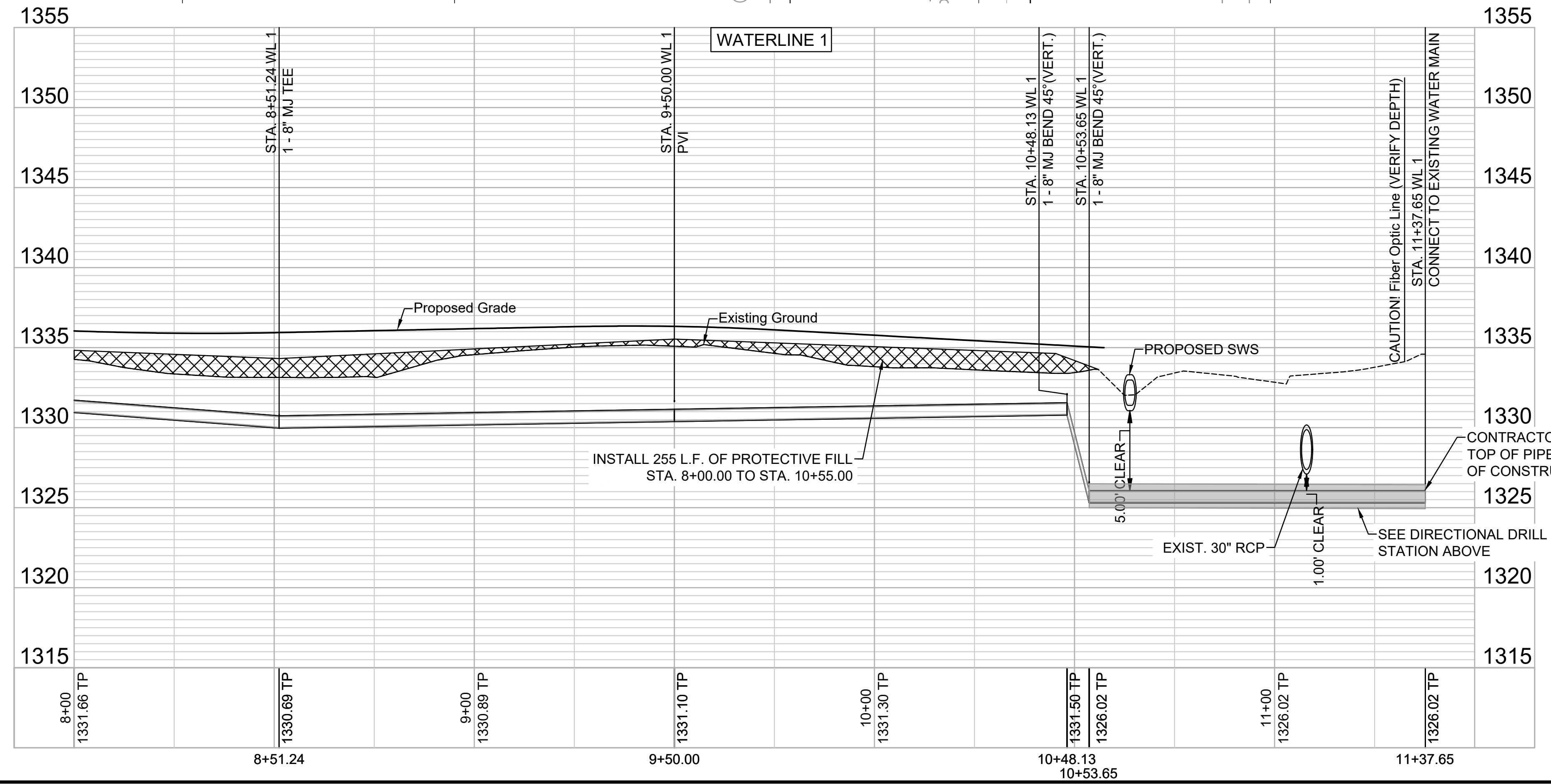
GARVER
 © 2023 GARVER, LLC
 THIS DOCUMENT, ALONG WITH THE
 IDEAS AND DESIGNS CONVEYED
 HEREIN, SHALL BE CONSIDERED
 INSTRUMENTS OF PROFESSIONAL
 SERVICE AND ARE PROPERTY OF
 GARVER, LLC. ANY USE,
 REPRODUCTION, OR DISTRIBUTION
 OF THIS DOCUMENT, ALONG WITH
 THE IDEAS AND DESIGN CONTAINED
 HEREIN, IS PROHIBITED UNLESS
 AUTHORIZED IN WRITING BY
 GARVER, LLC OR EXPLICITLY
 ALLOWED IN THE GOVERNING
 PROFESSIONAL SERVICES
 AGREEMENT FOR THIS WORK.

1995 Midfield Road
 Wichita, KS 67209
 (316) 264-8008



REV.	DATE	DESCRIPTION	BY

CITY OF WICHITA
 WICHITA, KANSAS
LIONSGATE WATERLINE



NOTE:
 ANY BENDS OR DUCTILE IRON PIPE REQUIRED TO
 MATCH THE ELEVATION OF THE EXISTING 16"
 WATER MAIN SHALL BE SUBSIDIARY TO THE BID
 ITEM FOR "CONNECT TO EXISTING WATER MAIN".

WATERLINE 1
 (3 OF 3)

JOB NO.: 22T41006
 DATE: JAN 2024
 DESIGNED BY: .
 DRAWN BY: .

BAR IS ONE INCH ON
 ORIGINAL DRAWING
 IF NOT ONE INCH ON THIS SHEET,
 ADJUST SCALES ACCORDINGLY.

DRAWING NUMBER
 .

SHEET
 NUMBER **7** OF **19**