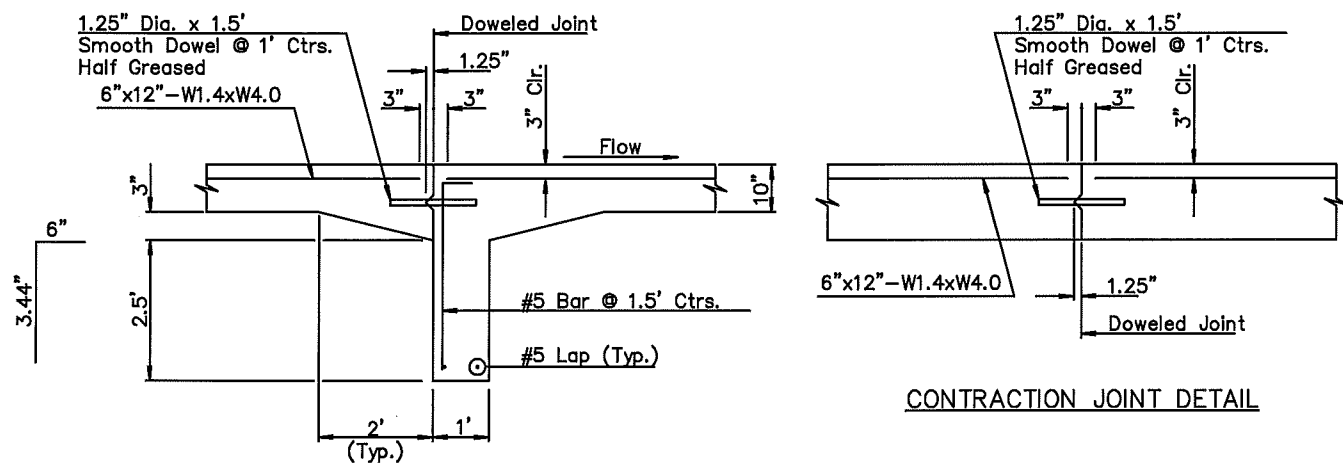


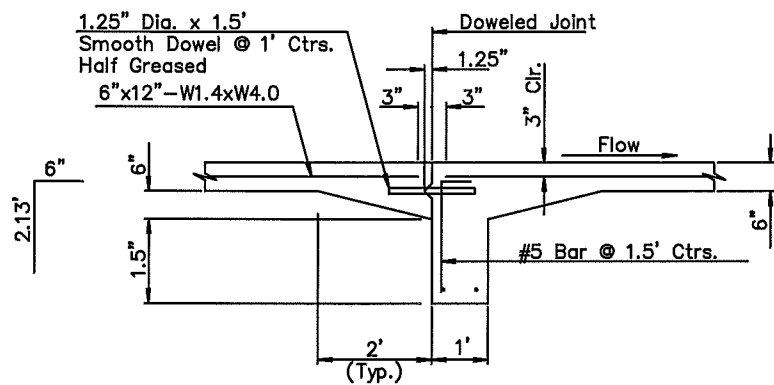
Note: 1. All embankment within the Canal earthwork area shall be Type B, MR-90 compaction.

TYPICAL HALF-SECTION OF CANAL LINING



CONTRACTION JOINT DETAIL

TRANSVERSE CONSTRUCTION JOINT DETAIL BOTTOM SLAB



TRANSVERSE CONSTRUCTION JOINT DETAIL SIDE SLOPES

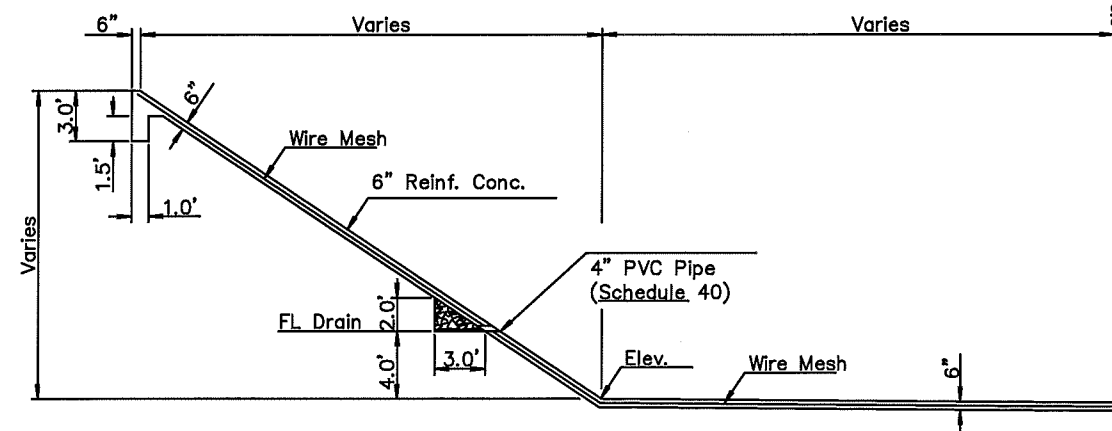
Note:

Reinforced Concrete shall be City of Wichita Paving Mix. Wire Reinforcing Mesh shall be of the Electrically Welded Mesh Type and shall be Composed of W1.4 Steel Wire spaced at 6" Centers and W4.0 Steel Wire spaced at 12" Centers. Approximate Weight - 2.14 lb Per Sq. Yd.

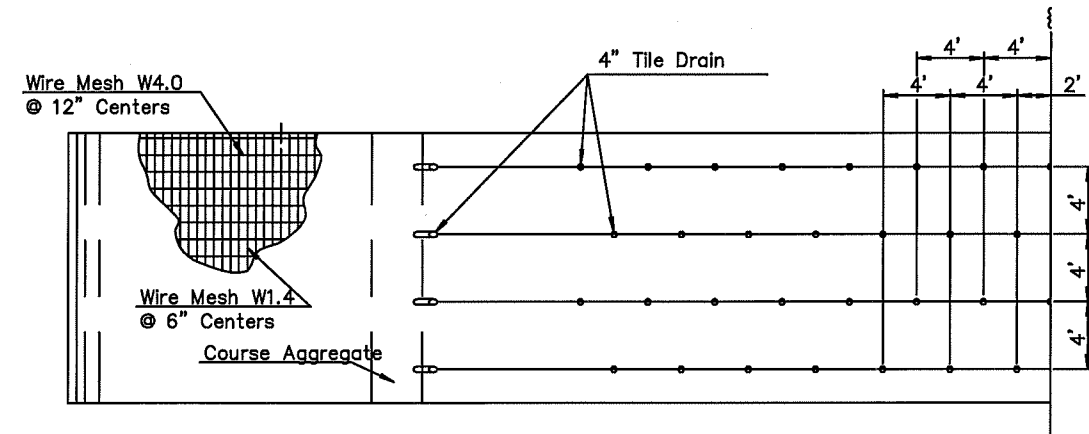
Measurement of "Reinforced Concrete" shall be in Sq. Yd. and shall be the Outside Surface Area, including the Toewalls, regardless of the Thickness shown on the Plans.

When a Pier Column, Headwall, or any other obstruction falls within the Concrete Surface, 1.5" Joint Material Type B will be used around the obstruction. Type B Joint Material will be included in the Unit Price for "Reinforced Concrete."

The Coarse Aggregate placed to the limits shown in the Details shall be considered Subsidiary to the applicable "Reinforced Concrete" bid item. Coarse Aggregate shall be UD-1.



HALF-SECTION OF CANAL LINING



HALF-PLAN OF CANAL LINING

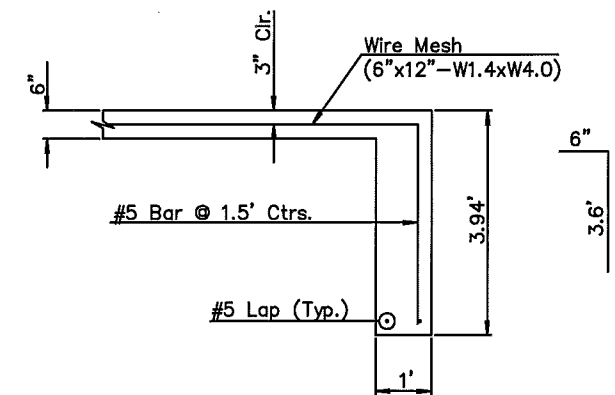
Note:

Reinforced Concrete shall be City of Wichita Paving Mix. Wire Reinforcing Mesh shall be of the Electrically Welded Mesh Type and shall be Composed of W1.4 Steel Wire spaced at 6" Centers and W4.0 Steel Wire spaced at 12" Centers. Approximate Weight - 2.14 lb Per Sq. Yd.

Measurement of "Reinforced Concrete" shall be in Sq. Yd. and shall be the Outside Surface Area, including the Toewalls, regardless of the Thickness shown on the Plans.

When a Pier Column, Headwall, or any other obstruction falls within the Concrete Surface, 1.5" Joint Material Type B will be used around the obstruction. Type B Joint Material will be included in the Unit Price for "Reinforced Concrete."

The Coarse Aggregate placed to the limits shown in the Details shall be considered Subsidiary to the applicable "Reinforced Concrete" bid item. Coarse Aggregate shall be UD-1.



TOE WALL

	CANAL DETAIL		
	<small>CITY ENGINEER</small> JAMES L. ARMOUR, P.E., L.S.		
	<small>PROJECT NUMBER</small> 488-84119	<small>DCR NUMBER</small> 884409	<small>DATE</small> 06/07
	<small>CITY ENGINEER'S OFFICE</small> <small>CITY HALL - SEVENTH FLOOR</small> <small>405 NORTH MAIN STREET</small> <small>WICHITA, KANSAS 67202-1820</small> <small>(316) 268-4001</small> <small>(316) 268-3114 FAX</small>	<small>DESIGN</small> <small>DEA</small>	<small>DRAWN</small> <small>DEA</small>
		<small>SHEET</small> 1 OF 1	