

**CONSTRUCTION PLANS FOR
STORM WATER SEWER NO. 621
BACKYARD DRAINAGE BETWEEN
PRESCOTT AND RUTLEDGE CIR.
TO
THE CITY OF WICHITA, KANSAS**

JAMES L. ARMOUR, P.E. - CITY ENGINEER

PROJECT NO. 468-84152

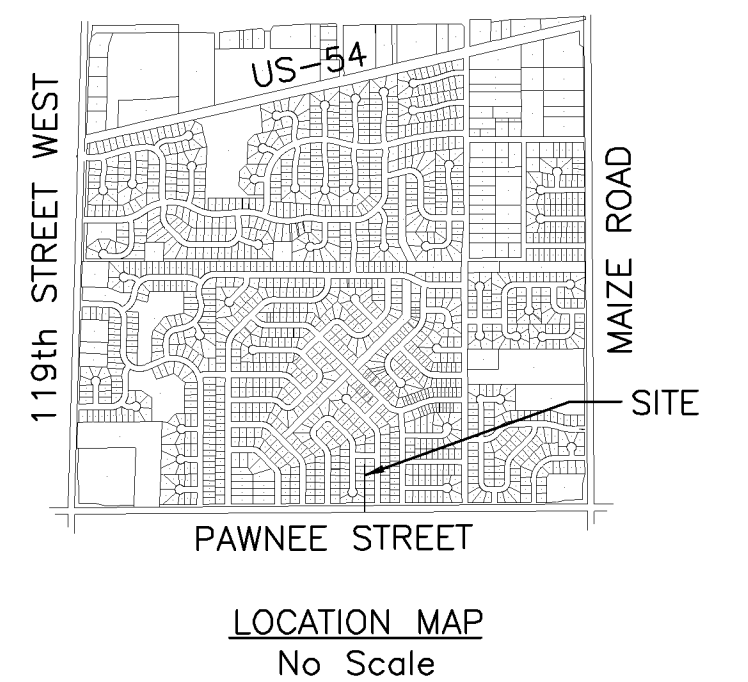
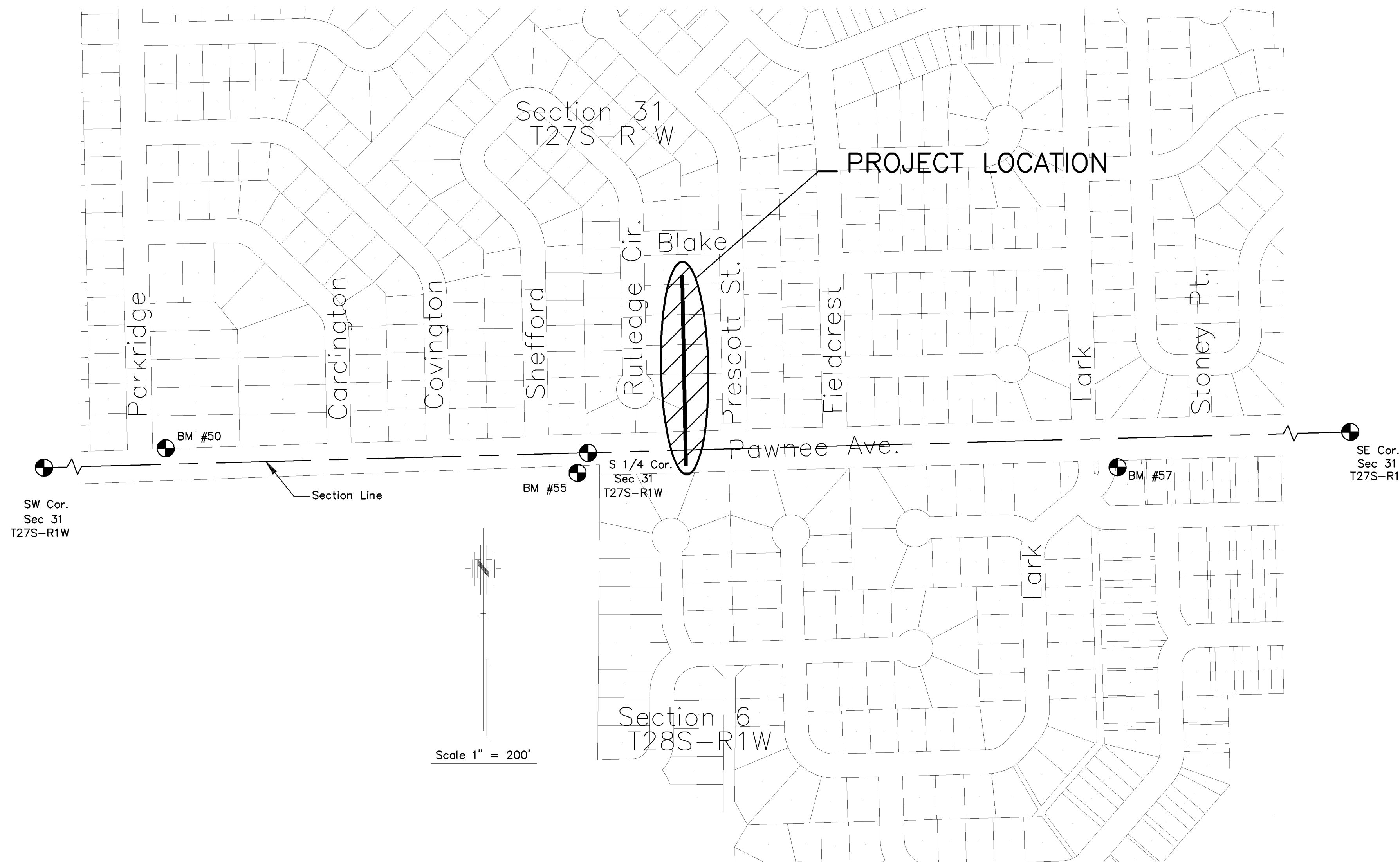
OCA NO. 751419

GENERAL NOTES:

- Utility service lines, poles, valve boxes, meters and etc. are to be adjusted as necessary by others prior to construction unless the plans specifically call for their adjustment by the Contractor. Existing utilities and their location, as shown on the plans, represent the best information obtainable for design. The Contractor will be required to work around existing utilities within the right-of-way which do not conflict with proposed construction.
- Rubble from the removal of miscellaneous structures and excess excavation which is to be wasted shall be disposed of on sites to be provided by the Contractor. These sites shall be approved by the Engineer as to suitability, appearance and site location. Locations that, in the opinion of the Engineer, will leave an unsightly appearance will not be approved.

All suitable excavation shall be wasted on low lying lots within the addition before any material is disposed of off site.

All disposal sites must be approved by the Kansas Department of Health and Environment. Material either stockpiled or disposed of in a flood plain would require a Kansas State Board of Agriculture permit. Any material dumped in waters of the United States or wetlands is subject to U.S. Corps. of Engineers permitting regulations. Any material buried or stockpiled beyond approved construction limits would require additional archaeological investigations unless buried in a previously approved borrow location.
- Trees and shrubs in public right-of-way which are in direct conflict with proposed new construction shall be removed by the Contractor with the Engineer's approval. Trees and shrubs which are not in direct conflict with proposed new construction shall be saved and protected from damage. The cost is subsidiary to street construction costs.
- The Contractor shall be responsible for preserving property irons. The Contractor will be required to reestablish any property irons which are damaged or destroyed by his construction operations. Such irons shall be reestablished by a licensed land surveyor in accordance with state laws.
- All lawn/turf areas disturbed by construction shall be restored with the same sod as existing. Restoration of disturbed areas shall include, but not be limited to, top soil preparation and sodding. All sodding work shall be in accordance with City Standard Specifications and the City Administrative Regulation No. AR78, which governs cleanup and restoration or replacement following construction. The "Recapitulation of Quantities" will show the estimated Square Yards of disturbed lawn/turf area to be sodded, with a bid item for the same. When the weather/season prevents the installation of sod, the Contractor shall be responsible for installing Erosion Control Blanket (Curlex I, or approved equal) at the back of curb (8' wide minimum). All costs for erosion mat installation shall be subsidiary to "Site Restoration".
- Contractor shall maintain all existing BMPs on project site during construction. Contractor shall repair or replace any existing BMPs that are damaged (Cost is subsidiary to site restoration). If BMPs were damaged prior to contractor beginning work on project, notify construction inspector or engineer.
- All traffic control devices and their installation and maintenance shall comply with the requirements of the Manual On Uniform Traffic Control Devices (MUTCD) for Streets and Highways. Pawnee Avenue shall be completely closed by Type III barricades placed end-to-end to completely cover the roadway and shoulders. Pawnee Avenue shall be open to through traffic during nighttime hours. No excavation shall be left open during nighttime hours closer than 30 feet from the edge of Pawnee.



UTILITY CONTACTS:

- | | |
|--|--|
| JIM TOBEN
AT&T
154 N. BROADWAY, ROOM 210
WICHITA, KS 67202
24 Hr. Emergency Line
1-800-246-8464 | MARC HENDERSON
COX COMMUNICATIONS
801 EAST DOUGLAS
WICHITA, KS 67202 |
| CALVIN BRIGGS
AQUILLA NETWORKS
1611 SOUTH HOOVER
WICHITA, KS 67209 | JAMES COE
KANSAS GAS SERVICE
1021 EAST 26TH STREET NORTH
WICHITA, KS 67219 |
| MILES CAPPS
WESTAR ENERGY
P.O. BOX 208
WICHITA, KS 67201 | BILL PERKINS
WICHITA WATER DEPARTMENT
455 NORTH MAIN, 8TH FLOOR
WICHITA, KS 67202 |

BENCH MARKS

(City of Wichita Datum)

- BM: #50
Center of "C" in Cornejo on sidewalk, 31' east of \odot Parkridge & 74' north of \odot Pawnee.
Elev. 147.59
- BM: #55
City of Wichita standard disk set in concrete post, 32' south & 10' west of South 1/4 Corner
Sec. 31-T27S-R1W
Elev. 145.53
- BM: #57
 Cut on northeast corner of headwall of RCB, 39' south of \odot Pawnee Ave & 51' east of \odot Lark.
Elev. 143.23

QUANTITIES

ITEM	QUANTITY	UNIT
SWS PIPE RCP 15"	434	L.F.
4" PERFORATED P.V.C.	316	L.F.
INLET, DROP 2'x2'	5	EACH
EXCAVATION	109	CU. YDS.
LOOSE FILL	23	CU. YDS.
TRAFFIC CONTROL	1	LUMP SUM
EROSION CONTROL BMP	1	LUMP SUM
CLEARING AND GRUBBING	1	LUMP SUM
SITE RESTORATION	1	LUMP SUM
FESCUE SOD	1,052	SQ. YDS.
RELOCATE AND RECONSTRUCT PRIVATE SPRINKLER	1	LUMP SUM

- SW Cor. Sec 31-T27S-R1W
PI Sta. 10+00.00, \odot Pawnee Avenue
- N.E. to City Benchmark Disk, 49.1'
 - S.E. to 3 Nails in N.E. Face Power Pole, 52.5'
 - S.W. to 3 Nails in E. Face End Fence Post, 49.9'
 - N.W. to "PK" Nail in Top Fence Post, 67.5'
 - N 20068.40, E 45961.96
- S 1/4 Cor. Sec 31-T27S-R1W
PI Sta. 38+49.12, \odot Pawnee Avenue
- S.S.W. to Brass Disc in Concrete (City Bench Mark), 33.39'
 - S.E. to 3 Nails in Fence Post, 48.62'
 - S.W. to "PK" Nail in 18" Hedge Tree, 36.52'
 - N.E. to "PK" Nail in Power Pole
 - N 20140.10, E 48810.18
- SE Cor. Sec 31-T27S-R1W
PI Sta. 64+88.65, \odot Pawnee Avenue
- N.E. to 3 Nails in N. fc. PP, 58.40'
 - S.E. to 3 Nails in N.E. Face Power Pole, 59.09'
 - S.W. to Center C.O.W. BM disk, 65.5'
 - N 20185.10, E 51449.33

MAY 2007



POE & ASSOCIATES, INC.
CONSULTING ENGINEERS
5940 E. Central, Suite 200 ■ Wichita, KS 67208-4242
Phone 316/685-4114 ■ FAX 316/685-4444

