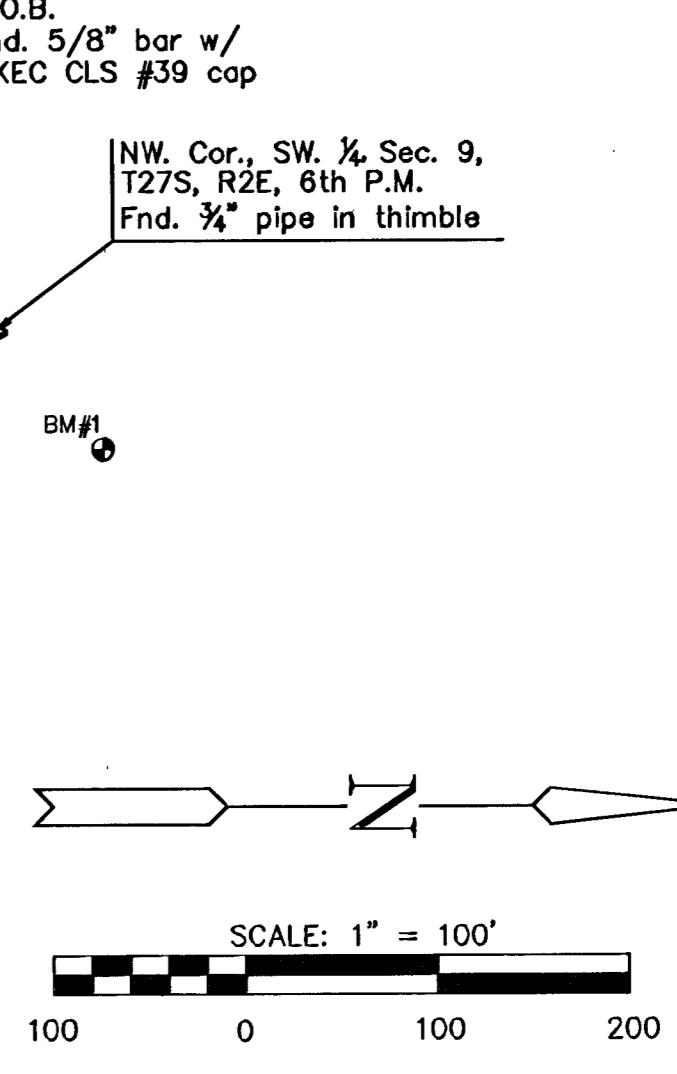
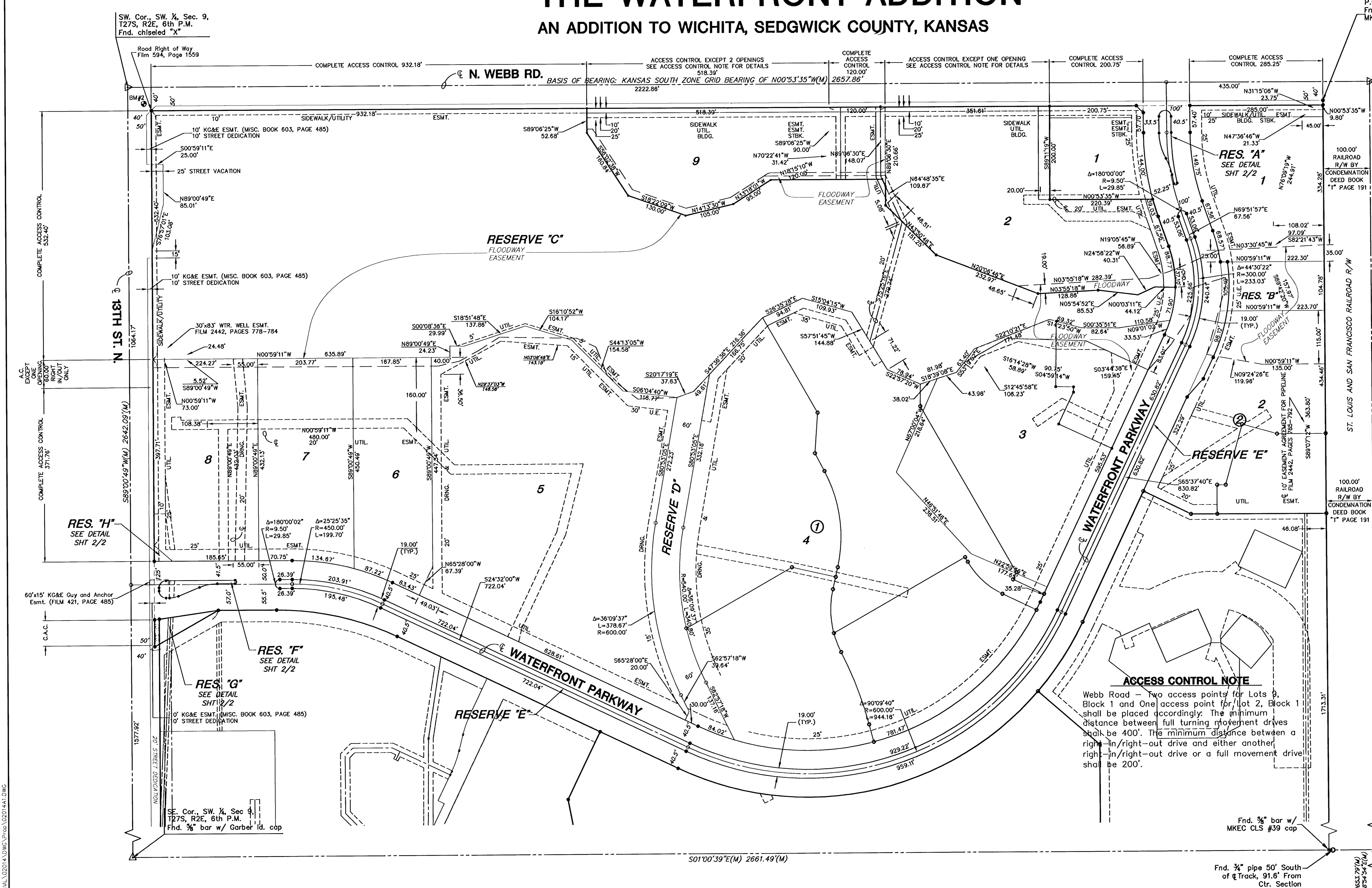


# FINAL PLAT

## THE WATERFRONT ADDITION

### AN ADDITION TO WICHITA, SEDGWICK COUNTY, KANSAS



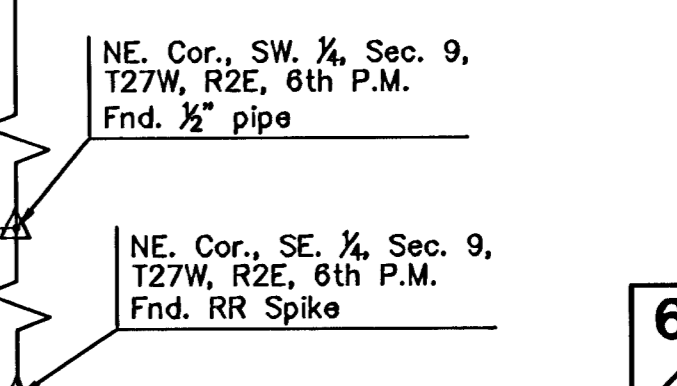
- LEGEND**
- △ = SECTION CORNER MONUMENT FOUND
  - = FOUND PROPERTY CORNER REBAR
  - = SET 5/8" REBAR W/ MKEC CLS #39 CAP
  - B.S. = BUILDING SETBACK
  - U.E. = UTILITY EASEMENT
  - (M) = MEASURED DIMENSION
  - ▨ = STREET DEDICATION
  - ▨ = STREET VACATION

- BENCHMARKS**
- BM#1 Square cut SE. corner headwall 44' N. and 42' E. of W. 1/4 cor., Sec. 9, T27S, R2E ELEV. = 192.73'(City Datum) 1380.13 NGVD
- BM#2 Square cut SW. corner signal light pole base NE. corner Webb and 13th. ELEV. = 185.945'(City Datum) 1373.345' NGVD

MINIMUM PAD ELEVATIONS (LOWEST ELEVATIONS)			
LOT	BLOCK	ELEVATION (CITY DATUM)	ELEVATION (NGVD)
2	1	188.1	1375.5
3	1	188.1	1375.5
4	1	187.6	1375.0
5	1	187.6	1375.0
6	1	187.0	1374.4
7	1	187.0	1374.4
8	1	187.0	1374.4
9	1	187.0	1374.4
1	2	189.1	1376.5
2	2	189.1	1376.5

**ACCESS CONTROL NOTE**

Webb Road - Two access points for Lots 9, Block 1 and One access point for Lot 2, Block 1 shall be placed accordingly. The minimum distance between full turning movement drives shall be 400'. The minimum distance between a right-in/right-out drive and either another right-in/right-out drive or a full movement drive shall be 200'.



H:\CIVIL\2014\DWG\Plat\2014A1.DWG

H:\CIVIL\2014\DWG\Plat\2014A1.DWG

14-01-03-03

6/6