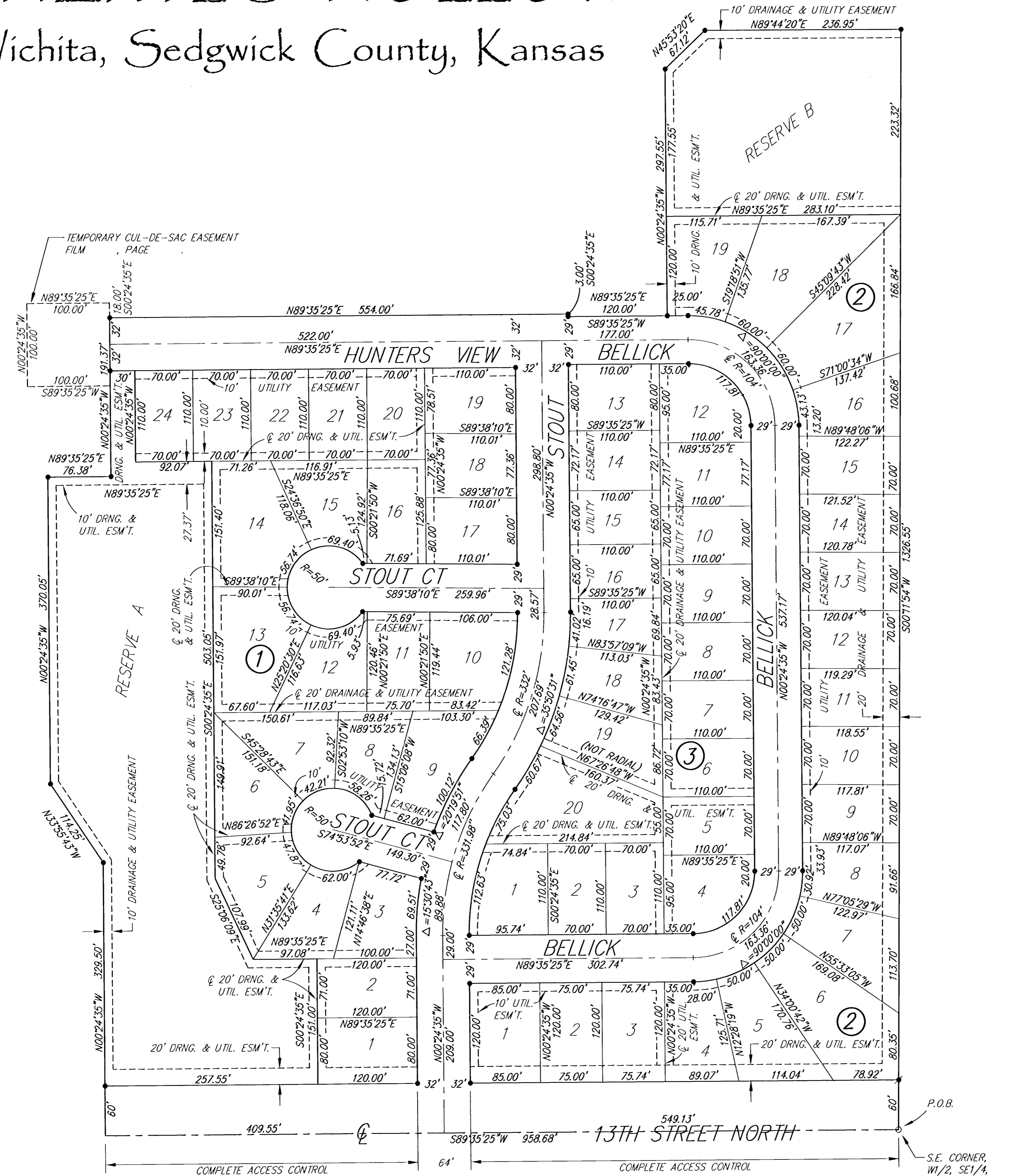


# CHERYL'S HOLLOW

Wichita, Sedgwick County, Kansas



(A) = ASSUMED  
M = MEASURED

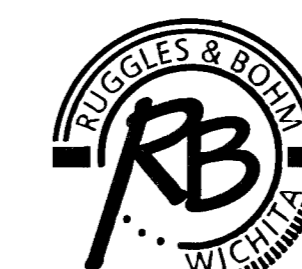
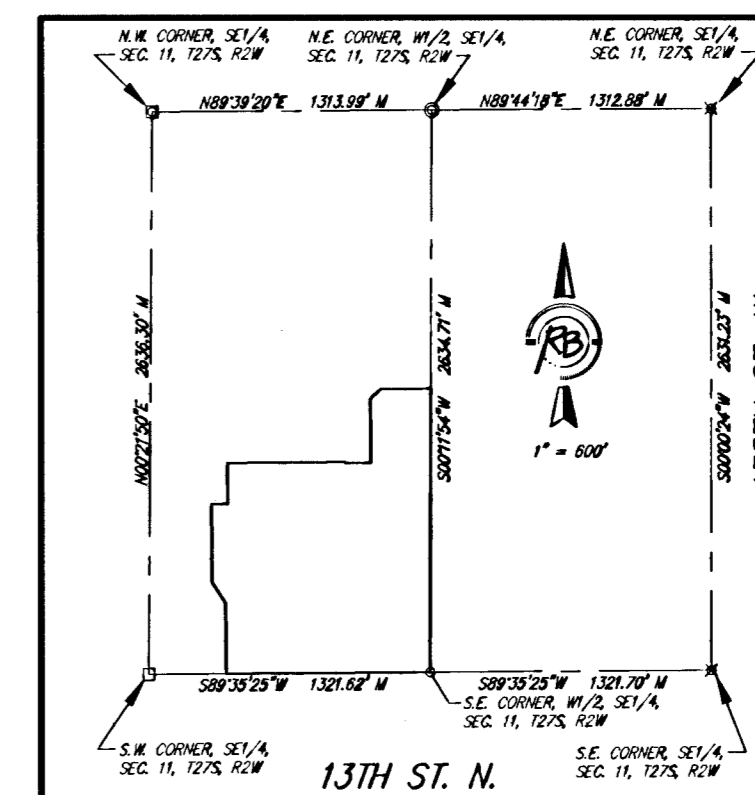
SURVEY MARKER LEGEND

- = STONE
- ⊗ = NAIL IN CENTER OF STONE
- = 1/2" IRON PIPE
- ⊙ = 1" IRON PIPE
- ⊗ = 3/4" IRON PIPE W/SEDGWCK COUNTY ALUMINUM CAP (FOUND)
- = 5/8" REBAR W/R&B CAP (SET)
- ◆ = 5/8" REBAR W/BAUGHMAN CAP (FOUND)

BENCH MARK: COW BENCHMARK AT THE SOUTHWEST CORNER OF INTERSECTION OF 1.35TH ST. W. AND 1.31TH ST. N., EAST SIDE OF CONC. BASE FOR HLP 30'± S. OF CENTER LINE AND 35'± W. OF CENTER LINE ELEV.=1355.65 (M.S.L.)

ON-SITE BENCH MARK: R.R. SPIKE ON NORTH FACE OF HIGHLINE POWER POLE 131 FEET WEST AND 28 FEET SOUTH OF THE S.E. CORNER, W1/2, SE1/4, SEC. 11, T27S, R2W ELEV.=1365.16 (M.S.L.)

| MINIMUM BUILDING PAD ELEVATION FOR LOWEST OPENING INTO STRUCTURES |                                     |                       |
|---|-------------------------------------|-----------------------|
| BLOCK   | LOT NO.                             | ELEVATION (N.G. V.D.) |
| 1   | 1, 2, 3, 4, 5, 6, 7, 13, 14, 23, 24 | 1365                  |
| 2   | 17, 18, 19                          | 1364                  |



**Ruggles & Bohm, P.A.**  
 Engineering, Surveying, Land Planning  
 924 North Main (316) 264-8008  
 Wichita, Kansas 67203 (316) 264-4621 fax  
 www.rbkansas.com E-mail: info@rbkansas.com