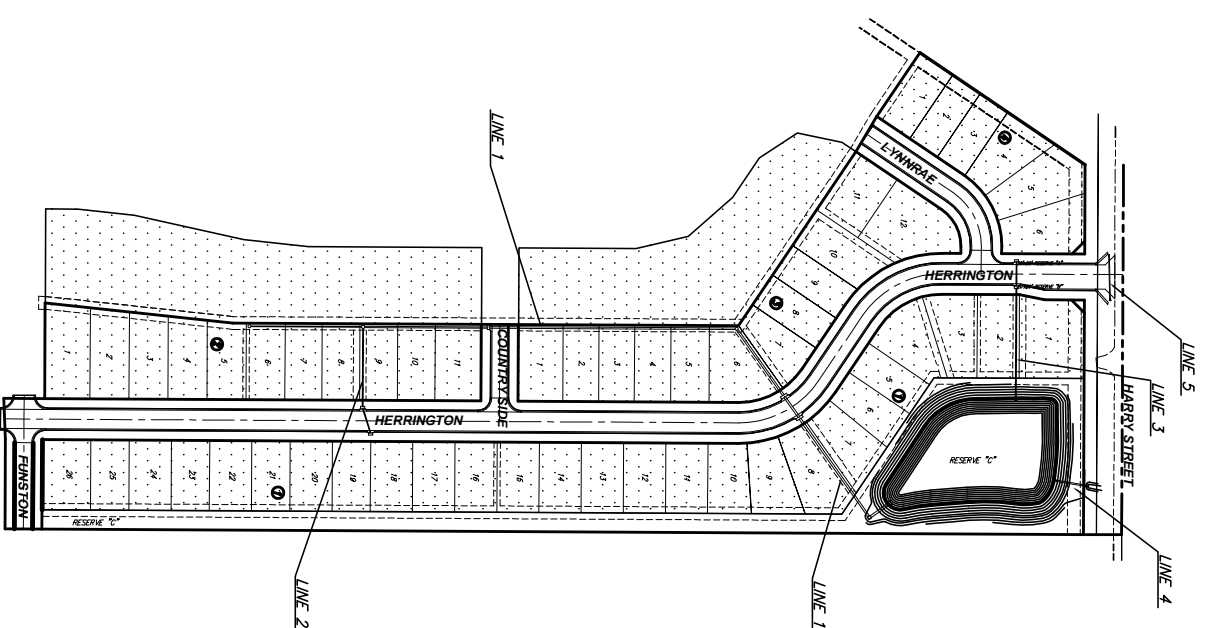


# STORM WATER DRAIN #322 WILLOW CREEK ESTATES PHASE 1

## GENERAL NOTES

- Contractor will be required to provide a minimum advance notice of twenty-four (24) hours to utility companies prior to starting any excavation as follows:  
 Kansas One-Call 1-800-DIG-SAFE
- The Contractor must notify the following in case of an emergency:  
 Cox Communications 262-0661  
 Kansas Gas Service 363-6600  
 Westar 363-8600  
 Peoples Natural Gas Company 1-800-303-0357  
 SBC 1-800-286-8313  
 City of Wichita Water Department 262-6000  
 City of Wichita Sewer Maintenance 262-6000
- Underground utility service lines and overhead utility pole lines are to be adjusted as necessary by others prior to construction unless the plans specifically call for their adjustment by the Contractor or unless the plans specifically identify a utility to be adjusted by its owner during construction. Existing utilities and their location, as shown on the plans, represent the best information obtainable for design. Location information has been obtained from the various utility companies and is either from company record drawings or company-provided field locations. The Contractor will be required to work around existing utilities within the right-of-way which do not conflict with proposed construction.
- Rubble from the removal of miscellaneous structures and excess excavation which is to be wasted shall be disposed of on sites to be provided by the Contractor. These sites shall be approved by the Engineer, as to suitability, appearance and site location. Locations that, in the opinion of the Engineer, will leave an unsightly appearance will not be approved.
- Any miscellaneous rubble encountered during construction shall be removed by the Contractor, subsidiary to bid item for Site Clearing and Restoration.
- All disposal sites must be approved by the Kansas Department of Health and Environment. Material either stockpiled or disposed of in a flood plain would require a Kansas State Board of Agriculture permit. Any material dumped in waters of the United States or wetlands is subject to U.S. Corps permitting regulations. Any material buried or stockpiled beyond approved of Engineers construction limits would require additional archaeological investigations unless buried in a previously approved borrow location.
- The Engineer shall take field ties to all quarter section corners. The Contractor shall set a City survey monument in the required location where such quarter section corners fall within the limits of pavement construction. Survey monuments will be furnished by the City. The Engineer will accurately locate and install the iron at the quarter section corner. This work will not be paid for directly, but shall be considered subsidiary to the other pay items of work in the contract.
- The Contractor shall notify pipeline companies at least 24 hours in advance of any work being performed across and/or adjacent to pipelines.
- The Contractor shall give all property owners and/or tenants of developed property directly abutting the construction of this project a minimum of ten (10) days advance notice prior to start of construction.
- The Contractor shall seed, fertilize and mulch all disturbed areas per City of Wichita specifications upon completion of construction.
- All materials and construction methods shall adhere to City of Wichita standard specifications.
- Trees to be removed only as necessary for construction.
- Light stone riprap shall be furnished and installed in accordance with Section 304 of the City of Wichita standard specifications.
- Reserves shall be permanently seeded as part of this project per City of Wichita Specifications.

Project # 468-84339  
OCA NO. 751448

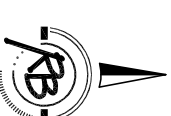


## BENCHMARK

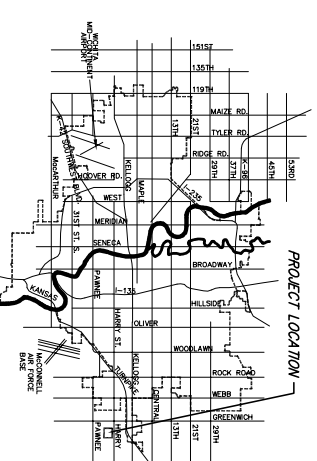
R&B BRASS DISC SET IN CONCRETE, 70' S. AND 10' W. OF THE N.E. COR. NW1/4, SEC. 34, 127S, R2E  
 ELEV = 1331.77 NGVD 29  
 COW BENCHMARK: NORTHEAST CORNER OF INTERSECTION OF HARRY & GREENWICH, SOUTHWEST CORNER OF CONCRETE BASE FOR TRAFFIC SIGNAL LIGHT POLE  
 ELEV = 1343.86 NGVD 29

## INDEX

- TITLE SHEET
- 1 SITE GRADING - CONTOURS
- 2 SITE GRADING - GRADE TICKS
- 3 POND GRADING PLAN
- 4 EROSION CONTROL PLAN
- 5 SOIL EROSION BMP DETAILS
- 6-10 INCIDENTAL DRAINAGE - STORM SEWER
- 11-13 NET MAP
- 14-18 INLET DETAILS
- 19 TYPE 2 MANHOLE DETAILS
- 20 REINFORCED CONCRETE MANHOLE DETAIL
- 21 REINFORCED CONCRETE MANHOLE DETAIL
- 22 FINAL PLAN



Scale: 1" = 150'



## VICINITY MAP



IMPROVEMENT DISTRICT

CITY OF WICHITA, KANSAS

JAMES ARMOUR, P.E. - CITY ENGINEER



Ruggles & Bohm, P.A.  
 Engineering Surveying Land Planning  
 924 North Main (316) 264-8008  
 Wichita, Kansas 67203 (316) 264-4621 fax  
 www.rbkansas.com E-mail: info@rbkansas.com  
 RB Project 3029E