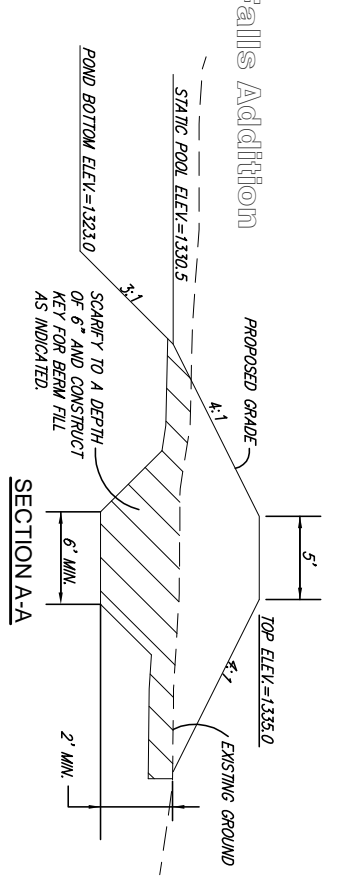
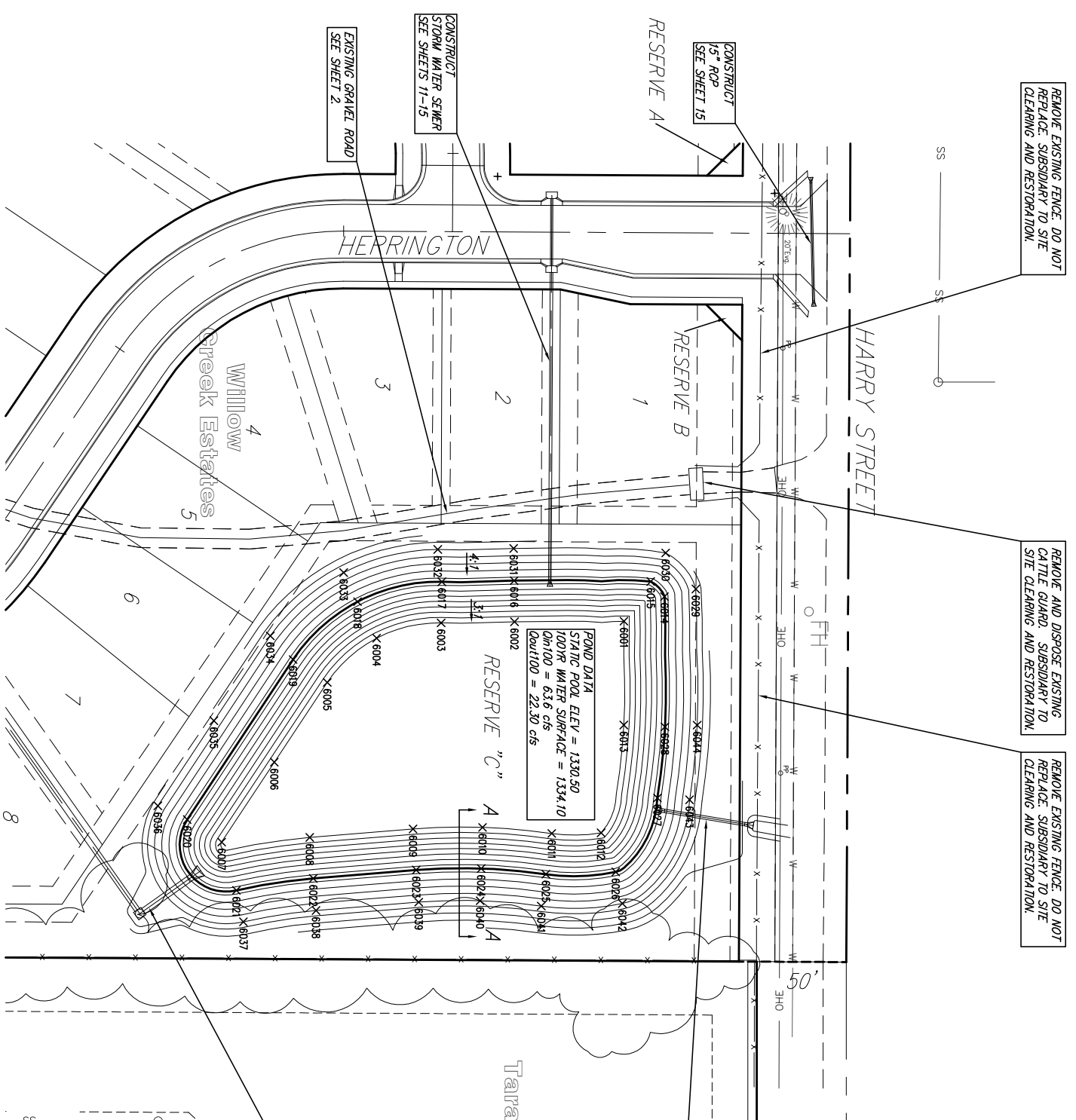


POINT NUMBER	NORTHING	EASTING	ELEVATION
6001	25191.7457	19829.0583	1333.00
6002	25130.5620	19829.3688	1333.00
6003	25089.6107	19829.9561	1333.00
6004	25053.5599	19838.4989	1333.00
6005	25025.9971	19863.2564	1333.00
6006	24996.3833	19907.7823	1333.00
6007	24966.9907	19952.4545	1333.00
6008	25016.1969	19949.8432	1333.00
6009	25073.8788	19945.1436	1333.00
6010	25112.7098	19944.2544	1333.00
6011	25151.4023	19947.6489	1333.00
6012	25178.9659	19947.2982	1333.00
6013	25191.6648	19887.0789	1333.00
6014	25214.3689	19815.2692	1330.50
6015	25206.7013	19806.8423	1330.50
6016	25130.4079	19806.3674	1330.50
6017	25089.9994	19806.9594	1330.50
6018	25042.8931	19818.1220	1330.50
6019	25006.8776	19850.4717	1330.50
6020	24947.7454	19939.8601	1330.50
6021	24975.2091	19979.4629	1330.50
6022	25018.1746	19972.7581	1330.50
6023	25075.6731	19968.0735	1330.50
6024	25119.9669	19967.2424	1330.50
6025	25148.1312	19970.4151	1330.50
6026	25187.1394	19969.1521	1330.50
6027	25210.4214	19927.8288	1330.50
6028	25214.6450	19888.0630	1330.50
6029	25231.8563	19810.9999	1335.00
6030	25215.0460	19790.8930	1335.00
6031	25130.1425	19788.3692	1335.00
6032	25087.6995	19788.9471	1335.00
6033	25035.1464	19801.8623	1335.00
6034	24994.1712	19837.2131	1335.00
6035	24962.6234	19884.6335	1335.00
6036	24931.3256	19832.2193	1335.00
6037	24979.1680	19997.0222	1335.00
6038	25019.6844	19990.6946	1335.00
6039	25077.0774	19986.0186	1335.00
6040	25111.3855	19985.2330	1335.00
6041	25145.5712	19988.2321	1335.00
6042	25190.8466	19986.7662	1335.00
6043	25228.3923	19928.8532	1335.00
6044	25232.6134	19887.1447	1335.00



NOTE: THE POND SIDES ARE TO BE SCARPED A MINIMUM OF 12 INCHES. MOISTURE CONDITIONED AND RECOMPACTED TO A MINIMUM OF 95 PERCENT OF STANDARD PROCTOR DENSITY (ASTM D-698) FROM MINUS 3 TO PLUS 3 PERCENT OF OPTIMUM MOISTURE CONTENT. OVER EXCAVATE A MINIMUM OF 1 FOOT AND REPLACE WITH CLAY. MINIMUM PI OF THE SOIL USED FOR THE POND LINER IS 30.

WILLOW CREEK ESTATES PHASE 1
POND GRADING PLAN
WICHITA, KANSAS

Ruggles & Bohm, P.A.
Engineering Surveying Land Planning

824 North Main
Wichita, Kansas 67203
www.rdbkansas.com

(316) 264-8008
(316) 264-4821 fax
E-mail: info@rdbkansas.com

PROJECT NUMBER: 488-84339
DATE: June 4, 2007

DESIGN: AML
DRAWN: MJP
REVIEW: [blank]
SHEET: 4 OF 22