

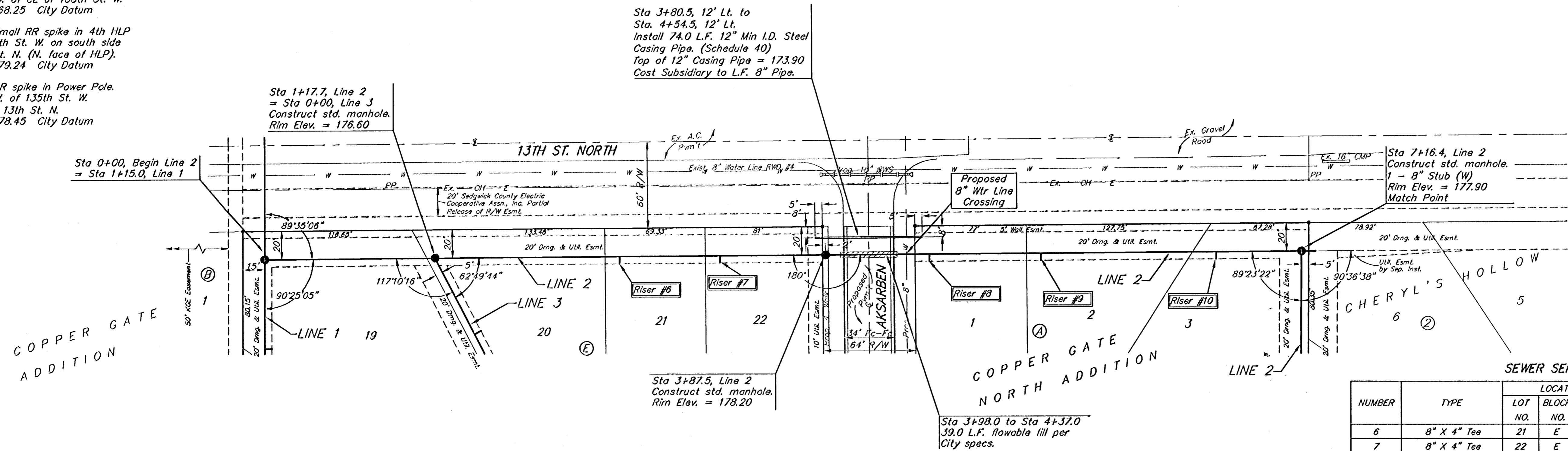
**BENCHMARKS:**

BM #1: C.O.W. disc at SW corner of intersection.  
30.00' ± S. of CL of 13th St. N.  
35.00' ± W. of CL of 135th St. W.  
Elev. = 168.25 City Datum

BM #2: Small RR spike in 4th HLP  
W. of 135th St. W. on south side of 13th St. N. (N. face of HLP).  
Elev. = 179.24 City Datum

BM #3: RR spike in Power Pole.  
1321.65 W. of 135th St. W.  
30' N. of 13th St. N.  
Elev. = 178.45 City Datum

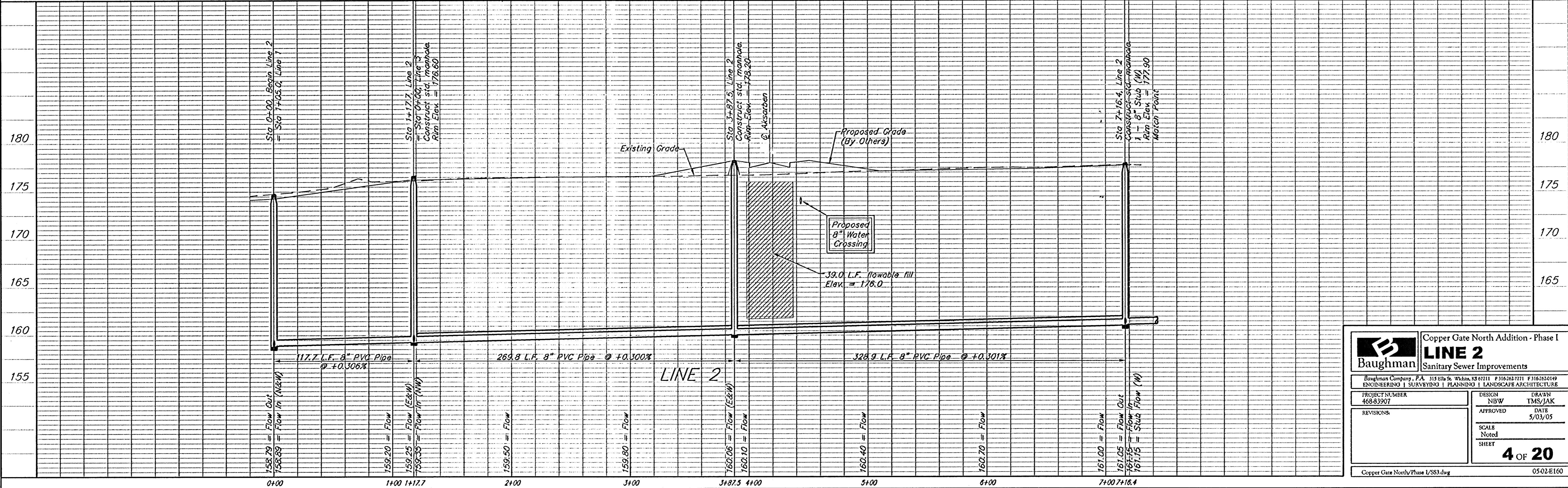
Scale: 1" = 40' Horizontal  
1" = 5' Vertical  
• = Iron



**SEWER SERVICE TABLE**

NUMBER	TYPE	LOCATION			FOR INFORMATION ONLY		
		LOT NO.	BLOCK NO.	LINE NO.	STATION/DIRECTION	APPROXIMATE LENGTH 4" PIPE	
					VERTICAL	HORIZONTAL	
6	8" X 4" Tee	21	E	2	2+45/Rt. 4.3	12'	5'
7	8" X 4" Tee	22	E	2	3+15/Rt. 1.3	12'	5'
8	8" X 4" Tee	1	A	2	4+89/Rt. 5.3	13'	5'
9	8" X 4" Tee	2	A	2	5+36/Rt. 3.1	11.5'	5'
10	8" X 4" Tee	3	A	2	6+88/Rt. 5.1	11.5'	5'

NOTE: Vertical Riser Pipe shall be extended to 2' minimum above ground water elevation and 4' maximum below proposed ground elevation.



**Baughman** Engineering & Planning

Copper Gate North Addition - Phase I  
**LINE 2**  
Sanitary Sewer Improvements

PROJECT NUMBER: 468-83907  
DESIGN: NBW  
DRAWN: TMS/JAK  
APPROVED: DATE: 5/03/05

SCALE: Noted  
SHEET: **4 OF 20**

Copper Gate North/Phase I/SS3.dwg 0502-E160