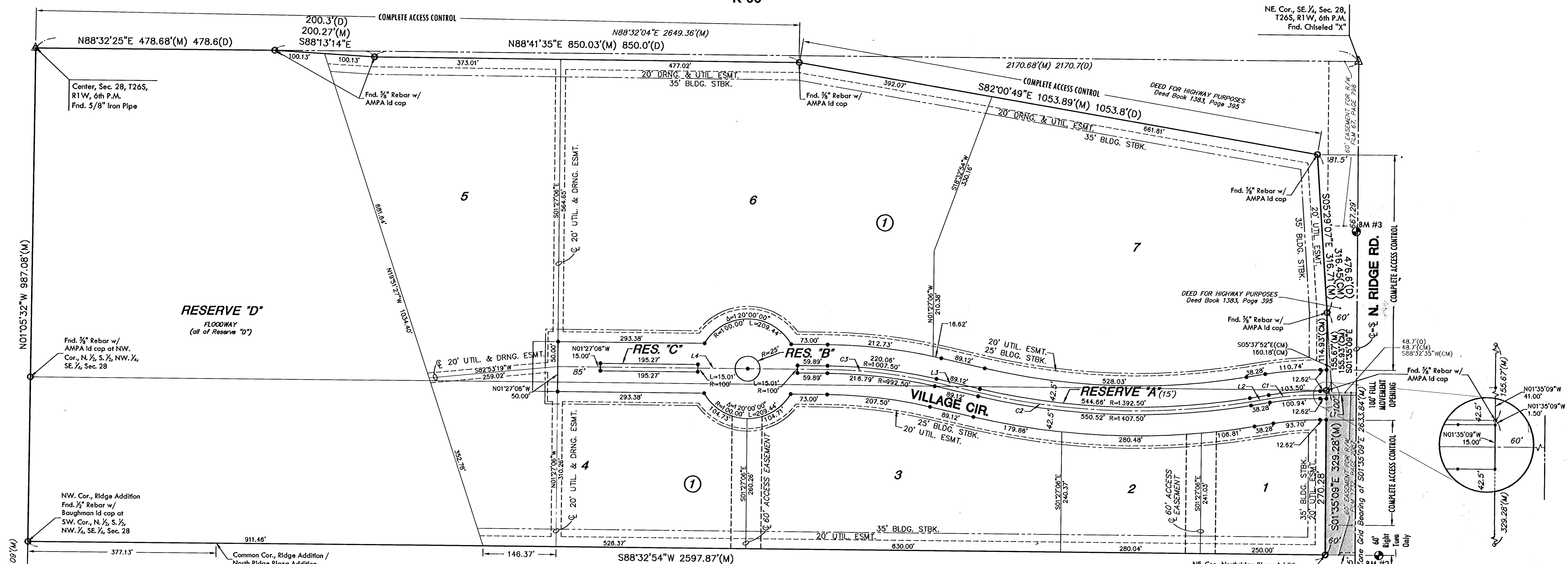


# FINAL PLAT

## NORTH RIDGE VILLAGE ADDITION

### AN ADDITION TO WICHITA, SEDGWICK COUNTY, KANSAS

K-96



**LINE TABLE**

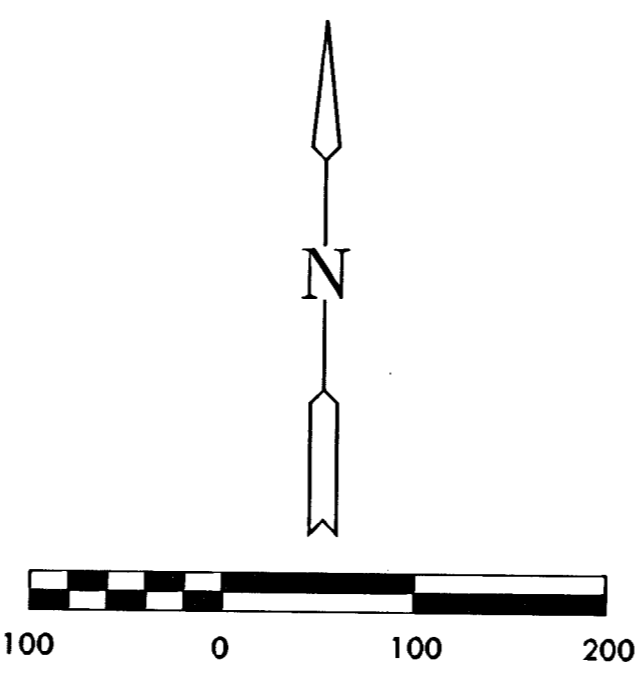
LINE	LENGTH	BEARING
L1	72.63	S88°24'51"W
L2	38.28	S78°39'10"W
L3	89.12	N78°56'13"W
L4	539.60	S88°32'54"W

**CURVE TABLE**

CURVE	LENGTH	RADIUS	DELTA
C1	102.22	600.00	9°45'41"
C2	547.59	1,400.00	22°24'38"
C3	218.42	1,000.00	12°30'53"

**MINIMUM PAD ELEVATIONS  
(LOWEST OPENINGS)**

LOTS	BLOCK	ELEVATION	
		(CITY DATUM)	(NGVD)
1,2,3 and 4	1	149.1	1336.5
5, 6, and 7	1	148.1	1335.5



**NOTE**

This plat shall adhere and conform to the recitals of CUP DP-280 as approved and recorded at the Wichita-Sedgwick County Metropolitan Planning Area Department.

**LEGEND**

- △ = Section Corner Monument Found
- = Found Survey Monument
- = 3/8" Rebar w/ AMPA Id. cap EXCEPT where annotated
- = Set 3/8" Rebar w/ MKEC CLS 39 Id. cap
- (M) = Measured
- (D) = Deeded
- (CM) = Calculated from measured
- ▭ = Street Dedication (width varies)

**BENCH MARKS**

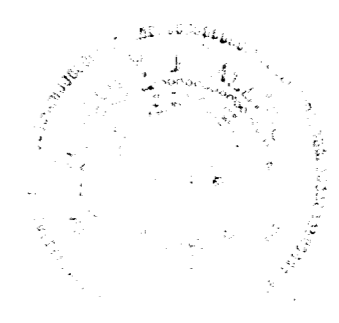
- BM #1 Square cut on SE. corner of S. hubguard of R.C.B.C., 73' West of SE. Cor., SE. 1/4, Sec. 28, T26S, R1W. Elev. = 1331.52 (NGVD) 144.12 (City)
- BM #2 Railroad spike in W. face of power pole East of Ridge and 5th pole S. of K-96 (120' E. of SE. corner of Plat) Elev. = 1336.30 (NGVD) 148.90 (City)
- BM #3 Square cut top of curb of W. side of median island and 10' N. of S. end; said median island lying South of K-96. Elev. = 1335.38 (NGVD) 147.98 (City)

NW. Cor., Ridge Addition  
Fnd. 1/2" Rebar w/  
Baughman Id cap at  
SW. Cor., N. 1/2, S. 1/2,  
NW. 1/4, SE. 1/4, Sec. 28

SW. Cor., SE. 1/4, Sec. 28,  
T26S, R1W, 6th P.M.  
Fnd. 5/8" Iron Pipe

NE. Cor., SE. 1/4, Sec. 28,  
T26S, R1W, 6th P.M.  
Fnd. Chiseled "X"

NE. Cor., Northridge Plaza Addition  
Fnd. 3/8" Rebar w/  
AMPA Id cap  
P.O.B.  
5'x30' Grant of Right-of-Way  
to Kansas Gas and Electric Company  
Film 1932, Page 1560



**MKEC**  
ENGINEERING  
CONSULTANTS  
511 N. WOOD ROAD  
WICHITA, KS. 67208  
316.262.9000