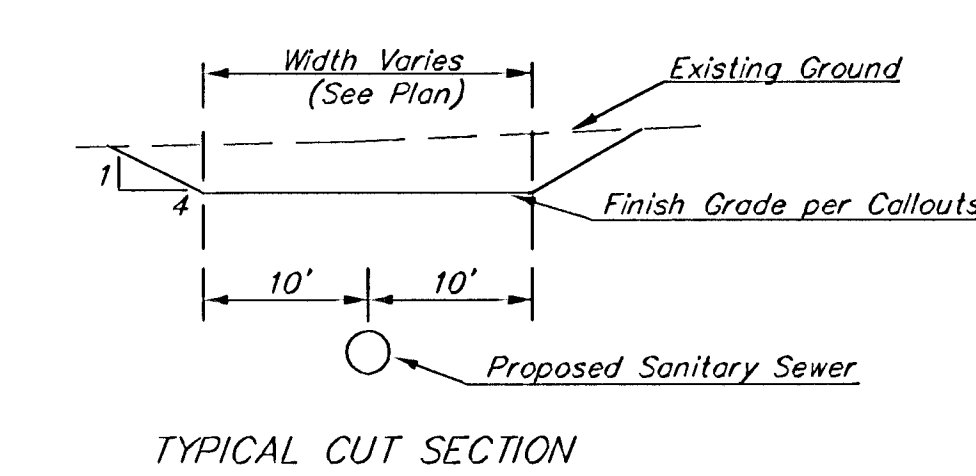
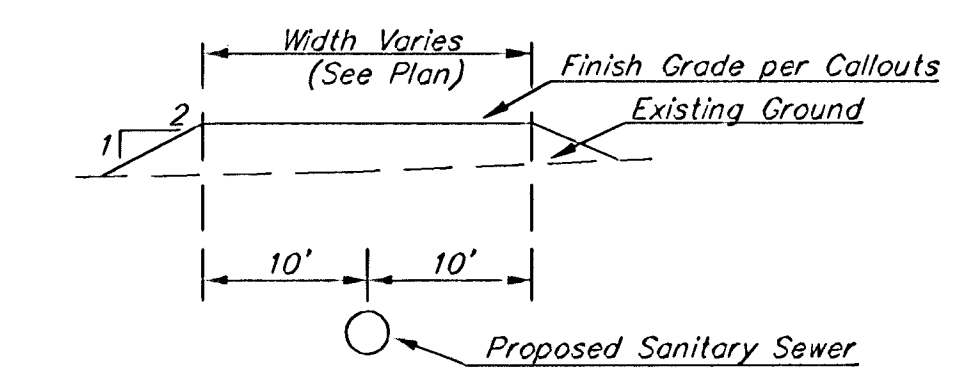
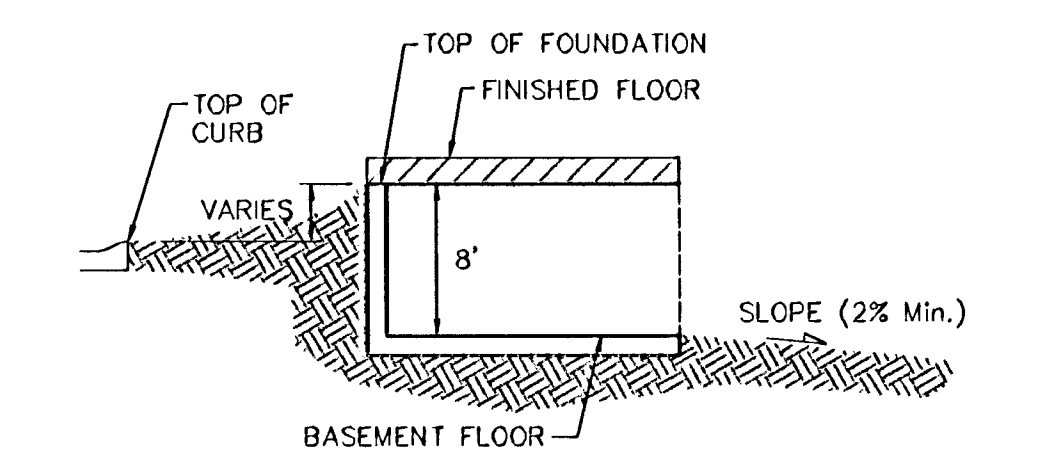
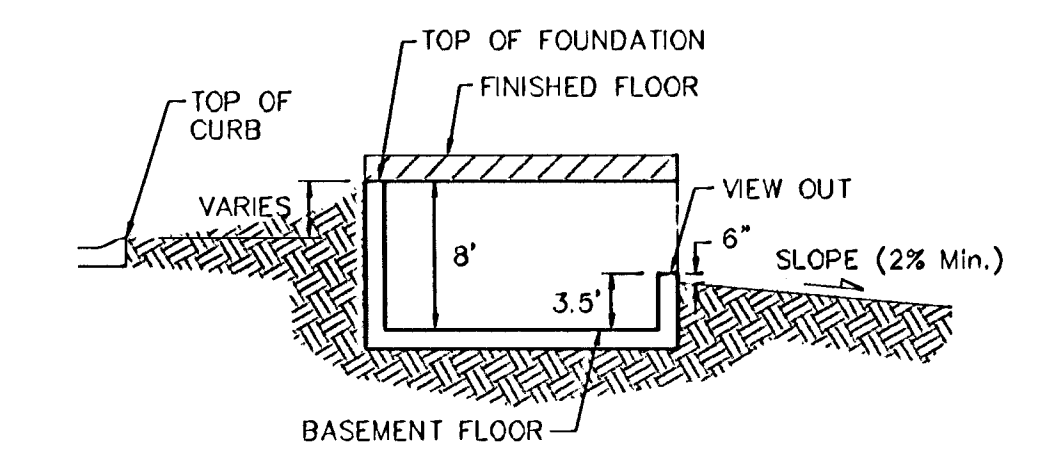
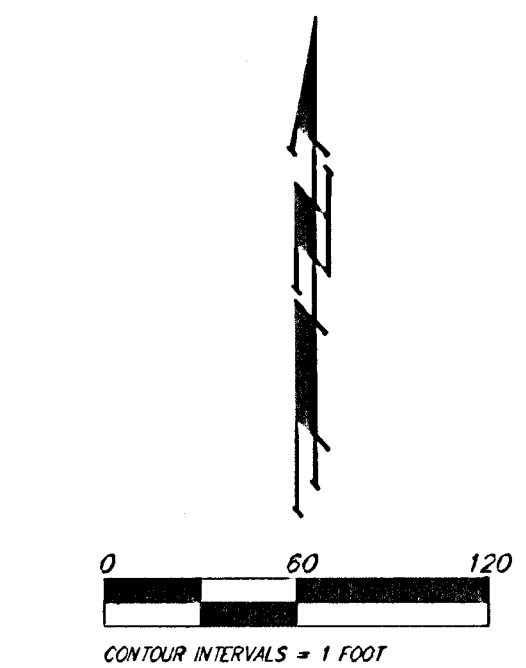
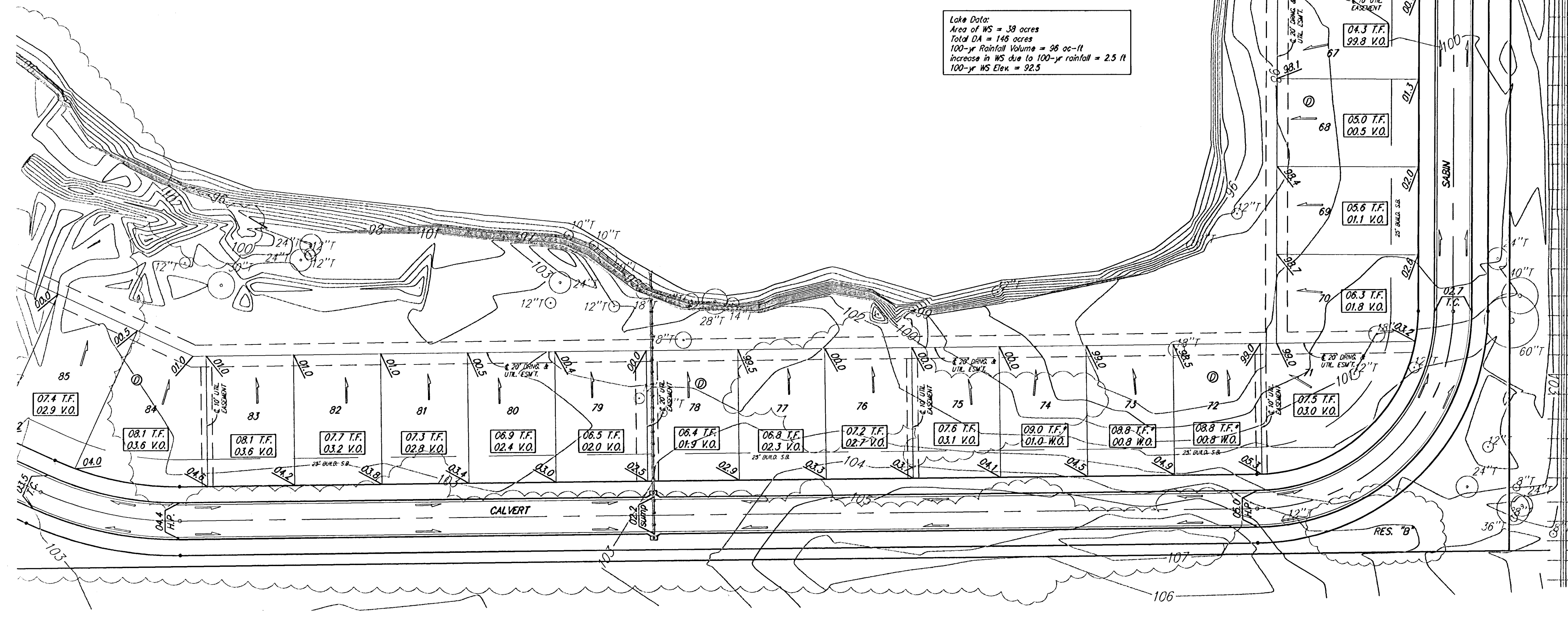


**Benchmarks:**  
 Hoover and MacArthur ( 39th St. South )  
 COW Bench Mark, NE corner of intersection.  
 41.60 ft North of center line.  
 69.00 ft East of center line.  
 20.00 ft East of guy pole.  
 79.80 ft NE of Section corner iron.  
 City 121.22 ft  
 MSL 1308.62 ft

Big Ditch and MacArthur  
 COW Bench Mark, West bound lane,  
 east end of bridge.  
 East of Hoover.  
 City 116.52 ft  
 MSL 1303.92 ft

acres  
 res = 98 ac-ft  
 to 100-yr rainfall = 2.5 ft  
 92.5

**Lake Data:**  
 Area of WS = 38 acres  
 Total DA = 146 acres  
 100-yr Rainfall Volume = 98 ac-ft  
 increase in WS due to 100-yr rainfall = 2.5 ft  
 100-yr WS Elev. = 92.5



▨ = Easements To Be Graded  
 Approximate Easement Grading Quantities:  
 (For Information Only)  
 Excavation: \_\_\_\_\_ C.Y.  
 Fill: \_\_\_\_\_ C.Y.

The contractor shall grade the easements as shown to the elevations given on the easement grading plan. All costs for grading shall be incidental to the Easement Grading Bid Item.

The contractor shall 'straight' grade the easements between the elevations given. Where a callout designates 'Match', the contractor will grade to the existing ground elevation.

	BLUE LAKE ADDITION	
	<b>ESMT GRADING</b>	
LATERAL 1, MAIN 22, S.W.I.		
Baughman Company, P.A. 315 Ellis St. Wichita, KS 67211 P 316-262-7271 F 316-262-0149 ENGINEERING   SURVEYING   PLANNING   LANDSCAPE ARCHITECTURE		
PROJECT NUMBER 468-83862	DESIGN	DRAWN
REVISIONS:	APPROVED	DATE 9/15/04
	SCALE NOTED	
	SHEET	<b>13 OF 22</b>