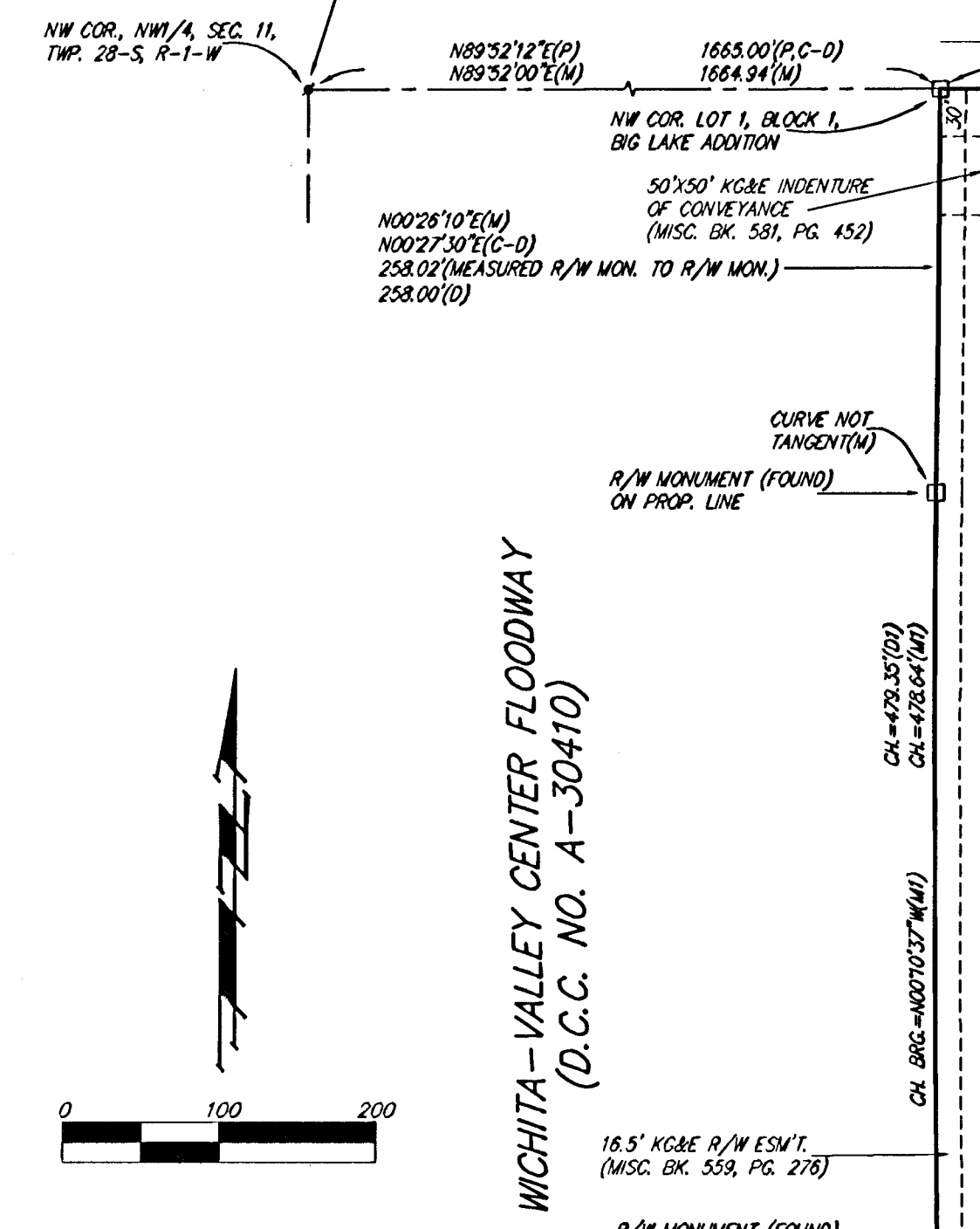
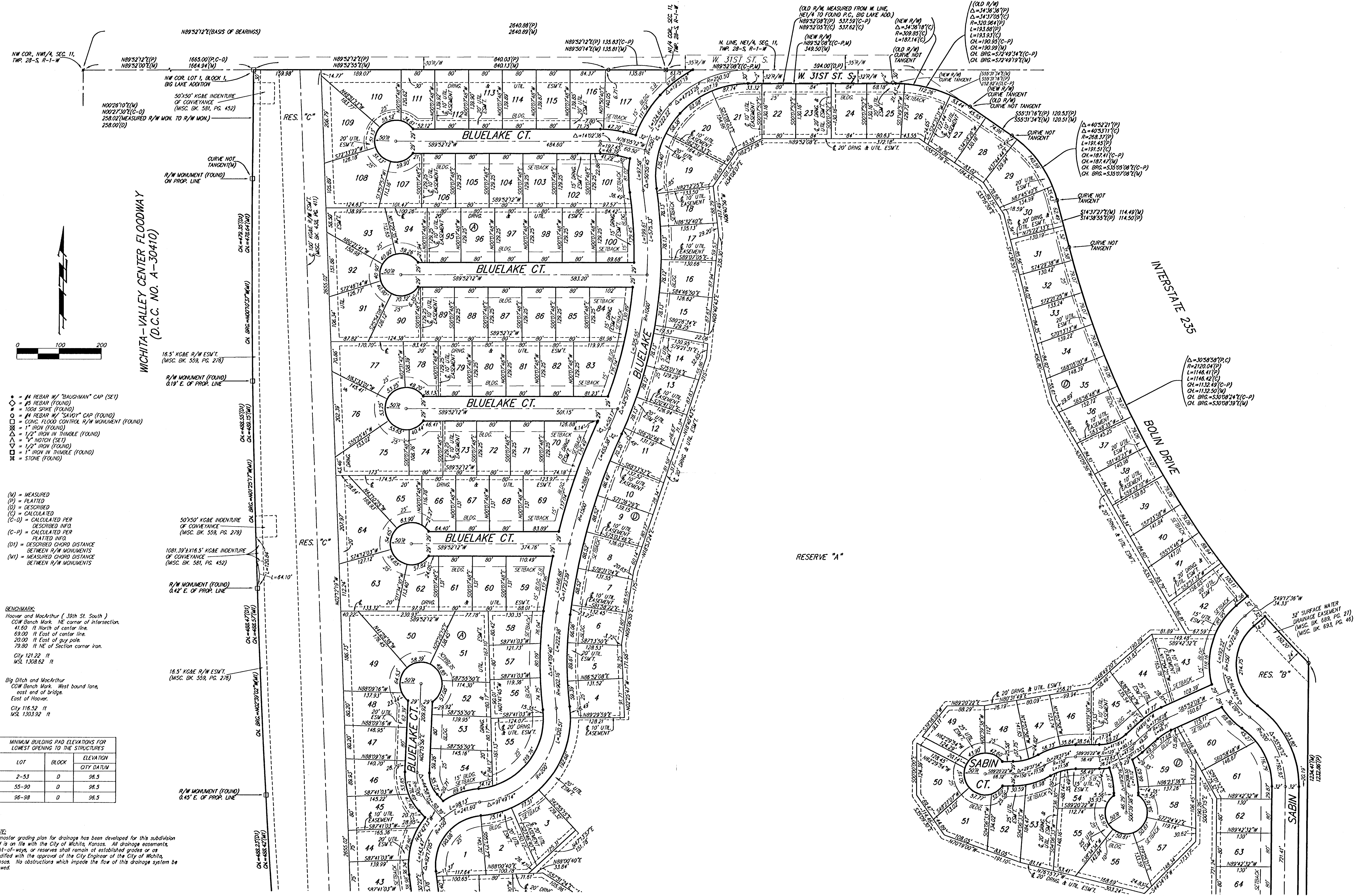


BLUE LAKE ADDITION WICHITA, SEDGWICK COUNTY, KANSAS



- #4 REBAR W/ "BAUGHMAN" CAP (SET)
 - ◊ #5 REBAR (FOUND)
 - 100# SPIRE (FOUND)
 - ◊ #4 REBAR W/ "SAVOY" CAP (FOUND)
 - ◊ CONC. FLOOD CONTROL R/W MONUMENT (FOUND)
 - ◊ 1" IRON (FOUND)
 - ◊ 1/2" IRON W/ THIMBLE (FOUND)
 - ◊ 1" NOTCH (SET)
 - ◊ 1/2" IRON (FOUND)
 - ◊ 1" IRON W/ THIMBLE (FOUND)
 - ◊ STONE (FOUND)
- (M) = MEASURED
(P) = PLATTED
(D) = DESCRIBED
(C) = CALCULATED
(C-D) = CALCULATED PER DESCRIBED INFO.
(C-P) = CALCULATED PER PLATTED INFO.
(DI) = DESCRIBED CHORD DISTANCE BETWEEN R/W MONUMENTS
(MI) = MEASURED CHORD DISTANCE BETWEEN R/W MONUMENTS

BENCHMARK:
Hoover and MacArthur (39th St. South)
COW Bench Mark. NE corner of intersection.
41.60 ft North of center line.
69.00 ft East of center line.
20.00 ft East of guy pole.
79.89 ft NE of Section corner iron.
City 121.22 ft
MSL 1308.82 ft

Big Ditch and MacArthur
COW Bench Mark. West bound line,
east end of bridge.
East of Hoover.
City 116.52 ft
MSL 1303.92 ft

MINIMUM BUILDING PAD ELEVATIONS FOR LOWEST OPENING TO THE STRUCTURES		
LOT	BLOCK	ELEVATION CITY DATUM
2-53	D	98.5
55-90	D	98.5
95-98	D	98.5

NOTE:
A master grading plan for drainage has been developed for this subdivision and is on file with the City of Wichita, Kansas. All drainage easements, right-of-ways, or reserves shall remain of established grades or as modified with the approval of the City Engineer of the City of Wichita, Kansas. No obstructions which impede the flow of this drainage system be allowed.

10-50-80-14