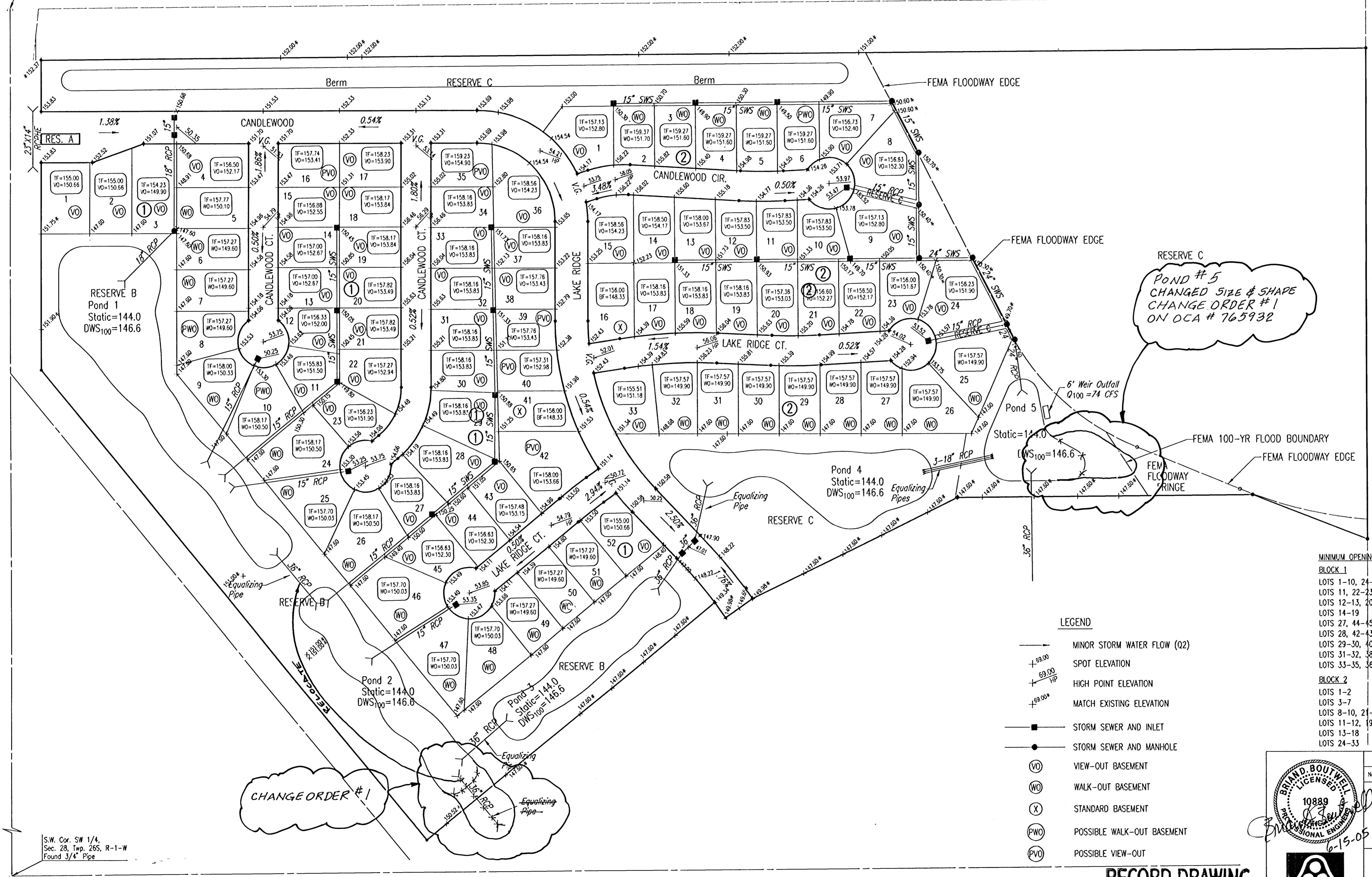
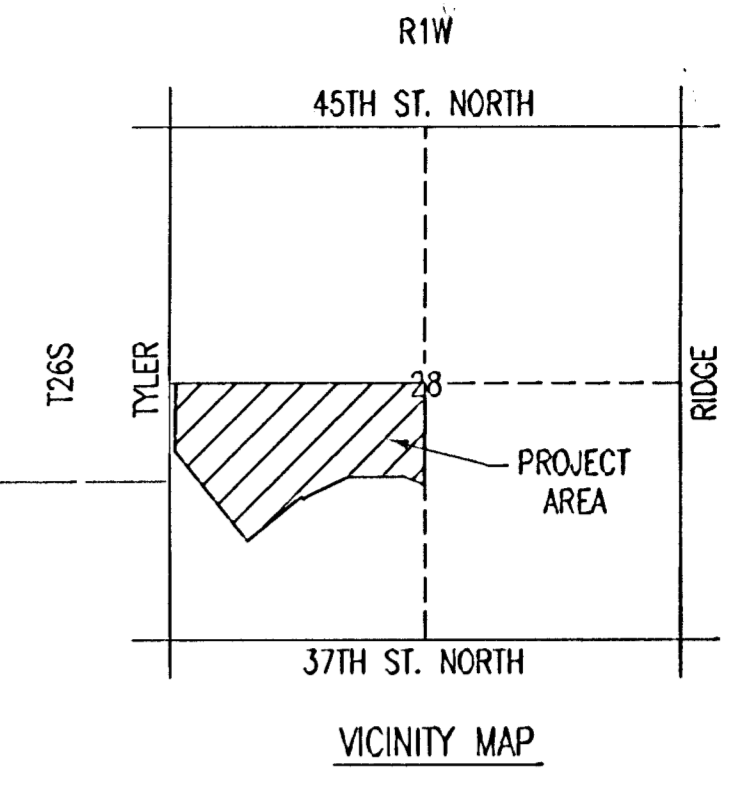


FOUR-CORNER PLAN AVALON PARK 3RD AN ADDITION TO WICHITA, SEDGWICK COUNTY, KANSAS

N.W. Corner SW 1/4, Sec. 28
Twp. 26S, R-1-W
Found 3/4" Iron Pipe
w/ LS875 Cop-Moehring
POINT OF COMMENCEMENT

N.E. Corner SW 1/4, Sec. 28
Twp. 26S, R-1-W
Found 3/4" Rebar

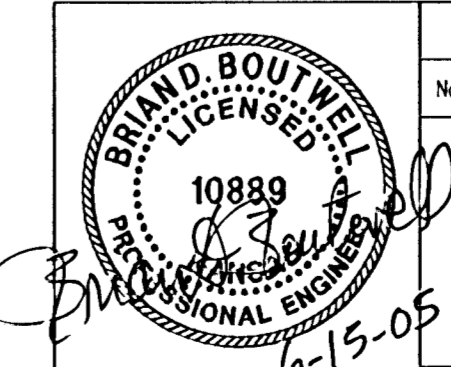


POND # 5
CHANGED SIZE & SHAPE
CHANGE ORDER # 1
ON OCA # 765932

CHANGE ORDER # 1

- LEGEND**
- MINOR STORM WATER FLOW (Q2)
 - SPOT ELEVATION
 - HIGH POINT ELEVATION
 - MATCH EXISTING ELEVATION
 - STORM SEWER AND INLET
 - STORM SEWER AND MANHOLE
 - VIEW-OUT BASEMENT
 - WALK-OUT BASEMENT
 - STANDARD BASEMENT
 - POSSIBLE WALK-OUT BASEMENT
 - POSSIBLE VIEW-OUT

	MINIMUM OPENINGS	ELEVATION (N.G.V.D.)	City Datum
BLOCK 1			
LOTS 1-10, 24-26, 46-52		1337.00	149.60
LOTS 11, 22-23		1338.70	151.30
LOTS 12-13, 20-21		1338.85	151.45
LOTS 14-19		1339.25	151.85
LOTS 27, 44-45		1339.00	151.60
LOTS 28, 42-43		1339.45	152.05
LOTS 29-30, 40-41		1339.65	152.25
LOTS 31-32, 38-39		1340.13	152.73
LOTS 33-35, 36-37		1340.53	153.13
BLOCK 2			
LOTS 1-2		1339.10	151.70
LOTS 3-7		1339.00	151.60
LOTS 8-10, 21-23		1338.80	151.40
LOTS 11-12, 19-20		1339.73	152.33
LOTS 13-18		1340.13	152.73
LOTS 24-33		1337.00	149.60



No.	Revision	By	Date

4-CORNER LOT GRADING PLAN
(FOR INFORMATION ONLY)
JAMES L. ARMOUR, P.E.—CITY ENGINEER
CITY OF WICHITA PROJECT NO. 468-84012

Professional Engineering Consultants, P.A.
303 S. TOPKA • WICHITA, KANSAS 67202
316-262-2691 • FAX 316-262-3003

Designed by	BDB, BLB	Job No.	35-05258	Sh. 5 of 35
Drawn by	BJS	Date	February 2005	

RECORD DRAWING

DSNR: BLB OPER: BJS SCALE: 1"=100.00
C:\2005\05258\05258-C-4 Corner-3RD 06-16-2005 10:47:35 am