

FOUR CORNER PLAN FOR
AVALON PARK
 AN ADDITION TO WICHITA
 SEDGWICK COUNTY, KANSAS

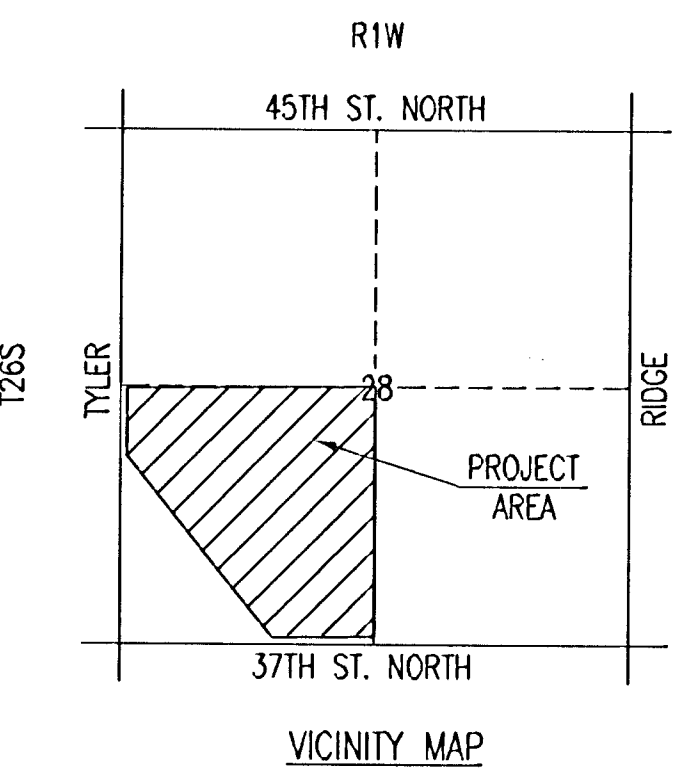
N.E. Corner SW 1/4, Sec. 28
 Twp. 26S, R-1-W
 Found 3/4" Rebar

SCALE: 1" = 100'
 • = 1/2" IRON PIPE W/PEC CAP UNLESS OTHERWISE NOTED

LEGEND

- (X) STD. BASEMENT
- (WO) WALK-OUT BASEMENT
- (VO) VIEW-OUT BASEMENT
- STORM WATER FLOW
- 15.00 SPOT ELEVATION
- W.O. WALK-OUT
- V.O. VIEW-OUT
- T.F. TOP OF FOUNDATION

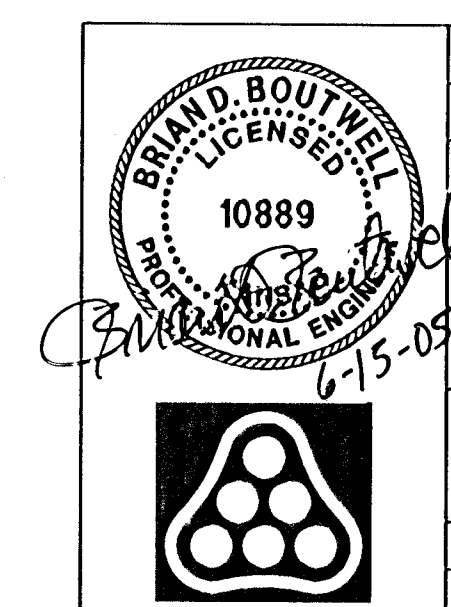
VO OR WO WAS CONSIDERED ACCEPTABLE
 IF THE TOP OF FOUNDATION WAS 5' OR
 LESS ABOVE THE FRONT PROPERTY LINE.



BLOCK	MINIMUM OPENINGS	ELEVATION (N.G.V.D.)	CITY DATUM
BLOCK 1	LOTS 1-6, 18-19	1336.0	148.6
	LOTS 36-37, 46-52	1349.6	149.6
	LOTS 7-17, 20-22, 33-35	1338.2	150.8
	LOTS 38-45	1338.3	150.9
	LOTS 23, 31-32	1339.0	151.6
BLOCK 2	LOTS 1-4, 10-13	1336.0	148.6
	LOTS 5-9	1336.2	148.8
BLOCK 3	LOTS 1-6	1336.0	148.6
	LOTS 7-18	1349.6	149.6
BLOCK 4	LOTS 4-9, 22-25	1336.0	148.6
	LOTS 1-3, 26-28	1336.8	149.4
	LOTS 10-21	1349.6	149.6

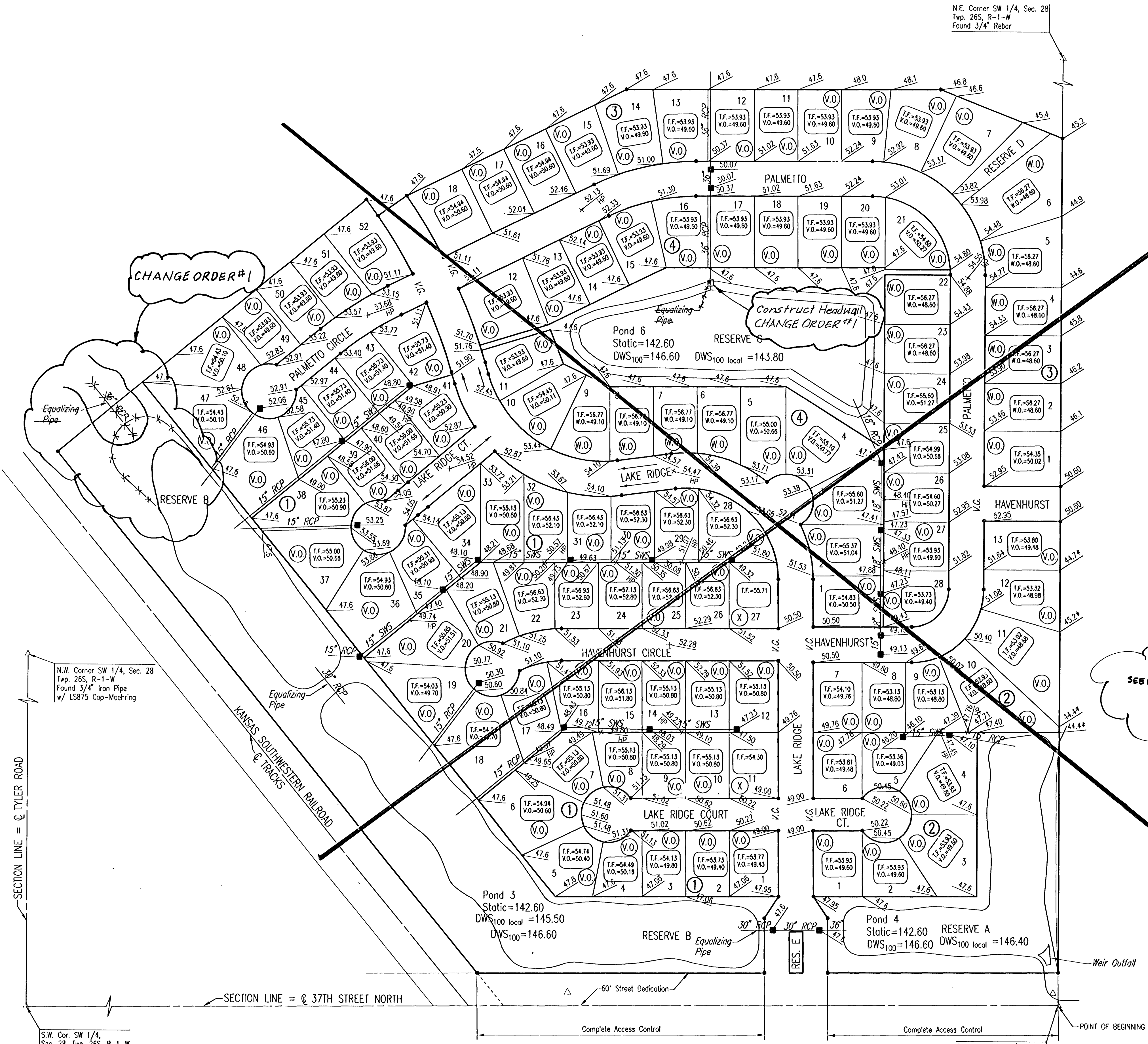
SEE REVISED 4-CORNER LOT GRADING PLAN NEXT SHEET
 REVISED 11 APRIL 2006

REVISED FEBRUARY 6, 2004



No.	Revision	By	Date
	AVALON PARK 3RD STORM WATER DRAIN NO. 265 4-CORNER LOT GRADING PLAN (FOR INFORMATION ONLY) JAMES L. ARMOUR, P.E.-CITY ENGINEER CITY OF WICHITA PROJECT NO. 468-84012		
Professional Engineering Consultants, P.A. 303 S. TOPEKA • WICHITA, KANSAS 67202 316-262-2691 • FAX 316-262-3003			
Designed by	BDB, BLB	Job No.	35-05258
Drawn by	BJS	Date	February 2005
			SH. 6 of 35

DSNR: BLB - OPER: BJS SCALE: 1"=100.00
 G:\2005\05258\05258-C-4CORNR-A.dwg 06-16-2005 10:46:35 am



N.W. Corner SW 1/4, Sec. 28
 Twp. 26S, R-1-W
 Found 3/4" Iron Pipe
 w/ LS875 Cap-Moehring

S.W. Cor. SW 1/4,
 Sec. 28, Twp. 26S, R-1-W
 Found 3/4" Pipe

S.E. Corner SW 1/4,
 Sec. 28, Twp. 26S, R-1-W
 Found 5/8" Rebar