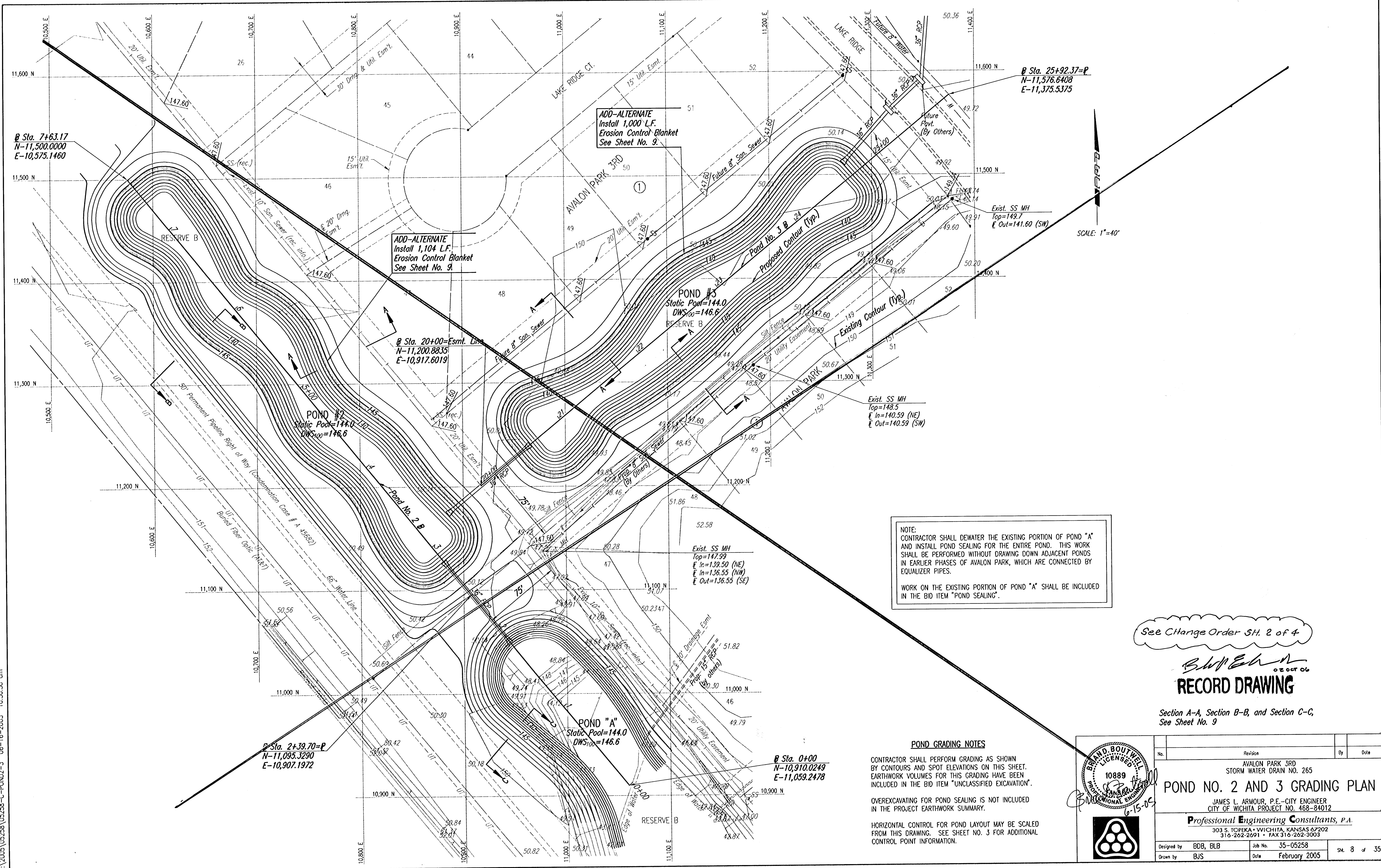


OSNR: BLB OPER: BJS SCALE: 1"=40.00
 C:\2005\05258\05258-C-POND2-3 06-16-2005 10:50:50 am



NOTE:
 CONTRACTOR SHALL DEWATER THE EXISTING PORTION OF POND "A" AND INSTALL POND SEALING FOR THE ENTIRE POND. THIS WORK SHALL BE PERFORMED WITHOUT DRAWING DOWN ADJACENT PONDS IN EARLIER PHASES OF AVALON PARK, WHICH ARE CONNECTED BY EQUALIZER PIPES.
 WORK ON THE EXISTING PORTION OF POND "A" SHALL BE INCLUDED IN THE BID ITEM "POND SEALING".

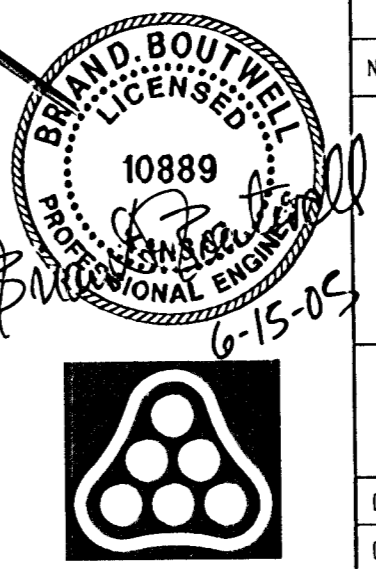
See Change Order SH. 2 of 4

RECORD DRAWING

Section A-A, Section B-B, and Section C-C, See Sheet No. 9

POND GRADING NOTES

CONTRACTOR SHALL PERFORM GRADING AS SHOWN BY CONTOURS AND SPOT ELEVATIONS ON THIS SHEET. EARTHWORK VOLUMES FOR THIS GRADING HAVE BEEN INCLUDED IN THE BID ITEM "UNCLASSIFIED EXCAVATION".
 OVEREXCAVATING FOR POND SEALING IS NOT INCLUDED IN THE PROJECT EARTHWORK SUMMARY.
 HORIZONTAL CONTROL FOR POND LAYOUT MAY BE SCALED FROM THIS DRAWING. SEE SHEET NO. 3 FOR ADDITIONAL CONTROL POINT INFORMATION.



Revision		By	Date
AVALON PARK 3RD STORM WATER DRAIN NO. 265 POND NO. 2 AND 3 GRADING PLAN JAMES L. ARMOUR, P.E.—CITY ENGINEER CITY OF WICHITA PROJECT NO. 468-84012 Professional Engineering Consultants, P.A. 303 S. TOPEKA • WICHITA, KANSAS 67202 316-262-2691 • FAX 316-262-3003			
Designed by	BDB, BLB	Job No.	35-05258
Drawn by	BJS	Date	February 2005
			SH. 8 of 35