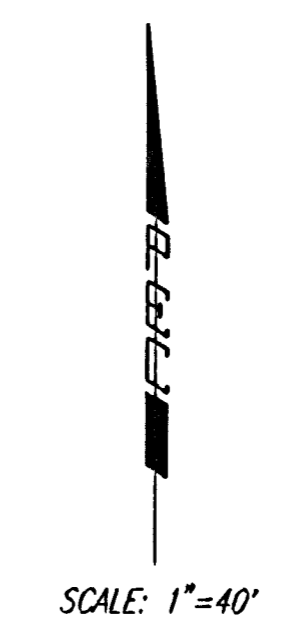
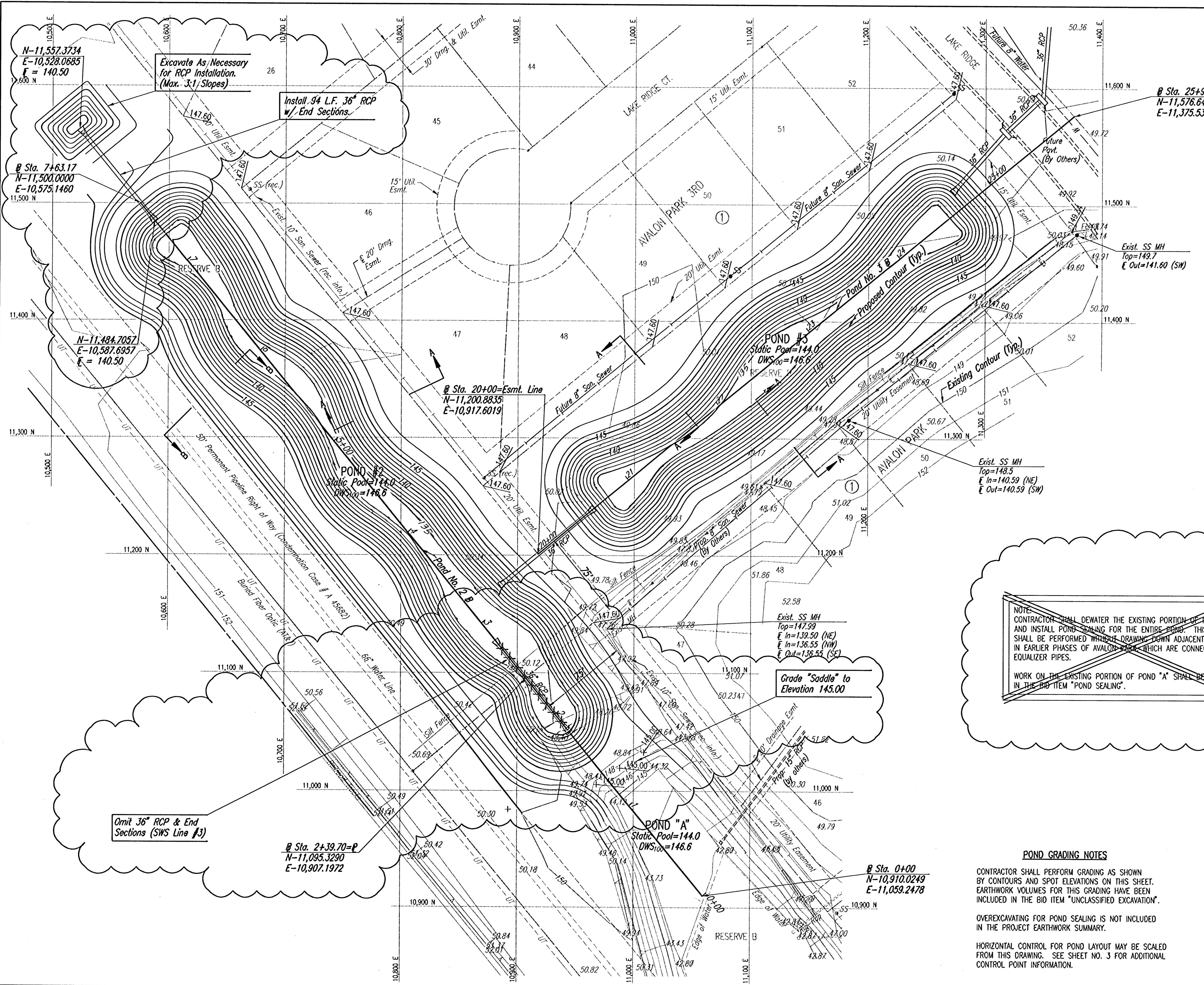


Saved: 02-17-2006 5:59:24 PM by BJS  
 Plot: Scale: 1:40 02-21-2006 2:18:40 PM by JLS  
 C:\2005\025258\Change Order\025258-C-0002-3-Change Order



NOTE:  
 CONTRACTOR SHALL DEWATER THE EXISTING PORTION OF POND "A" AND INSTALL POND SEALING FOR THE ENTIRE POND. THIS WORK SHALL BE PERFORMED WITHOUT DRAINING DOWN ADJACENT PONDS IN EARLIER PHASES OF AVALON PARK, WHICH ARE CONNECTED BY EQUALIZER PIPES.  
 WORK ON THE EXISTING PORTION OF POND "A" SHALL BE INCLUDED IN THE BID ITEM "POND SEALING".

*B. J. S.*  
 02 OCT 06  
**RECORD DRAWING**

Section A-A, Section B-B, and Section C-C,  
 See Sheet No. 9

**POND GRADING NOTES**

CONTRACTOR SHALL PERFORM GRADING AS SHOWN BY CONTOURS AND SPOT ELEVATIONS ON THIS SHEET. EARTHWORK VOLUMES FOR THIS GRADING HAVE BEEN INCLUDED IN THE BID ITEM "UNCLASSIFIED EXCAVATION".  
 OVEREXCAVATING FOR POND SEALING IS NOT INCLUDED IN THE PROJECT EARTHWORK SUMMARY.  
 HORIZONTAL CONTROL FOR POND LAYOUT MAY BE SCALED FROM THIS DRAWING. SEE SHEET NO. 3 FOR ADDITIONAL CONTROL POINT INFORMATION.



1	Rev. Pond #2 limits (S. end), relocate 36" RCP	9/28/05
No.	Revision	By Date
AVALON PARK 3RD STORM WATER DRAIN NO. 265 <b>POND NO. 2 AND 3 GRADING PLAN</b> JAMES L. ARMOUR, P.E.—CITY ENGINEER CITY OF WICHITA PROJECT NO. 468-84012 <b>Professional Engineering Consultants, P.A.</b> 303 S. TOPEKA • WICHITA, KANSAS 67202 316-262-2691 • FAX 316-262-3003		
Designed by	BDB, BLB	Job No. 35-05258
Drawn by	BJS	Date February 2005
		SH. 8R of 35