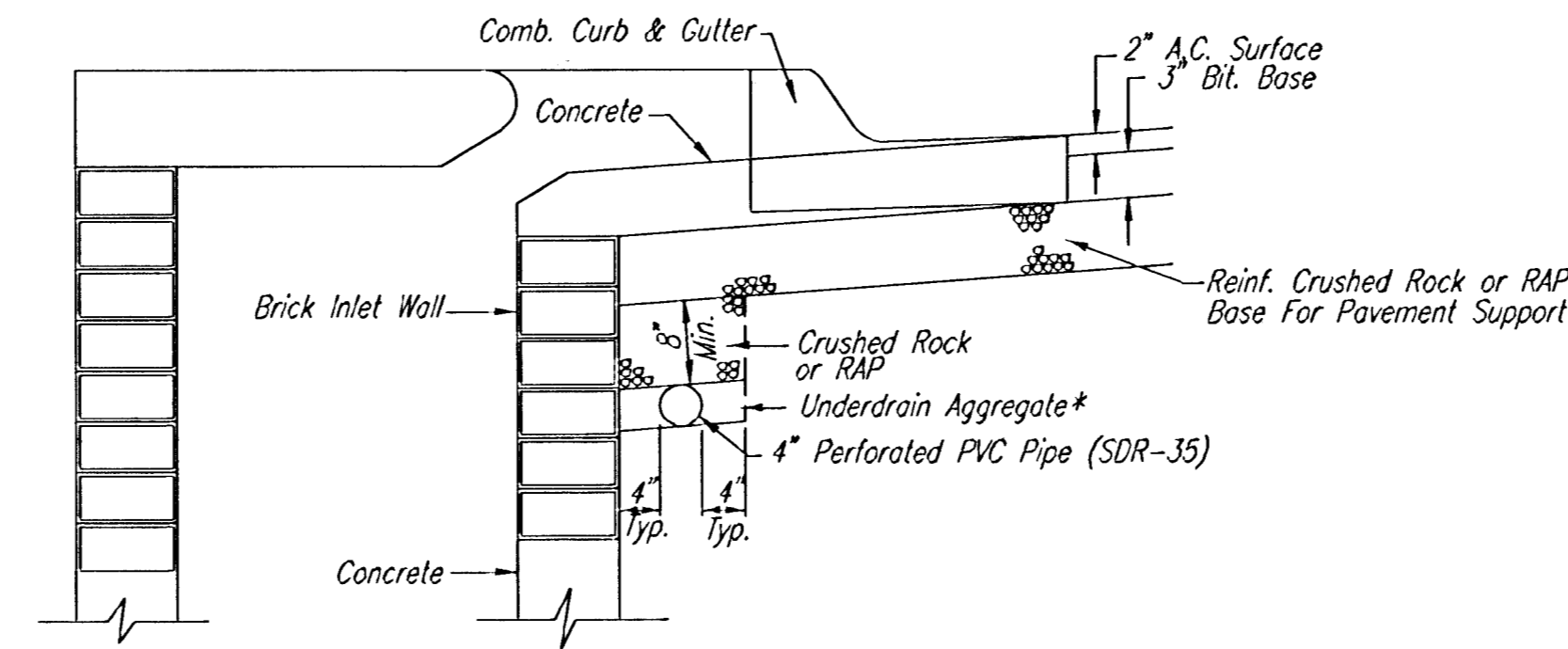
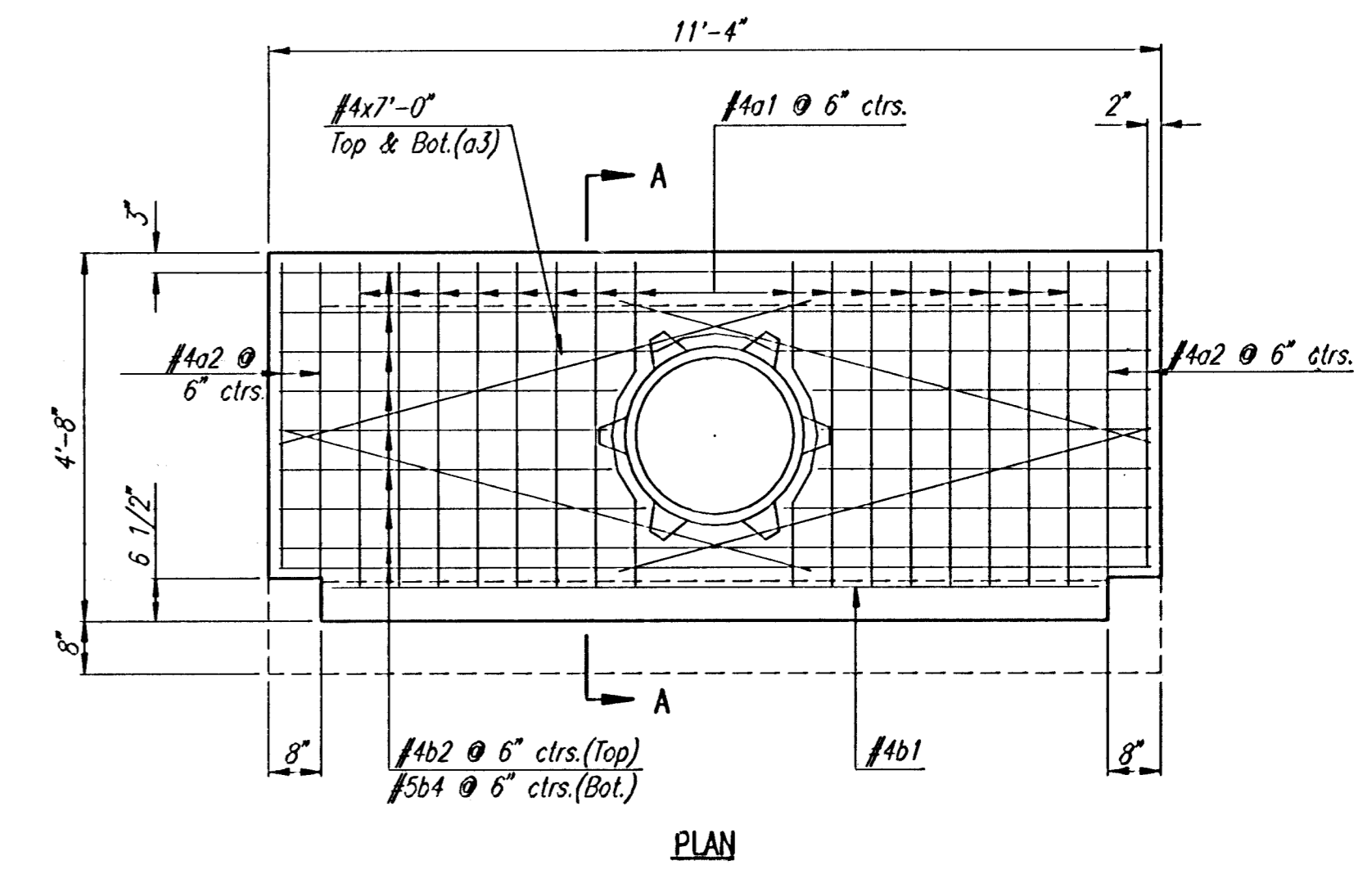


* UNDERDRAIN AGGREGATE
PERCENT OF AGGREGATE RETAINED

1"	0
3/4"	0-10
3/8"	45-80
#4	90-100
#8	95-100

ROCK QUALITY SHALL CONFORM TO THE REQUIREMENTS SPECIFIED BY THE KDOT 1990 EDITION STANDARD SPECIFICATION SUBSECTION 1102 FOR DURABILITY CLASS I.

PAVEMENT UNDERDRAIN LOCATIONS		
STREET	STATION	SIDE
LAKE RIDGE	30+58.00	LT. & RT.



Min. 16 Perforations Per Lin. Ft. @ 1/4" Dia.
Perforations To Be on Bottom Half

SECTION A-A

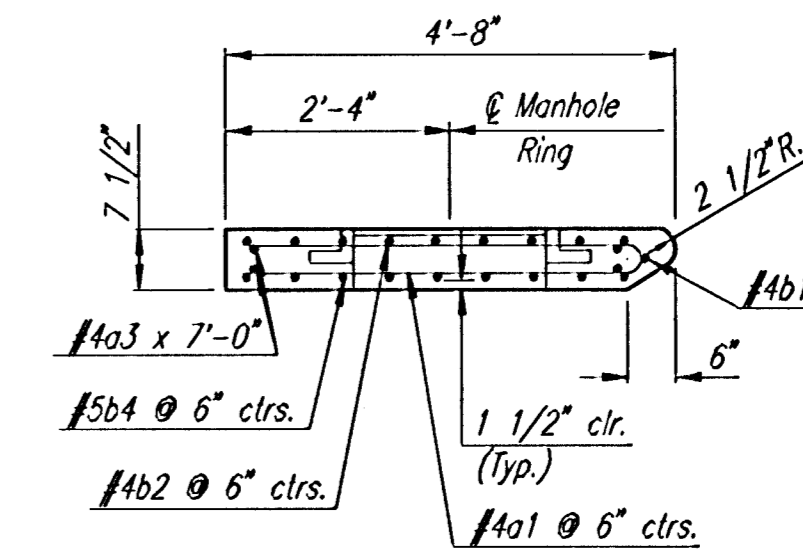
PAVEMENT UNDERDRAIN DETAIL

NOTE: PLACE 4" PVC PERFORATED PIPE AT ALL DRAINAGE SUMP LOCATIONS.

COST OF UNDERDRAIN SYSTEM TO BE INCIDENTAL TO THE REINFORCED CRUSHED ROCK OR REINFORCED RECYCLED ASPHALT PAVEMENT (RAP) BASE.

INLET TYPE MAY VARY FROM THAT SHOWN.

NOTE: SWS CONTRACTOR SHALL INSTALL SDR 35, 4" DRAIN PIPE STUB ONLY THROUGH WALL OF THIS CURB INLET AND CAP TO ALLOW FUTURE CONNECTION OF TEE AND ADDITIONAL DRAIN PIPE BY OTHERS.



SECTION A-A

SPECIAL TYPE 1A INLET TOP DETAILS

Inlet Sta. 30+58.00 SWS Line No. 1

See Sheet No. 14 for Cast Iron Inlet Ring Details

B. J. S.
02 OCT 06
RECORD DRAWING

DSNR: BLB OPER: BJS SCALE: 1=10.00
C:\2005\05258\05258-C-MISC DRAINAGE DETAILS 06-16-2005 10:55:33 am

	Revision	By	Date
	AVALON PARK SRD STORM WATER DRAIN NO. 265 MISCELLANEOUS DRAINAGE DETAILS JAMES L. ARMOUR, P.E.—CITY ENGINEER CITY OF WICHITA PROJECT NO. 468-84012 Professional Engineering Consultants, P.A. 303 S. TOPEKA • WICHITA, KANSAS 67202 316-262-2691 • FAX 316-262-3003		
Designed by	BDB, BLB	Job No.	35-05258
Drawn by	BJS	Date	February 2005
			SH. 15 of 35