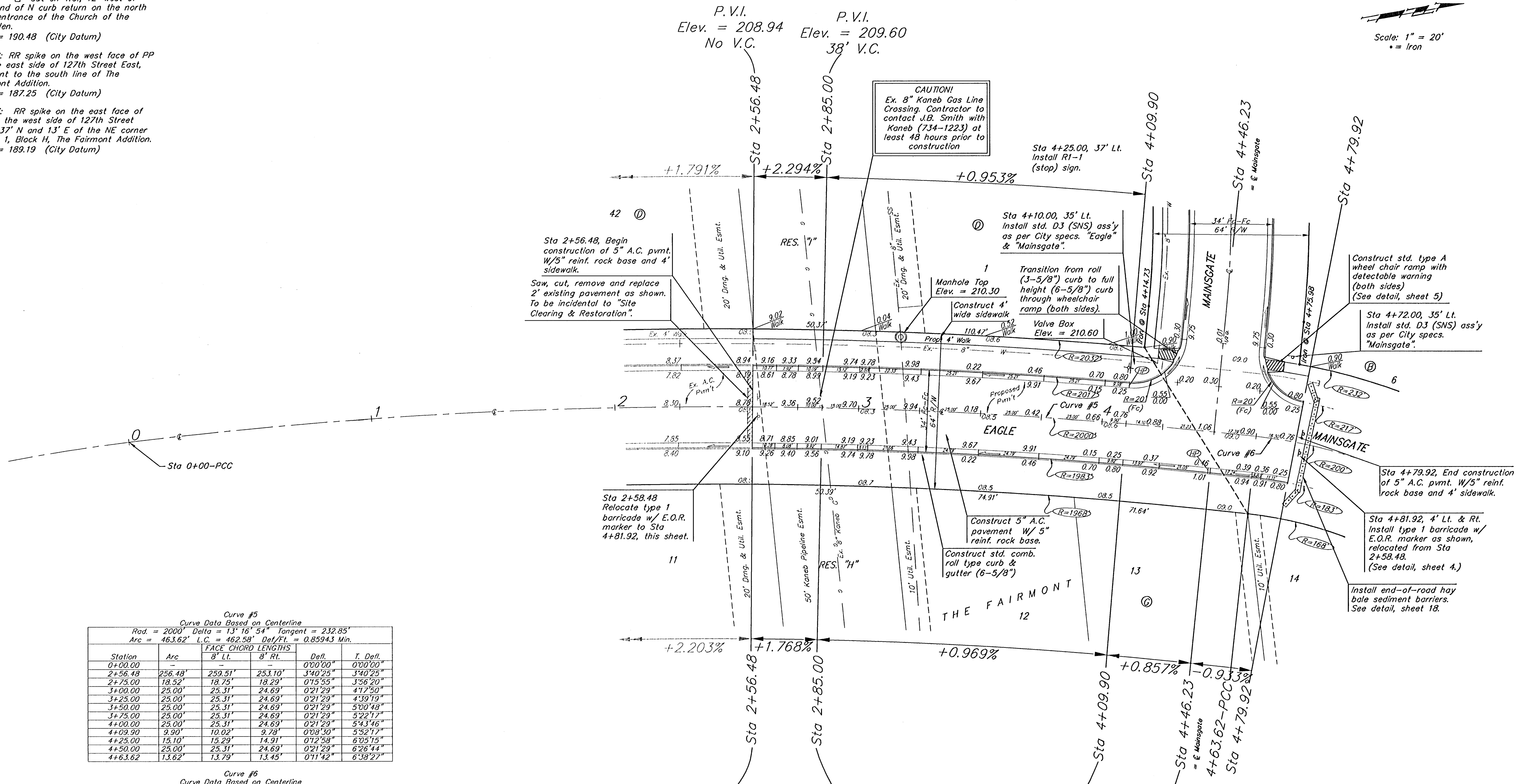
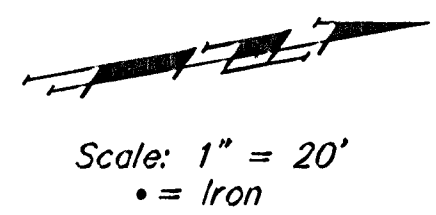


**BENCHMARKS:**

BM #1: "□" Cut on T.C., 12' west of east end of N curb return on the north drive entrance of the Church of the Magdalen.  
Elev. = 190.48 (City Datum)

BM #2: RR spike on the west face of PP on the east side of 127th Street East, adjacent to the south line of the Fairmont Addition.  
Elev. = 187.25 (City Datum)

BM #3: RR spike on the east face of PP on the west side of 127th Street East, 37' N and 13' E of the NE corner of Lot 1, Block H, The Fairmont Addition.  
Elev. = 189.19 (City Datum)



Curve #5  
Curve Data Based on Centerline  
Rad. = 2000' Delta = 13° 16' 54" Tangent = 232.85'  
Arc = 463.62' L.C. = 462.58' Def/Fl. = 0.85943 Min.

Station	Arc	FACE CHORD LENGTHS		Defl.	T. Defl.
		8' Lt.	8' Rt.		
0+00.00	-	-	-	0°00'00"	0°00'00"
2+56.48	256.48'	259.51'	253.10'	3°40'25"	3°40'25"
2+75.00	18.52'	18.75'	18.29'	0°15'55"	3°56'20"
3+00.00	25.00'	25.31'	24.69'	0°21'29"	4°17'50"
3+25.00	25.00'	25.31'	24.69'	0°21'29"	4°39'19"
3+50.00	25.00'	25.31'	24.69'	0°21'29"	5°00'48"
3+75.00	25.00'	25.31'	24.69'	0°21'29"	5°22'17"
4+00.00	25.00'	25.31'	24.69'	0°21'29"	5°43'46"
4+09.90	9.90'	10.02'	9.78'	0°08'30"	5°52'17"
4+25.00	15.10'	15.29'	14.91'	0°12'58"	6°05'15"
4+50.00	25.00'	25.31'	24.69'	0°21'29"	6°26'44"
4+63.62	13.62'	13.79'	13.45'	0°11'42"	6°38'27"

Curve #6  
Curve Data Based on Centerline  
Rad. = 200' Delta = 72° 42' 24" Tangent = 147.43'  
Arc = 254.08' L.C. = 237.34' Def/Fl. = 8.59454 Min.

Station	Arc	FACE CHORD LENGTHS		Defl.	T. Defl.
		8' Lt.	8' Rt.		
4+63.62	-	-	-	0°00'00"	0°00'00"
4+79.92	16.30'	18.33'	14.26'	2°20'05"	2°20'05"
7+17.70	237.78'	252.03'	196.02'	34°03'36"	36°23'42"

		THE FAIRMONT - PHASE III	
		EAGLE	
Baughman		STA 2+56.48 TO STA 4+79.92	
<small>Baughman Company, P.A. 315 E. St. W. Minn. 55411 P.3162627111 F.3162627119</small> <small>ENGINEERING   SURVEYING   PLANNING   LANDSCAPE ARCHITECTURE</small>			
PROJECT NUMBER 472-83483	DESIGN ATD	DRAWN TMS	
REVISIONS	APPROVED	DATE 09/05	
	SCALE Noted	SHEET	
	<b>10 OF 27</b>		
FairmontPhaseIIISet1		0404E871	