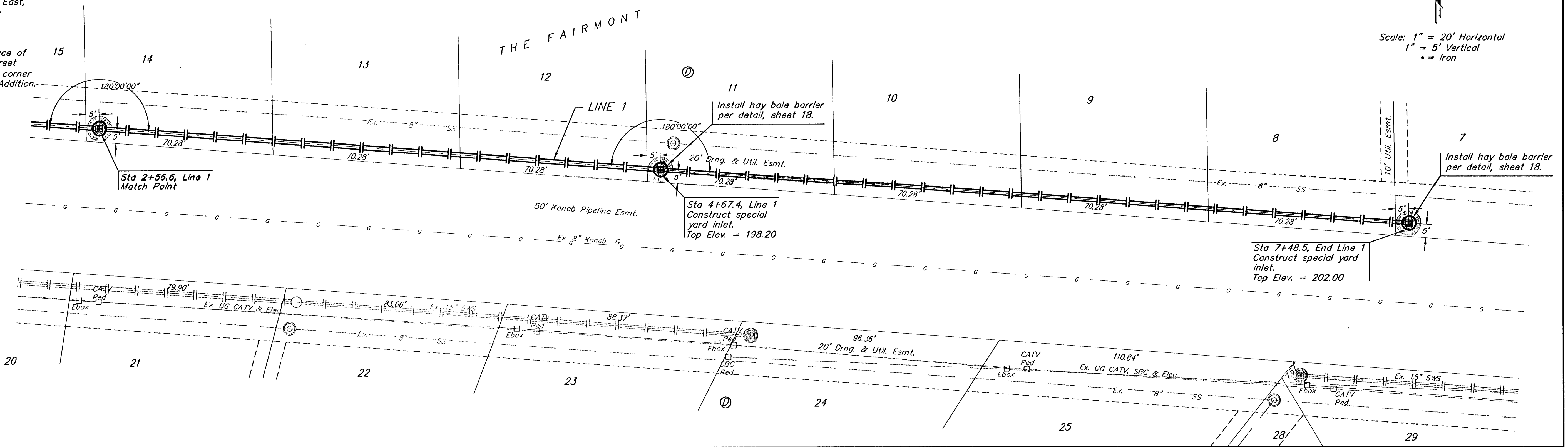
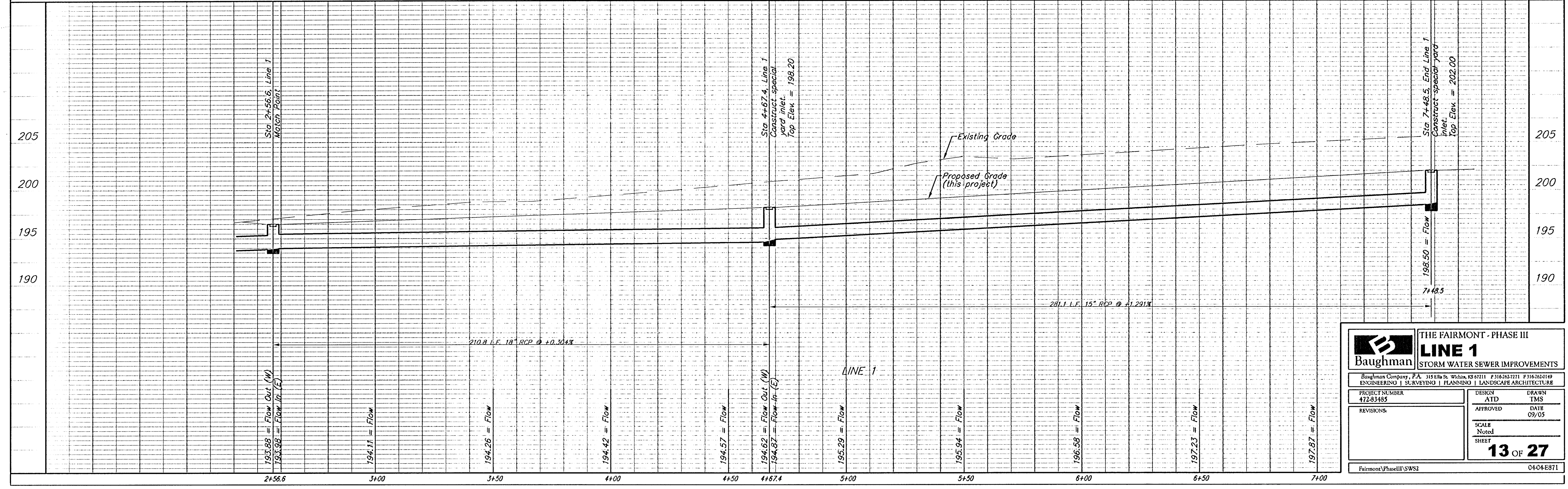


BENCHMARKS:
 BM #1: "□" Cut on T.C., 12' west of east end of N curb return on the north drive entrance of the Church of the Magdalen.
 Elev. = 190.48 (City Datum)
 BM #2: RR spike on the west face of PP on the east side of 127th Street East, adjacent to the south line of The Fairmont Addition.
 Elev. = 187.25 (City Datum)
 BM #3: RR spike on the east face of PP on the west side of 127th Street East, 37' N and 13' E of the NE corner of Lot 1, Block H, The Fairmont Addition.
 Elev. = 189.19 (City Datum)



Scale: 1" = 20' Horizontal
 1" = 5' Vertical
 • = Iron



		THE FAIRMONT - PHASE III	
		LINE 1	
STORM WATER SEWER IMPROVEMENTS			
<small>Baughman Company, P.A. 315 E. 8th St., P.O. Box 83 67111 F316232019 ENGINEERING SURVEYING PLANNING LANDSCAPE ARCHITECTURE</small>			
PROJECT NUMBER 47283483	DESIGN ATD	DRAWN TMS	
REVISIONS	APPROVED	DATE 09/05	
	SCALE Noted	SHEET 13 OF 27	
Fairmont Phase III SWS2		04-04-E871	