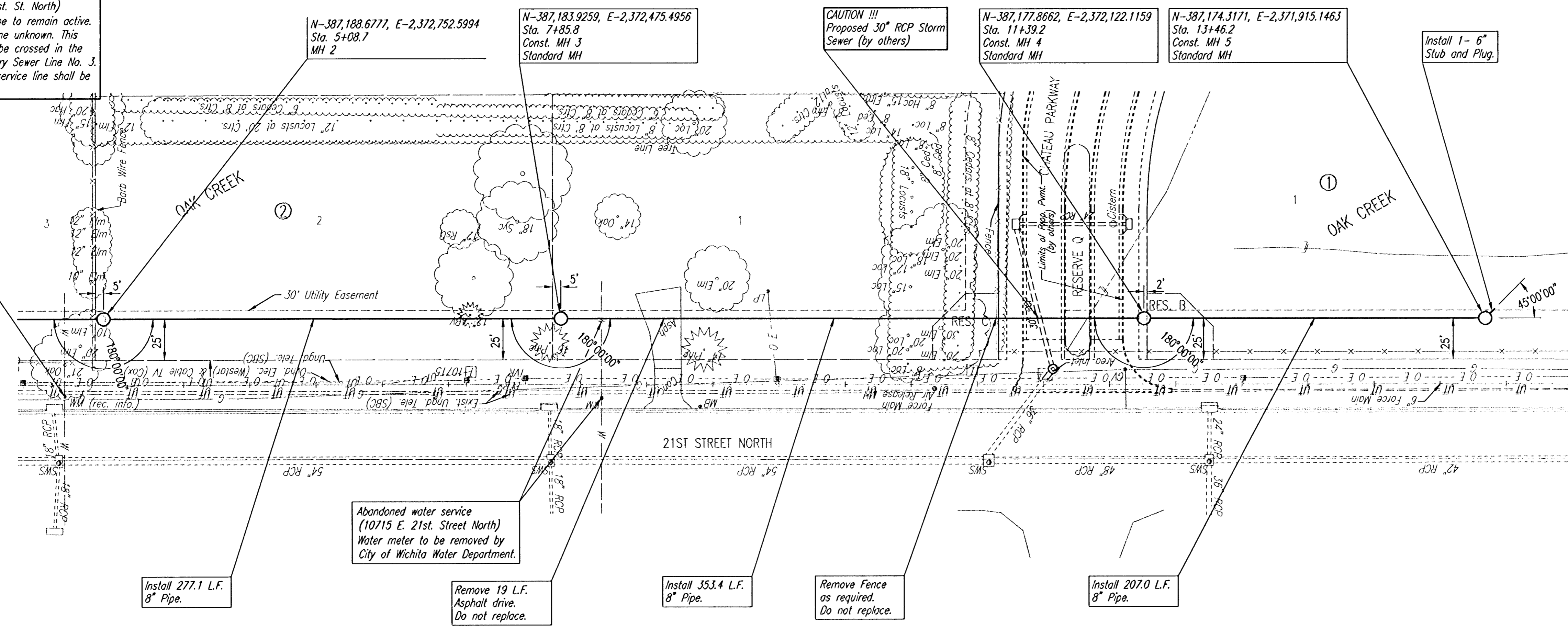
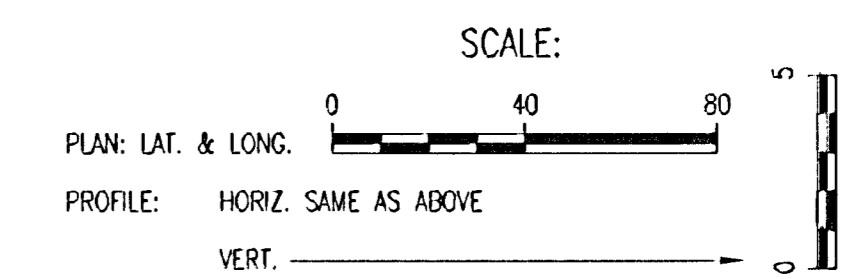
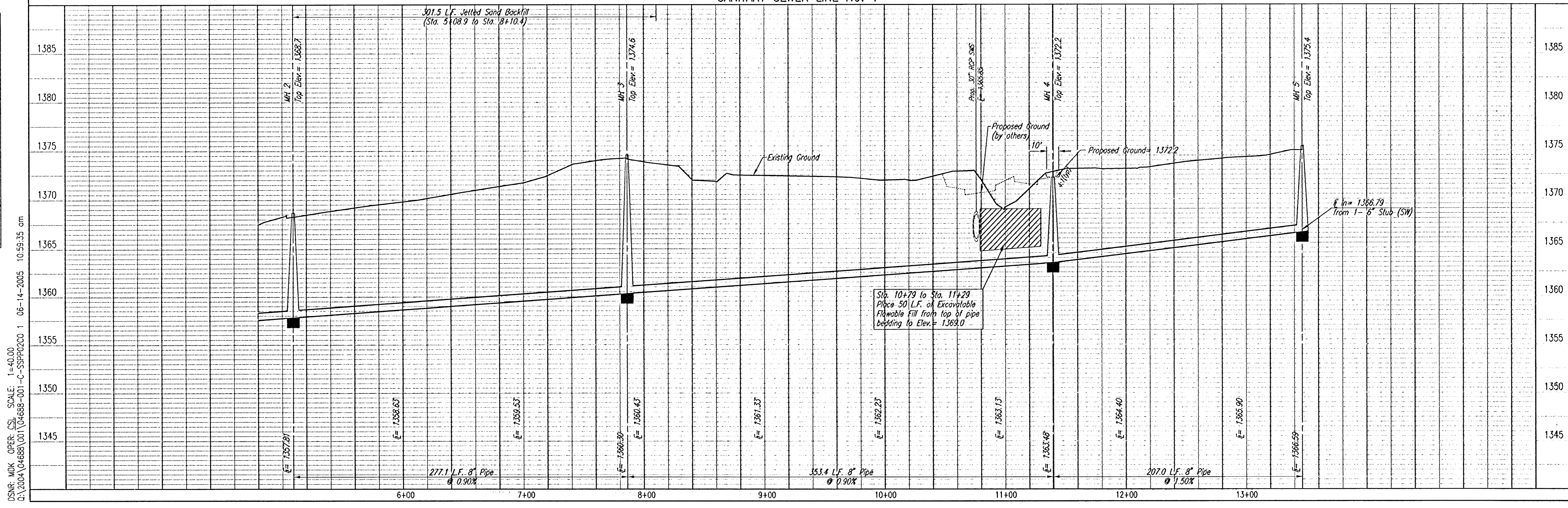


PLAN	CHECKED	CHECKED
BY		
DATE		

CAUTION !!
 Approximate location of existing City of Wichita water meter, (10801 E. 21st. St. North). Existing 1" water service line to remain active. Location of water service line unknown. This water service line will also be crossed in the vicinity of MH 11 on Sanitary Sewer Line No. 3. Any damage to the water service line shall be repaired by the contractor.



PROFILE	CHECKED	CHECKED
BY		
DATE		



SEE SHEET NO. 3 & 4 FOR PLAT COORDINATES



1	CHANGE ORDER #1 - SANITARY SEWER ALIGNMENT CHANGE	MDK	06/14/05
	Revision	By	Date

DSMR: MDK OPER. CSL SCALE: 1"=40.00
 Q:\2004\04688\001\04688-001-C-SPP0200 1 06-14-2005 10:59:35 am

LATERAL 1, MAIN 16
 OF THE FOUR MILE CREEK SEWER
SANITARY SEWER LINE NO. 1
 JAMES L. ARMOUR, P.E. - ACTING CITY ENGINEER
 CITY OF WICHITA PROJECT NO. 488-83984

Professional Engineering Consultants, P.A.
 303 S. TOPEKA • WICHITA, KANSAS 67202
 316-262-2691 • FAX 316-262-3003

Designed By: MDK
 Drawn By: TLB
 Job No. 35-04688-001
 Date: January 2005