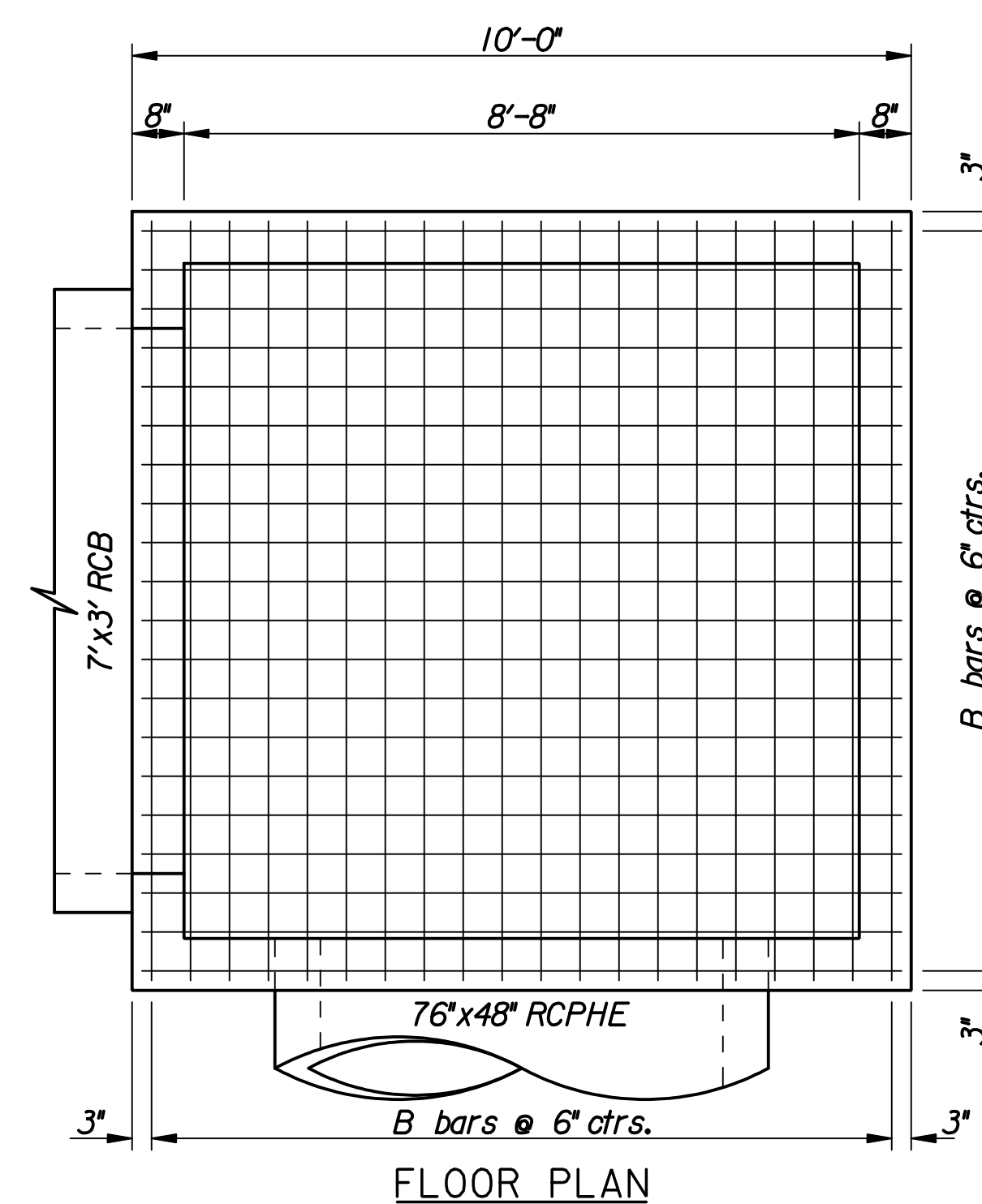
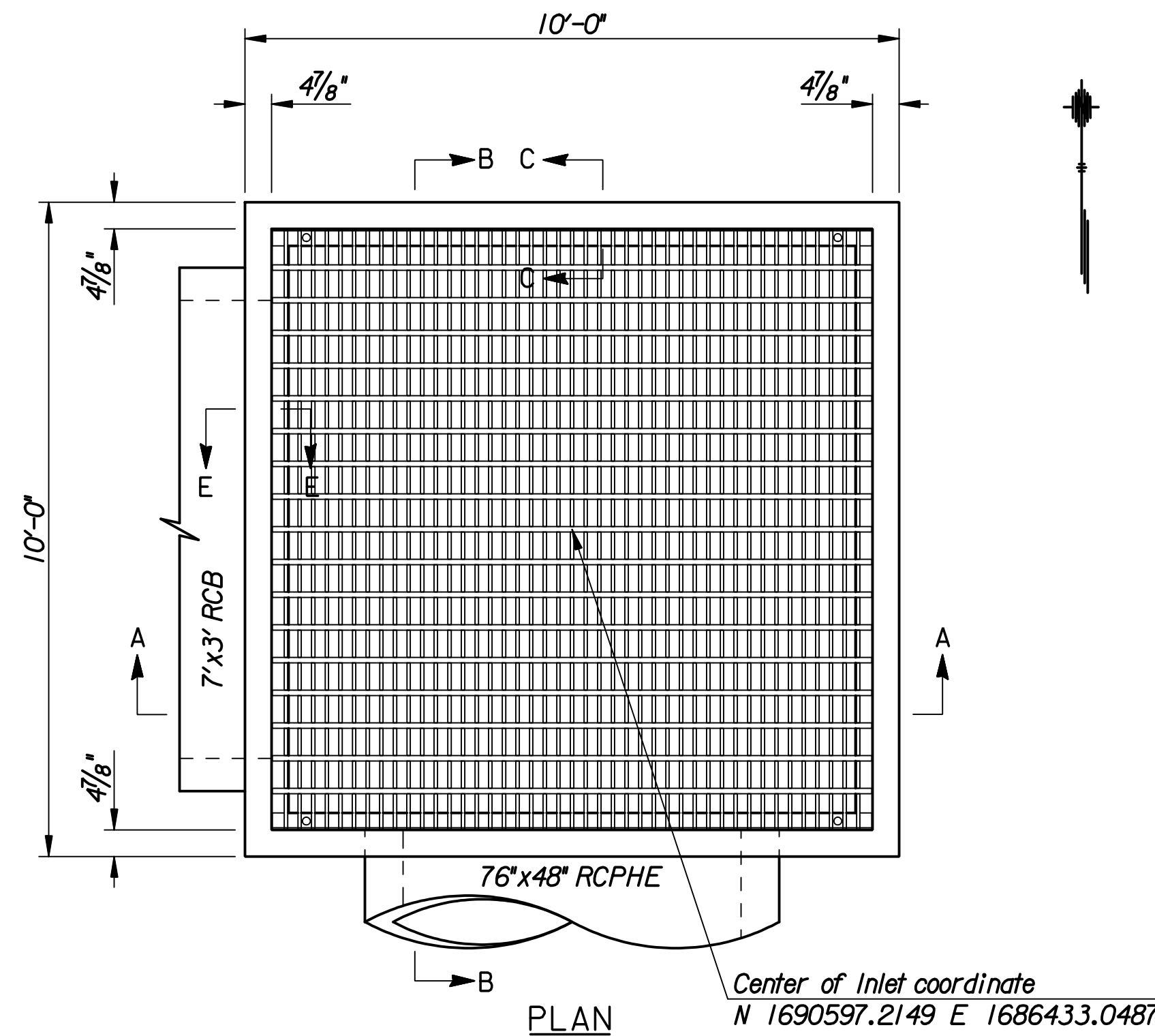
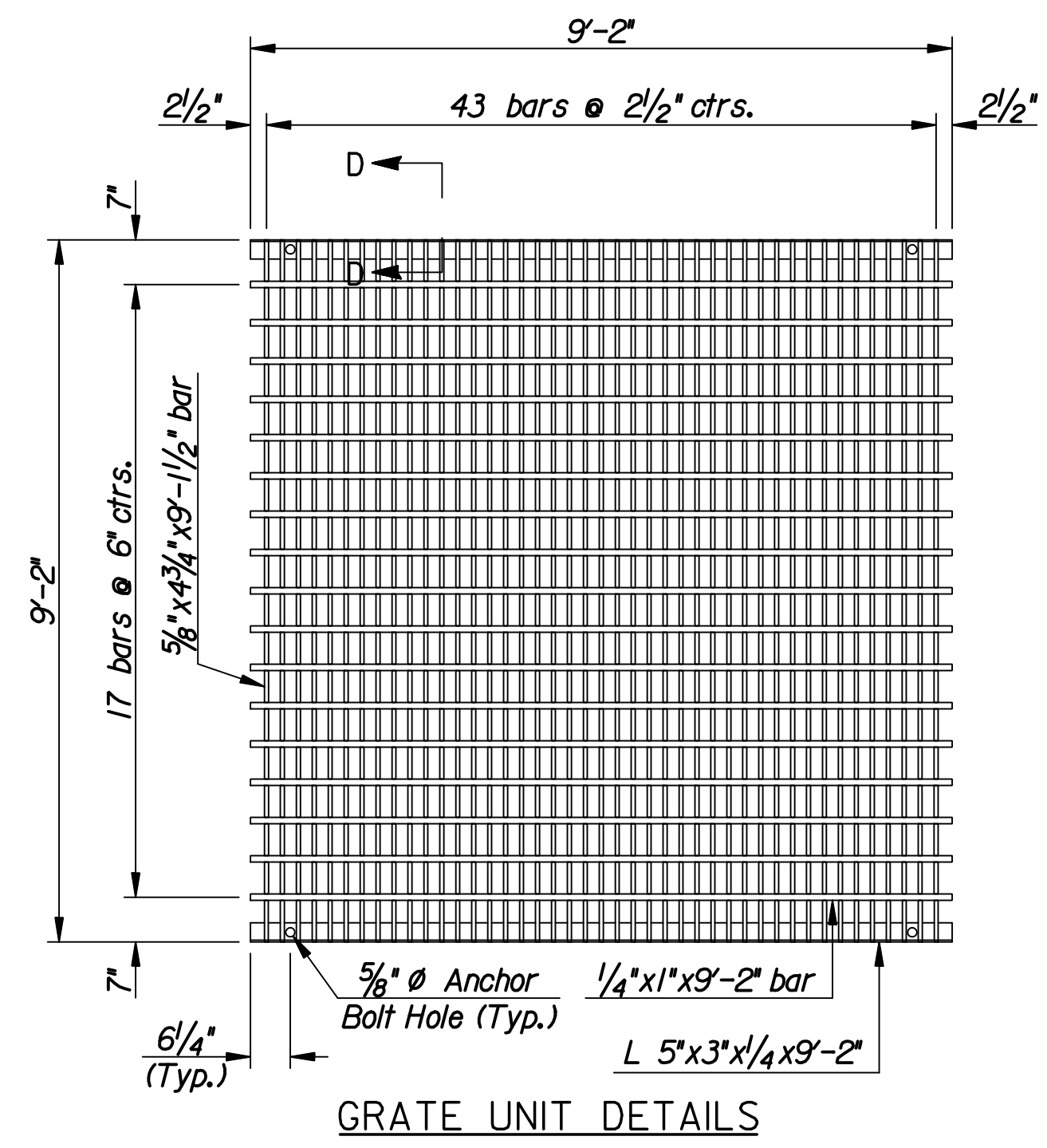
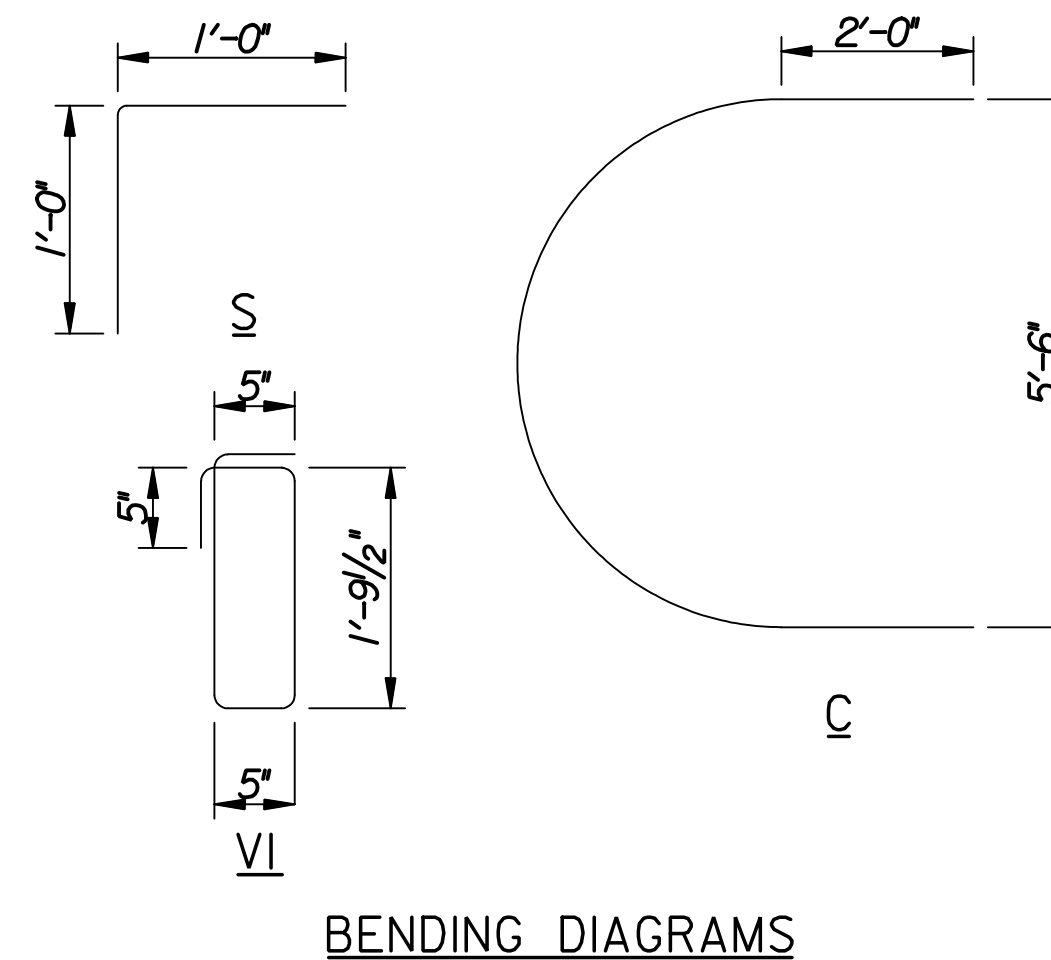
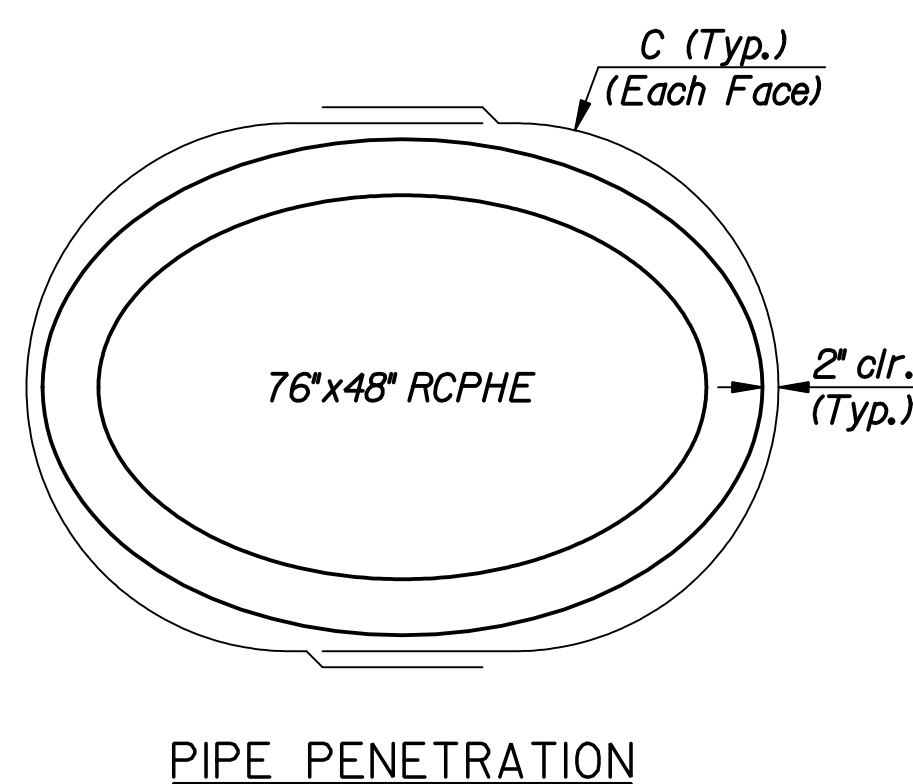
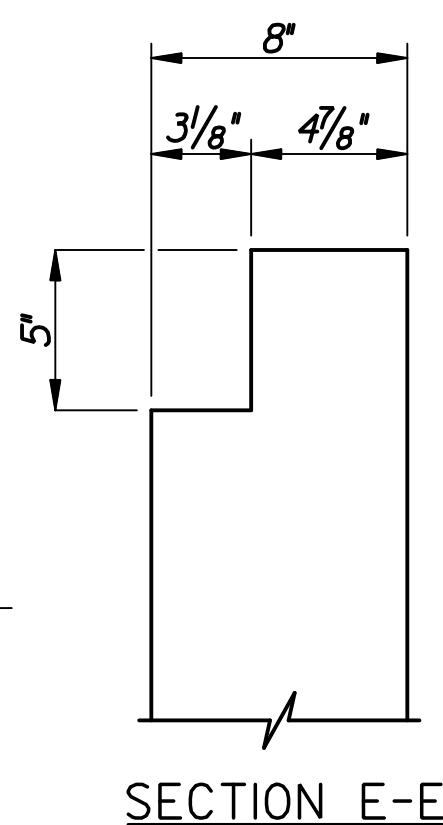
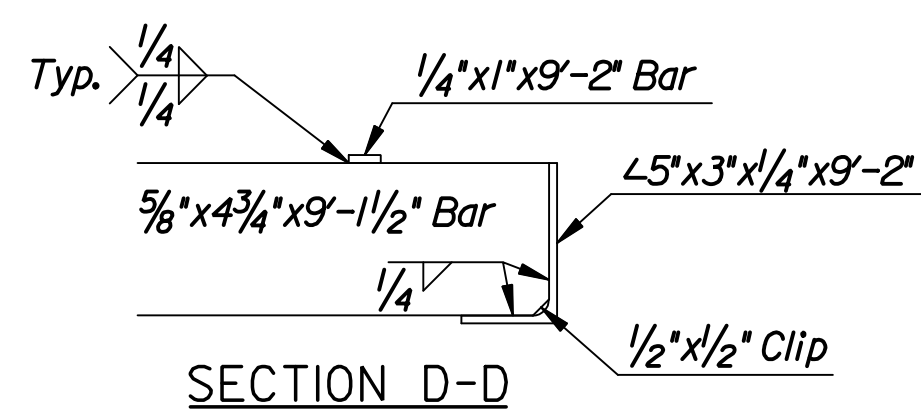
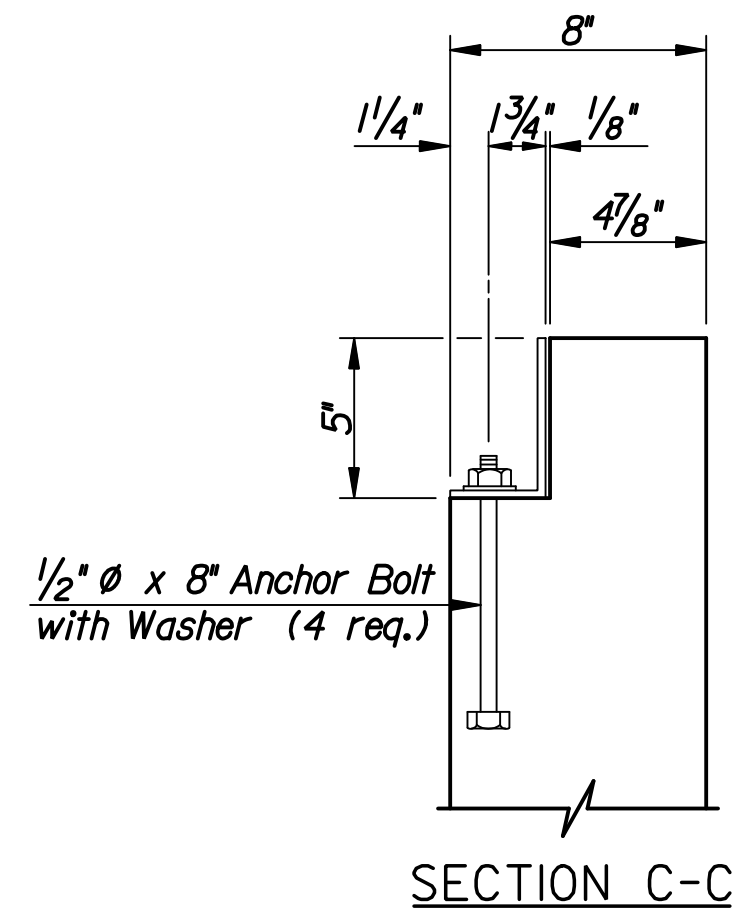
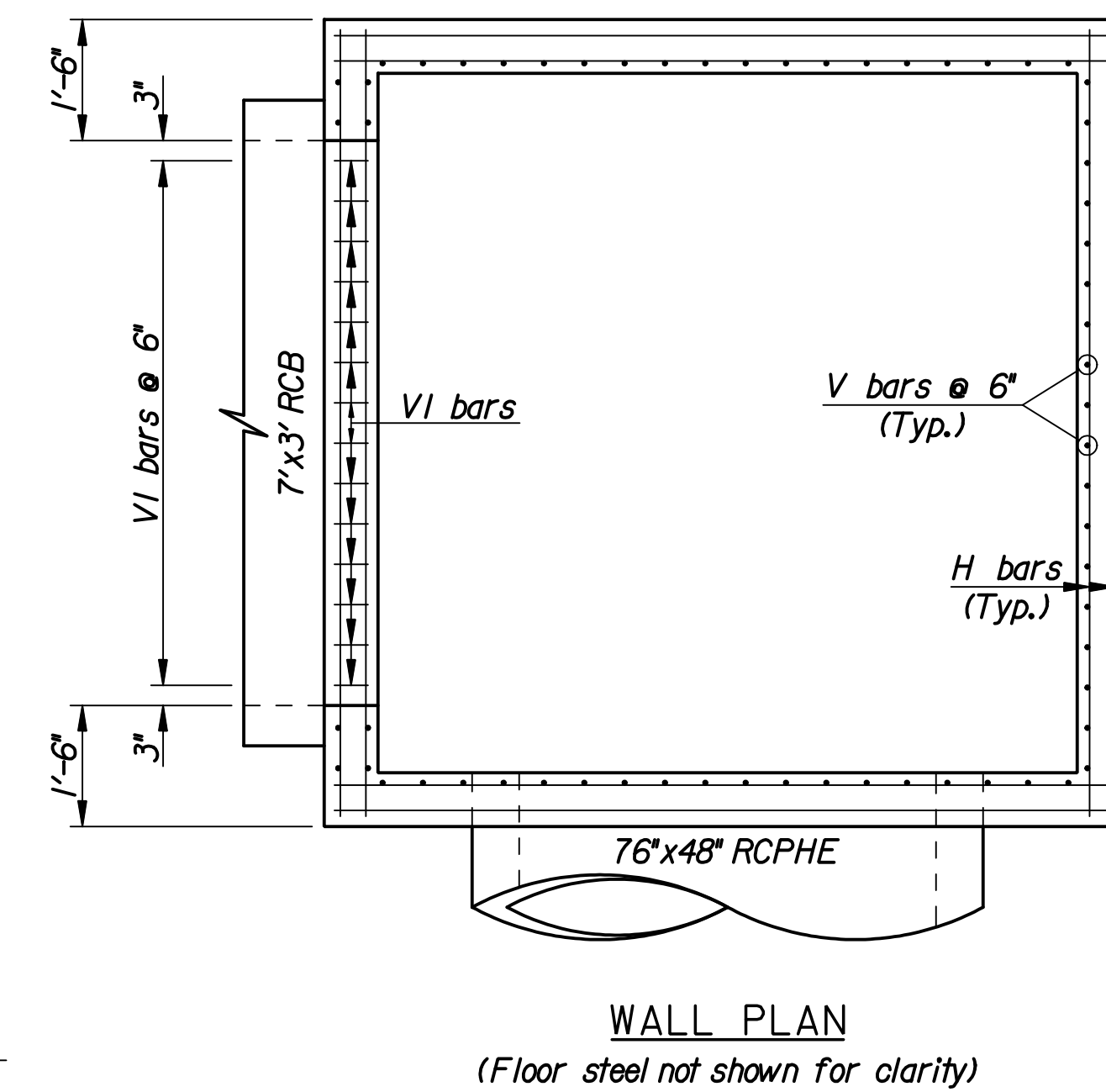
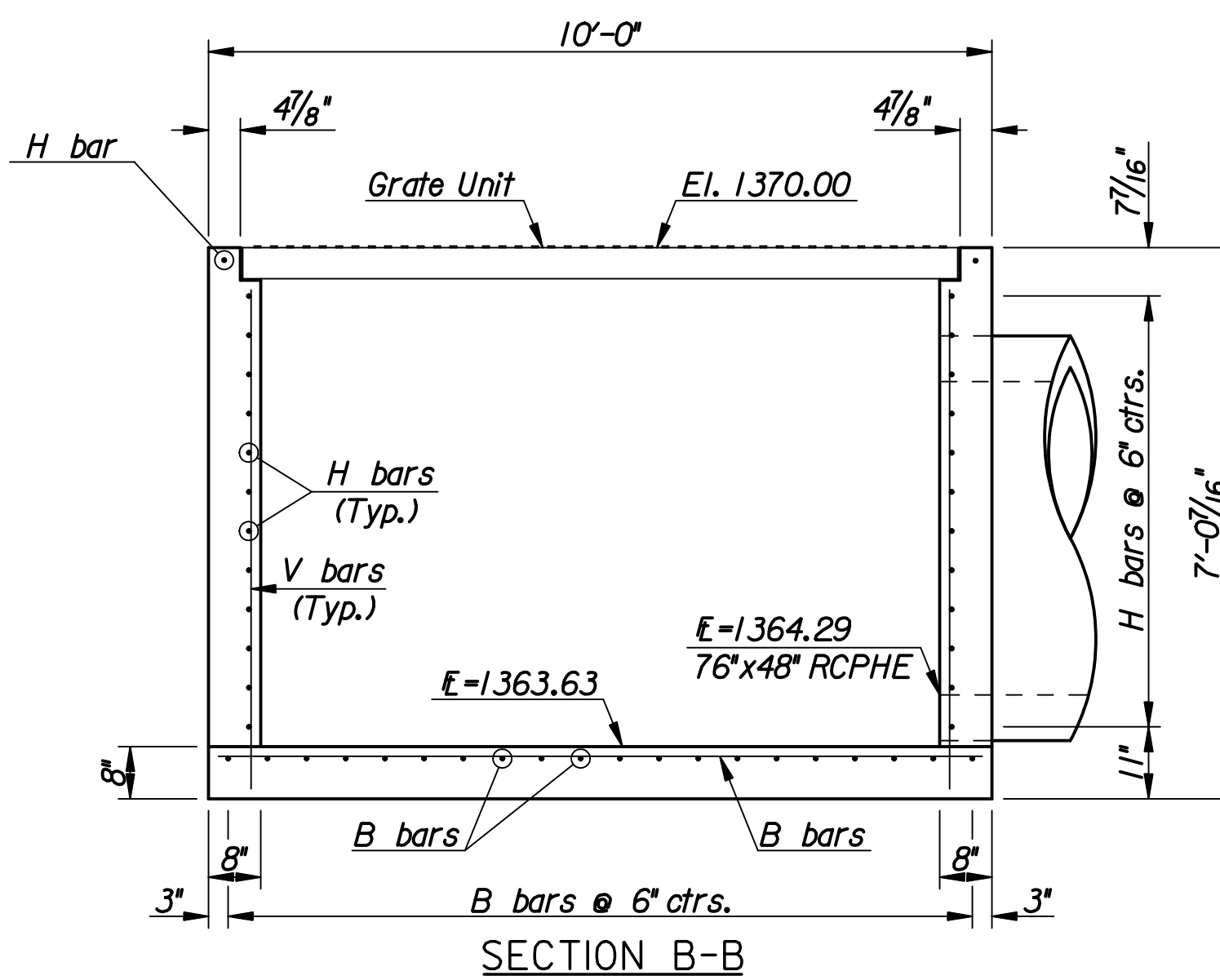
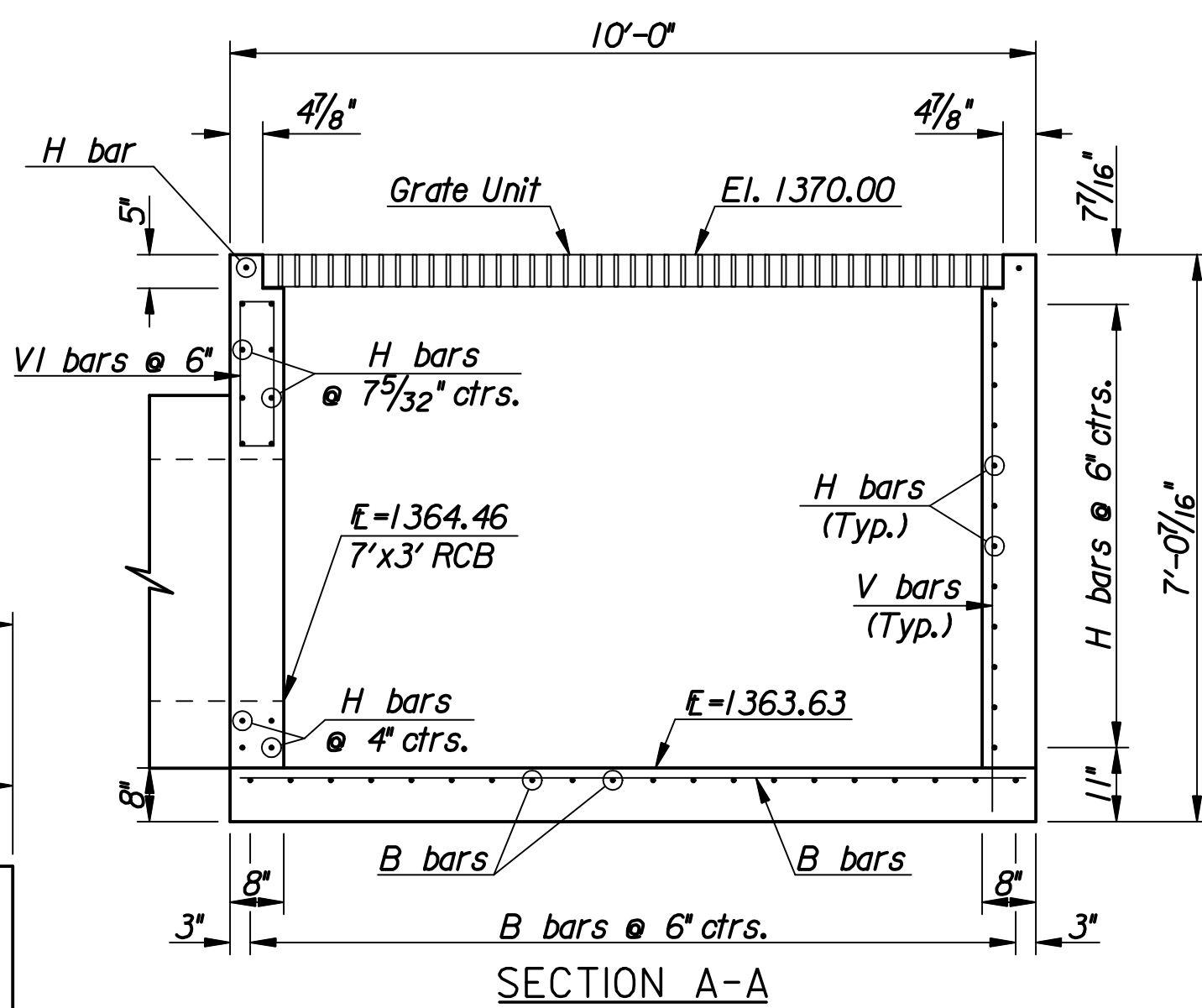


DSNR: MSN OPER: DRP SCALE: I:/2006/06471/ROB/06471-AREAINLETSPEC.DGN LAST REV: 6-1-2007 BY: svb



BILL OF MATERIALS FOR AREA INLET			
Bar	No.	Size	Length
H	52	#4	9'-8"
V	62	#4	6'-4"
VI	14	#3	3'-1"
B	40	#5	9'-8"
C	4	#5	12'-7 1/2"
S	52	#4	2'-0"
Concrete			6.92 Cu. Yds.
Reinf. steel			1140 Lbs.
Struct. steel			4214 Lbs.

\* Lap S bars to adjacent H bars.



**GENERAL NOTE**

Concrete shall be air-entrained and have a 28-day compressive strength of 4,000 p.s.i. All exposed edges shall be finished with an edging tool.

In general, pipes will enter and leave the manhole at various positions. Where possible bend bars around pipes. Field cut rebars where required.

Deductions in concrete quantities shall be made for pipe openings.

All bars are #4 @ 6" spacing, unless otherwise noted, and shall have a minimum clearance of 1 1/2" unless otherwise noted on the plans.

All exposed structural steel shall be painted with a coat of inorganic zinc primer and then with a topcoat or a field coat of organic zinc, each coat to be 3 to 4 mils. Structural steel used to fabricate the grate shall comply with ASTM A36.

Flush cut pipe at inside face of area inlet.

Seal Course to be similar to Precast R.C.B. requirements.

No.	Revision	By	Date
GREENWICH ROAD			
<b>AREA INLET (SPECIAL)</b>			
JAMES L. ARMOUR, P.E. - CITY ENGINEER CITY OF WICHITA PROJECT NO. 472-34435			
<b>Professional Engineering Consultants, P.A.</b> 303 S. TOPEKA • WICHITA, KANSAS 67202 316-262-2691 • FAX 316-262-3003			
Designed by	MSN	Job No.	06471
Drawn by	DRP	Date	June, 2007
			Sht. 37 of 97