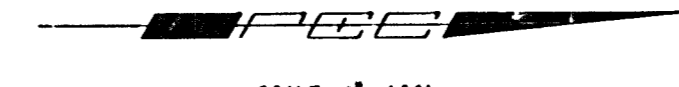


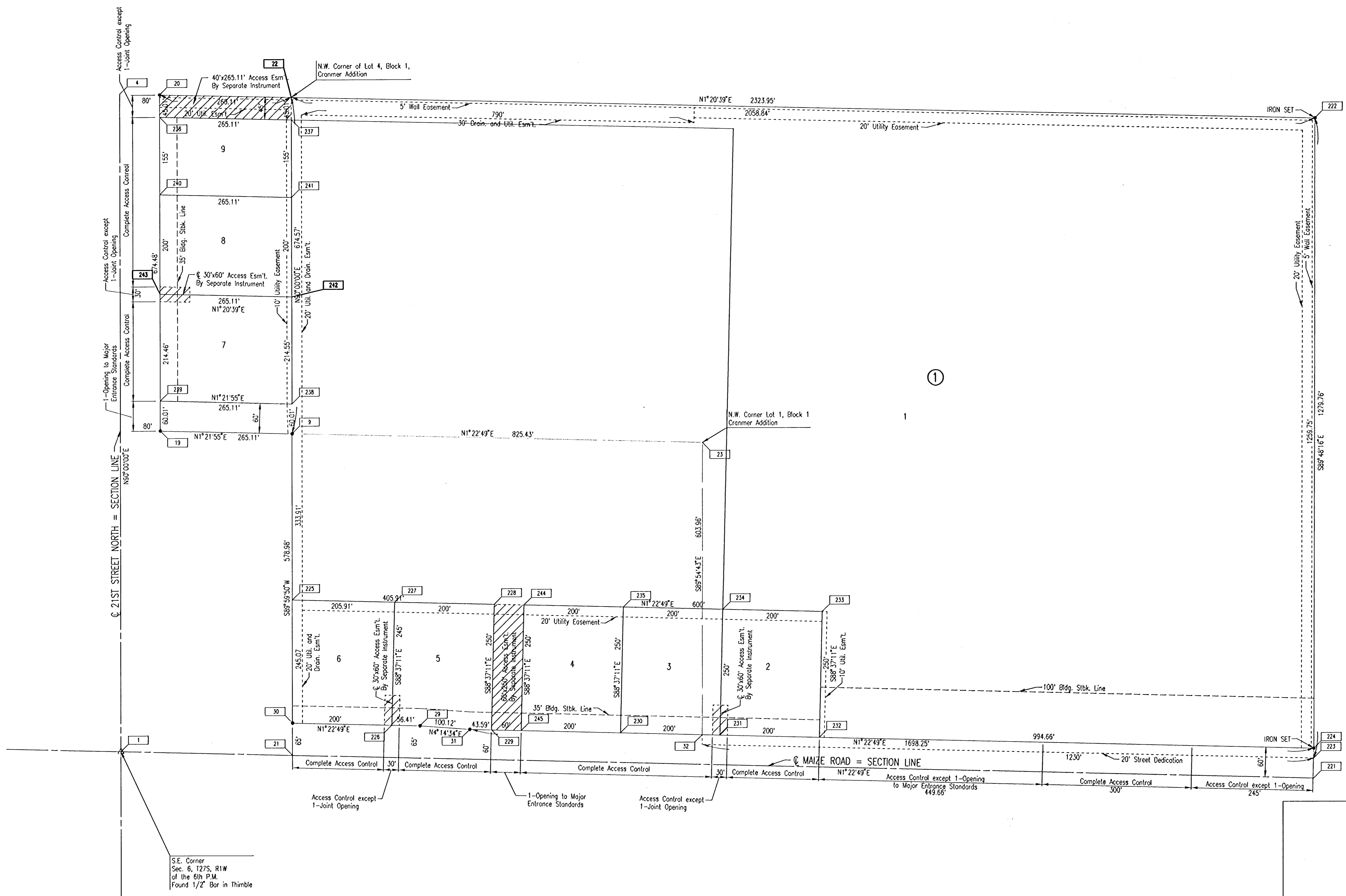
NEWMARKET SQUARE

AN ADDITION TO WICHITA, SEDGWICK COUNTY, KANSAS



SCALE: 1"=100'

• = IRON FOUND



COORDINATE LIST		
POINT	NORTH	EAST
1	5,000.0000	5,000.0000
4	5,000.0001	3,681.6447
9	5,345.0325	4,364.3163
22	5,345.0325	3,689.7410
23	6,170.2203	4,384.1985
221	7,398.7988	5,057.7972
222	7,403.3020	3,738.0388
223	7,398.9353	5,017.7889
224	7,399.0035	4,997.7847
225	5,345.0482	4,698.2237
228	5,750.8451	4,708.0011
232	6,404.6318	4,973.8261
233	6,410.6536	4,723.8986
244	5,810.8277	4,709.4463

1 = COORDINATE POINT NO.

DSNR: PEC OPER: JLM SCALE: 1"=100.00
 Q:\2004\04090\000\City SS\04090-000-C-NewMarketPlat 03-23-2005 11:07:02 am

S.E. Corner
 Sec. 6, 127S, R1W
 of the 6th P.M.
 Found 1/2" Bar in Thimble

Revision No. _____ By _____ Date _____	
LATERAL 1, MAIN 6 OF THE NORTHWEST INTERCEPTOR SEWER NEWMARKET PLAT JAMES L. ARMOUR, P.E. - ACTING CITY ENGINEER CITY OF WICHITA PROJECT NO. 468-83969	
Professional Engineering Consultants, P.A. 303 S. TOPEKA • WICHITA, KANSAS 67202 316-262-2691 • FAX 316-262-3003	
Designed by MDK Drawn by JCA	Job No. 35-04090-5054 Date January 2005
SH. 3 of 18	

