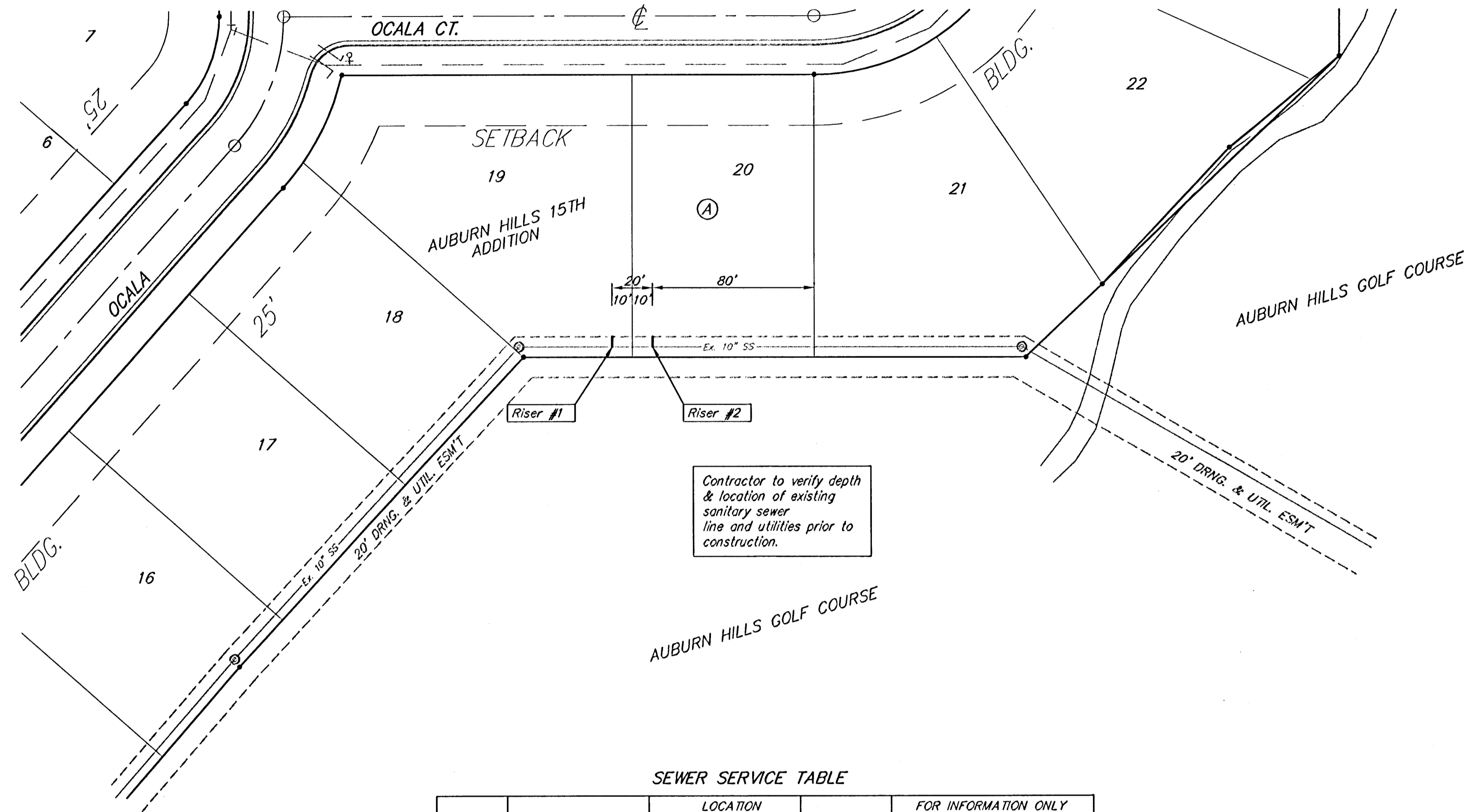


BENCHMARK:

City Disc In T.C. Adj. to F.H. 17.5'
North of Monterey. At the South
West Corner of Lot 10 Block C
Auburn Hills 15th Addition.
Elev. = 177.39 (City Datum)

City Disc In T.C. Adj. to F.H. 27'
North of Monterey. At the
Intersection of Monterey and Auburn
Hills.
Elev. = 179.40 (City Datum)



Scale:
1" = 40' Horizontal
• = Iron

SEWER SERVICE TABLE

NUMBER	TYPE	LOCATION			STATION/ DIRECTION	FOR INFORMATION ONLY	
		LOT NO.	BLOCK NO.	LINE NO.		APPROXIMATE LENGTH 4" PIPE	VERTICAL
1	10" X 4" Tee Saddle	19	A	Existing	Right	14'	25.0'
2	10" X 4" Tee Saddle	20	A	Existing	Right	15'	25.0'

NOTE: Vertical Riser Pipe shall be extended to 2' minimum above ground water elevation and 4' maximum below proposed ground elevation.
Contractor shall use method "B" for riser construction. (See Detail, Sheet 9)

Remove trees only as necessary for sanitary sewer construction and only with permission of Developer or Baughman Co. Cost of removal to be incidental to lump sum bid item "Site Clearing & Restoration".

	AUBURN HILLS 15TH ADDITION	
	RISER PLAN	
<small>Baughman Company, P.A. 319 Elm St. Waltham, MA 02121 P 3162627271 F 3162620149 ENGINEERING SURVEYING PLANNING LANDSCAPE ARCHITECTURE</small>		
PROJECT NUMBER 468-83759	DESIGN ATD	DRAWN DSM
REVISIONS	APPROVED	DATE 03/05
	SCALE NOTED	SHEET
	6 OF 15	
FAENGAUBURN HILLS 15TH ADD		