

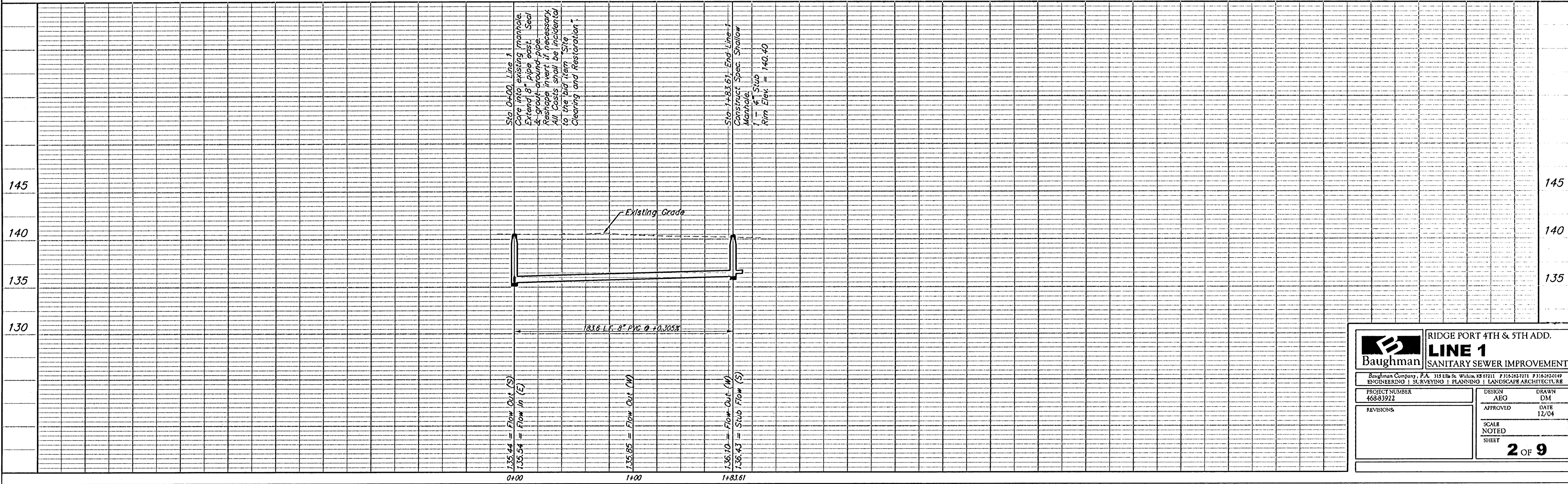
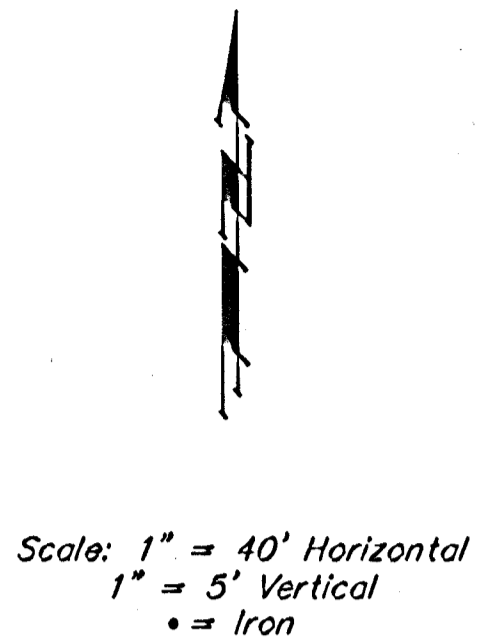
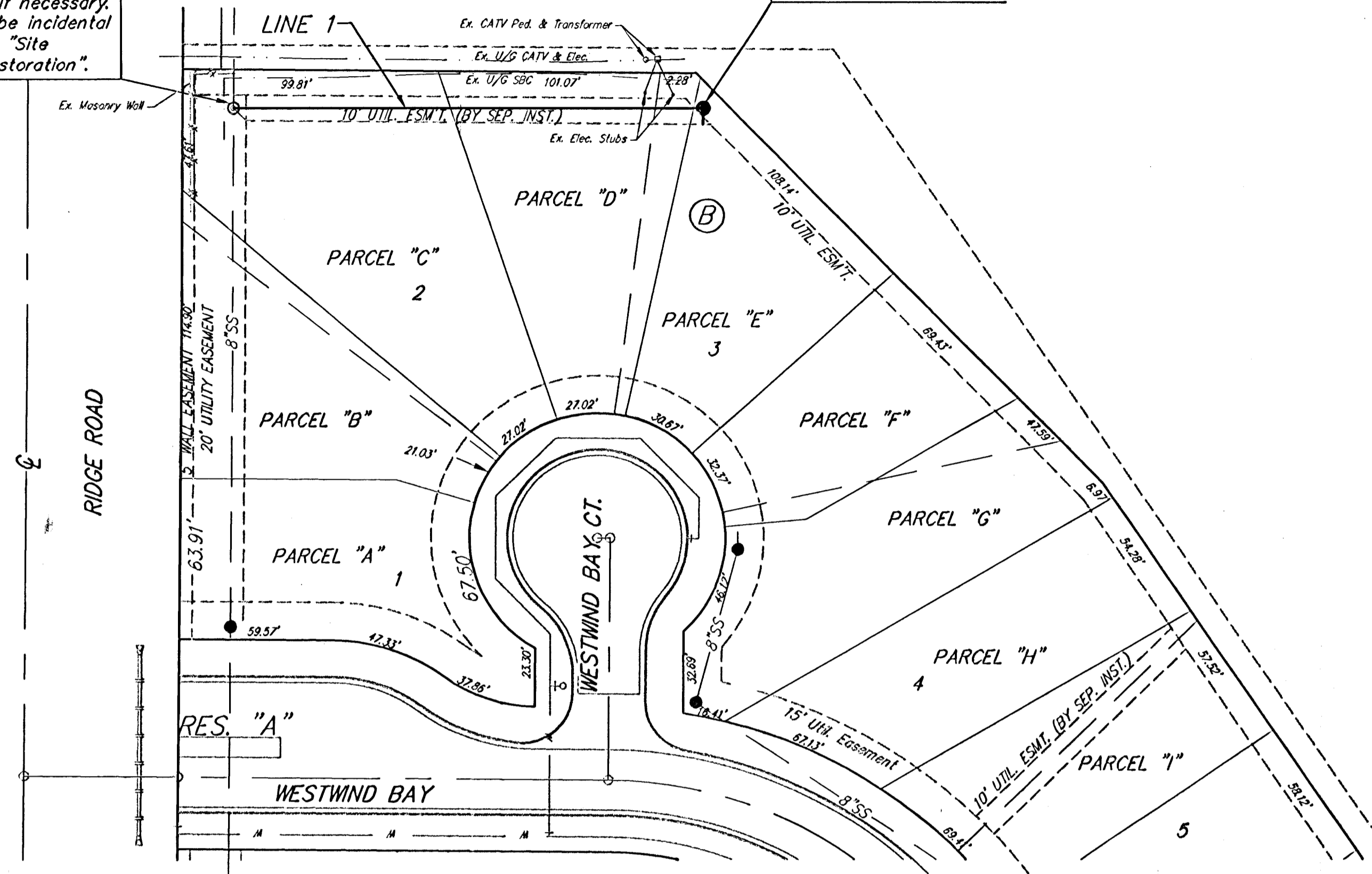
BENCHMARKS:

"□" Cut in C.L. of curb inlet S. R/W of W. 33rd N. 305± west of C.L. Ridge Rd. Elev. = 141.90 (City Datum)

"□" Cut in C.L. of curb inlet N. R/W of Northwind 742± west of C.L. Ridge Rd. Elev. = 143.66 (City Datum)

Sta 0+00, Line 1
Core into existing manhole. Extend 8" pipe east. Seal & grout around pipe. Reshape invert if necessary. All Costs shall be incidental to the bid item "Site Clearing and Restoration".

Sta 1+83.61, End Line 1
Construct Spec. Shallow Manhole. 1 - 4" Stub Rim Elev. = 140.40



	RIDGE PORT 4TH & 5TH ADD.	
	LINE 1	
SANITARY SEWER IMPROVEMENTS		
<small>Baughman Company, P.A., 315 Little St., Wichita, KS 67211 P:316-262-7771 F:316-262-0149 ENGINEERING SURVEYING PLANNING LANDSCAPE ARCHITECTURE</small>		
PROJECT NUMBER 468-83922	DESIGN AEG	DRAWN DM
REVISIONS:	APPROVED	DATE 12/04
SCALE NOTED		SHEET 2 OF 9