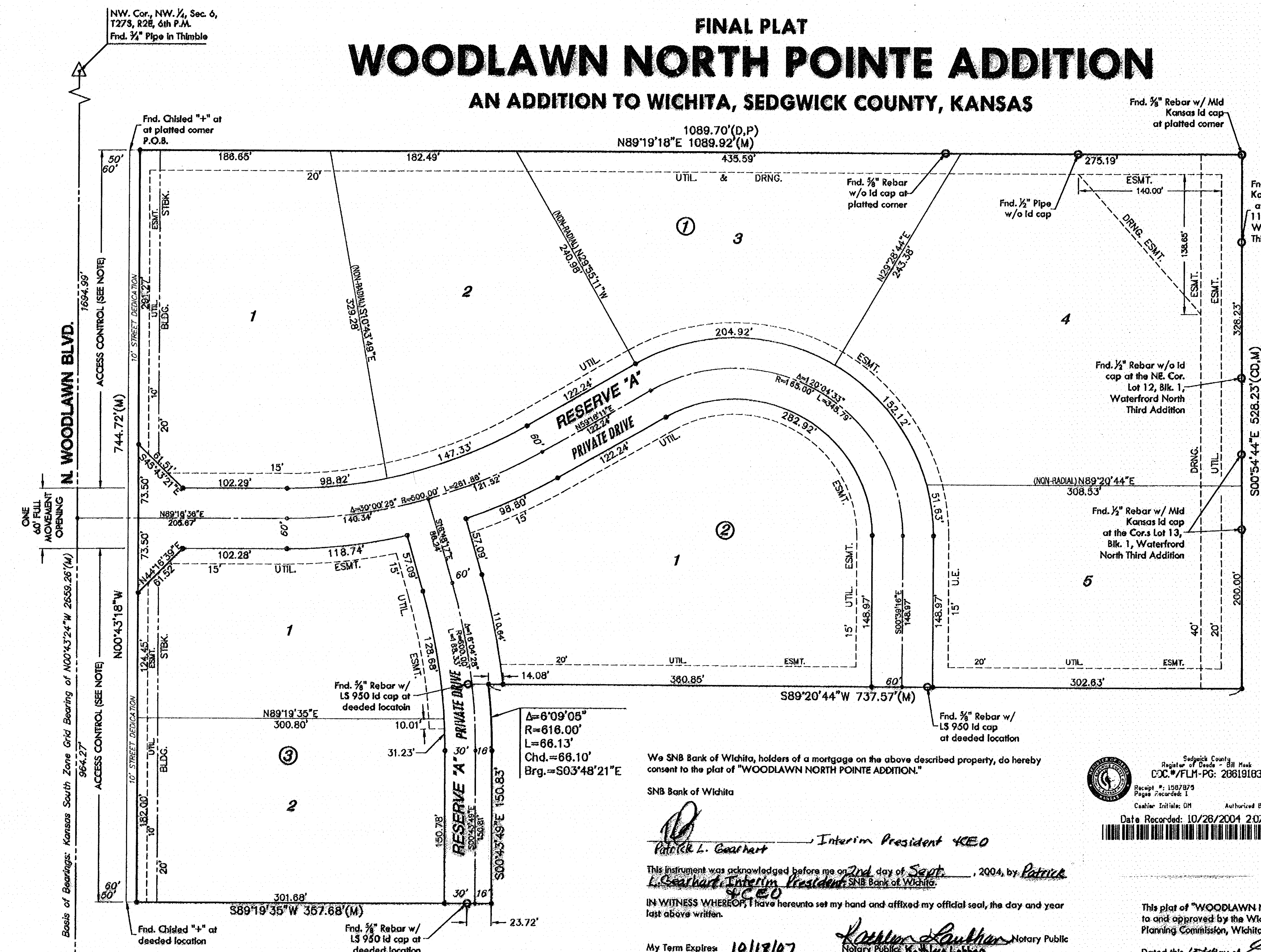


# FINAL PLAT

## WOODLAWN NORTH POINTE ADDITION

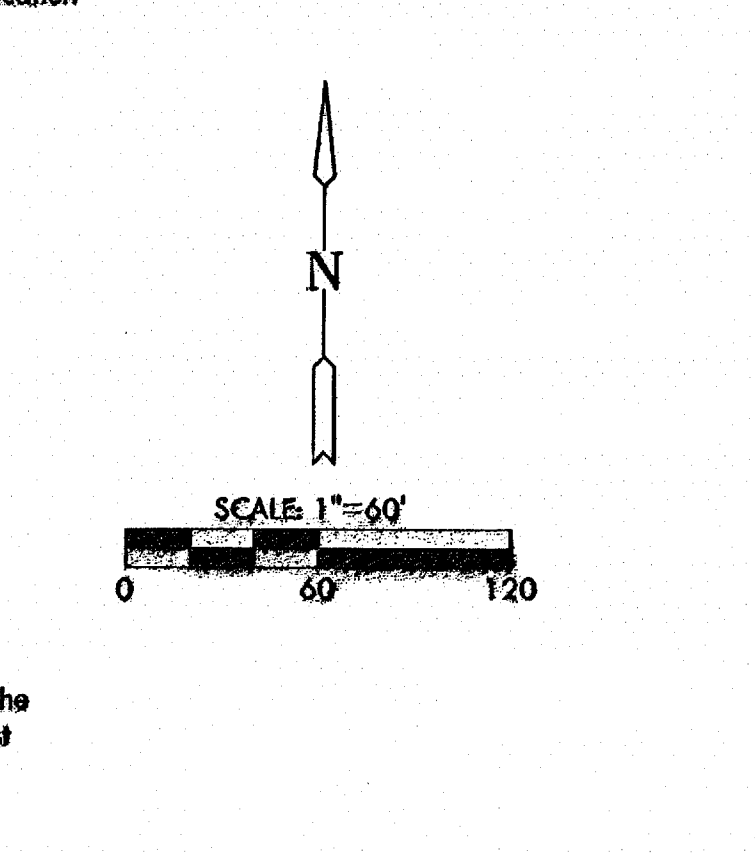
### AN ADDITION TO WICHITA, SEDGWICK COUNTY, KANSAS



**ACCESS CONTROL**  
Woodlawn Blvd. - One access point for Lot 1, Block 1 and One access point for Lot 1 or 2, Block 2 shall be placed accordingly. The minimum distance between a right-in/right-out drive and either another right-in/right-out drive or a full movement drive shall be 200'.

**BENCH MARK**  
City disc at 25th St. N. and Woodlawn Blvd., 24 feet North of the centerline of the East-West hedgerow and 45.3 feet West of the centerline of Woodlawn Blvd. Elev.=189.16 City Datum 1376.56 NGVD

**LEGEND**  
 Δ = Section Corner Monument Found  
 ○ = Found Survey Monument (see annotated caption for type)  
 ● = Set 5/8" Rebar W/ MKEC CLS 39 Id. Cap  
 (P) = Platted  
 (M) = Measured  
 (CM) = Calculated from Measurements  
 (D) = Deeded



We SNB Bank of Wichita, holders of a mortgage on the above described property, do hereby consent to the plat of "WOODLAWN NORTH POINTE ADDITION."

SNB Bank of Wichita  
*Patrick L. Coarhart*, Interim President KEO  
 This instrument was acknowledged before me on 2nd day of Sept, 2004, by Patrick L. Coarhart, Interim President, SNB Bank of Wichita.  
 IN WITNESS WHEREOF, I have hereunto set my hand and affixed my official seal, the day and year last above written.  
 My Term Expires 10/11/07  
*Kathleen Laubhan*, Notary Public, State of Kansas  
 My App. Expires 10/11/07

We Intrust Bank, N.A., holders of a mortgage on the above described property, do hereby consent to the plat of "WOODLAWN NORTH POINTE ADDITION."

INTRUST BANK, N.A.  
*Gary D. Schmitt*, Senior Vice President  
 This instrument was acknowledged before me on 2nd day of September, 2004, by Gary D. Schmitt, Senior Vice President, Intrust Bank, N.A.  
 IN WITNESS WHEREOF, I have hereunto set my hand and affixed my official seal, the day and year last above written.  
 My Term Expires October 31, 2005  
*Deborah S. McGinnis*, Notary Public, State of Kansas  
 My App. Expires 10-31-05

We MKEC Engineering Consultants, Inc., a Registered Corporate Land Surveyor in Kansas, do hereby certify that we have been in responsible charge of surveying and plating of "WOODLAWN NORTH POINTE ADDITION" an addition to Wichita, Sedgwick County, Kansas, into Lots, Blocks, a Reserve, and a Street, the same being accurately set forth in the accompanying plat and described herein.

A tract of land lying in a portion of Lot 1, Block 1, Hinkle's Addition, an addition to Wichita, Sedgwick County, Kansas, being more particularly described as follows:

BEGINNING at the Northwest corner of said Lot 1, thence along the North line of said Lot 1, N89°19'18"E, 1089.91 feet to the Northeast corner of said Lot 1; thence along the East line of said Lot 1, S00°54'44"E, 528.23 feet to the Northeast corner of a tract of land described on Film 2851, Page 2997; thence along the North line of said tract described on said Film 2851, Page 2997 and along the North line of a tract of land described on Film 2550, Page 53, S89°20'44"W, 737.57 feet to a point lying 20.17 feet East of a point of intersection on said North line of said tract described on Film 2550, Page 53; thence along a non-tangent curve to the right 66.13 feet, said curve having a central angle of 06°09'05", a radius of 616.00 feet, and a long chord distance of 66.10 feet, bearing S03°48'21"E, 150.83 feet; thence S89°19'35"W, 23.72 feet to a point of intersection on said North line of said tract described on Film 2550, Page 53; thence along the North line of said tract described on Film 2550, Page 53, S89°19'35"W, 333.96 feet to the West line of said Lot 1; thence parallel with and 50 feet east of the West line of the Northwest Quarter, Section 6, Township 27 South, Range 2 East, of the Sixth principal meridian, and along said West line on a Kansas South Zone Grid Bearing of N00°43'18"W, 744.72 feet to the POINT OF BEGINNING.

The dedicated streets and/or public rights-of-way, platted easements, building setbacks, access control, and public dedications within the above described property, are hereby vacated and replatted by virtue of K.S.A. 12-312(b).

I hereby certify that the details of this plat are correct to the best of my knowledge and belief this 2nd day of August, 2004.

*Gregory J. Allison*  
 Gregory J. Allison, PE, LS #1257  
 MKEC Engineering Consultants, Inc.  
 411 North Webb Road  
 Wichita, Kansas 67206

Know all men by these presents that we the undersigned property owners of the land above set forth in the Registered Land Surveyor's Certificate, have caused the same to be surveyed and platted into Lots, a Block, a Reserve, and a Street, the same to be known as "WOODLAWN NORTH POINTE ADDITION" an addition to Wichita, Sedgwick County, Kansas. Streets are hereby dedicated to and for the use of the public. Easements for the construction and maintenance of public utilities and drainage, as indicated on the accompanying plat are hereby granted to the public. Reserve "A" is platted for a private drive, landscaping, irrigation, drainage, utilities, street lights, monuments, signs, berming, and parking. The Reserve shall be owned and maintained by the lot owner's association. All egress rights of access to or from North Woodlawn Boulevard over and across the West line of "WOODLAWN NORTH POINTE ADDITION," are hereby granted to the appropriate governing body. A drainage plan has been developed for this plat and all drainage easements, right-of-way, or Reserve shall remain at established grades or as modified with the approval of the City Engineer, and unobstructed to allow for the conveyance of storm water.

InSite Medical Partners LLC, a Kansas limited liability company

*John Mullen*, Manager  
 Dan P. Uhrh, Manager  
 STATE OF KANSAS, SEDGWICK COUNTY) ss:  
 This instrument was acknowledged before me on 1st day of September, 2004, by Dan P. Uhrh, Manager, InSite Real Estate Group LLC, a Kansas limited liability company.  
 IN WITNESS WHEREOF, I have hereunto set my hand and affixed my official seal, the day and year last above written.  
 My Term Expires October 31, 2005  
*Deborah S. McGinnis*, Notary Public, State of Kansas  
 My App. Expires 10-31-05

*John Mullen*, Manager  
 STATE OF KANSAS, SEDGWICK COUNTY) ss:  
 This instrument was acknowledged before me on 31 day of August, 2004, by John Mullen, Manager, Galichia Medical Properties, LLC, a Kansas limited liability company.  
 IN WITNESS WHEREOF, I have hereunto set my hand and affixed my official seal, the day and year last above written.  
 My Term Expires 12/05/06  
*Virginia B. Koelling*, Notary Public, State of Kansas  
 My App. Expires 12-31-06

Sedgwick County  
 Register of Deeds - Bill Meek  
 DOC #/FLM-PG: 26618183  
 Receipt #: 1587875  
 Pages Recorded: 1  
 Recording Fee: \$20.00  
 Counter Initials: DM  
 Authorized By: *[Signature]*  
 Date Recorded: 10/26/2004 2:07:58 PM

This plat of "WOODLAWN NORTH POINTE ADDITION" has been submitted to and approved by the Wichita-Sedgwick County Metropolitan Area Planning Commission, Wichita, Kansas.

Dated this 15th day of Sept, 2004

WICHITA-SEDGWICK COUNTY METROPOLITAN PLANNING COMMISSION

*Ronald L. Martelli*, Chair  
*John L. Schluger*, Secretary  
*Carlos Mayans*, Mayor  
*Karen Sublett*, City Clerk

Entered on transfer record this 26th day of October, 2004  
 Don Bruce, County Clerk  
 STATE OF KANSAS, SEDGWICK COUNTY) ss:  
 This is to certify that this instrument was filed for record in the Register of Deeds office this 26th day of October, 2004, at 2:07 o'clock PM and is duly recorded.  
*Bill Meek*, Register of Deeds  
*Debra Mankin*, Deputy  
 Reviewed in accordance with K.S.A. 58-2005 on this 21st day of September, 2004.  
*Tricia L. Robello*, Deputy County Surveyor  
 Tricia L. Robello, 1246  
 Deputy County Surveyor  
 Sedgwick County, Kansas