

Elev = 1348.90
Top of Conc

NOTE: INSTALL CONDUIT WITH PULLSTRING IN EACH DIRECTION TO ALLOW FOR TRANSFORMER LOCATION EITHER NORTH OR SOUTH OF BRIDGE

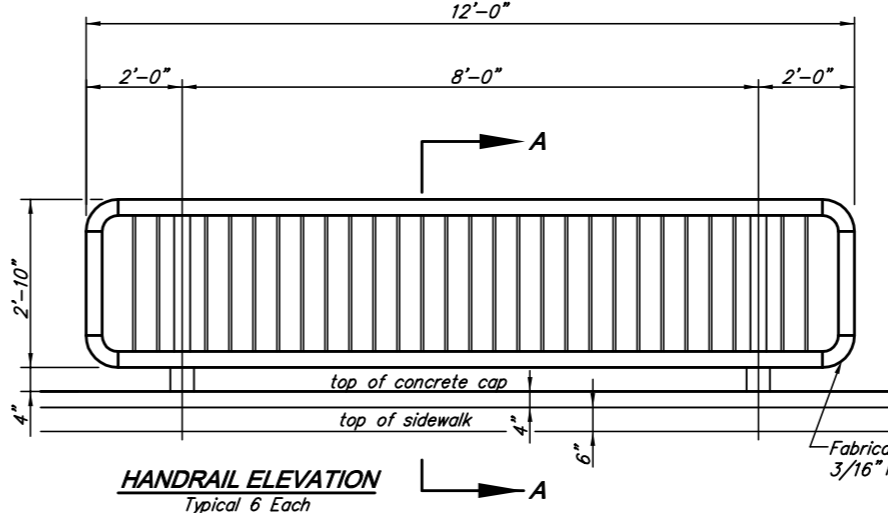
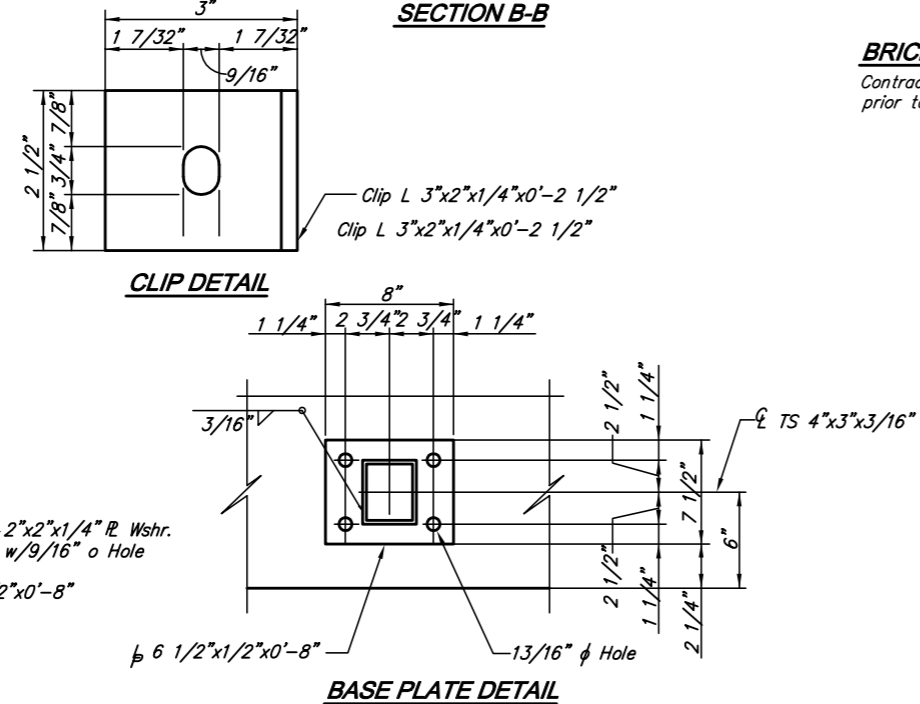
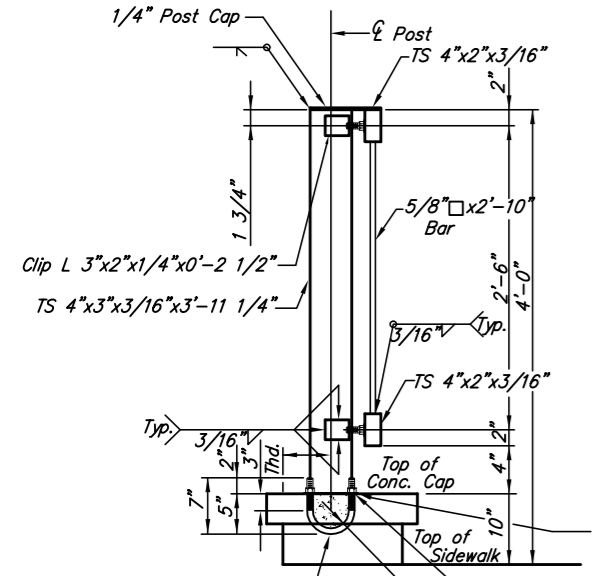
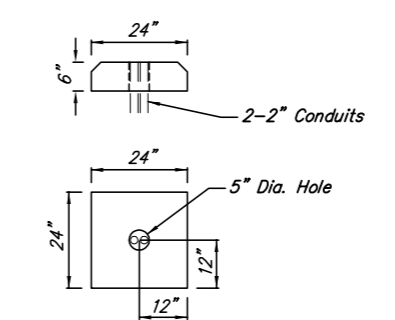
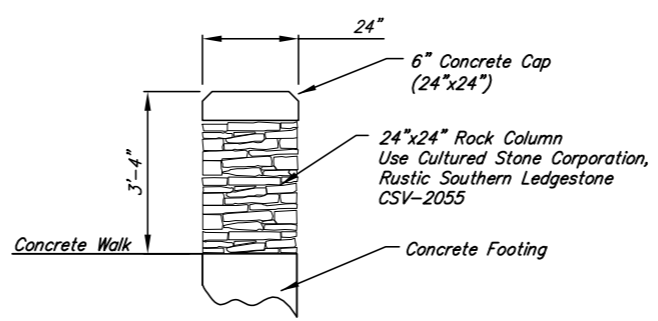
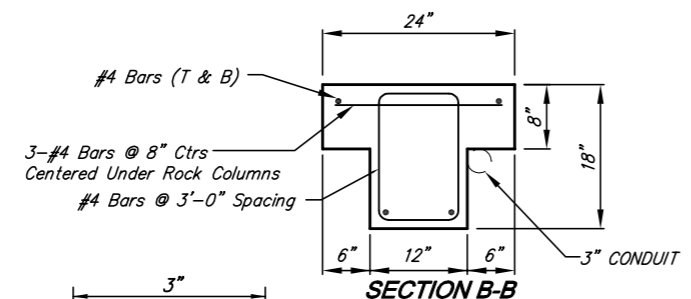
24" x 24" Rock Columns
See Detail this Sheet

Install 2" Electrical Conduit in each Column for Lights

#4 Bars (T & B)
#4 'L' Bars
(Install All Reinf. in Front and Back)

Proposed 5'x8' RCB

#4 Bars @ 3'-0" Spacing



BRIDGE HANDRAIL NOTES:
The rail members shall conform to ASTM Designation A36 or equivalent.
Rail shall be fabricated in lengths to include a minimum of two and a maximum of three panels. Posts shall be set vertical. Shims may be used between concrete and base plates of posts.
All parts of Bridge Handrail shall be painted. Shop and field coats shall conform to organic or inorganic Zinc for primer and "High-Build Polyurethane Finish Coat" at the Standard Specifications for State Road and Bridge Construction, 1990 Edition, Kansas Department of Transportation.
All materials, equipment and labor necessary for the installation of the Handrail on the bridge shall be subsidiary to the bid item, "Handrail".
Handrail shall be hunter Green in color. Contractor to submit color chart to Engineer for approval.
Touch Up: All bolts, nuts and studs and other small areas of damaged paint (10 S.F. or less) requiring touch up will be prepared and painted w/approved alluminum epoxy mastic primer.

ALL WORK AND MATERIAL ON THIS SHEET SHALL BE BID UNDER 'LUMP SUM' FOR HANDRAIL CONSTRUCTION.

**CASA BELLA ADDITION
HANDRAIL DETAILS
WICHITA, KANSAS**

Ruggles & Bohm, P.A.
Engineering, Surveying, Land Planning

924 North Main
Wichita, Kansas 67203
www.rbkansas.com

(316) 264-8008
(316) 264-4821 fax
E-mail: info@rbkansas.com

DESIGN	EJG	PROJECT	#276
DRAWN	MLP	DATE	17
REVIEW		NOV	29
UTILITY			32

DRAWING FILE: WEIR {HANDRAIL DETAILS} PROJECT NUMBER: SWD #276 DATE: Nov. 29, 2005