

STORM WATER SEWER #618 to serve FALCON FALLS 3RD ADD. - PH. I

CITY OF WICHITA, KANSAS

James L. Armour, P.E. City Engineer

Project Number

468-84099

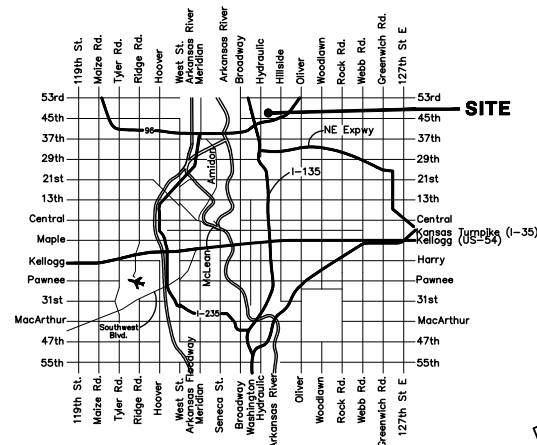
O.C.A. Number:

751420

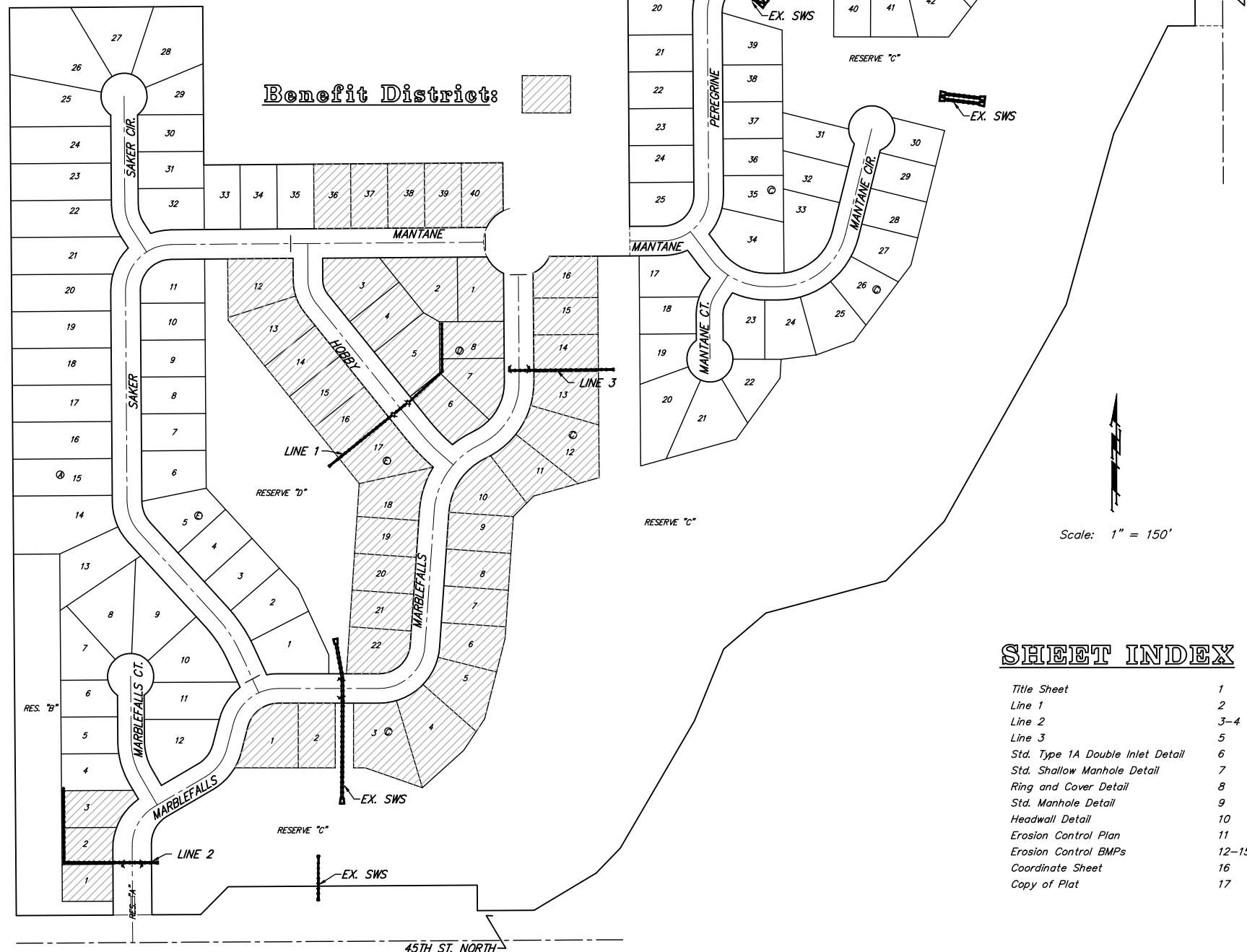
BENCHMARKS

BM #1: "□" on west end of median approx. 1020' west of intersection of Hillside and 45th St. N.
Elev. = 1348.19 MSL

BM #2: "□" on hub guard at the SE corner of bridge approx. 2130' west of intersection of Hillside and 45th St. N.
Elev. = 1346.24 MSL



Vicinity Map



GENERAL NOTES:

- Contractor will be required to provide notice to utility companies a minimum of forty-eight (48) hours prior to any excavation, as follows:

| | |
|-----------------|----------|
| Kansas One-Call | 687-2470 |
|-----------------|----------|

The Contractor must notify the following in case of an emergency:

| | |
|------------------------------------|----------------|
| Cox Communications | 262-4270 |
| Kansas Gas Service | 1-888-482-4950 |
| Westar Energy | 383-8650 |
| Aquila Energy | 1-800-303-0357 |
| SBC | 268-2245 |
| City of Wichita Water Dept. | 268-4563 |
| City of Wichita Sewer Maint. | 268-4024 |
| City of Wichita Storm Sewer Maint. | 268-4090 |
| City of Wichita Traffic Maint. | 268-4034 |
| Conoco Phillips Pipeline | 1-877-267-2290 |
| Southern Star Pipeline | 529-6600 |
| Kinder Morgan Pipeline | 1-888-844-5658 |
| Enbridge Pipeline | 1-800-323-6241 |
- Utility service lines, poles, valve boxes, meters, and etcetera are to be adjusted as necessary by others prior to construction unless the plans specifically call for their adjustment by the Contractor or unless the plans specifically identify a utility to be adjusted by its owner during construction. Existing utilities and their location, as shown on the plans, represent the best information obtainable for design. The Contractor will be required to work around existing utilities within the right-of-way which do not conflict with proposed construction.
- Rubble from the removal of miscellaneous structures and excess excavation which is to be wasted shall be disposed of on sites to be provided by the Contractor. These sites shall be approved by the Engineer as to suitability, appearance and site location. Locations, in the opinion of the Engineer, that will leave an unsightly appearance will not be approved. All disposal sites must be approved by the Kansas Department of Health and Environment. Material either stockpiled or disposed of in a flood plain would require a Kansas State Board of Agriculture permit. Any material dumped in waters of the United States or wetlands is subject to U.S. Corps. of Engineers permitting regulations. Any material buried or stockpiled beyond approved construction limits would require additional archaeological investigations unless buried in a previously approved borrow location.
- Trees and shrubs in public right-of-way which are in direct conflict with proposed new construction shall be removed by the Contractor with the Engineer's approval. Trees and shrubs which are not in direct conflict with proposed new construction shall be saved and protected from damage.
- The Contractor shall give all property owners and/or tenants of developed property abutting the construction of this project a minimum of ten (10) days notice prior to start of construction.
- The Contractor shall be responsible for preserving property irons. The Contractor will be required to re-establish any property irons which are damaged or destroyed by his construction operations. Such irons shall be re-established by a licensed land surveyor in accordance with state laws.
- All existing and proposed erosion control measures including silt fencing, erosion control mat, straw bales, inlet barriers, and const. entrance shall be maintained throughout construction by the contractor and until project is accepted by the City of Wichita. The on-site engineer shall complete weekly reports on the status of erosion control measures. The contractor shall be required to comply with maintenance and/or replacement of erosion control measures as determined by the on-site engineer until project is accepted by City of Wichita. Maintenance and/or replacement of erosion control measures to be paid by L.S. bid item "Site Clearing & Restoration."
- All excess excavation shall remain on-site and shall be stockpiled or spread at a location determined by the engineer.
- The developer for this project is Jay Russell, (316)722-2417.
- All areas, outside of Reserve "C" or Reserve "D", disturbed during construction shall be seeded at 300 lbs./acre with Rye Grass immediately following construction in that area. All areas within Reserve "C" or Reserve "D" disturbed during construction shall be permanently seeded with fescue, mulched, and fertilized per City Specifications. Contractor shall prepare ground per City Specifications.
- All areas disturbed during construction shall be re-graded to pre-construction elevations and as shown on the Erosion Control Plan. All excess excavation shall be stockpiled or spread at an area determined by the engineer. Seeding will be required in all areas disturbed by stockpiling or spreading the excess excavation. All work required to restore elevations and to move excess excavation shall be incidental to "Site Clearing & Restoration" bid item.
- Trees and shrubs in public right-of-way which are in direct conflict with proposed new construction shall be removed by the Contractor ONLY with the Developer or Baughman Company approval. Trees and shrubs which are not in direct conflict with proposed new construction shall be saved and protected from damage.

SHEET INDEX

| | |
|----------------------------------|-------|
| Title Sheet | 1 |
| Line 1 | 2 |
| Line 2 | 3-4 |
| Line 3 | 5 |
| Std. Type 1A Double Inlet Detail | 6 |
| Std. Shallow Manhole Detail | 7 |
| Ring and Cover Detail | 8 |
| Std. Manhole Detail | 9 |
| Headwall Detail | 10 |
| Erosion Control Plan | 11 |
| Erosion Control BMPs | 12-15 |
| Coordinate Sheet | 16 |
| Copy of Plat | 17 |



Baughman Company, P.A. 315 Ellis St. Wichita, KS 67211 P 316-262-7271 F 316-262-0149
ENGINEERING | SURVEYING | PLANNING | LANDSCAPE ARCHITECTURE