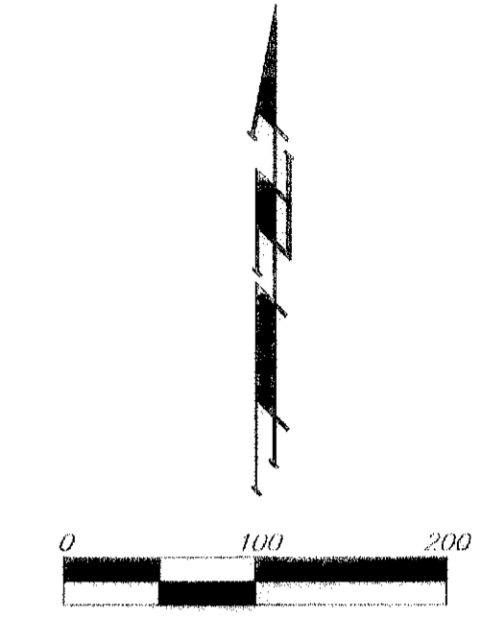
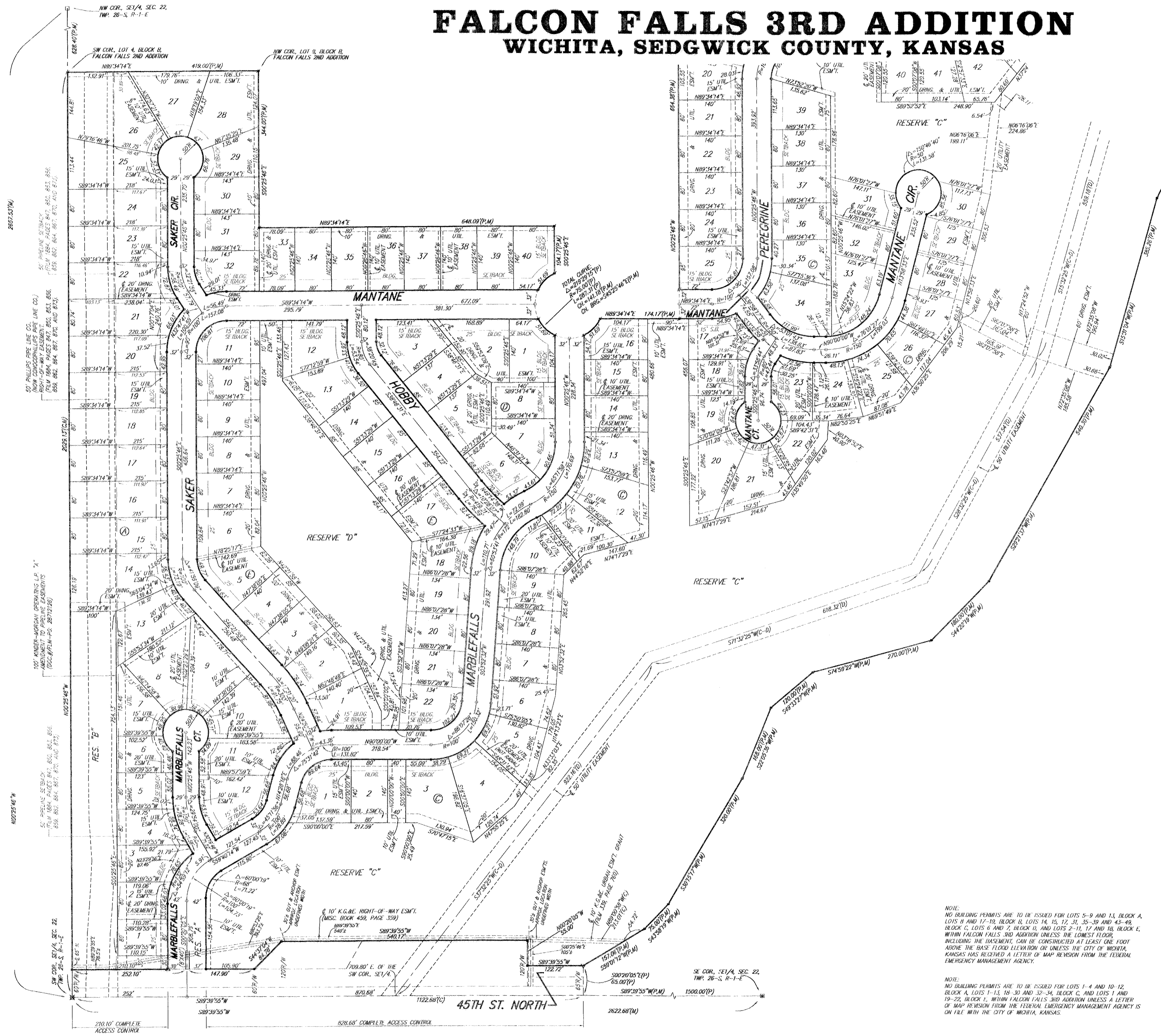


FALCON FALLS 3RD ADDITION WICHITA, SEDGWICK COUNTY, KANSAS



- = #4 REBAR W/ "BAUGHMAN" CAP (SET)
 - = #4 REBAR W/ "BAUGHMAN" CAP (FOUND)
 - ⊗ = 1/2" PIPE (FOUND)
 - = STONE (FOUND)
 - ⊞ = #0 REPAIR IN HUMBLE (FOUND)
 - ⊞ = #0 REPAIR IN HUMBLE (FOUND)
 - △ = 60# NAIL IN TRUL (SET)
 - ▽ = 3/4" IRON W/ "BAUGHMAN" CAP (FOUND)
- (M) = MEASURED
 (P) = PLATED
 (C) = CALCULATED
 (D) = DESCRIBED
 (C-D) = CALCULATED PER DESCRIBED INFO.

BENCHMARK:
 "1" CUT ON E. HURGUARD OF R.C.E.C.
 110' S. OF THE SE COR., SE 1/4, SEC. 22,
 TWP. 26-S, R-1-E.
 ELEV. = 1559.54 NAVD89

MINIMUM BUILDING PAD ELEVATIONS FOR LOWEST OPENING TO THE STRUCTURES		
LOT	BLOCK	ELEVATION
1-7, 13, 14	A	1547.0
1-27	C	1540.0
28-31, 37-50	C	1549.0
7, 8, 18-25	B	1553.0
1-22	E	1547.0

NOTE:
 A master grading plan for drainage has been developed for this subdivision and is on file with the City of Wichita, Kansas. All drainage easements, right-of-ways, or reserves shall remain at established grades or as modified with the approval of the City Engineer of the City of Wichita, Kansas. No obstructions which impede the flow of this drainage system shall be allowed.

NOTE:
 NO BUILDING PERMITS ARE TO BE ISSUED FOR LOTS 5-9 AND 13, BLOCK A, LOTS 8 AND 17-19, BLOCK B, LOTS 14, 15, 17, 31, 35-39 AND 43-49, BLOCK C, LOTS 6 AND 7, BLOCK D, AND LOTS 2-11, 17 AND 18, BLOCK E, WITHIN FALCON FALLS 3RD ADDITION UNLESS THE LOWEST FLOOR, INCLUDING THE BASEMENT, CAN BE CONSTRUCTED AT LEAST ONE FOOT ABOVE THE BASE FLOOD ELEVATION OR UNLESS THE CITY OF WICHITA, KANSAS HAS RECEIVED A LETTER OF MAP REVISION FROM THE FEDERAL EMERGENCY MANAGEMENT AGENCY.

NOTE:
 NO BUILDING PERMITS ARE TO BE ISSUED FOR LOTS 1-4 AND 10-12, BLOCK A, LOTS 1-13, 18-30 AND 32-34, BLOCK C, AND LOTS 1 AND 19-22, BLOCK E, WITHIN FALCON FALLS 3RD ADDITION UNLESS A LETTER OF MAP REVISION FROM THE FEDERAL EMERGENCY MANAGEMENT AGENCY IS ON FILE WITH THE CITY OF WICHITA, KANSAS.

PAGE 2 OF 2

Baughman Companies, P.A.
 315 Main St., Wichita, KS 67202 | P: 316.262.2121 | F: 316.262.2125
 FAX: 316.262.2125 | WWW.BAUGHMANCOMPANIES.COM