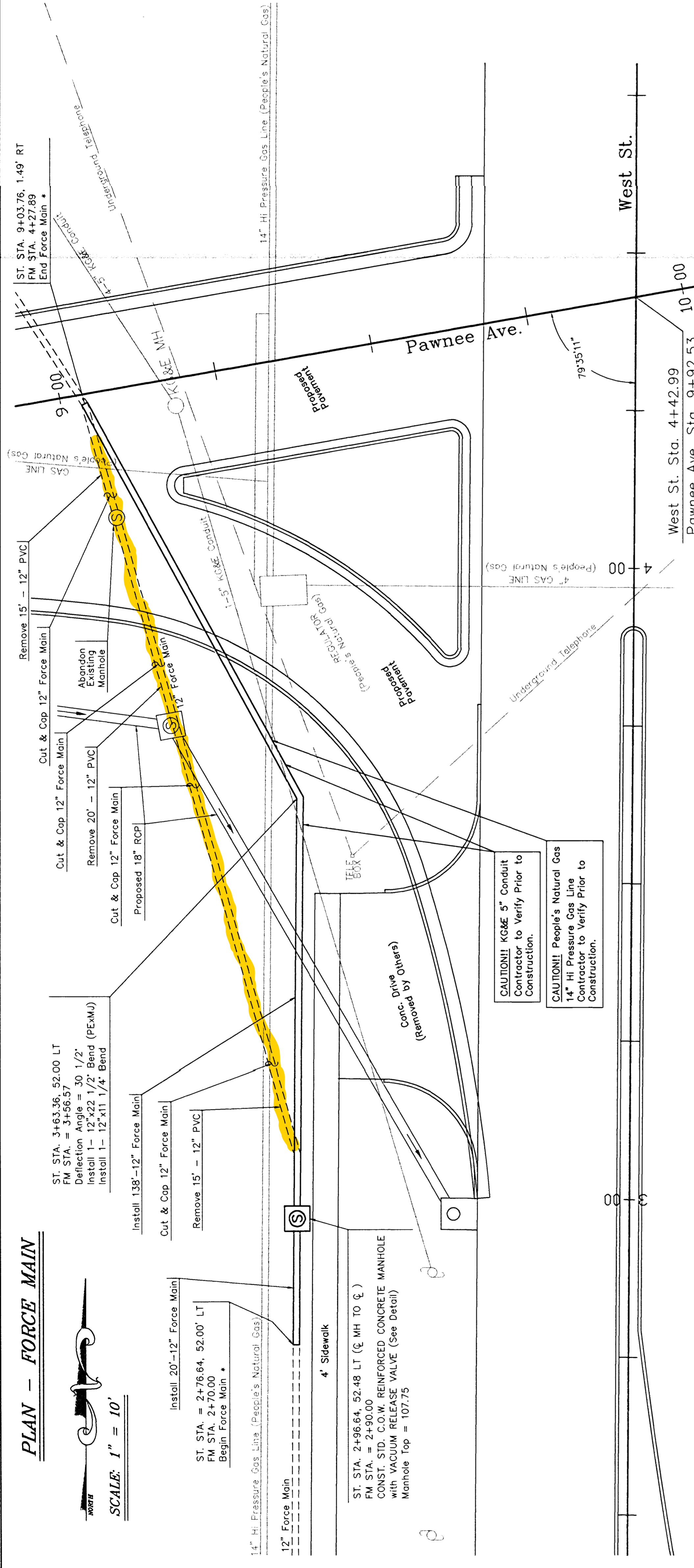
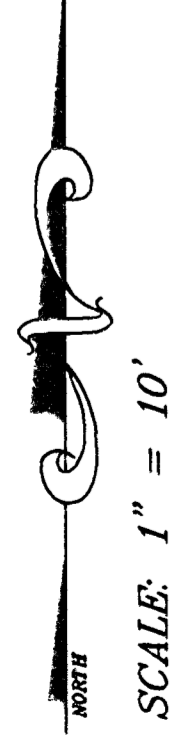


PLAN - FORCE MAIN



FWHA Region No.	7	State	Kansas	Project Number	472-82477	Year	1994	Sheet No.	10	Total Sheets	38
-----------------	---	-------	--------	----------------	-----------	------	------	-----------	----	--------------	----

BM #1 - C.O.W. Benchmark Disc on centerline of West Street and 49.23' north of Quarter Section Corner West St. STA. 5+89.55, 0.75' Lt. Elev. = 109.88

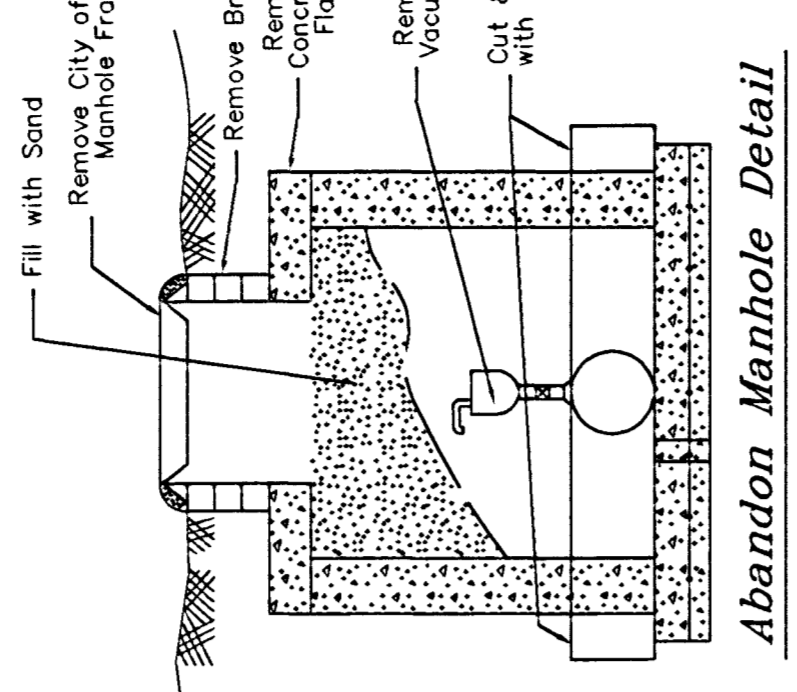
BM #2 - "D" Cut in centerline of Northbound K-42 on west R.O.W. line extended. West St. STA. 6+37.73, 50' Lt. Elev. = 109.81

The Contractor, when required, shall provide for the transfer of flow around the section or sections of pipe that are to be constructed. The bypass shall be made by diversion of the flow at an existing upstream access point and pumping the flow into a downstream access point or adjacent system. The pump and bypass lines shall be of adequate capacity and size to handle the flow. The proposed bypassing system shall be as approved in advance by the Engineer. The approval of the bypassing system in advance by the Engineer shall in no way relieve the Contractor of his responsibility and/or liability.

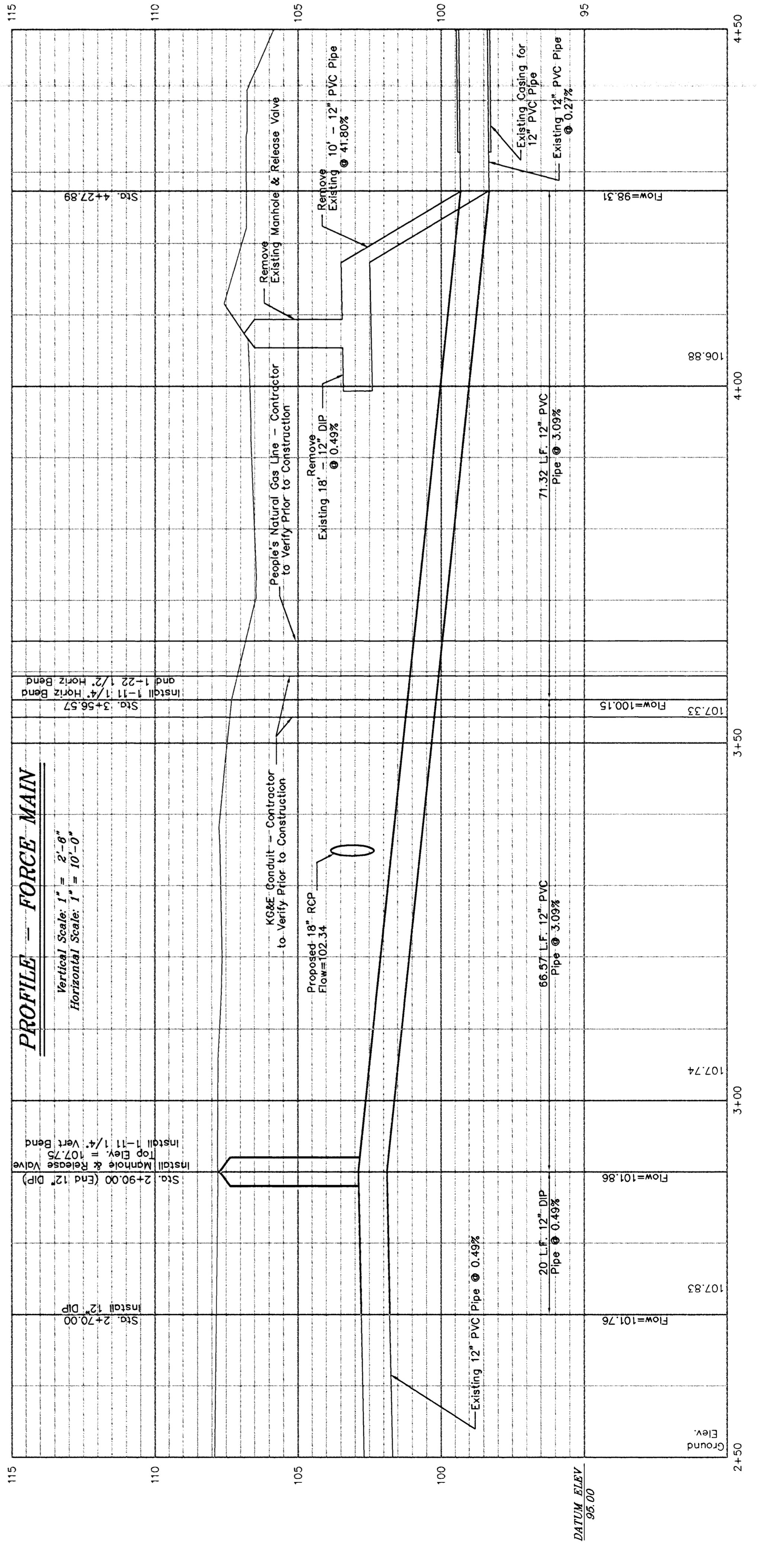
The Contractor shall make arrangements as necessary with adequate notification to involved property owners and/or tenants, to insure that waste water will not be discharged from building sewer lines during the installation of the liner pipe or until such time building sewers are reconnected to the liner pipe and functional.

CAUTION!! K&M 5" Conduit Contractor to Verify Prior to Construction.

CAUTION!! People's Natural Gas 14" HI Pressure Gas Line Contractor to Verify Prior to Construction.

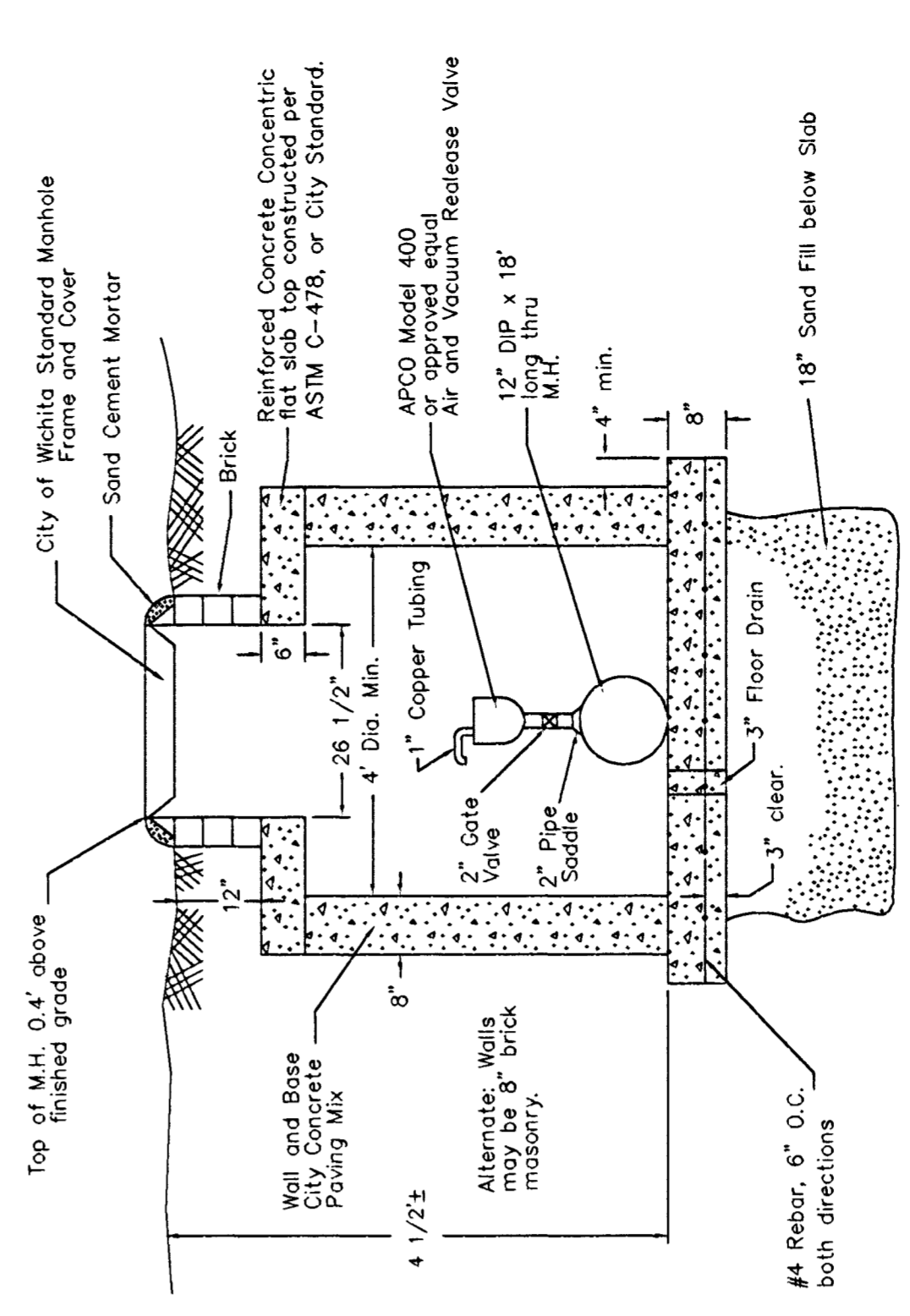


Abandon Manhole Detail



PROFILE - FORCE MAIN

Vertical Scale: 1" = 2'-0"
Horizontal Scale: 1" = 10'-0"



Air & Vacuum Release Detail

Description	K-42/Pawnee Ave/West St Force Main Plan Sheet		
Scale: 1"=10'	Drawn By: SAC	Index No.:	706028
Date: Nov 1994	Revised: Jun 95 (Apr 95)		
CITY OF WICHITA, KANSAS DEPARTMENT OF PUBLIC WORKS ENGINEERING DIVISION City Engineer - Michael E. Lindabak			