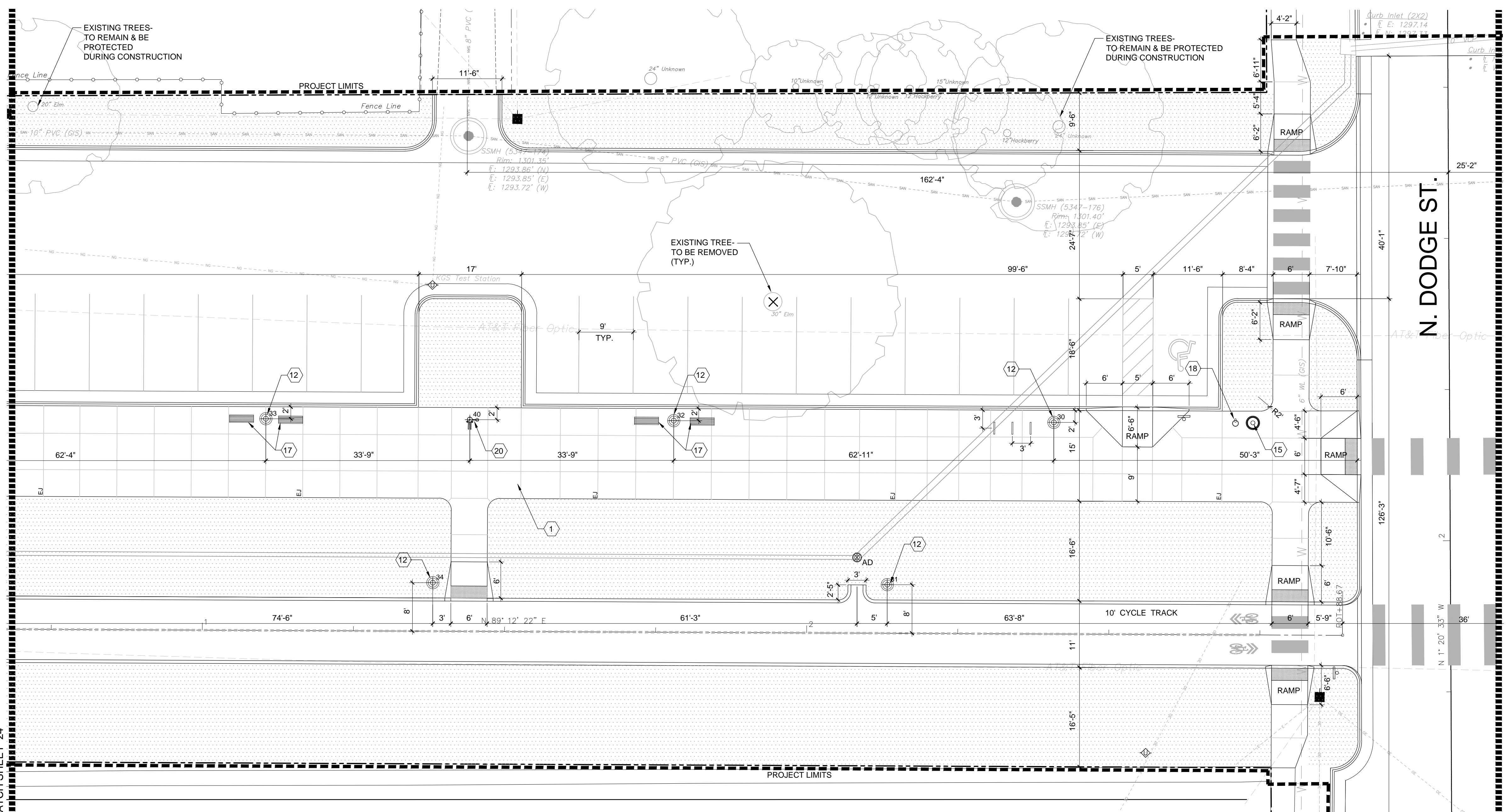


NORTHING/EASTING POINT SCHEDULE

POINT	DESCRIPTION	NORTHING	EASTING
1	Light Bollard	N 1685190.4976	E 1645462.9993
2	Light Bollard	N 1685205.3324	E 1645431.2172
3	Light Bollard	N 1685204.8442	E 1645399.6723
4	Light Bollard	N 1685204.3560	E 1645368.1274
5	Light Pole	N 1685181.1276	E 1645249.8276
6	Light Pole	N 1685152.2270	E 1645203.2987
7	Light Pole	N 1685180.4754	E 1645153.8920
8	Light Pole	N 1685201.2883	E 1645100.6546
9	Light Pole	N 1685200.2493	E 1645046.6646
10	Light Pole	N 1685199.2103	E 1644992.6746
11	Light Pole	N 1685146.0207	E 1645036.7211
12	Light Pole	N 1685168.6686	E 1644844.3552
13	Light Pole	N 1685180.6817	E 1644790.4660
14	Light Pole	N 1685179.6693	E 1644735.4753
15	Light Pole	N 1685178.7252	E 1644684.1922
16	Light Pole	N 1685126.4606	E 1644792.5196
17	Light Pole	N 1685125.2600	E 1644727.3050
18	Light Pole	N 1685124.0175	E 1644659.8164
19	Light Pole	N 1685161.4402	E 1644638.2485
20	Light Pole	N 1685156.4134	E 1644519.5214
21	Light Pole	N 1685155.3826	E 1644463.5308
22	Light Pole	N 1685154.3518	E 1644407.5403
23	Light Pole	N 1685153.3210	E 1644351.5498
24	Light Pole	N 1685152.2902	E 1644295.5593
25	Light Pole	N 1685164.7775	E 1644150.3060
26	Light Pole	N 1685143.8361	E 1644096.7994
27	Light Pole	N 1685112.9892	E 1644055.7723
28	Light Pole	N 1685116.9857	E 1644008.1929
29	Light Pole	N 1685135.0101	E 1643952.1541
30	Light Pole	N 1685161.2683	E 1643828.5889
31	Light Pole	N 1685133.9177	E 1643801.5118
32	Light Pole	N 1685160.3968	E 1643765.6950
33	Light Pole	N 1685159.4616	E 1643698.2014
34	Light Pole	N 1685132.8759	E 1643726.3225
35	Light Pole	N 1685131.7744	E 1643646.8301
36	Light Pole	N 1685158.5977	E 1643635.8574
37	Light Pole	N 1685128.2147	E 1643486.3026
38	Light Bollard	N 1685117.5402	E 1643431.5543
39	Light Pole	N 1685160.1505	E 1643432.5813
40	Center Bike Repair Station	N 1685159.9324	E 1643731.9482
41	Center of Foundation	N 1685138.3870	E 1644150.9115
42	Center of Foundation	N 1685142.2428	E 1643610.1844
43	Begin Stone	N 1685138.7983	E 1644499.7992
44	End Stone	N 1685126.1365	E 1644407.2235
45	Begin Stone	N 1685142.2763	E 1644403.2783
46	End Stone	N 1685127.5494	E 1644313.1304
47	Midpoint Conc. Pad	N 1685146.1538	E 1644508.9915
48	Sidewalk Corner	N 1685149.9904	E 1644467.2036
49	End of Sidewalk	N 1685157.9778	E 1644467.2036
50	Edge of Concrete	N 1685134.0663	E 1644408.5887
51	End of Sidewalk	N 1685156.9758	E 1644412.7742
52	Midpoint Conc. Pad	N 1685136.7836	E 1644365.2736
53	Midpoint Conc. Pad	N 1685136.0210	E 1644320.9499
54	End of Sidewalk	N 1685148.2289	E 1644281.3179
55	Corner of Sidewalk	N 1685133.4722	E 1644275.6338
56	Corner of Dog Park	N 1685207.6257	E 1644170.5698
57	Corner of Dog Park	N 1685168.5335	E 1644171.3302
58	Point of Curvature-Band	N 1685129.1329	E 1644075.9263
59	Point of Curvature-Band	N 1685119.2091	E 1644009.3403
60	Corner of Dog Park	N 1685138.2409	E 1643934.0947
61	Corner of Dog Park	N 1685202.9978	E 1643932.6279
62	Begin Concrete Band	N 1685205.0702	E 1644090.6003
63	Point of Curvature-Band	N 1685184.2752	E 1644017.5573
64	End of Concrete Band	N 1685170.6503	E 1643967.2333
65	Endpoint of Radius	N 1685165.6014	E 1643947.9829
66	Begin Radius	N 1685128.6071	E 1643992.2207
67	Begin Concrete Band	N 1685122.1741	E 1644006.0250
68	End of Concrete Band	N 1685141.8394	E 1644088.2732
69	Corner of Sidewalk	N 1685139.0483	E 1644179.2246
70	Corner of Sidewalk	N 1685110.6598	E 1643925.2128
71	Center of Radius	N 1685156.3933	E 1643998.0998
72	Center of Radius	N 1685224.4581	E 1644045.5991
73	Center of Radius	N 1685159.2652	E 1644153.1521
74	Center of Radius	N 1685100.9277	E 1644054.5800
75	Center of Radius	N 1685140.7501	E 1643964.7881
76	Center of Radius	N 1685138.2564	E 1643455.9190
77	Center of Radius	N 1685177.4701	E 1643528.3763
78	Begin Concrete Band	N 1685127.1604	E 1643534.1416
79	Corner of Conc. Band	N 1685188.4619	E 1643533.0710
80	Corner of Conc. Band	N 1685187.4351	E 1643474.2654
81	Corner of Conc. Band	N 1685180.2675	E 1643474.3905
82	Corner of Conc. Band	N 1685093.4238	E 1643454.6149
83	Corner of Conc. Band	N 1685090.4533	E 1643455.0345
84	Corner of Conc. Band	N 1685099.3649	E 1643534.6322
85	End Concrete Band	N 1685117.1595	E 1643534.3209
86	Corner of Sidewalk	N 1685117.2945	E 1643523.3175
87	Corner of Sidewalk	N 1685134.7336	E 1643485.7115
88	Corner of Sidewalk	N 1685153.4873	E 1643484.0619
89	Midpoint Concrete Pad	N 1685172.2513	E 1643455.3255
90	Midpoint Concrete Pad	N 1685137.6629	E 1643421.9242
91	Midpoint Concrete Pad	N 1685104.2616	E 1643456.5126
92	Begin Concrete Wall	N 1685179.4716	E 1643400.1666
93	End Concrete Wall	N 1685084.2076	E 1643402.3934
94	Center of Radius	N 1685035.9915	E 1644466.7036
95	Center of Radius	N 1685237.9978	E 1644341.3639
96	Center of Radius	N 1685061.0698	E 1644154.3352
97	Center of Radius	N 1685024.4958	E 1643950.1626
98	Center Fountain	N 1685150.7460	E 1643972.3232



HARDSCAPE PLAN

HORIZONTAL CONTROL POINTS

CP #260	SET 1/2" REBAR WITH BLUE "MERESTONE" CAP 35' EAST OF THE CENTERLINE OF OSAGE N:1685165.327 E:1645324.800
CP #111	SET 1/2" REBAR WITH BLUE "MERESTONE" CAP 26.2' SOUTH OF STORM SEWER MANHOLE, NORTH SIDE OF PEARL STREET BETWEEN HANDLEY AND WALNUT N: 1685178.703 E: 1644740.282
CP #112	1/2" IRON WITH BLUE "MERESTONE" CAP EAST SIDE OF SENECA IN PEARL STREET ROW N: 1685150.231 E:1644271.339
CP #113	1/2" IRON WITH BLUE "MERESTONE" CAP EAST SIDE OF EXPOSITION IN PEARL STREET ROW N: 1685151.637 E: 1643591.375
CP#513	FOUND "+*" CUT IN CONCRETE CENTER OF HANDLEY N: 1685122.922 E: 1644930.207
CP#516	FOUND "+*" CUT IN CONCRETE CENTER OF OSAGE N: 1685129.494 E: 1645295.362

REFERENCE

KEY	DESCRIPTION	DETAIL
1	4" PLAIN CONC. PAVING	1/SHEET 19
2	BRICK PAVERS	1/SHEET 20
3	5" PLAIN CONC. PAVING	2/SHEET 19
4	CONCRETE BAND	4/SHEET 19
5	LIMESTONE CHAT SURFACE	4/SHEET 26
6	SANDSTONE BEAM SEAT	3/SHEET 20
7	SANDSTONE BEAM WALL	2/SHEET 20
8	ENGINEERED WOOD FIBER (EWF) SURFACE	1/SHEET 22
9	5' ORNAMENTAL FENCE	1/SHEET 21
10	5' BLACK, VINYL-COATED CHAIN-LINK	2/SHEET 21
11	LIGHT BOLLARD	REF. ELEC.
12	LIGHT POLE	REF. ELEC.
13	LONGHORN SCULPTURE FOUNDATION	SHEET 25
14	BICYCLE RACK	3/SHEET 25
15	TRASH RECEPTACLE	2/SHEET 25
16	PARK PORCH SWING	4/SHEET 25
17	BENCH - BACKLESS	1/SHEET 25
18	PET WASTE STATION	3/SHEET 26
19	DOG DISH FOUNTAIN	1/SHEET 26
20	BICYCLE REPAIR STATION	2/SHEET 26
21	DOG PARK SIGNAGE	6/SHEET 26
22	DOG PARK GATE	3/SHEET 21
23	6' CHAIN-LINK FENCE	1/SHEET 24
24	6' PRECAST CONCRETE SCREEN WALL	5/SHEET 26
25	CONCRETE RETAINING WALL	2/SHEET 24

245 NORTH WACO
SUITE 222
WICHITA, KANSAS 67202
PHONE: 316-303-3000
FAX: 316-462-5629

CONSULTANTS:

LK ARCHITECTURE, INC.
345 RIVERVIEW
SUITE 200
WICHITA, KANSAS 67208
PHONE: 316-268-0230

DELANO GREENWAY IMPROVEMENTS
FROM EXPOSITION TO OSAGE STREET

WICHITA, KANSAS

PROJ NO: 472-85463
SCALE: 1" = 10'-0"
DATE: 09/30/2022
DESIGNED BY: J. Best
DRAWN BY: J. Best
CHECKED BY: J. Best

SHEET TITLE:
HARDSCAPE PLAN

SHEET NO.
23