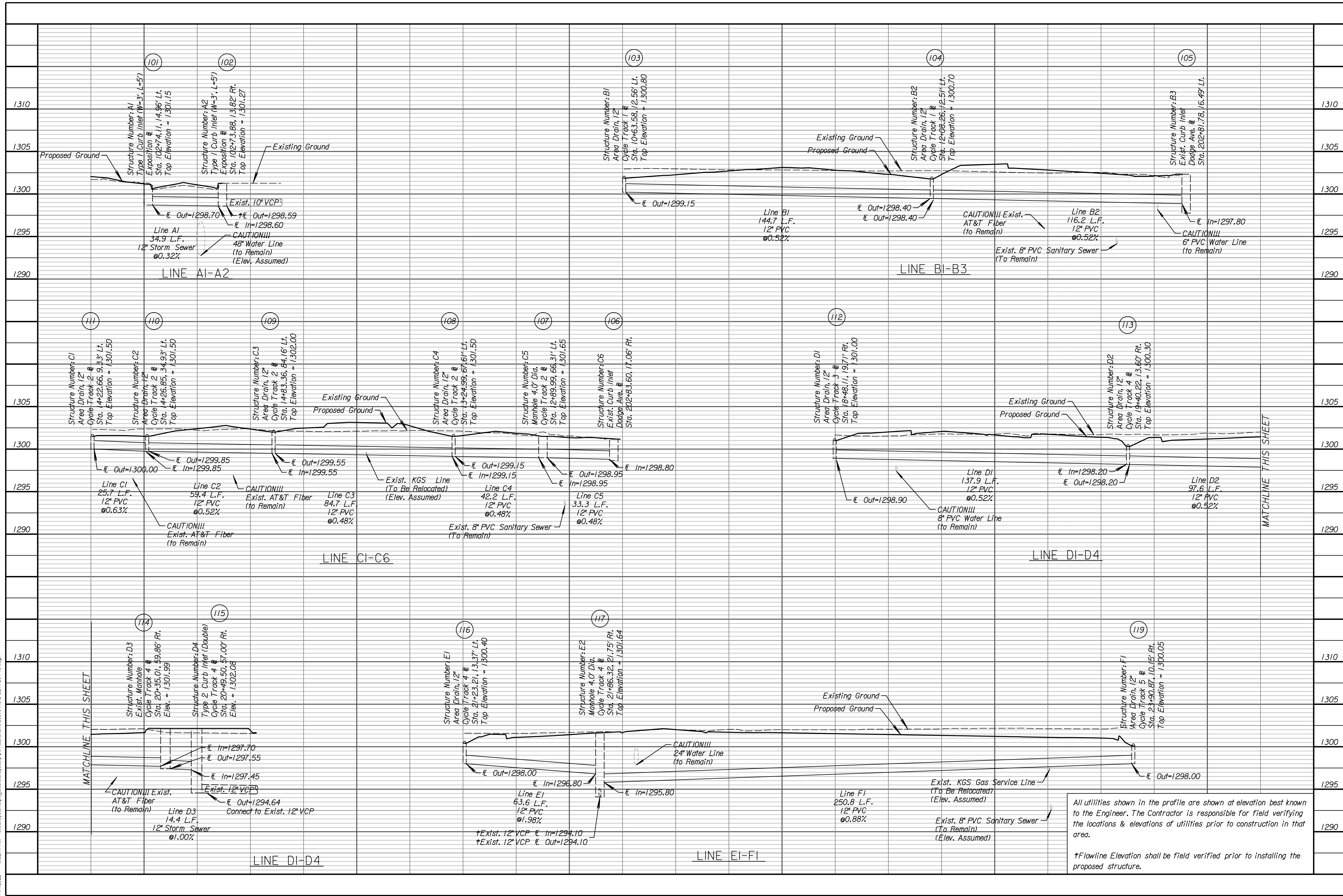


danawaro 11/11/2022 9:52:47 AM - c:\transystems\work\delanogreenway\delanogreenway.dwg 143:IC-SDR-G01-10.dgn



All utilities shown in the profile are shown at elevation best known to the Engineer. The Contractor is responsible for field verifying the locations & elevations of utilities prior to construction in that area.

*Flowline Elevation shall be field verified prior to installing the proposed structure.

Tran Systems
 245 NORTH WACO
 SUITE 222
 WICHITA, KANSAS 67202
 PHONE: 316-303-3000
 FAX: 316-462-5629

CONSULTANTS:

 LK ARCHITECTURE, INC.
 345 RIVERVIEW
 SUITE 200
 WICHITA, KANSAS 67208
 PHONE: 316-268-0230

DELANO GREENWAY IMPROVEMENTS FROM EXPOSITION TO OSAGE
 WICHITA, KANSAS

 CITY OF WICHITA

REVISIONS:	MARK	DATE	DESCRIPTION

PROJ NO: 472-85462
 SCALE: 1"=20'
 DATE: 11/11/2022
 DESIGNED BY: MCG
 DRAWN BY: MCG
 CHECKED BY: MDB

SHEET TITLE:
 DELANO GREENWAY STORM SEWER PROFILES

SHEET NO.
 41
 SHEET 41 OF 96