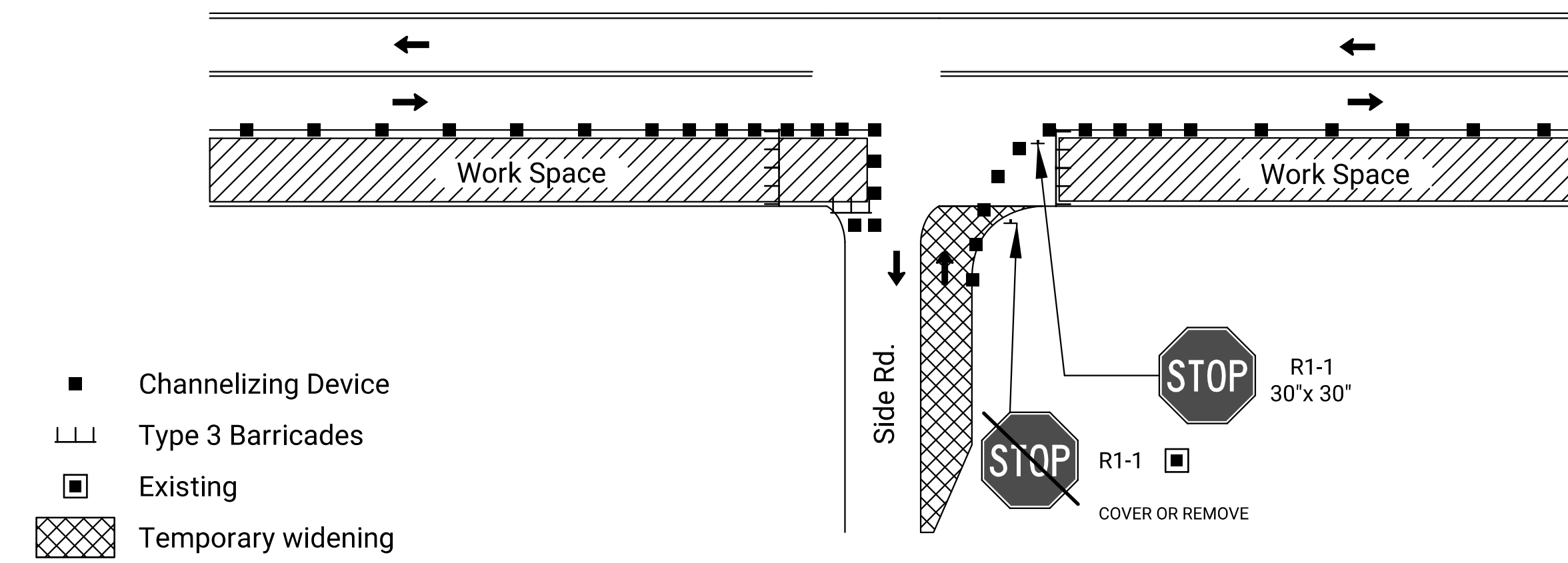
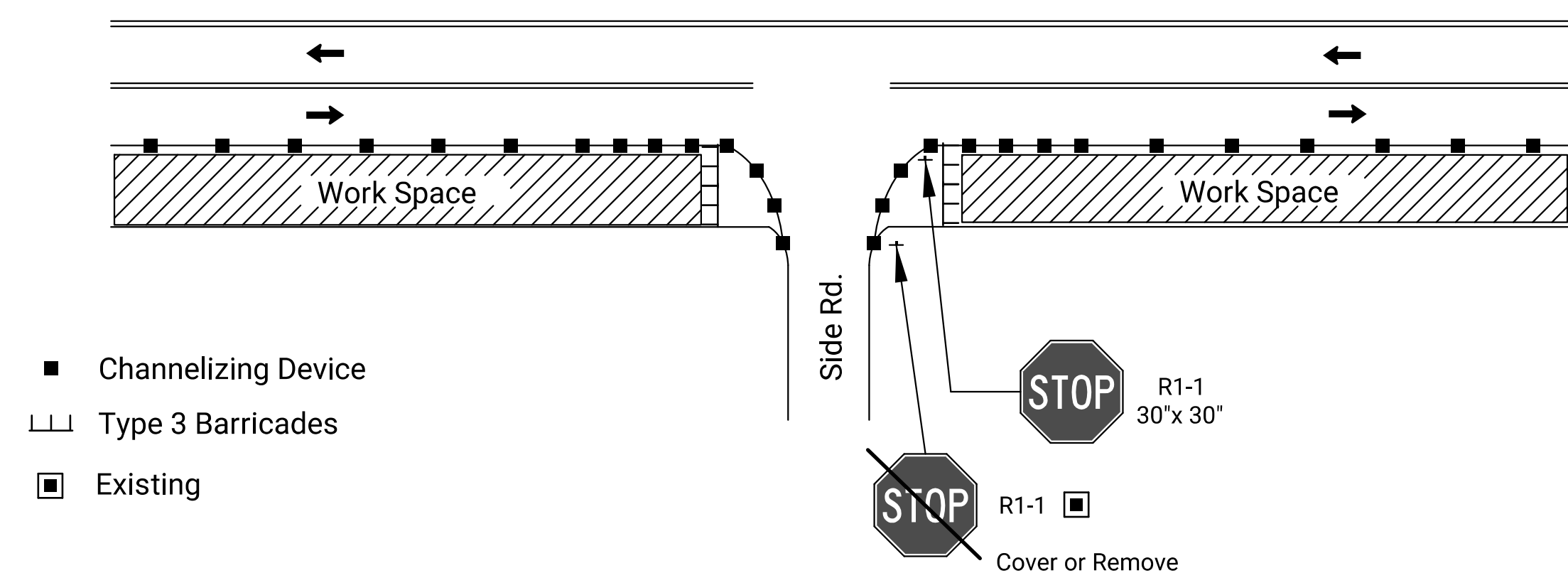


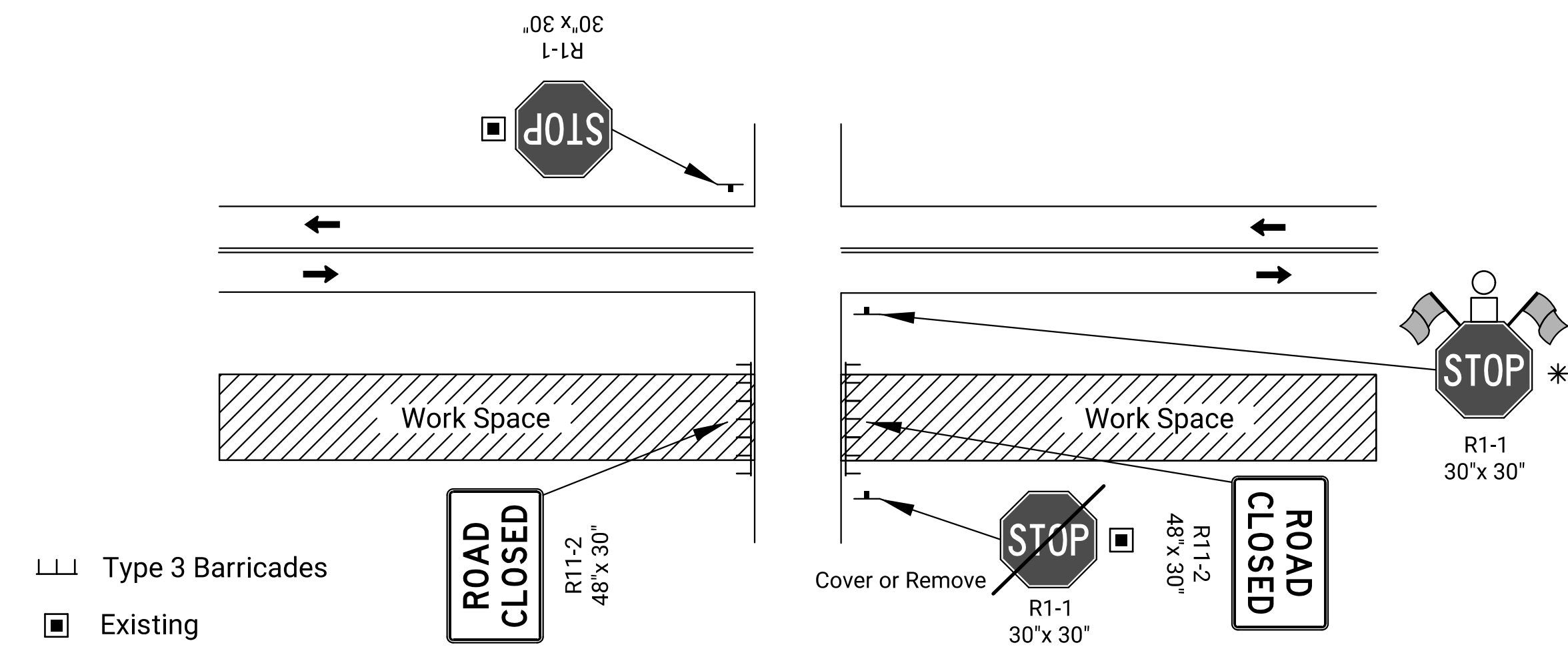
**FIGURE 1: SIDE ROAD OR ENTRANCE CLOSED THROUGH WORK AREA**



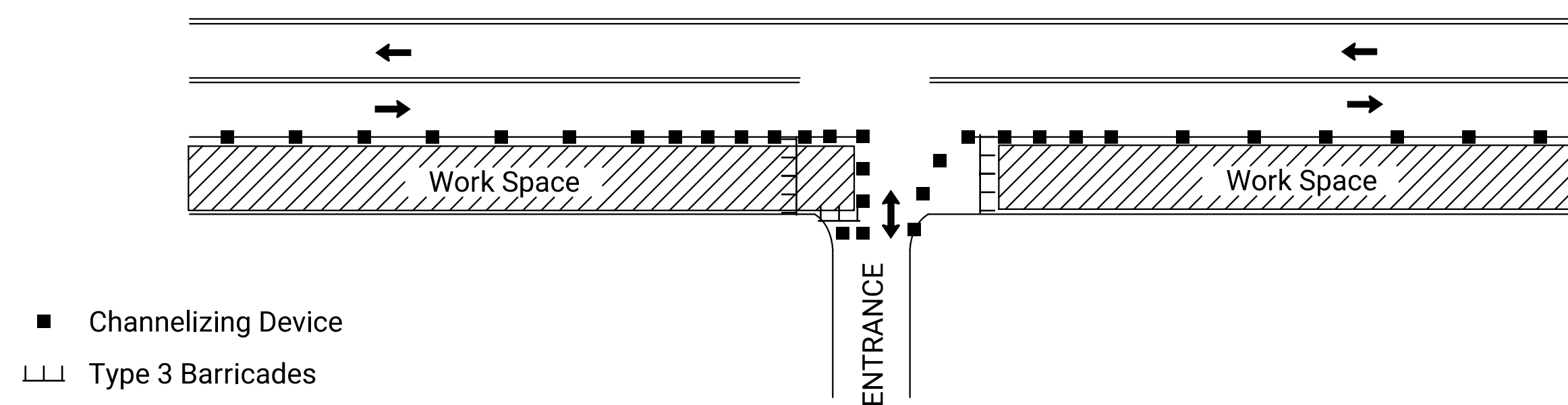
**FIGURE 4: SIDE ROAD OR ENTRANCE CONSTRUCTED HALF AT A TIME: TWO WAY TRAFFIC REQUIRED**



**FIGURE 2: SIDE ROAD OR ENTRANCE OPEN THROUGH WORK AREA**



**FIGURE 5: SIDE ROAD OPEN THROUGH WORK AREA ON DIVIDED ROADWAY**



**FIGURE 3: LOW VOLUME ENTRANCE CONSTRUCTED HALF AT A TIME**

Note: Consider large vehicles making right turns into and out of entrance and use figure 4 as needed

NO.	DATE	REVISIONS	BY	APPD
KANSAS DEPARTMENT OF TRANSPORTATION				
<b>TRAFFIC CONTROL ACCESS THROUGH THE WORK AREA</b>				
TE705				
DESIGNED	R.W.B.	06-01-15	APPD.	Kristina Erickson
DESIGN CK.	DETAIL CK.	QUANTITIES	TRACED	
		QUAN.CK.	TRACE CK.	