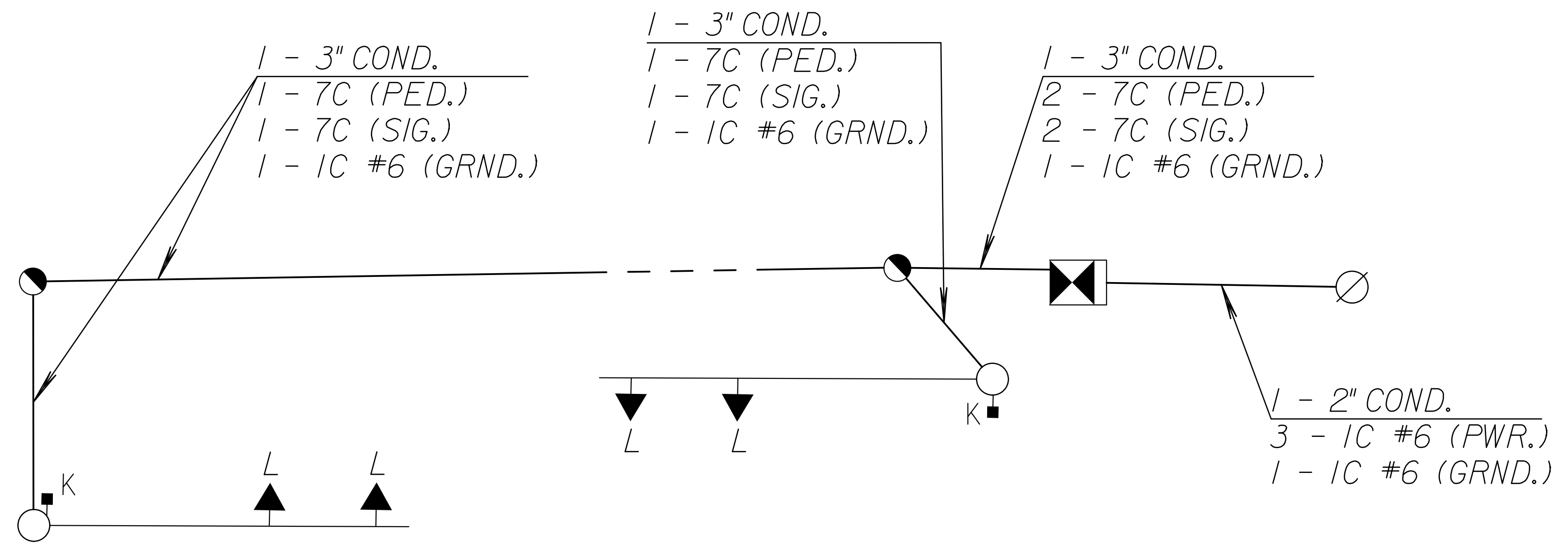


NOTES

1. ALL WIRES SHALL BE AWG #14 UNLESS SPECIFIED OTHERWISE.
2. 1C GROUND WIRE SHALL BE #6 AWG GREEN SOLID COPPER WIRE IN ACCORDANCE WITH ASTM B-3. GROUND WIRE SHALL CONNECT TO EACH GROUND ROD AT EVERY POLE, SERVICE BOX, AND CONTROLLER CABINET TO FORM ONE CONTINUOUS GROUND CIRCUIT.
3. ALL PEDESTALS, SERVICE BOXES AND POLES SHALL BE EQUIPPED WITH GROUND ROD. GROUND WIRE SHALL BE ATTACHED TO EACH ROD.
4. IN NO CASE SHALL MORE THAN 60% OF ANY CONDUIT BE FILLED.



EMERGENCY FLASH

PHASE	INDICATION
2	Red
4	Red
6	Red
8	Red
Pedestrian	Dark

Tran Systems
 245 NORTH WACO
 SUITE 222
 WICHITA, KANSAS 67202
 PHONE: 316-303-3000
 FAX: 316-462-5629

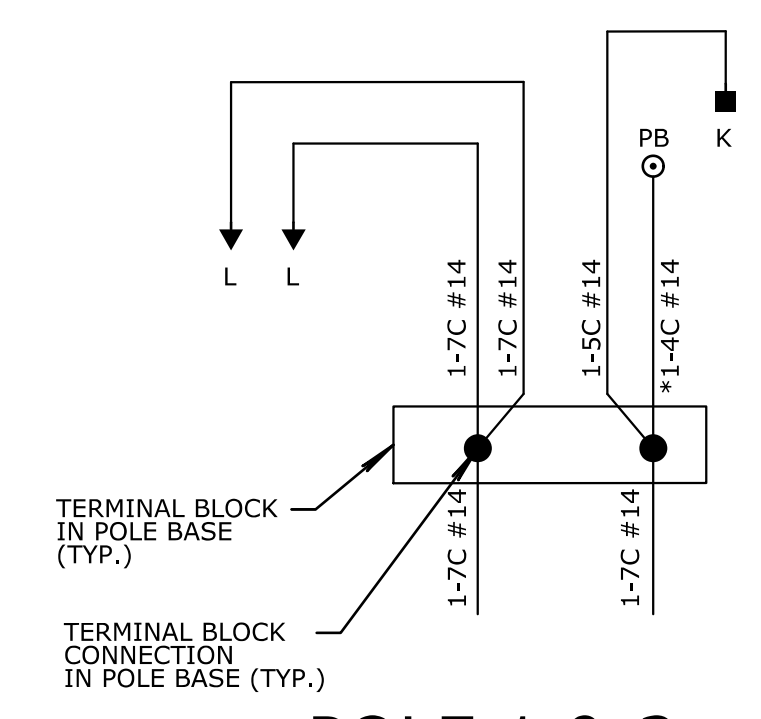
CONSULTANTS:

 LK ARCHITECTURE, INC.
 345 RIVERVIEW
 SUITE 200
 WICHITA, KANSAS 67208
 PHONE: 316-268-0230

DELANO GREENWAY IMPROVEMENTS
 FROM EXPOSITION TO OSAGE
 WICHITA, KANSAS

 CITY OF
 WICHITA

POLE WIRING DIAGRAM



POLE 1 & 2

*4-C FROM PEDESTRIAN SIGNAL HEAD (K) TO ADA PUSHBUTTON

LEGEND

- | | |
|-------------|-----------------------------------------|
| COND. | CONDUIT |
| SIG. | SIGNAL CABLE |
| PED. | PEDESTRIAN SIGNAL CABLE |
| DET. | DETECTOR LEAD-IN CABLE |
| ST. LT. | STREET LIGHTING CABLE |
| GRND. | WIRE FOR POLE GROUND |
| COAX. | COAXIAL CABLE |
| FUT. | FUTURE CABLE |
| VIDEO-RADAR | VIDEO-RADAR POWER & COMMUNICATION CABLE |
| HLD. LT. | HOLIDAY LIGHTING CABLE |

REVISIONS:	MARK	DATE	DESCRIPTION

PROJ NO: 472-85462
 SCALE: 1"=20'
 DATE: 11/1/2022
 DESIGNED BY: SGE
 DRAWN BY: SGE
 CHECKED BY: SSP

SHEET TITLE:
 DELANO PATH
 SENECA STREET
 TRAFFIC SIGNAL
 WIRING DIAGRAM

SHEET NO.
 83
 SHEET 83 OF 96