

LIGHTING FIXTURE SCHEDULE

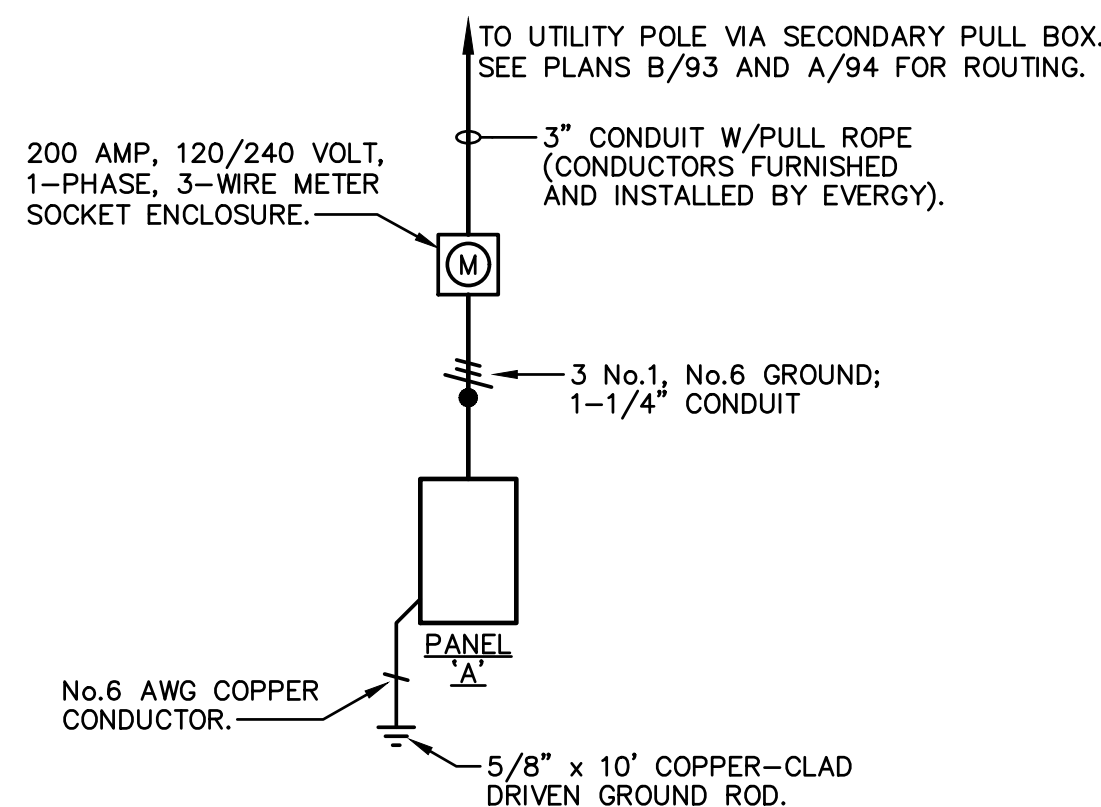
LETTER DESIG.	MANUFACTURER	CATALOG NUMBER	VOLTAGE	LAMPS		MOUNTING	FINISH TRIM	TOTAL VA	REMARKS
				NO.	TYPE				
A	STERNBERG	PT-1760LED-DR-R4-1L40T5-MDL16-CA-SV2C-BKT	120	-	L.E.D.'S W/UNIT	14' POLE - SEE DETAIL A/95	BLACK TEXTURED	100	
B	STERNBERG	PT-1760LED-DR-R4-1L40T4-MDL16-CA-SV2C-BKT	120	-	L.E.D.'S W/UNIT	14' POLE - SEE DETAIL A/95	BLACK TEXTURED	100	
C	STERNBERG	PT-1760LED-DR-R4-1L40T2-MDL16-CA-SV2C-BKT	120	-	L.E.D.'S W/UNIT	14' POLE - SEE DETAIL A/95	BLACK TEXTURED	100	
D	STERNBERG	PT-1760LED-DR-R4-1L40T5-MDL16-CA-SV2C-BKT	120	-	L.E.D.'S W/UNIT	12' POLE - SEE DETAIL B/95	BLACK TEXTURED	100	
F	STERNBERG	PT-1760LED-DR-R4-1L40T2-MDL16-CA-SV2C-BKT	120	-	L.E.D.'S W/UNIT	12' POLE - SEE DETAIL B/95	BLACK TEXTURED	100	
G	LIGMAN	USM-10693-33W-W40-01-120/277V	120	-	L.E.D.'S W/UNIT	CONCRETE BASE - SEE DETAIL C/95	BLACK	40	
H	KIM	LTV82-HS-SP-18L-4K-UV-RCA82	120-240	-	L.E.D.'S W/UNIT	CONCRETE BASE - SEE DETAIL D/95	BRONZE	25	

SYMBOL LIST

SYMB.	DESCRIPTION	MOUNTING OR AS INDICATED
(A)	LIGHT FIXTURE WITH LETTER DESIGNATION	POLE OR BASE
(A)→	LIGHT FIXTURE WITH LETTER DESIGNATION	POLE
⊖	GFCI DUPLEX RECEPTACLE	WALL - 46" AFF
□	SPECIAL DEVICE (AS NOTED)	
—/—	'HOME RUN' W/2 HOTS & 1 GROUND	EARTH
—/—/—	CONDUIT RUN W/1 HOT, NEUTRAL & GROUND	EARTH
—/—/—	CONDUIT TERMINATION	EARTH
AFG	ABOVE FINISHED GRADE	
C.	CONDUIT	
GRD.	GROUND	
GFCI	GROUND FAULT CIRCUIT INTERRUPTER	
U.O.N.	UNLESS OTHERWISE NOTED	
WP	WEATHER PROOF	

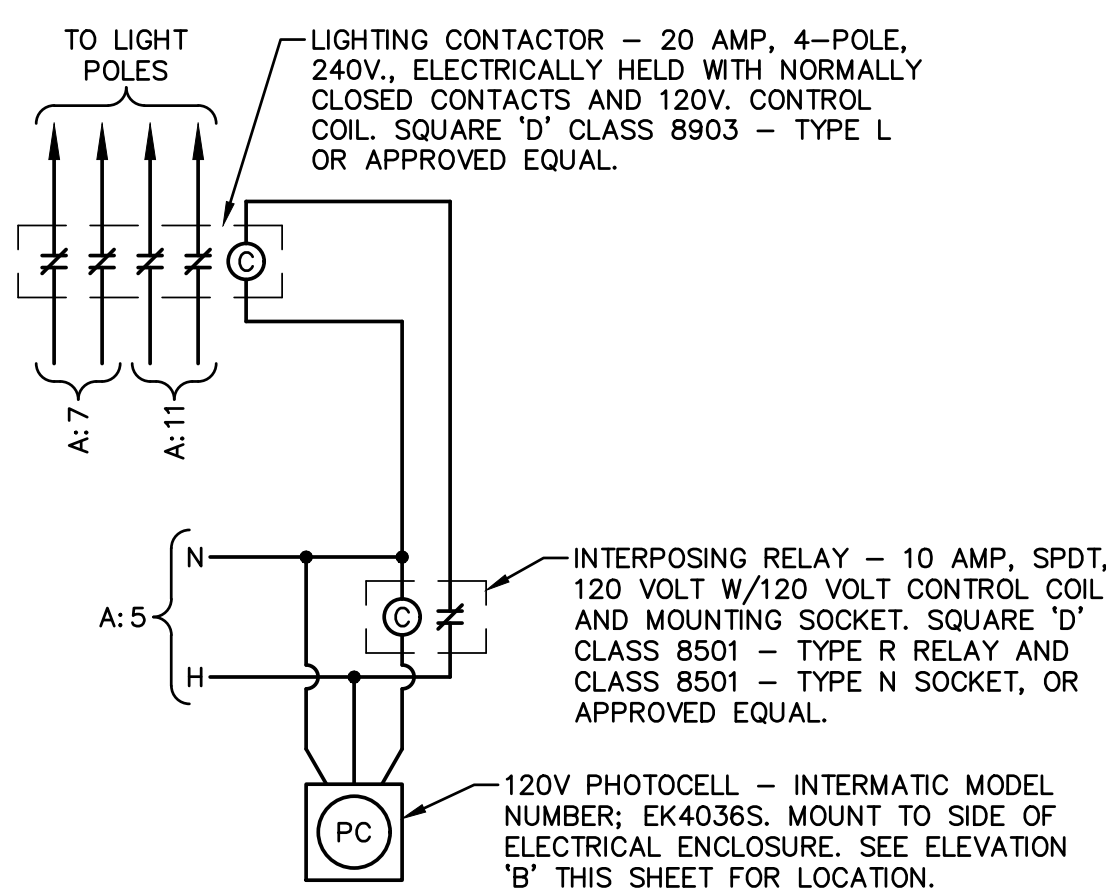
KEY NOTES:

- ① LIGHT FIXTURE WITH ASYMMETRICAL LIGHT DISTRIBUTION PATTERN. ARROW INDICATES AIMING DIRECTION FOR CENTER OF 'STREET SIDE' OF PATTERN.



A ONE-LINE DIAGRAM

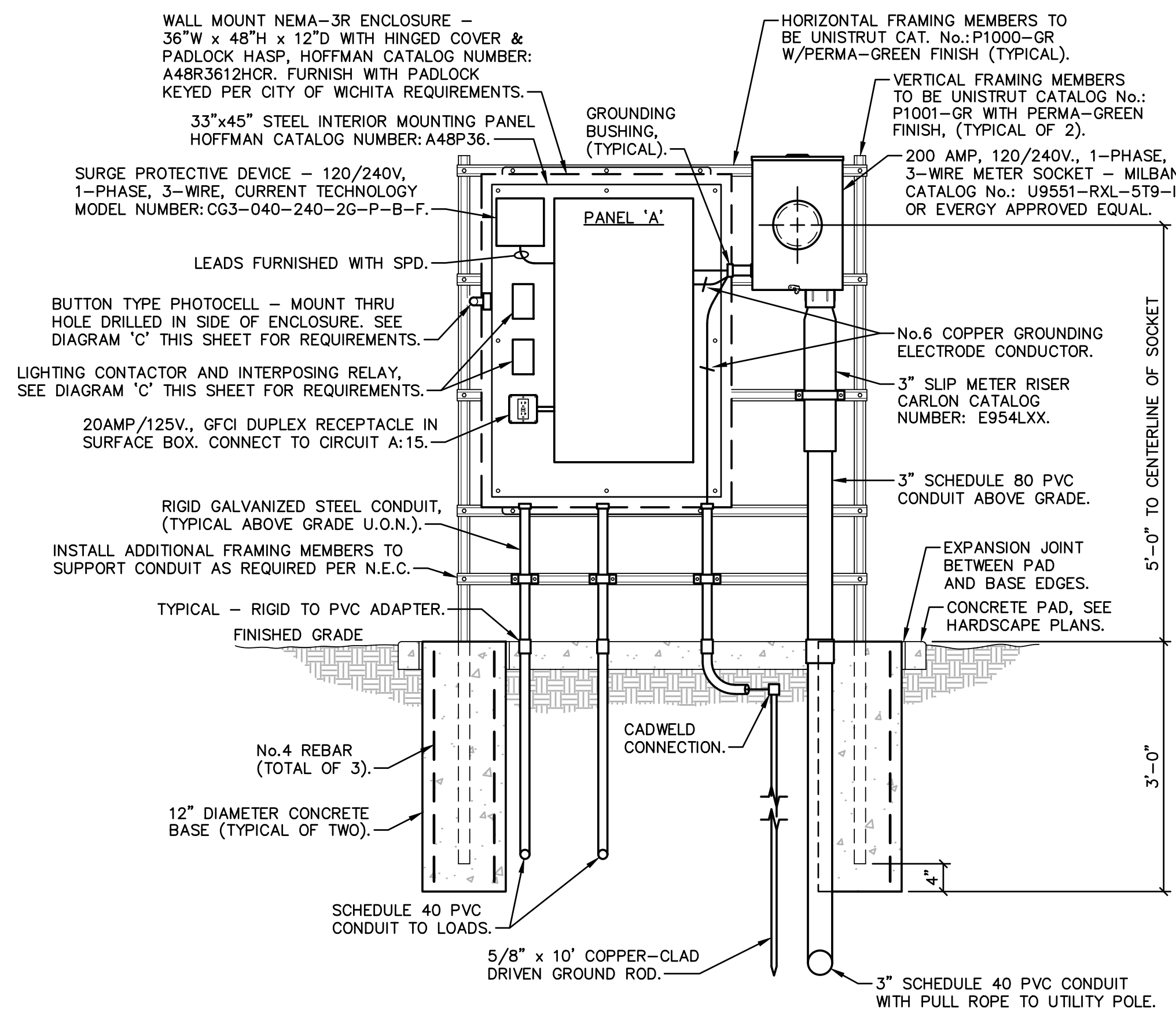
N.T.S.



NOTE: CONTACTOR & RELAY TO BE MOUNTED IN ENCLOSURE ADJACENT TO PANEL 'A', SEE ELEVATION 'B' THIS SHEET FOR LOCATION.

C LIGHTING CONTROL DIAGRAM

N.T.S.



NOTES:

- FRAMING MEMBERS AND EQUIPMENT SHALL BE FASTENED TOGETHER USING UNISTRUT CHANNEL NUTS AND SCREWS.
- ALL ENCLOSURES, EXPOSED CONDUIT AND FRAMING MEMBERS TO BE PAINTED BLACK.
- SERVICE INSTALLATION REQUIREMENTS TO CONFORM WITH UTILITY COMPANY STANDARDS.

B ELECTRIC METER & PANEL "A" ELEVATION

N.T.S.

WITH GROUND BUS, SERVICE ENTRANCE RATING AND NEMA-1 ENCLOSURE		PANEL A		S.C. RATING 10,000 AIC.			
TYPE NQ		120/240 V 1 Ø 3 W, SN		SURFACE MOUNTED 100 AMP. MAIN C.B.			
CKT No.	DESCRIPTION	KVA	AMP	AMP	KVA	DESCRIPTION	CKT No.
1	SURGE PROTECTIVE DEVICE	-	30	40	1.9	TRAFFIC SIGNAL CONTROLLER	2
3							4
5	LIGHTING CONTROL CIRCUIT	.1	20	20	-	SPARE	6
7	WEST LIGHT POLES #19-35 AND SCULPTURE LIGHTING	1.8	20	20	-	SPARE	8
9							10
11	EAST LIGHT POLES #1-18	1.8	20	20	-	SPARE	12
13							14
15	RECEPTACLE	.2	20	-	-	SPACE ONLY	16
17	SPACE ONLY	-	-	-	-	SPACE ONLY	18

LOAD SUMMARY			
LOAD DESCRIPTION	CONNECTED LOAD KVA	DEMAND FACTOR	DEMAND LOAD KVA
LIGHTS	3.7	1.25	4.6
RECEPTACLES	0.4	1.00	0.4
TRAFFIC SIGNAL EQUIPMENT	1.7	1.25	2.1
TOTAL:	5.8		7.1

7.1 kVA x 1000 / 240 = 30 WIRE SIZE AMPS
MAIN CIRCUIT BREAKER RATING = 100 AMPS

KEY NOTES:

- ① CIRCUIT TO BE CONNECTED TO LIGHTING CONTACTOR. SEE DIAGRAM 'C' THIS SHEET.

GENERAL NOTES:

- ALL RACEWAYS TO BE 1" TRADE SIZE MINIMUM UNLESS OTHERWISE NOTED ON DRAWINGS.
- MINIMUM CONDUCTOR SIZE TO BE No.10 AWG.
- REPAIR OF ANY UTILITIES DAMAGED DURING CONSTRUCTION SHALL BE THE RESPONSIBILITY OF THIS CONTRACTOR INCLUDING ALL MATERIALS, LABOR AND UTILITY COMPANY FEES. REPAIRS SHALL HAVE WRITTEN APPROVAL OF RESPECTIVE UTILITY COMPANY PRIOR TO BEING BACK-FILLED.
- POLE NUMBER INDICATED ON ELECTRICAL PLANS SHALL BE PAINTED ON HAND-HOLE COVER OF EACH POLE. NUMERALS TO BE WHITE IN COLOR, 1" TALL AND PAINTED USING STENCILS. DECALS ARE NOT PERMITTED.
- CONTRACTOR SHALL PROVIDE ALL TRENCHING AND BORING REQUIRED FOR INSTALLATION OF UNDERGROUND ELECTRICAL RACEWAYS.
- REFERENCE CIVIL DRAWINGS AND SPECIFICATIONS FOR TRENCHING AND BACKFILL REQUIREMENTS.
- CONDUITS INSTALLED BELOW EXISTING PAVED AND HARDSCAPED AREAS THAT ARE NOT BEING DISTURBED AS PART OF THIS PROJECT SHALL BE BORED.
- ALL RACEWAYS INSTALLED BELOW GRADE TO BE PVC SCHEDULE 40. MINIMUM BURIAL DEPTH TO BE 30" BELOW FINISHED GRADE/PAVING UNLESS NOTED OTHERWISE ON THE DRAWINGS.
- ALL RACEWAY ELBOWS FOR UTILITY SERVICES SHALL BE SWEEP ELLS.
- CONTRACTOR SHALL COORDINATE AND PROVIDE ALL NECESSARY MATERIALS AND INSTALLATIONS FOR ELECTRICAL SERVICES AS REQUIRED BY THE UTILITY COMPANY. FAILURE TO COORDINATE REQUIREMENTS WILL NOT RESULT IN ADDITIONAL COMPENSATION TO THE CONTRACTOR.
- ELECTRIC UTILITY CONTACT: EVERGY MR. SHANE PRICE PHONE: (316) 261-6315

Tran Systems

245 NORTH WACO
SUITE 222
WICHITA, KANSAS 67202
PHONE: 316-303-3000
FAX: 316-462-5629

CONSULTANTS:

LK ARCHITECTURE, INC.
345 RIVERVIEW
SUITE 200
WICHITA, KANSAS 67208
PHONE: 316-268-0230

DELANO PATH IMPROVEMENTS
FROM OAK STREET TO EXPOSITION
WICHITA, KANSAS

CITY OF WICHITA

REVISIONS:	DESCRIPTION	DATE	MARK

PROJ NO: 472-85463
SCALE: 1" = 20'-0"
DATE: 09/30/2022
DESIGNED BY: S. Tucker
DRAWN BY: S. Tucker
CHECKED BY:
SHEET TITLE:
SYMBOL LIST, SCHEDULES AND DETAILS
SHEET NO.
92
SHEET OF