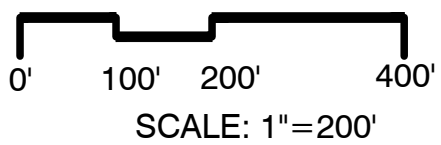
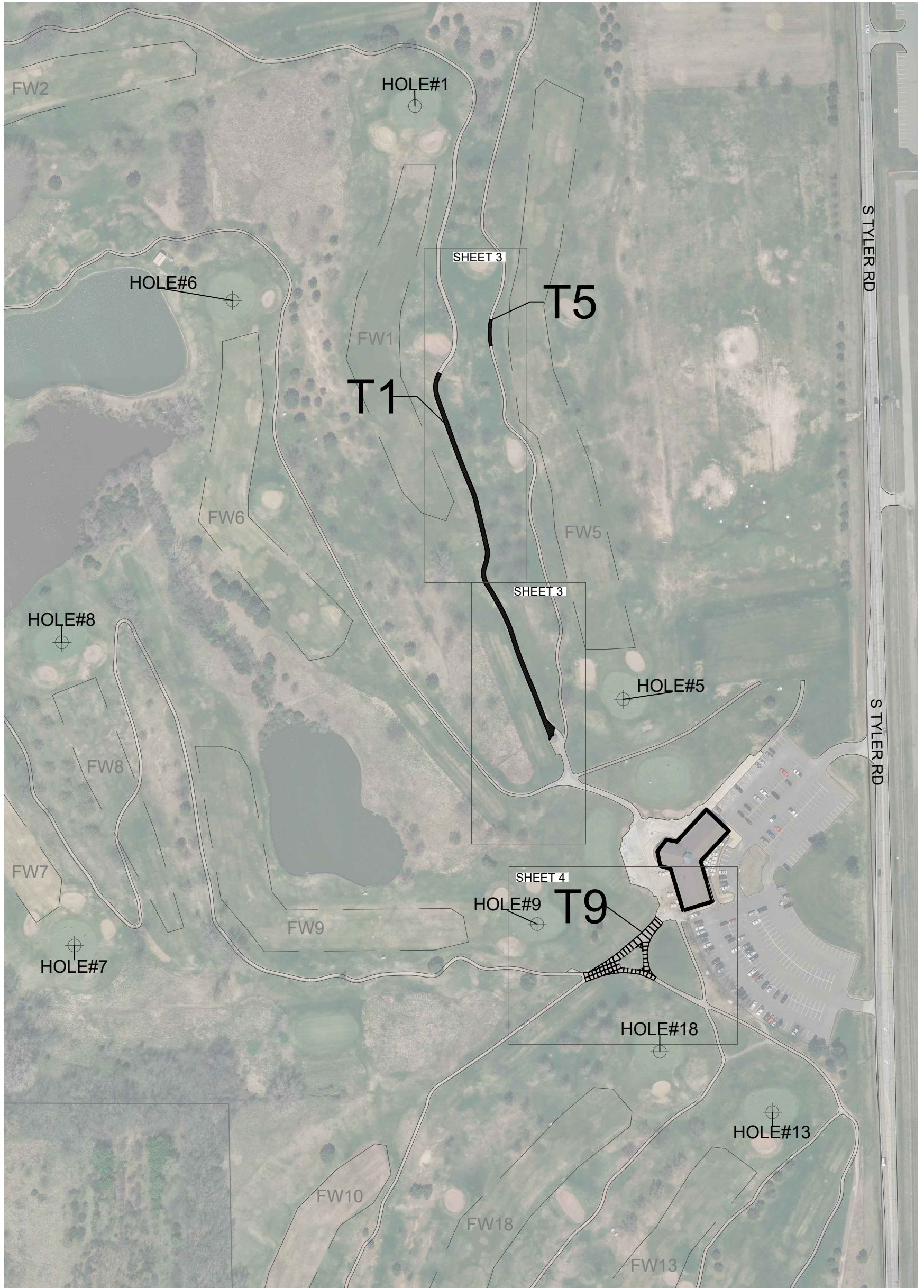


TEX CONSOLVER GOLF COURSE
 TOTAL AREAS IN SF: 12,872



CITY OF
WICHITA

PUBLIC WORKS & UTILITIES
ENGINEERING DIVISION

TEX, SIM, MAC GOLF COURSE PATHWAY IMPROVEMENTS CITY ENGINEER PAUL GUNZELMAN		
PROJECT NUMBER	OCA NUMBER	DATE
XXX	XXX	1/31/2024
CITY ENGINEER'S OFFICE CITY HALL - SEVENTH FLOOR 455 NORTH MAIN STREET WICHITA, KANSAS 67202-1620 (316) 268-4501		SHEET 1 OF 14

TEX CONSOLVER GOLF COURSE
 TOTAL AREAS IN SF: 12,872



TEX, SIM, MAC GOLF COURSE PATHWAY IMPROVEMENTS

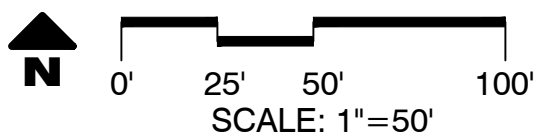
CITY ENGINEER
PAUL GUNZELMAN

PROJECT NUMBER	OCA NUMBER	DATE
XXX	XXX	1/31/2024

CITY ENGINEER'S OFFICE
 CITY HALL - SEVENTH FLOOR
 455 NORTH MAIN STREET
 WICHITA, KANSAS 67202-1620
 (316) 268-4501

SHEET

2 OF 14



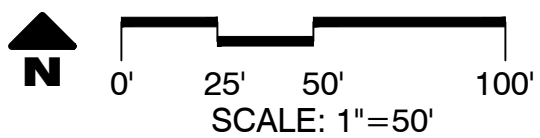
TEX CONSOLVER GOLF COURSE
 TOTAL AREAS IN SF: 12,872



TEX, SIM, MAC GOLF COURSES PATHWAY IMPROVEMENTS <small>CITY ENGINEER</small> PAUL GUNZELMAN		
<small>PROJECT NUMBER</small> XXX	<small>OCA NUMBER</small> XXX	<small>DATE</small> 1/31/2024
<small>CITY ENGINEER'S OFFICE</small> CITY HALL - SEVENTH FLOOR 455 NORTH MAIN STREET WICHITA, KANSAS 67202-1620 (316) 268-4501		<small>SHEET</small> 3 OF 14

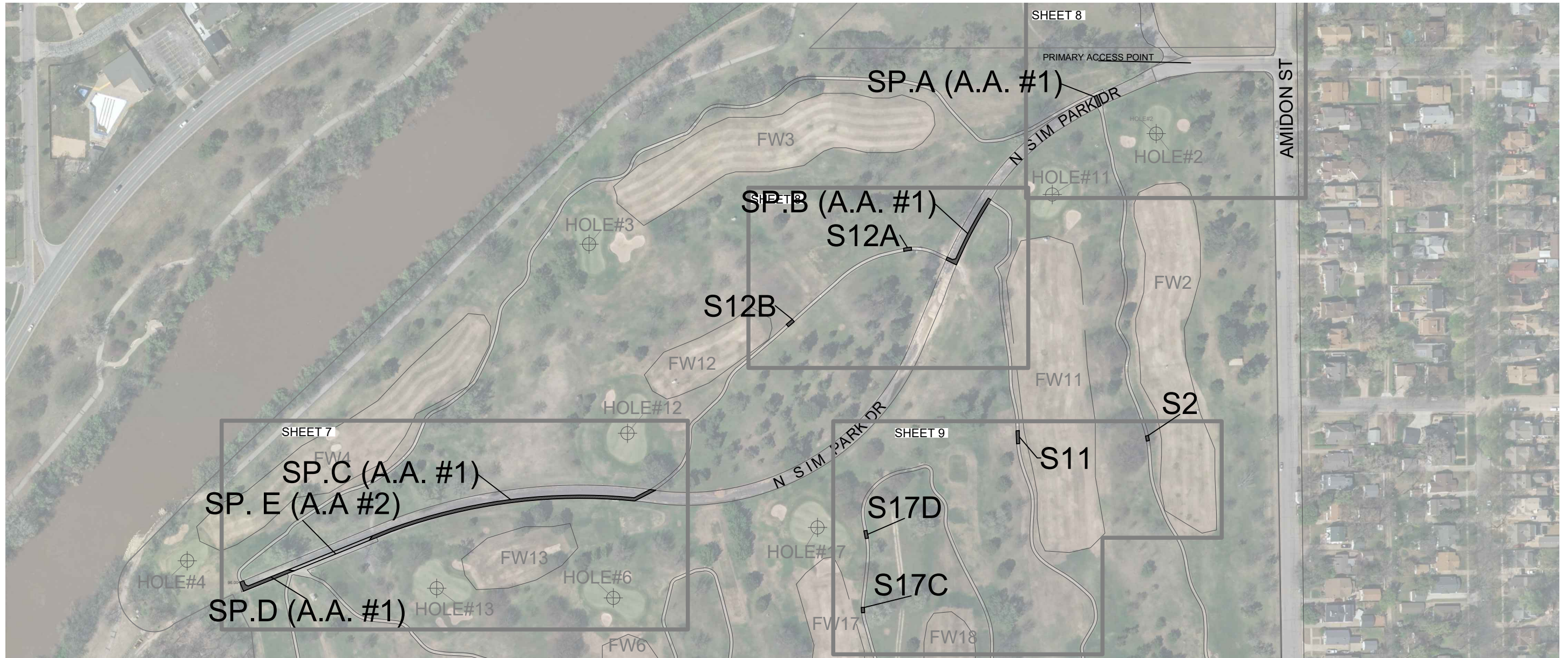


TEX CONSOLVER GOLF COURSE
 TOTAL AREAS IN SF: 12,872



TEX, SIM, MAC GOLF COURSES PATHWAY IMPROVEMENTS CITY ENGINEER PAUL GUNZELMAN		
PROJECT NUMBER XXX	OCA NUMBER XXX	DATE 1/31/2024
CITY ENGINEER'S OFFICE CITY HALL - SEVENTH FLOOR 455 NORTH MAIN STREET WICHITA, KANSAS 67202-1620 (316) 268-4501		SHEET 4 OF 14

ARTHUR B. SIM GOLF COURSE
 TOTAL AREAS IN SF: 1,143

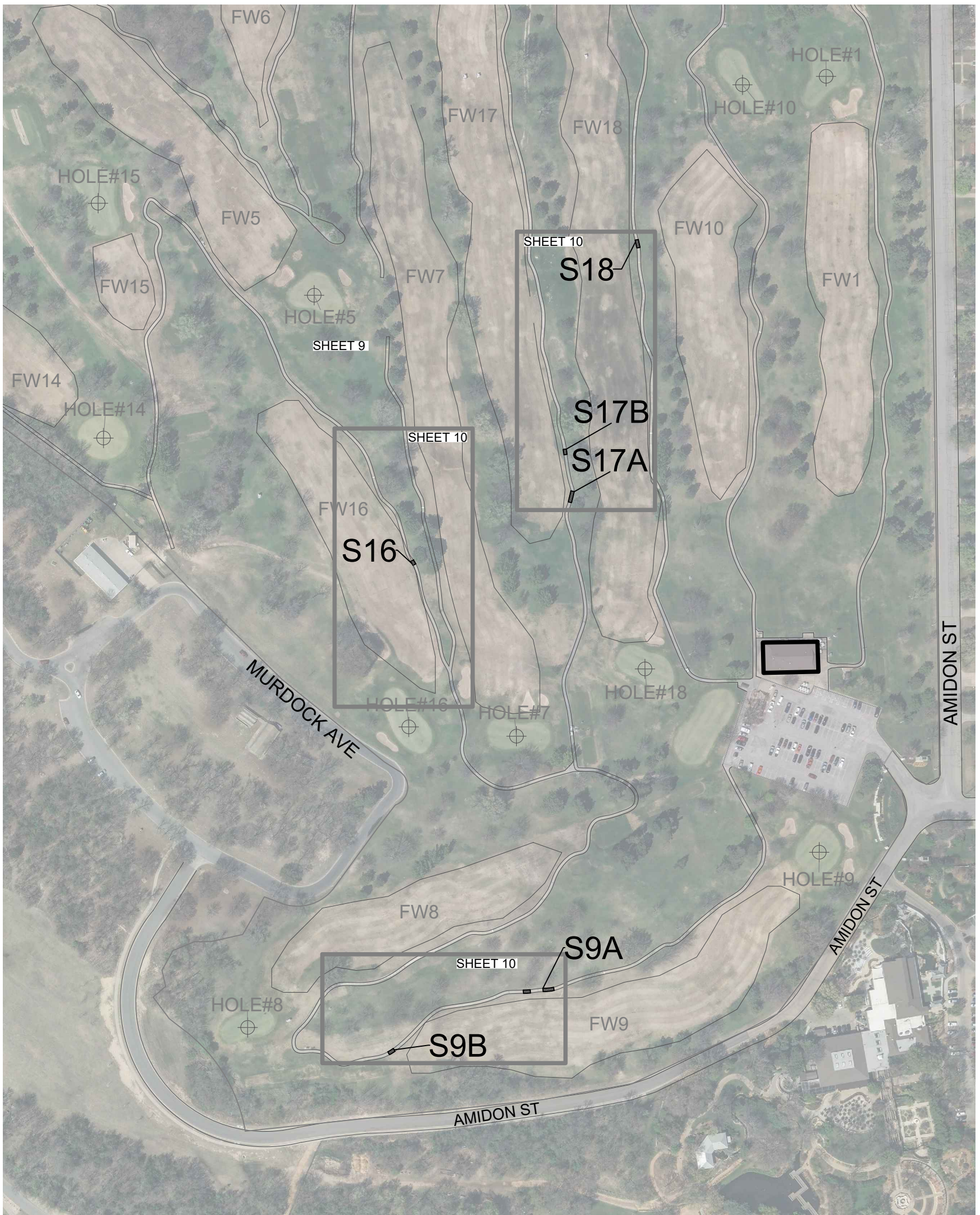


CITY OF
WICHITA

PUBLIC WORKS & UTILITIES
 ENGINEERING DIVISION

TEX, SIM, MAC GOLF COURSES PATHWAY IMPROVEMENTS		
CITY ENGINEER PAUL GUNZELMAN		
PROJECT NUMBER XXX	OCA NUMBER XXX	DATE 1/31/2024
CITY ENGINEER'S OFFICE CITY HALL - SEVENTH FLOOR 455 NORTH MAIN STREET WICHITA, KANSAS 67202-1620 (316) 268-4501		SHEET 5 OF 14

ARTHUR B. SIM GOLF COURSE
 TOTAL AREAS IN SF: 1,143



CITY OF WICHITA
 PUBLIC WORKS & UTILITIES
 ENGINEERING DIVISION

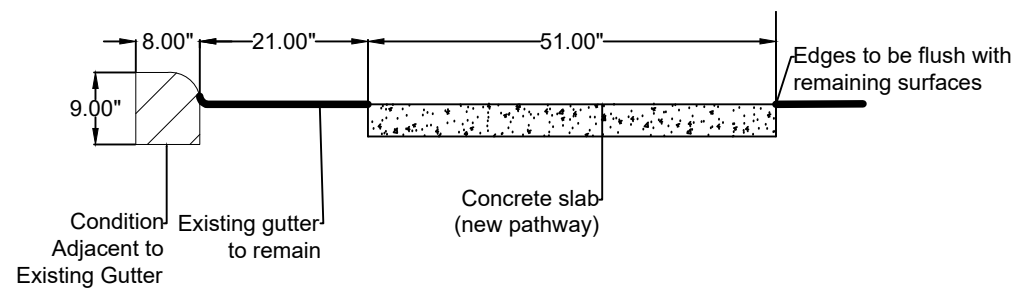
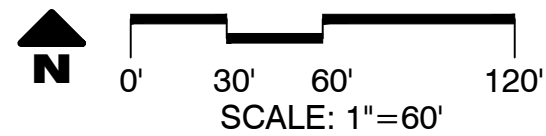
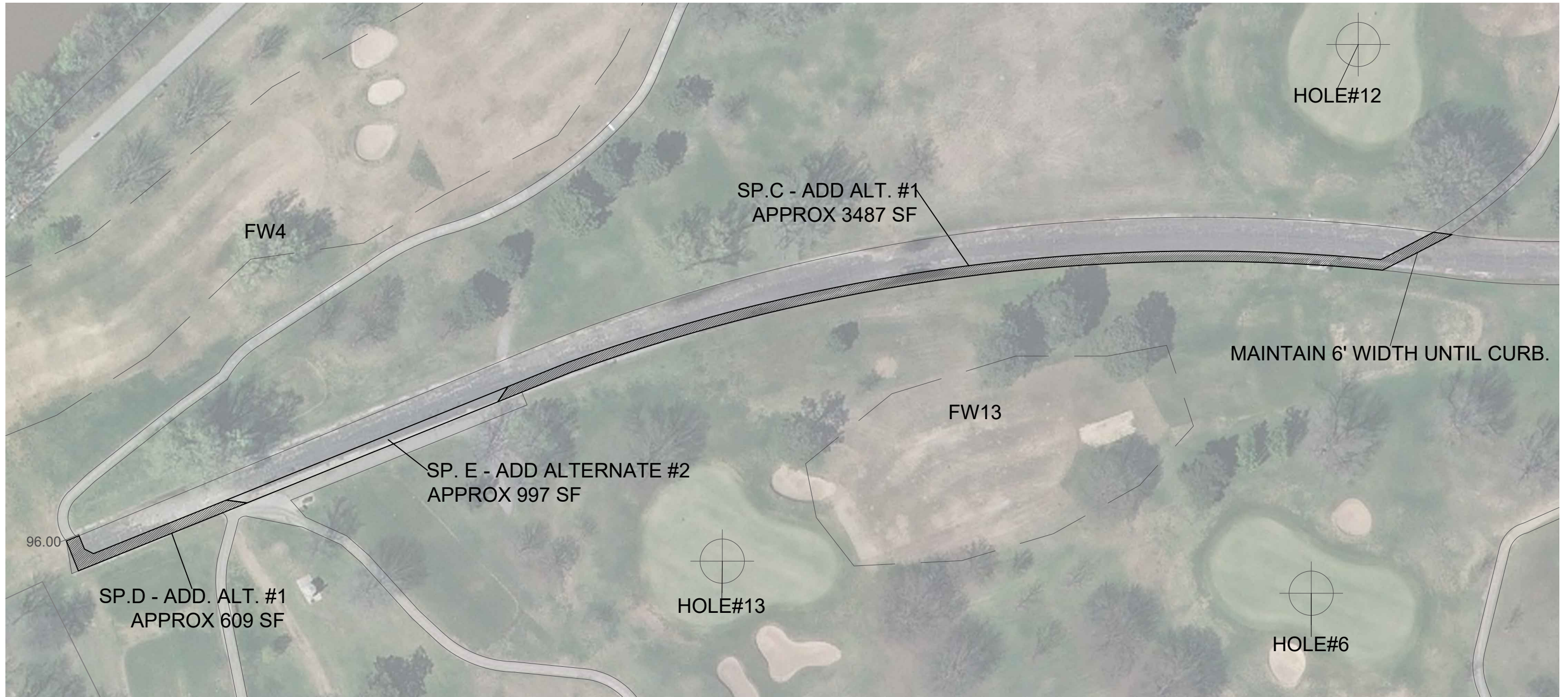
TEX. SIM, MAC GOLF COURSE PATHWAY IMPROVEMENTS

CITY ENGINEER
PAUL GUNZELMAN

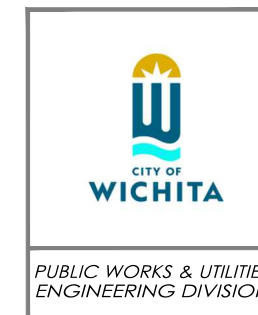
PROJECT NUMBER	OCA NUMBER	DATE
XXX	XXX	1/31/2024

CITY ENGINEER'S OFFICE
 CITY HALL - SEVENTH FLOOR
 455 NORTH MAIN STREET
 WICHITA, KANSAS 67202-1620
 (316) 268-4501

SHEET
6 OF 14



ARTHUR B. SIM GOLF COURSE
TOTAL AREAS IN SF: 1,143



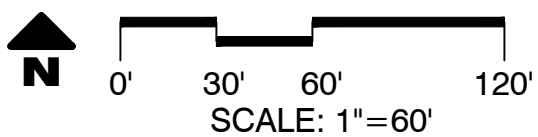
TEX, SIM, MAC GOLF COURSES PATHWAY IMPROVEMENTS

CITY ENGINEER
PAUL GUNZELMAN

PROJECT NUMBER	OCA NUMBER	DATE
XXX	XXX	1/31/2024

CITY ENGINEER'S OFFICE
CITY HALL - SEVENTH FLOOR
455 NORTH MAIN STREET
WICHITA, KANSAS 67202-1620
(316) 268-4501

SHEET
7 OF 14



ARTHUR B. SIM GOLF COURSE
TOTAL AREAS IN SF: 1,143



TEX. SIM, MAC GOLF COURSES PATHWAY IMPROVEMENTS

CITY ENGINEER
PAUL GUNZELMAN

PROJECT NUMBER	OCA NUMBER	DATE
XXX	XXX	1/31/2024

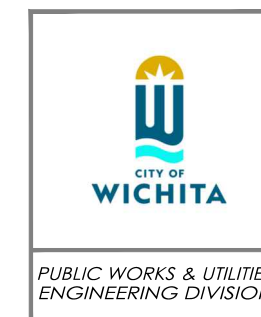
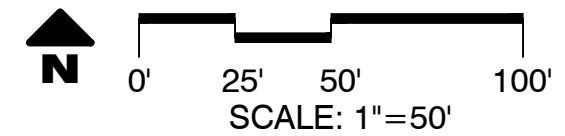
CITY ENGINEER'S OFFICE
CITY HALL - SEVENTH FLOOR
455 NORTH MAIN STREET
WICHITA, KANSAS 67202-1620
(316) 268-4501

SHEET

8 OF 14



ARTHUR B. SIM GOLF COURSE
 TOTAL AREAS IN SF: 1,143



TEX, SIM, MAC GOLF COURSES PATHWAY IMPROVEMENTS		
<small>CITY ENGINEER</small> PAUL GUNZELMAN		
<small>PROJECT NUMBER</small> XXX	<small>OCA NUMBER</small> XXX	<small>DATE</small> 1/31/2024
<small>CITY ENGINEER'S OFFICE</small> <small>CITY HALL - SEVENTH FLOOR</small> <small>455 NORTH MAIN STREET</small> <small>WICHITA, KANSAS 67202-1620</small> <small>(316) 268-4501</small>		<small>SHEET</small> 9 OF 14

FW17

FW18

S11 APPROX 150 SF

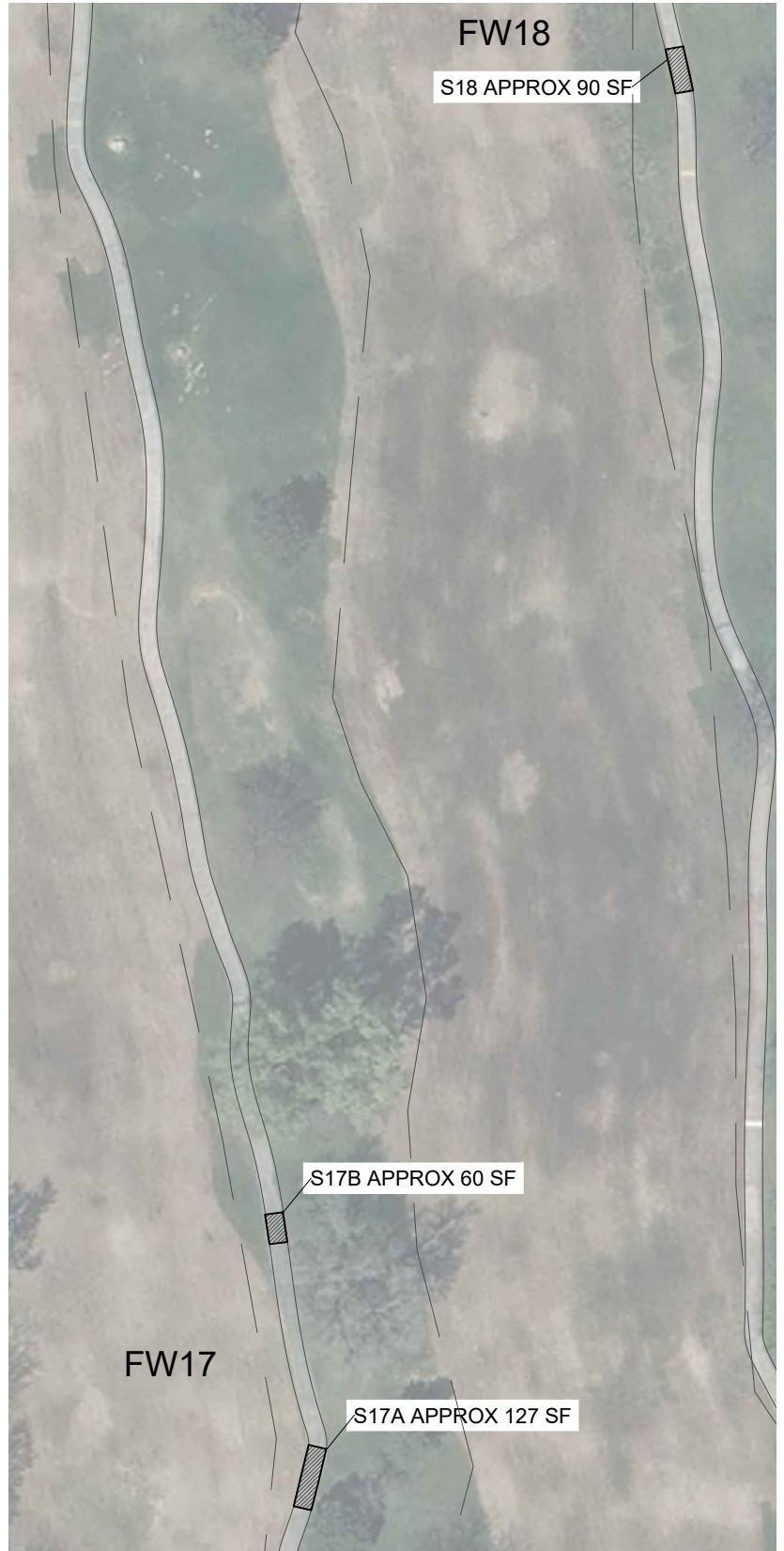
FW11

S2 APPROX 60 SF

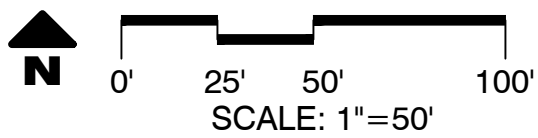
FW2

S17D APPROX 90 SF

S17C APPROX 62 SF

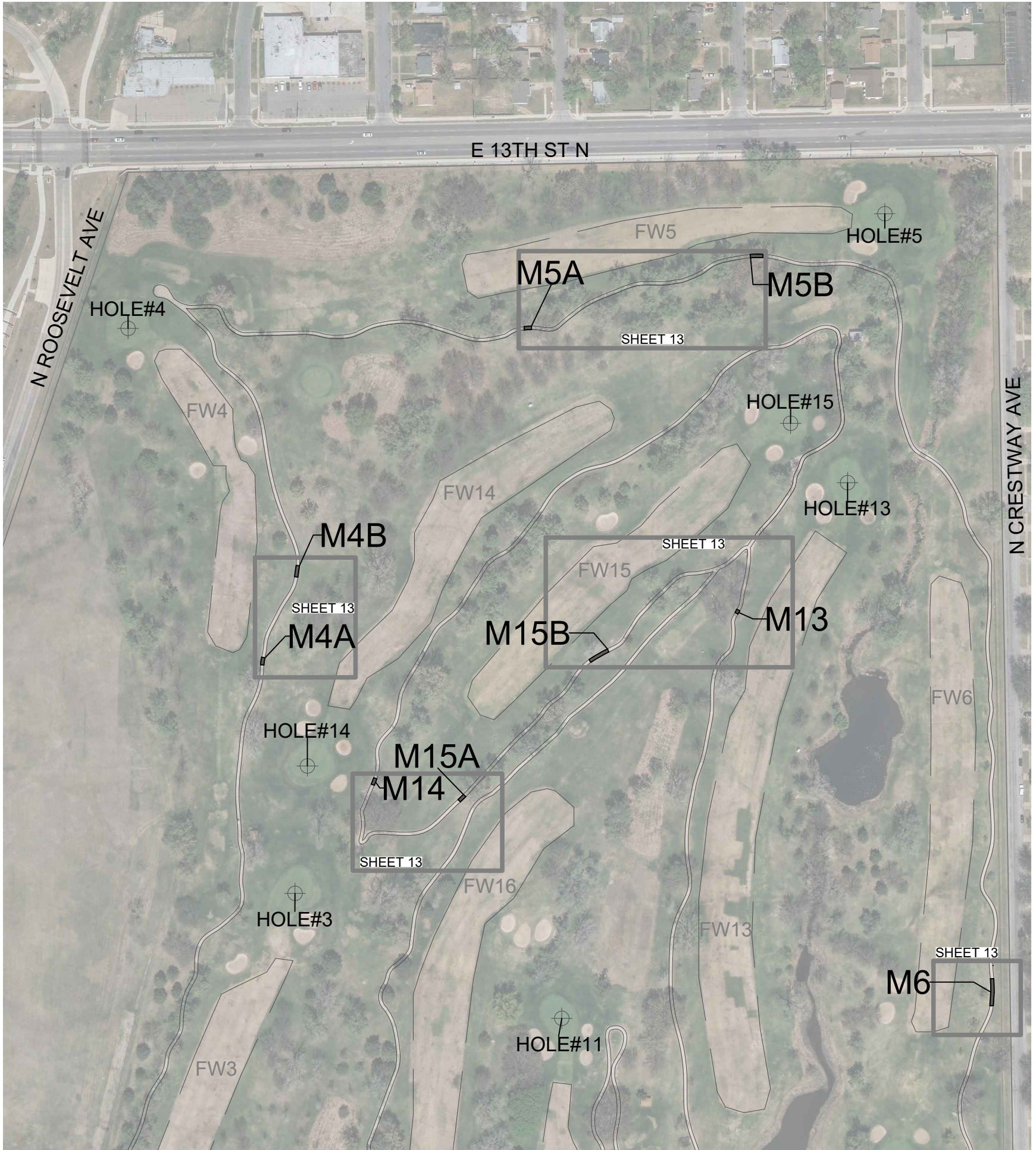


ARTHUR B. SIM GOLF COURSE
 TOTAL AREAS IN SF: 1,143



TEX. SIM, MAC GOLF COURSES PATHWAY IMPROVEMENTS		
CITY ENGINEER PAUL GUNZELMAN		
PROJECT NUMBER XXX	OCA NUMBER XXX	DATE 1/31/2024
CITY ENGINEER'S OFFICE CITY HALL - SEVENTH FLOOR 455 NORTH MAIN STREET WICHITA, KANSAS 67202-1620 (316) 268-4501		SHEET 10 OF 14

MACDONALD GOLF COURSE
 TOTAL AREAS IN SF: 2,930



TEX. SIM. MAC GOLF COURSE PATHWAY IMPROVEMENTS

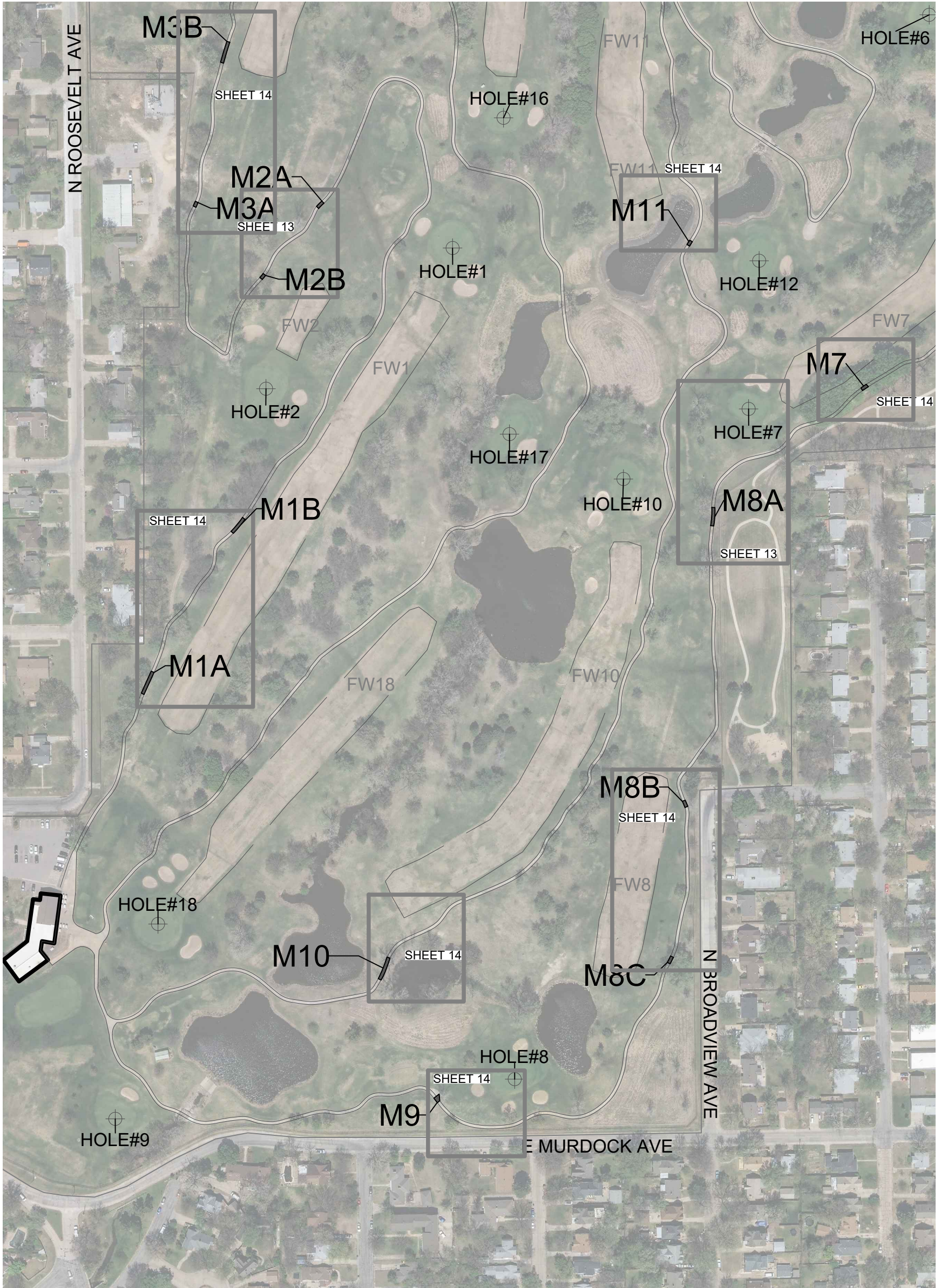
CITY ENGINEER
PAUL GUNZELMAN

PROJECT NUMBER	OCA NUMBER	DATE
XXX	XXX	1/31/2024

CITY ENGINEER'S OFFICE
 CITY HALL - SEVENTH FLOOR
 455 NORTH MAIN STREET
 WICHITA, KANSAS 67202-1620
 (316) 268-4501

SHEET
11 OF 14

MACDONALD GOLF COURSE
 TOTAL AREAS IN SF: 2,930



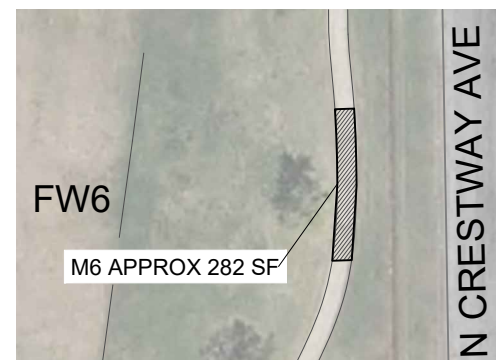
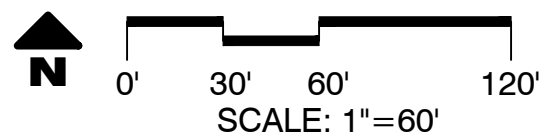
CITY OF WICHITA

PUBLIC WORKS & UTILITIES
 ENGINEERING DIVISION

TEX. SIM. MAC GOLF COURSE PATHWAY IMPROVEMENTS CITY ENGINEER PAUL GUNZELMAN		
PROJECT NUMBER	OCA NUMBER	DATE
XXX	XXX	1/31/2024
CITY ENGINEER'S OFFICE CITY HALL - SEVENTH FLOOR 455 NORTH MAIN STREET WICHITA, KANSAS 67202-1620 (316) 268-4501		SHEET 12 OF 14



MACDONALD GOLF COURSE
TOTAL AREAS IN SF: 2,930



CITY OF WICHITA
PUBLIC WORKS & UTILITIES
ENGINEERING DIVISION

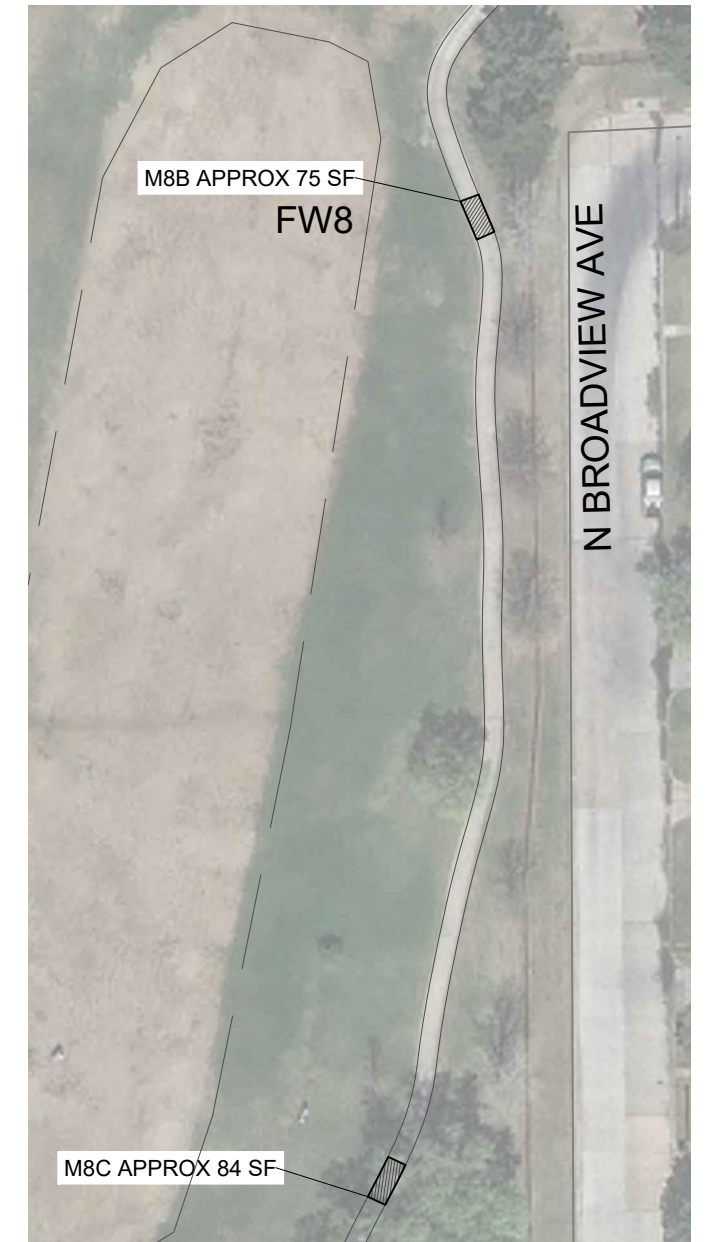
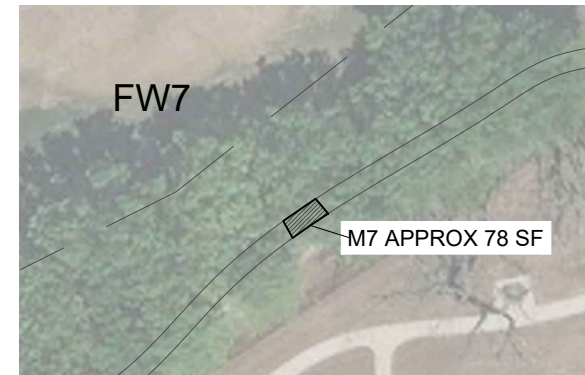
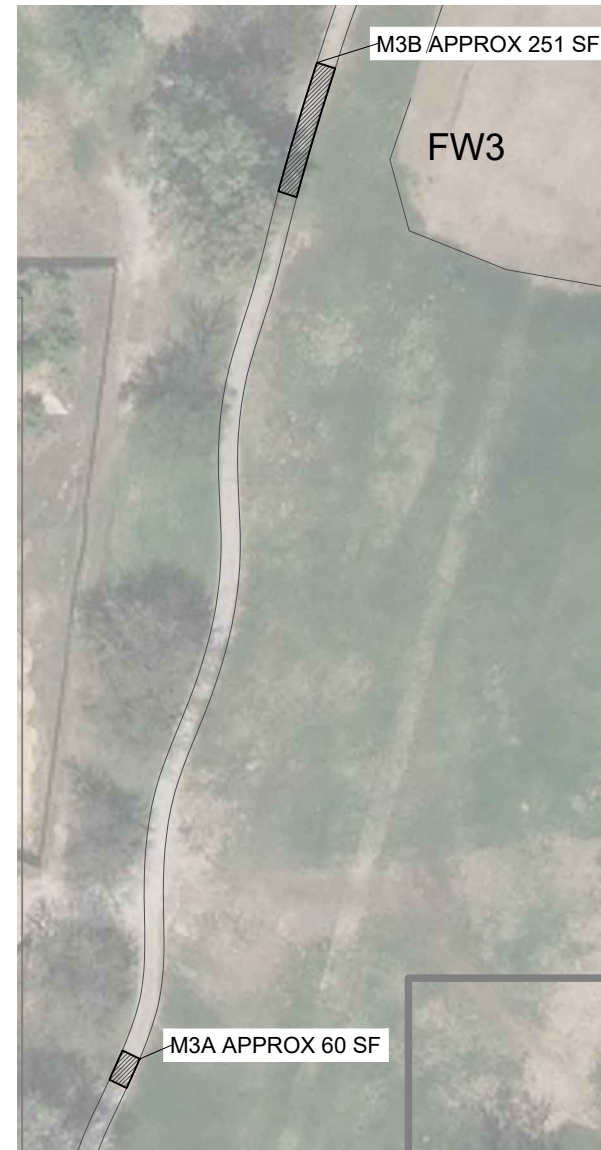
TEX, SIM, MAC GOLF COURSES PATHWAY IMPROVEMENTS

CITY ENGINEER
PAUL GUNZELMAN

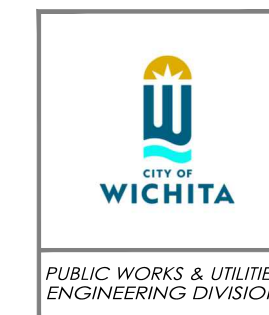
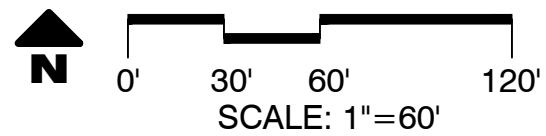
PROJECT NUMBER	OCA NUMBER	DATE
XXX	XXX	1/31/2024

CITY ENGINEER'S OFFICE
CITY HALL - SEVENTH FLOOR
455 NORTH MAIN STREET
WICHITA, KANSAS 67202-1620
(316) 268-4501

SHEET
13 OF 14



MACDONALD GOLF COURSE
TOTAL AREAS IN SF: 2,930



TEX, SIM, MAC GOLF COURSES PATHWAY IMPROVEMENTS CITY ENGINEER PAUL GUNZELMAN		
PROJECT NUMBER XXX	OCA NUMBER XXX	DATE 1/31/2024
CITY ENGINEER'S OFFICE CITY HALL - SEVENTH FLOOR 455 NORTH MAIN STREET WICHITA, KANSAS 67202-1620 (316) 268-4501		SHEET 14 OF 14