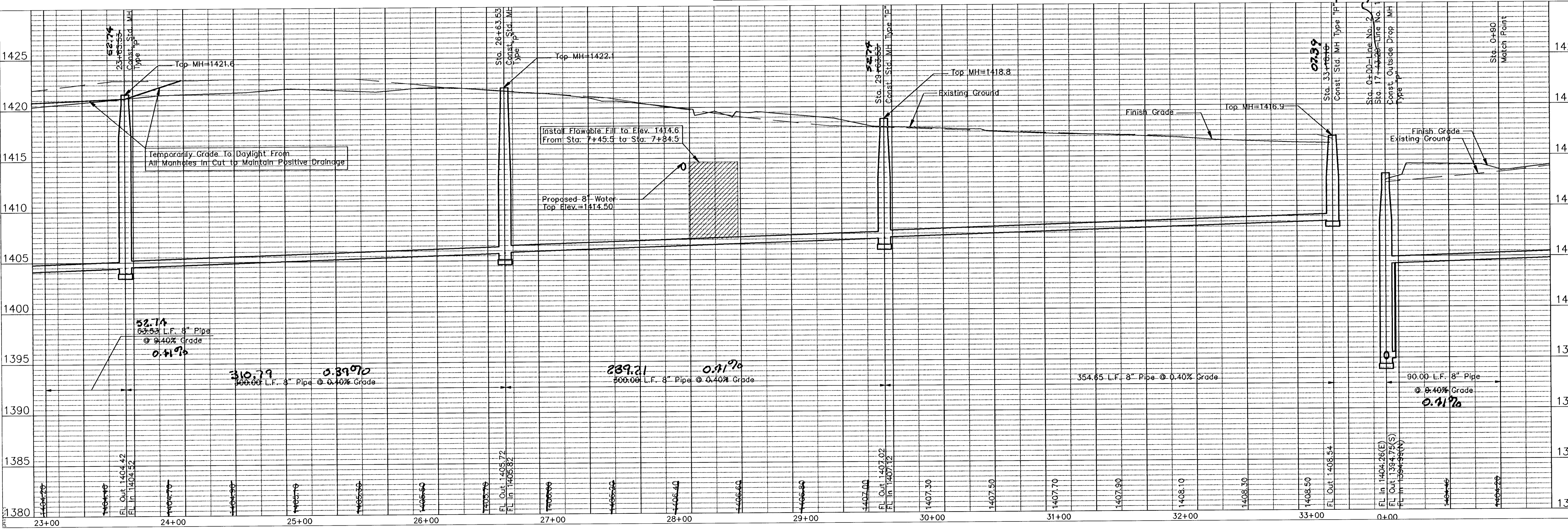
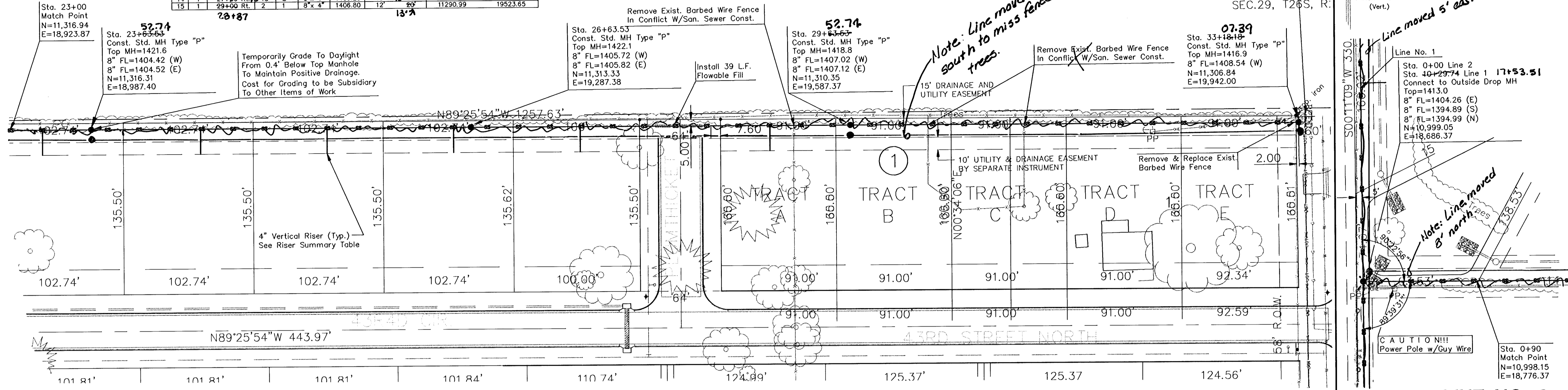
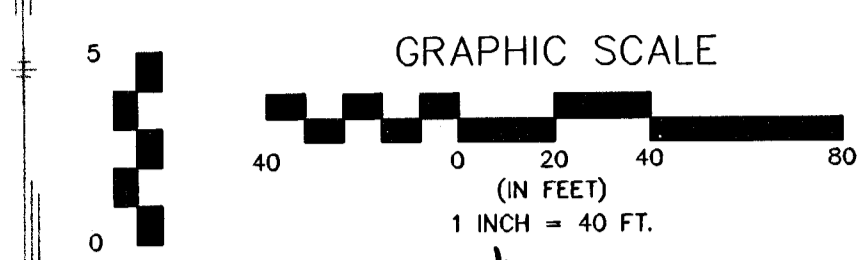


SANITARY SEWER RISER SUMMARY											
No.	Line	Sta./Dir.	Lot No.	Block No.	Saddle Size	8" Main FL	4" Pipe	Information Only Approx. Length		Coordinates at End of 4" Pipe	
							Vert.	Horiz.	Northing	Easting	
10	1	23+28 RL	14	2	8" x 4"	1404.30	16'	13' 20"	11296.69	18948.67	
11	1	24+60 RL	15	2	8" x 4"	1404.90	16'	13' 20"	11293.45	19073.67	
12	1	25+28 RL	16	2	8" x 4"	1405.30	17'	13' 20"	11294.46	19173.66	
13	1	26+58 RL	17	2	8" x 4"	1405.70	13'	13' 20"	11293.47	19273.66	
14	1	27+58 RL	18	2	8" x 4"	1406.20	15'	13' 20"	11292.47	19373.65	
15	1	29+00 RL	2	1	8" x 4"	1406.80	12'	13' 20"	11290.99	19523.65	



SAND PLUM ADDITION
 SANITARY SEWER IMPROVEMENTS
 SEWER LINE NO. 1 & 2
 CITY OF WICHITA, KANSAS
 JAMES ARMOUR, P.E. - CITY ENGINEER
 Proj# 468-53822 O.C.A.# 744073

POE & ASSOCIATES, INC.
 CONSULTING ENGINEERS
 5840 E. Central, Suite 200 • Wichita, KS 67208-4242
 Phone 316/685-4114 • FAX 316/685-4444

FINAL

Designed By: T. Austin
 Drawn By: S. Schmidt
 P.E. Job No.: 02153-03
 Date: December, 2004

Sheet
 4 of 14

021502.03.02155-03.04e-swg.dwg Tue Jan 04 08:03:46 2005 Steve Schmidt-Poe & Associates of Kansas, Inc.