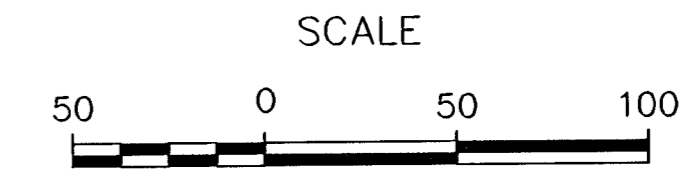
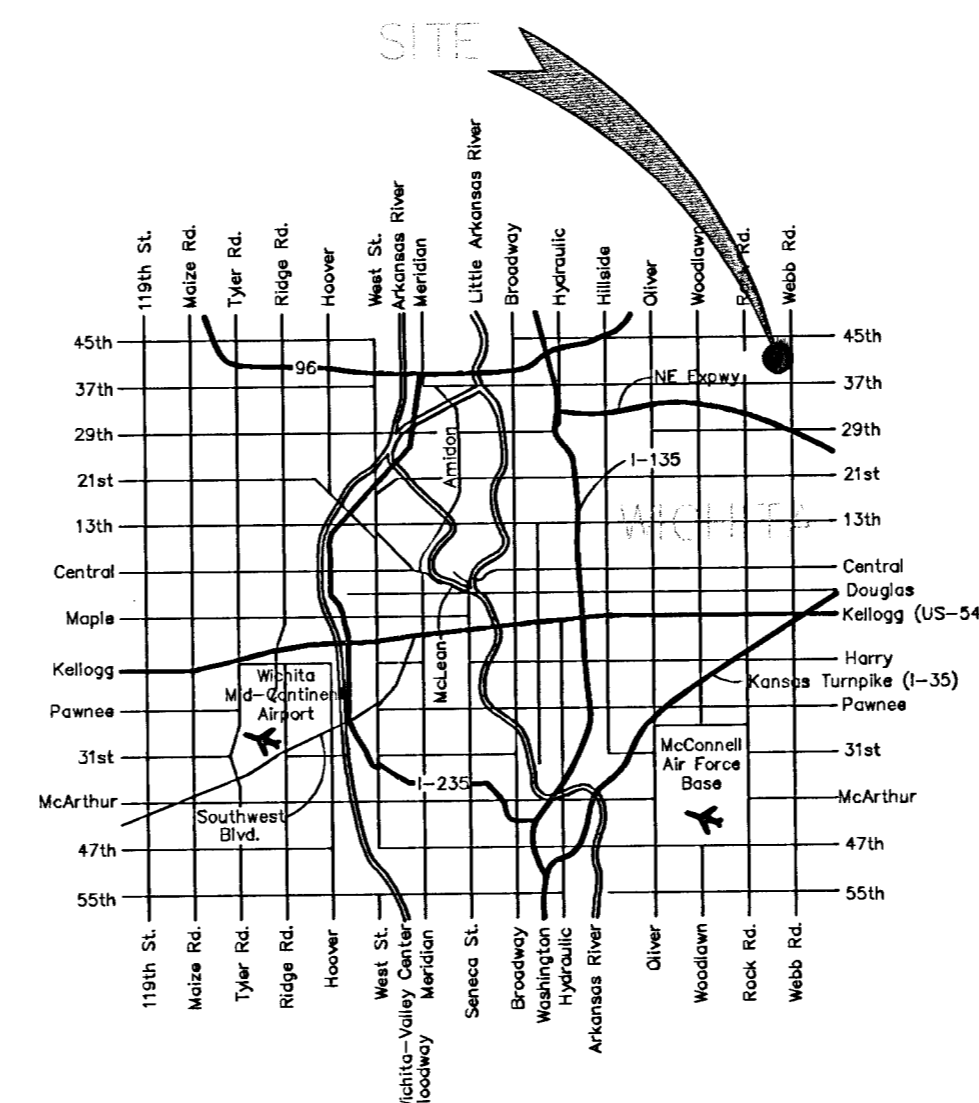
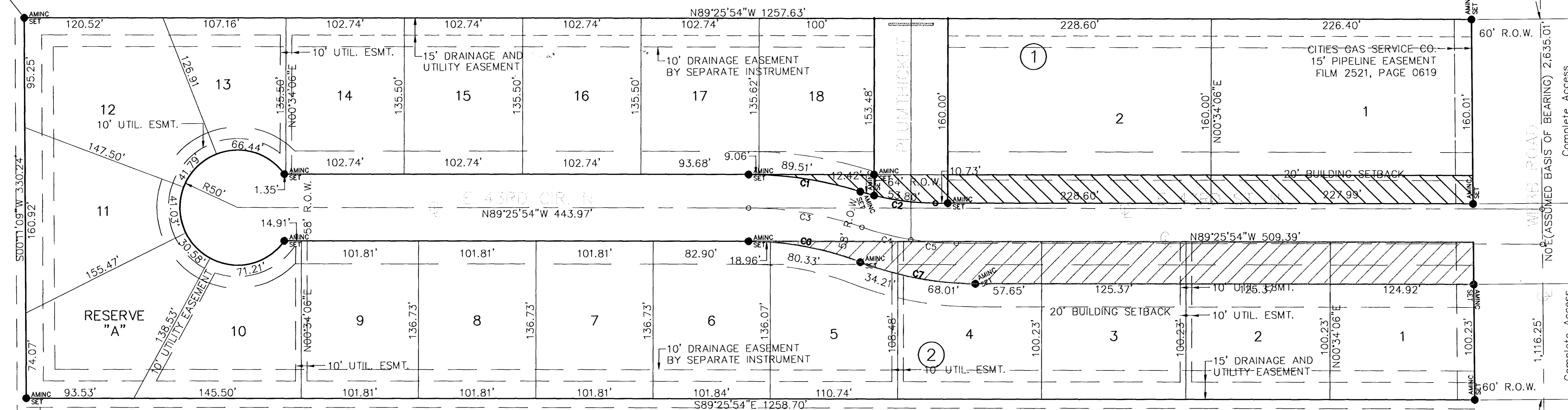


RIGHT-OF-WAY VACATION EXHIBIT SAND PLUM ADDITION WICHITA, SEDGWICK COUNTY, KANSAS



LEGEND

- = Right-of-Way to be Vacated
- = Proposed Right-of-Way



VICINITY MAP

<p>POE & ASSOCIATES, INC. CONSULTING ENGINEERS 5840 E. Central, Suite 200 • Wichita, KS 67208-4242 Phone 316/685-4114 • FAX 316/685-4444</p>	<p>PE</p>	<p>FINAL</p>	<p>Designed By: T. Austin Drawn By: S. Schmidt Poe Job No.: 02153-03 Date: December 2004</p>	<p>SAND PLUM ADDITION SANITARY SEWER IMPROVEMENTS VACATION EXHIBIT CITY OF WICHITA, KANSAS JAMES ARMOUR, P.E. - CITY ENGINEER Proj.# 468-83822 O.C.A.# 744073</p>
<p>14-10-03-08</p>	<p>14 of 14</p>	<p>981' 02"</p>	<p>SE COR., NE 1/4 SEC. 29, T26S, R2E</p>	<p>1323' 75"</p>

02102153 02153-03 ss-vacate.dwg Tue Jan 04 08:08:16 2005 Steve Schmidt-Poe & Associates of Kansas, Inc.