

Lat. 1, Main 15, Sanitar Sewer #23 SANITARY SEWER IMPROVEMENTS

to serve

RIO VISTA ESTATES 4TH CITY OF WICHITA, KANSAS

James Armour, P.E. City Engineer

Project Number O.C.A. Number

468-83842

744112

GENERAL NOTES:

- Contractor will be required to provide notice to utility companies a minimum of twenty-four (24) hours prior to any excavation, as follows:

Kansas One-Call 887-2470

The Contractor must notify the following in case of an emergency:

| | |
|------------------------------------|----------------|
| Cox Communications | 262-4270 |
| Kansas Gas Service | 1-888-482-4950 |
| Westar Energy | 383-8650 |
| Aquila Energy | 1-800-303-0357 |
| Southwestern Bell | 268-2245 |
| City of Wichita Water Dept. | 268-4563 |
| City of Wichita Sewer Maint. | 268-4024 |
| City of Wichita Storm Sewer Maint. | 268-4090 |
| City of Wichita Traffic Maint. | 268-4034 |
| Conoco Pipeline Co. | 1-800-231-2551 |
| Williams Pipeline Co. | 523-6600 |
| Phillips Pipeline Co. | 1-800-766-8230 |

- Utility service lines, poles, valve boxes, meters, and enclosures are to be adjusted as necessary by others prior to construction unless the plans specifically call for their adjustment by the Contractor or unless the plans specifically identify a utility to be adjusted by its owner during construction. Existing utilities and their location, as shown on the plans, represent the best information obtainable for design. The Contractor will be required to work around existing utilities within the right-of-way which do not conflict with proposed construction.
- Rubble from the removal of miscellaneous structures and excess excavation which is to be wasted shall be disposed of on sites to be provided by the Contractor. These sites shall be approved by the Engineer as to suitability, appearance on site location. Locations, in the opinion of the Engineer, will leave an unsightly appearance will not be approved. All disposal sites must be approved by the Kansas Department of Health and Environment. Material either stockpiled or disposed of in a flood plain would require a Kansas State Board of Agriculture permit. Any material dumped in waters of the United States or wetlands is subject to U.S. Corps of Engineers permitting regulations. Any material buried or stockpiled beyond approved construction limits would require additional archaeological investigations unless buried in a previously approved borrow location.
- Trees and shrubs in public right-of-way which are in direct conflict with proposed new construction shall be removed by the Contractor with the Engineer's approval. Trees and shrubs which are not in direct conflict with proposed new construction shall be saved and protected from damage.
- The Contractor shall give all property owners and/or tenants of developed property abutting the construction of this project a minimum of ten (10) days advance notice prior to start of construction.
- The Contractor shall be responsible for preserving property irons. The Contractor will be required to re-establish any property irons which are damaged or destroyed by his construction operations. Such irons shall be re-established by a licensed land surveyor in accordance with state laws.
- Contractor shall not start work on the project until the project inspector is assigned to the project and is present on the site. Any work done without inspection will be required to be uncovered for inspection.
- When connecting to existing manhole or stub, the contractor shall reshape manhole bottom or adjust the existing stub's alignment or elevation as necessary. Cost shall be subsidiary to project.
- The Contractor shall be responsible for maintaining continuous flow of sewage through construction. Contractor's proposed method for maintaining sewage flow shall be approved by the Engineer. Cost of maintaining flow of sewage through construction will not be paid for directly and this cost shall be considered as subsidiary to the other pay items of work.
- All areas disturbed by construction operations shall be temporary seeded in accordance with City specs. Contractor to prepare ground to City specs.
- Excess trench material shall be re-distributed over new sanitary sewer line, especially where fill is indicated. See "Easement Grading" sheet for notes.

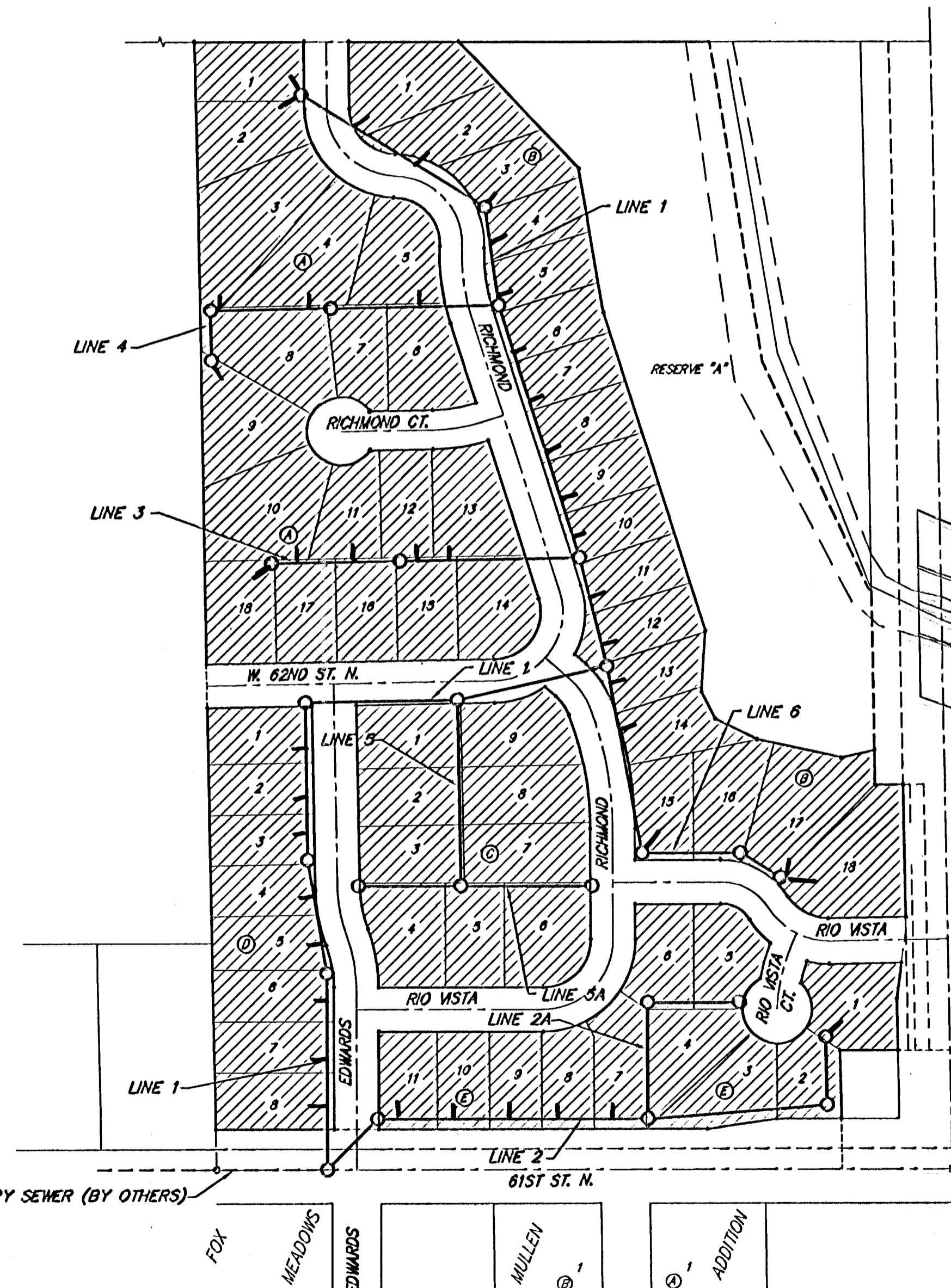
Benchmark

BENCHMARK:
R.R. SPIKE IN HLP, 150' E. & 30'
S. OF THE S.W. COR., S.E. 1/4,
SEC. 12-26-1W.
ELEV. = 1338.96 M.S.L.
ELEV. = 151.56 City Datum

"0" IN OPEN, TOP FLANGE OF
FIRE HYDRANT AT THE S.W.
CORNER OF 61ST. ST. N. &
MERIDIAN AVE.
ELEV. = 1339.16 M.S.L.
ELEV. = 151.76 City Datum

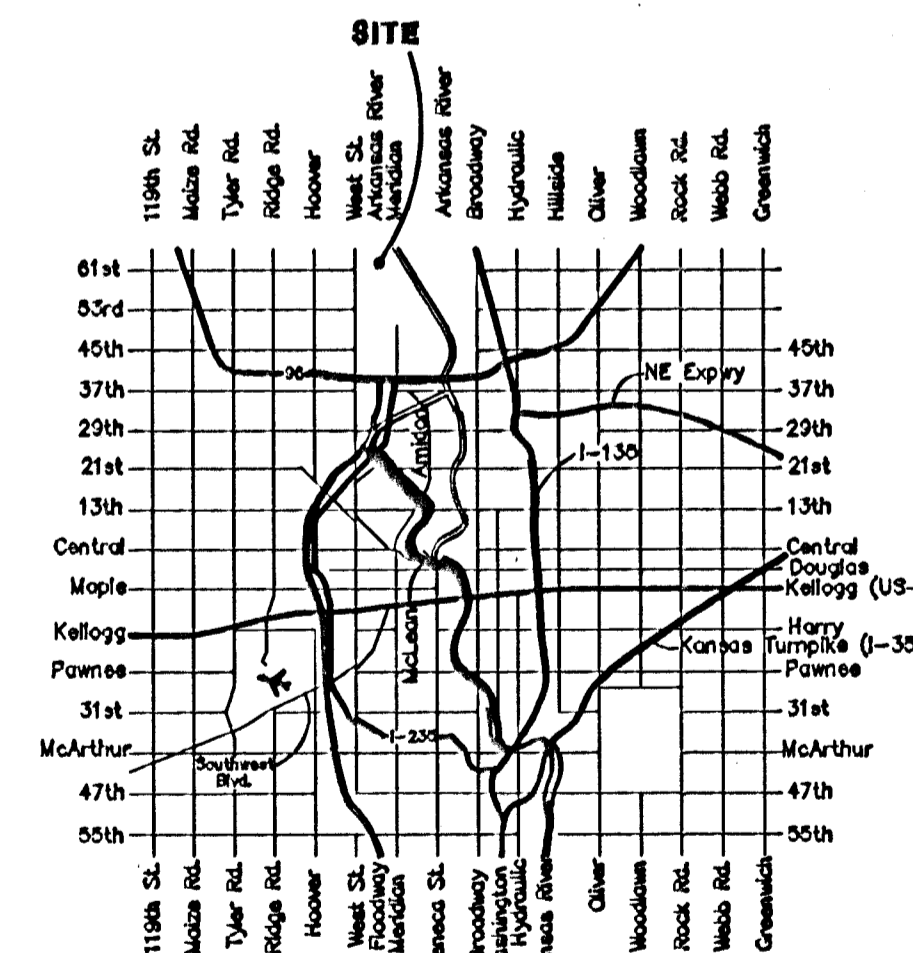
Sheet Index

| | |
|-------------------------|-------|
| Title Sheet | 1 |
| Line 1 | 2-4 |
| Line 2 | 5 |
| Line 2A | 6 |
| Line 3 | 7 |
| Line 4 | 8 |
| Lines 5 & 5A | 9 |
| Line 6 | 10 |
| Standard Manhole Detail | 11 |
| Ring & Cover Detail | 12 |
| Riser Detail | 13 |
| Easement Grading | 14 |
| Erosion Control BMP's | 15-18 |
| Copy of Plat | 19 |

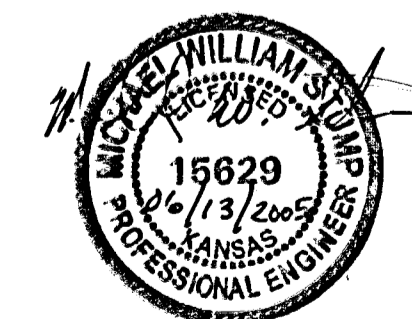


Nowak Construction Co, Inc. - Contractor
Wilson, City - Inspector
Released 6/14/06
As-Built
Risers + Stubs
.pdf by JDL 5/23/07

6/27/06
Note: Early hookups must
pump until Main 15 completed.



Vicinity Map



Benefit District

June 2005



Baughman Company, P.A. 315 Ellis St. Wichita, KS 67211 P.316.262.7271 F.316.262.0149
ENGINEERING | SURVEYING | PLANNING | LANDSCAPE ARCHITECTURE