

**BENCHMARK:**  
 R.R. SPIKE IN HLP, 150' E. & 30'  
 S. OF THE S.W. COR., S.E. 1/4,  
 SEC. 12-26-1W  
 ELEV. = 1339.96 M.S.L.  
 ELEV. = 151.56 City Datum

"0" IN OPEN, TOP FLANGE OF  
 FIRE HYDRANT AT THE S.W.  
 CORNER OF 61ST. ST. N. &  
 MERIDIAN AVE.  
 ELEV. = 1339.16 M.S.L.  
 ELEV. = 151.76 City Datum

Sta. 11+20.48 to Sta. 21+26.82, Line  
 1, Sanitary Sewer trench shall be  
 sand backfilled and flushed. Cost  
 incidental to cost of new sewer pipe.

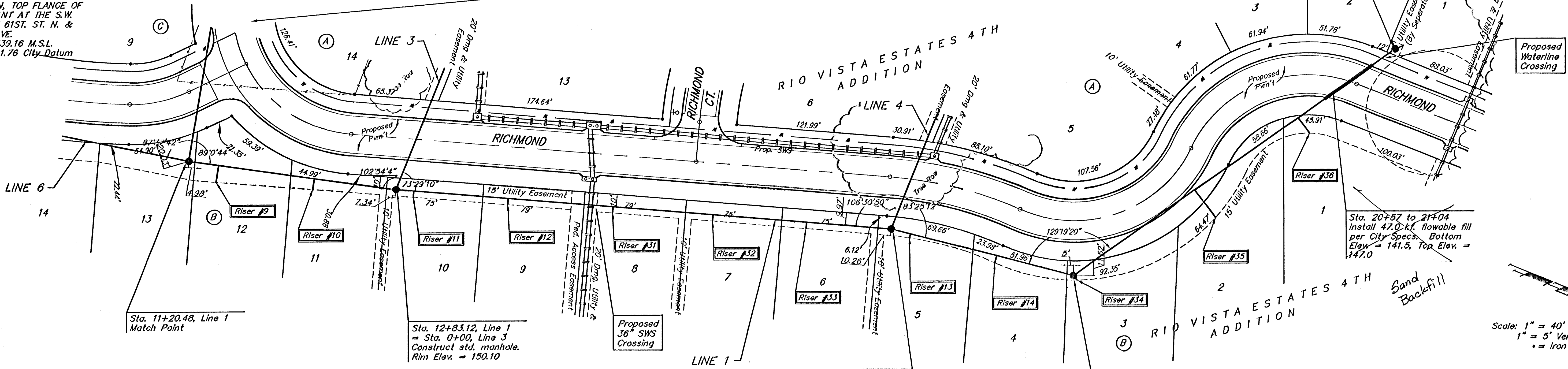
Sta. 21+25.18, End Line 1  
 Construct std. manhole.  
 Rim Elev. = 149.30  
 2 - 4" Stubs (NW&SW)  
 L=8.0' (NW), L=8.0' (SW)

Sta. 20+57 to 21+04  
 Install 47.0 kcf flowable fill  
 per City Specs. Bottom  
 Elev. = 141.5, Top Elev. =  
 147.0

Sta. 12+83.12, Line 1  
 = Sta. 0+00, Line 3  
 Construct std. manhole.  
 Rim Elev. = 150.10

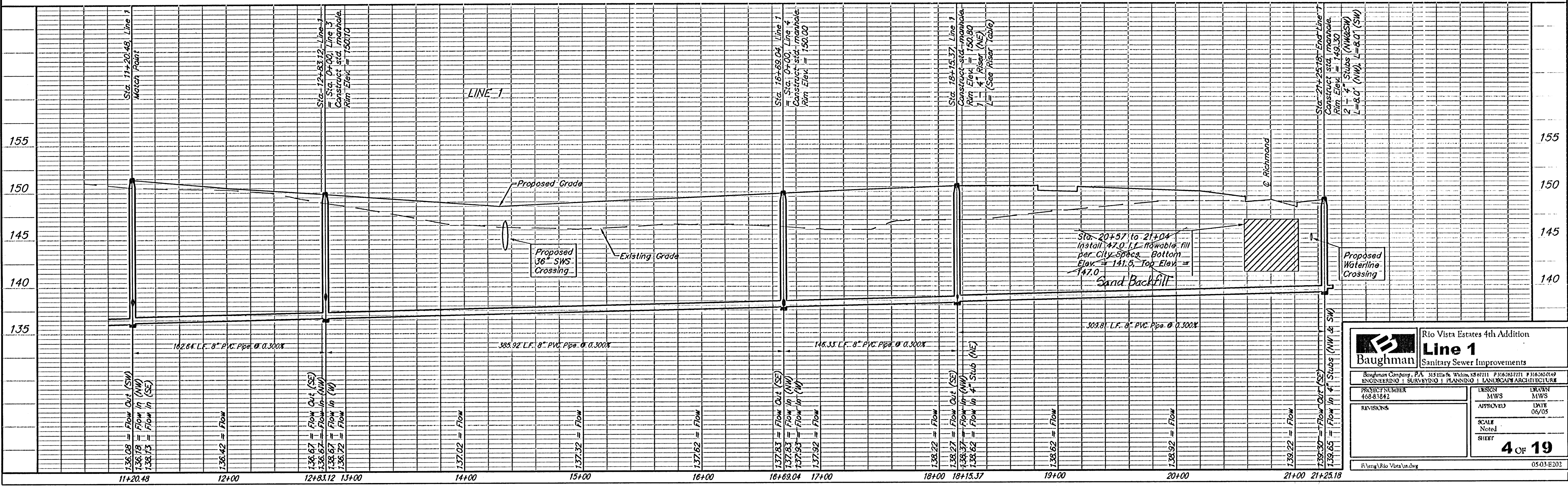
Sta. 16+69.04, Line 1  
 = Sta. 0+00, Line 4  
 Construct std. manhole.  
 Rim Elev. = 150.00

Sta. 18+15.37, Line 1  
 Construct std. manhole.  
 Rim Elev. = 150.80  
 1 - 4" Riser (NE)  
 L= (See Riser Table)



SEWER SERVICE TABLE - See Sheet 6

Denotes Trees to be  
 Removed by the  
 Sanitary Sewer Contractor



Rio Vista Estates 4th Addition <b>Line 1</b> Sanitary Sewer Improvements	
Baughman Company, P.A. 315 Elm St. White, NJ 07871 P 916-262-7771 F 916-262-0149 ENGINEERING   SURVEYING   PLANNING   LANDSCAPE ARCHITECTURE	
PROJECT NUMBER 468-81842	DESIGN MWS APPROVED DATE 06/05
REVISIONS	SCALE Noted SHEET <b>4 OF 19</b>
Rio Vista Estates 4th Addition 0503-B202	