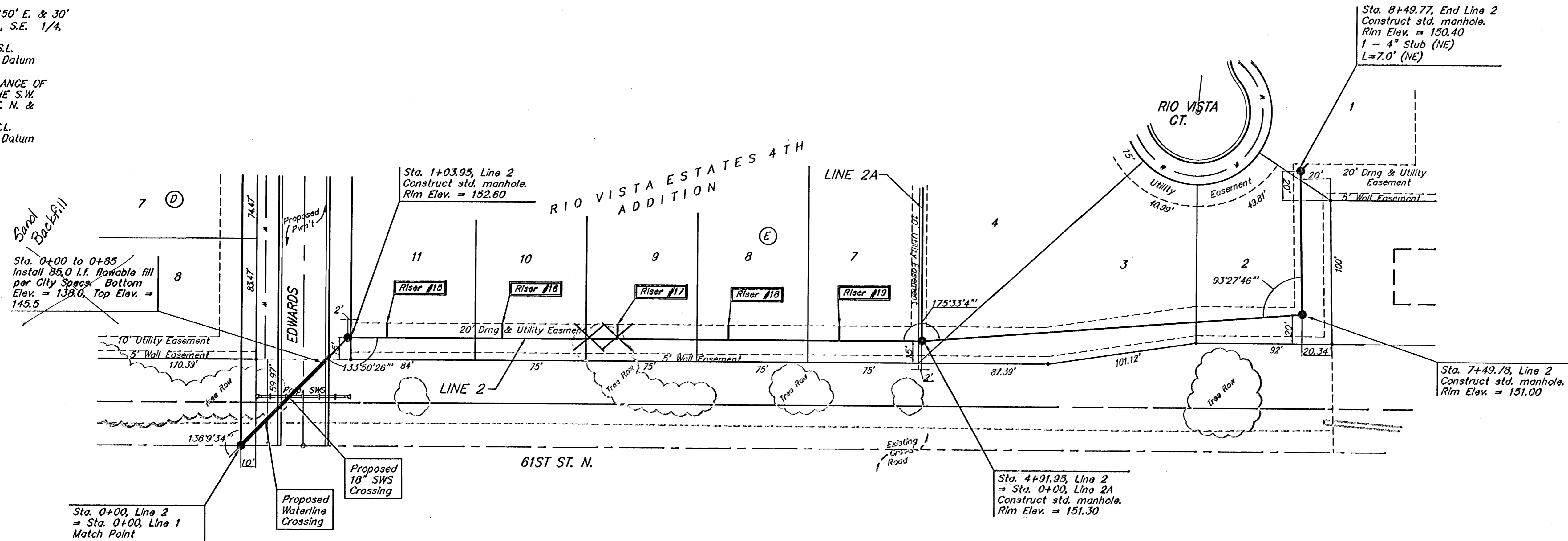


**BENCHMARK:**  
 R.R. SPIKE IN H.L.P. 150' E. & 30'  
 S. OF THE S.W. COR., S.E. 1/4,  
 SEC. 12-26-1W  
 ELEV. = 1338.98 M.S.L.  
 ELEV. = 151.56 City Datum

"0" IN OPEN, TOP FLANGE OF  
 FIRE HYDRANT AT THE S.W.  
 CORNER OF 61ST ST. N. &  
 MERIDIAN AVE.  
 ELEV. = 1339.16 M.S.L.  
 ELEV. = 151.76 City Datum



Scale: 1" = 40' Horizontal  
 1" = 5' Vertical  
 • = Iron

Denotes Trees to be  
 Removed by the  
 Sanitary Sewer Contractor

SEWER SERVICE TABLE - See Sheet 6

Station	Flow In (N)	Flow In (E)	Flow In (S)	Flow In (W)	Flow Out (N)	Flow Out (E)	Flow Out (S)	Flow Out (W)
0+00	132.26	134.25	132.62	132.26	132.26	134.25	132.62	132.26
1+03.95	137.96	138.06	138.06	137.96	137.96	138.06	138.06	137.96
2+00	138.35			138.35	138.35			138.35
3+00	138.65			138.65	138.65			138.65
4+00	138.95			138.95	138.95			138.95
4+91.95	139.23	139.33	139.33	139.23	139.23	139.33	139.33	139.23
6+00	139.65			139.65	139.65			139.65
7+00	139.95			139.95	139.95			139.95
7+49.78	140.10	140.20	140.20	140.10	140.10	140.20	140.20	140.10
8+00	140.35			140.35	140.35			140.35
8+49.77	140.50	140.55	140.55	140.50	140.50	140.55	140.55	140.50

Proposed Grade  
 Existing Grade

103.95 L.F. 8" Pvc @ 3.333%

388.00 L.F. 8" PVC Pvc @ 0.300%

297.85 L.F. 8" PVC Pvc @ 0.300%

100.00 L.F. PVC Pvc @ 0.300%

**Baughman** Rio Vista Estates 4th Addition  
**Line 2**  
 Sanitary Sewer Improvements

Baughman Company, P.A. 315 Elm & Walnut Streets, P.O. Box 7771, Philadelphia, PA 19106-2019  
 ENGINEERING | SURVEYING | PLANNING | LANDSCAPE ARCHITECTURE

PROJECT NUMBER 468-81842	DESIGN MWS	DRAWN MWS
APPROVED	DATE 06/05	
REVISIONS	SCALE Noted	SHEET 5 OF 19

R:\eng\Rio Vista\dwg 05-03-E202