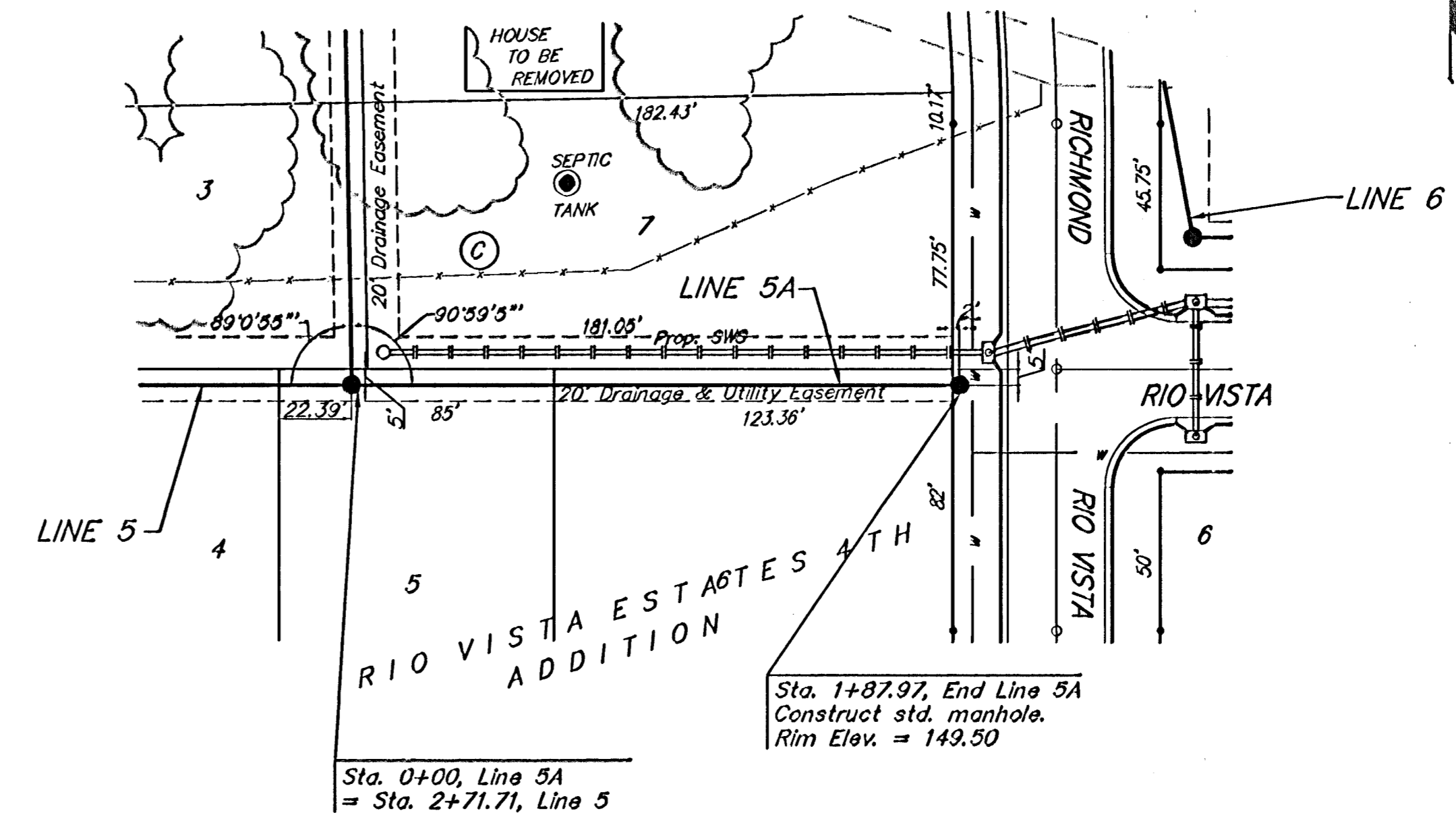
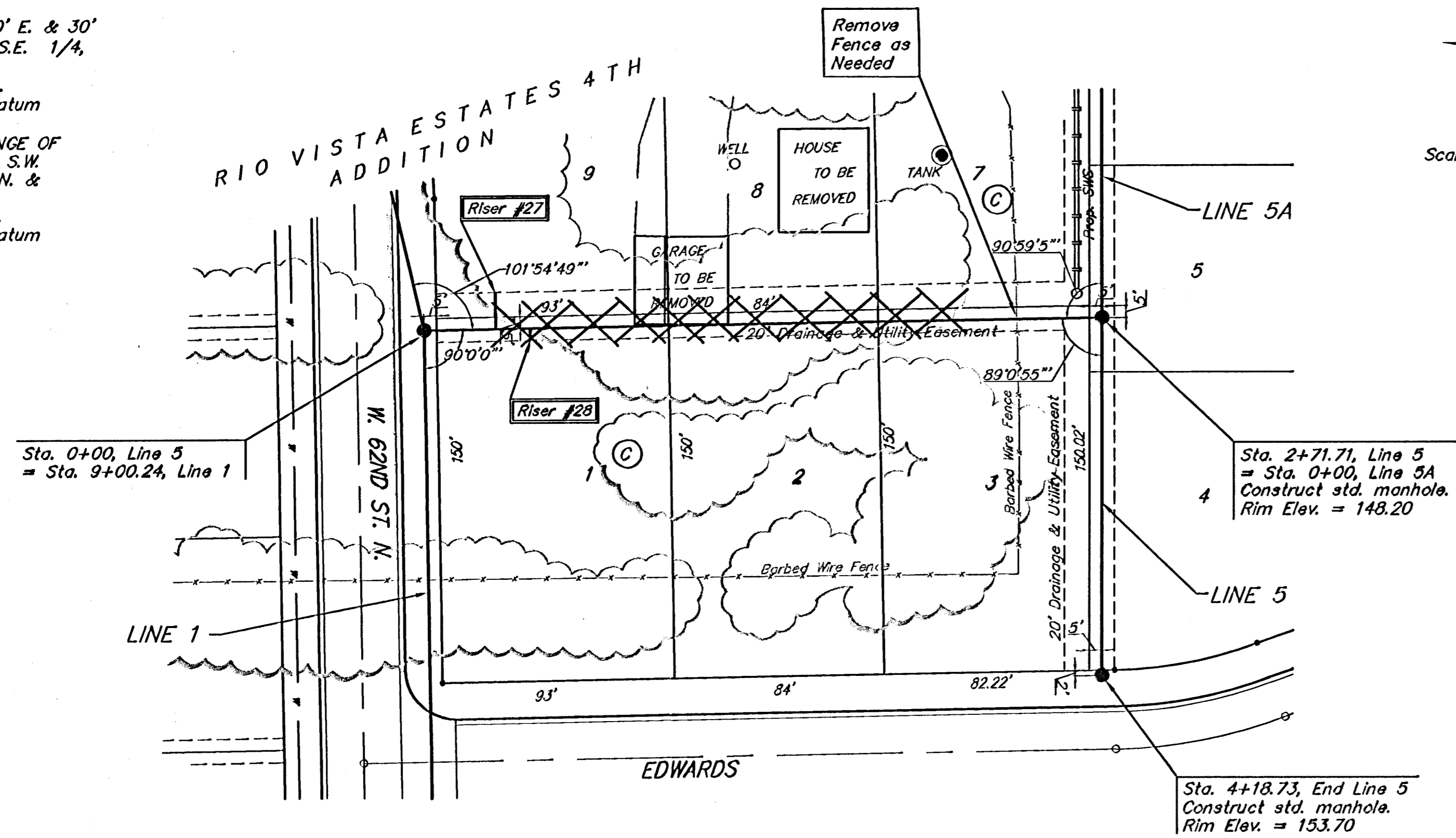


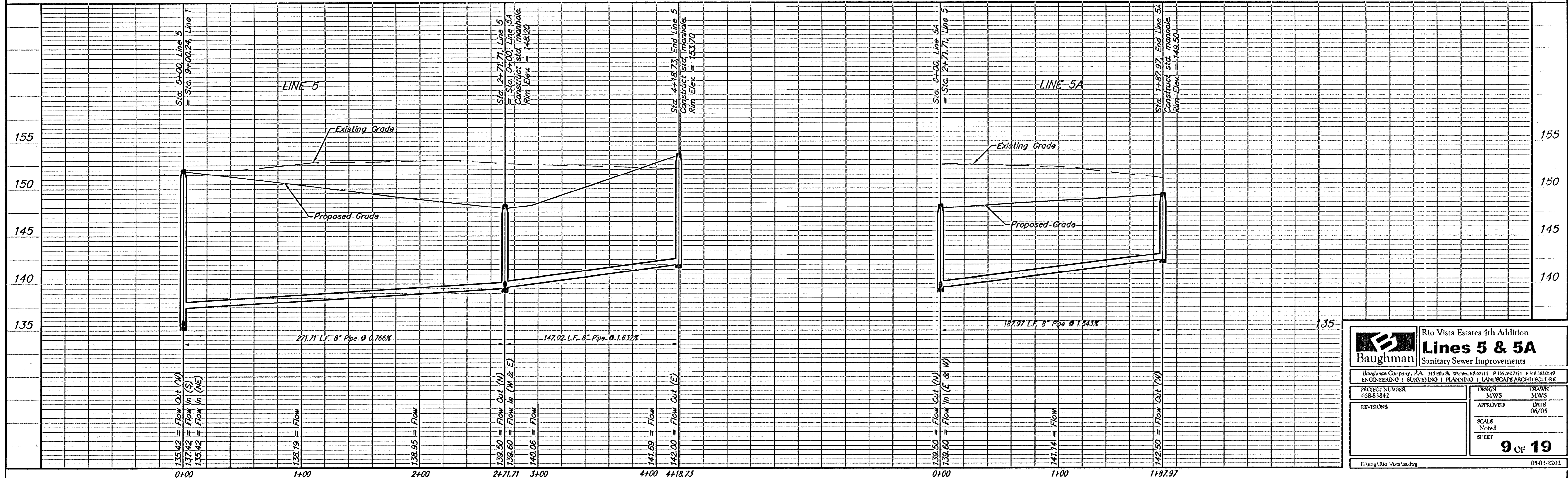
BENCHMARK:
 R.R. SPIKE IN HLP, 150° E. & 30'
 S. OF THE S.W. COR., S.E. 1/4,
 SEC. 12-26-1W.
 ELEV. = 1338.96 M.S.L.
 ELEV. = 151.56 City Datum

"0" IN OPEN, TOP FLANGE OF
 FIRE HYDRANT AT THE S.W.
 CORNER OF 61ST. ST. N. &
 MERIDIAN AVE.
 ELEV. = 1339.16 M.S.L.
 ELEV. = 151.76 City Datum



⊗ Denotes Trees to be
 Removed by the
 Sanitary Sewer Contractor

SEWER SERVICE TABLE - See Sheet 6



Baughman Rio Vista Estates 4th Addition
Lines 5 & 5A
 Sanitary Sewer Improvements

Bayhman Company, P.A. 315 Ellis St., Wilkes, NC 27171 P:315.252.7171 F:315.252.0149
 ENGINEERING | SURVEYING | PLANNING | LANDSCAPE ARCHITECTURE

PROJECT NUMBER 468-81842	DESIGN MWS	DRAWN MWS
REVISIONS	APPROVED	DATE 06/05
	SCALE Noted	SHEET 9 OF 19

F:\eng\Rio Vista\sdwg 05-03-B202