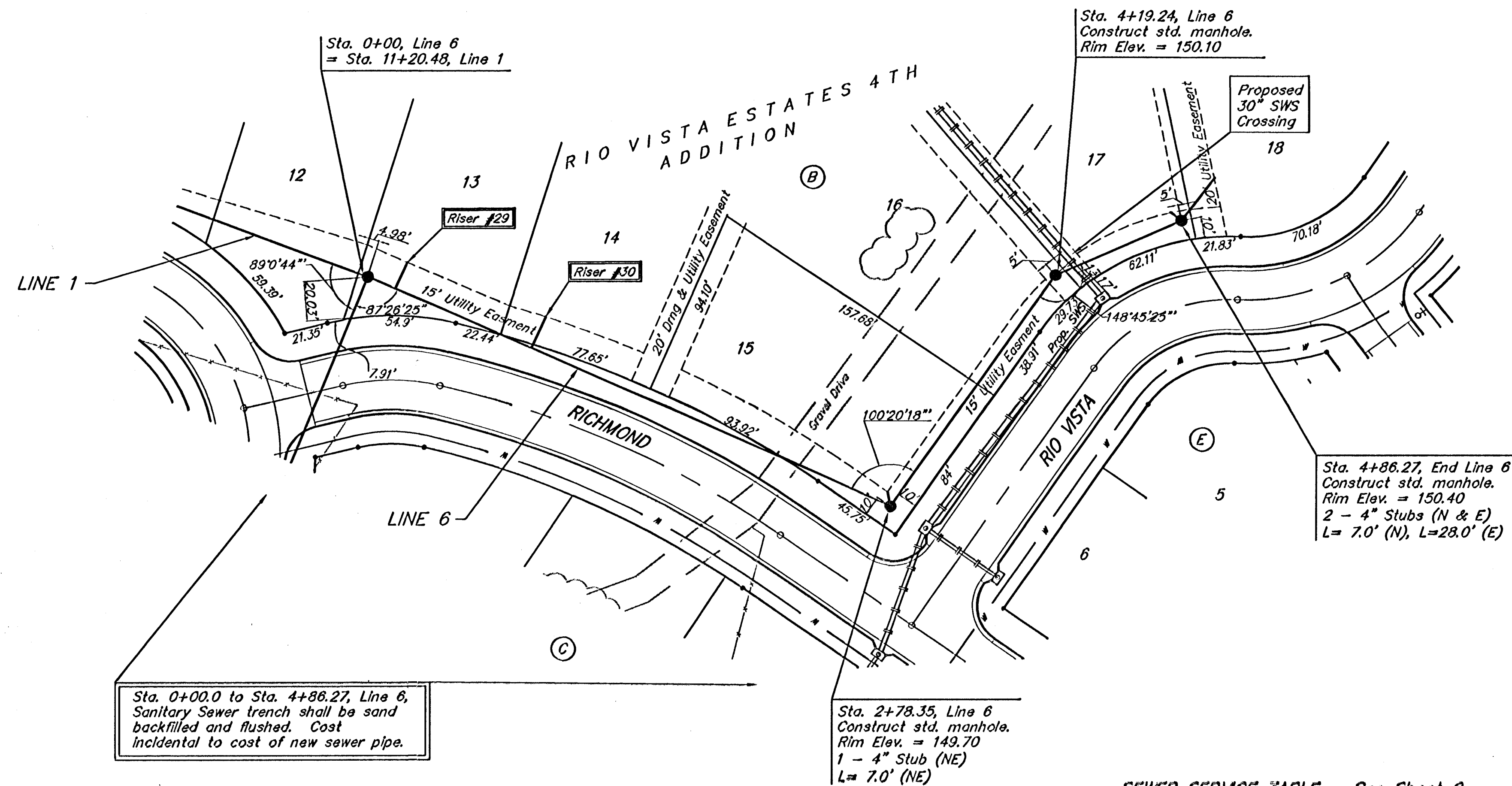


BENCHMARK:
 R.R. SPIKE IN HLP, 150' E. & 30'
 S. OF THE S.W. COR., S.E. 1/4,
 SEC. 12-26-1W.
 ELEV. = 1338.96 M.S.L.
 ELEV. = 151.56 City Datum

"0" IN OPEN, TOP FLANGE OF
 FIRE HYDRANT AT THE S.W.
 CORNER OF 61ST. ST. N. &
 MERIDIAN AVE.
 ELEV. = 1339.16 M.S.L.
 ELEV. = 151.76 City Datum



Scale: 1" = 40' Horizontal
 1" = 5' Vertical
 • = Iron

Sta. 0+00.0 to Sta. 4+86.27, Line 6,
 Sanitary Sewer trench shall be sand
 backfilled and flushed. Cost
 incidental to cost of new sewer pipe.

Sta. 2+78.35, Line 6
 Construct std. manhole.
 Rim Elev. = 149.70
 1 - 4" Stub (NE)
 L = 7.0' (NE)

Sta. 4+86.27, End Line 6
 Construct std. manhole.
 Rim Elev. = 150.40
 2 - 4" Stubs (N & E)
 L = 7.0' (N), L = 28.0' (E)

Denotes Trees to be
 Removed by the
 Sanitary Sewer Contractor

SEWER SERVICE TABLE - See Sheet 6

| Station | Flow In (NW) | Flow In (SE) | Flow In (SW) | Flow In (NE) | Flow In (E) | Flow In (S) | Flow In (W) | Flow In (N) | Flow In (NW) | Flow In (SE) | Flow In (SW) | Flow In (NE) | Flow In (E) | Flow In (S) | Flow In (W) | Flow In (N) |
|---------|--------------|--------------|--------------|--------------|-------------|-------------|-------------|-------------|--------------|--------------|--------------|--------------|-------------|-------------|-------------|-------------|
| 0+00 | 136.08 | 138.73 | 136.78 | 138.62 | 139.72 | | | | | | | | | | | |
| 1+00 | | | | | | | | | | | | | | | | |
| 2+00 | | | | | | | | | | | | | | | | |
| 2+78.35 | 139.50 | 139.60 | 139.60 | 139.65 | 139.65 | | | | | | | | | | | |
| 3+00 | | | | | | | | | | | | | | | | |
| 4+00 | | | | | | | | | | | | | | | | |
| 4+19.24 | 140.21 | 140.21 | 140.21 | 140.21 | 140.21 | | | | | | | | | | | |
| 4+86.27 | 140.50 | 140.50 | 140.50 | 140.50 | 140.50 | | | | | | | | | | | |

Baughman Rio Vista Estates 4th Addition
Line 6
 Sanitary Sewer Improvements

Baughman Company, P.A. 315 2116 St. Wichita, KS 67211 P316-2627721 F316-2624149
 ENGINEERING | SURVEYING | PLANNING | LANDSCAPE ARCHITECTURE

| | | |
|-----------------------------|----------------|--------------------------|
| PROJECT NUMBER 468-81843 | DESIGN MWS | DRAWN MWS |
| REVISIONS | APPROVED | DATE 06/05 |
| | SCALE Noted | SHEET 10 OF 19 |

F:\eng\Rio Vista\sdwg 05-03-E202