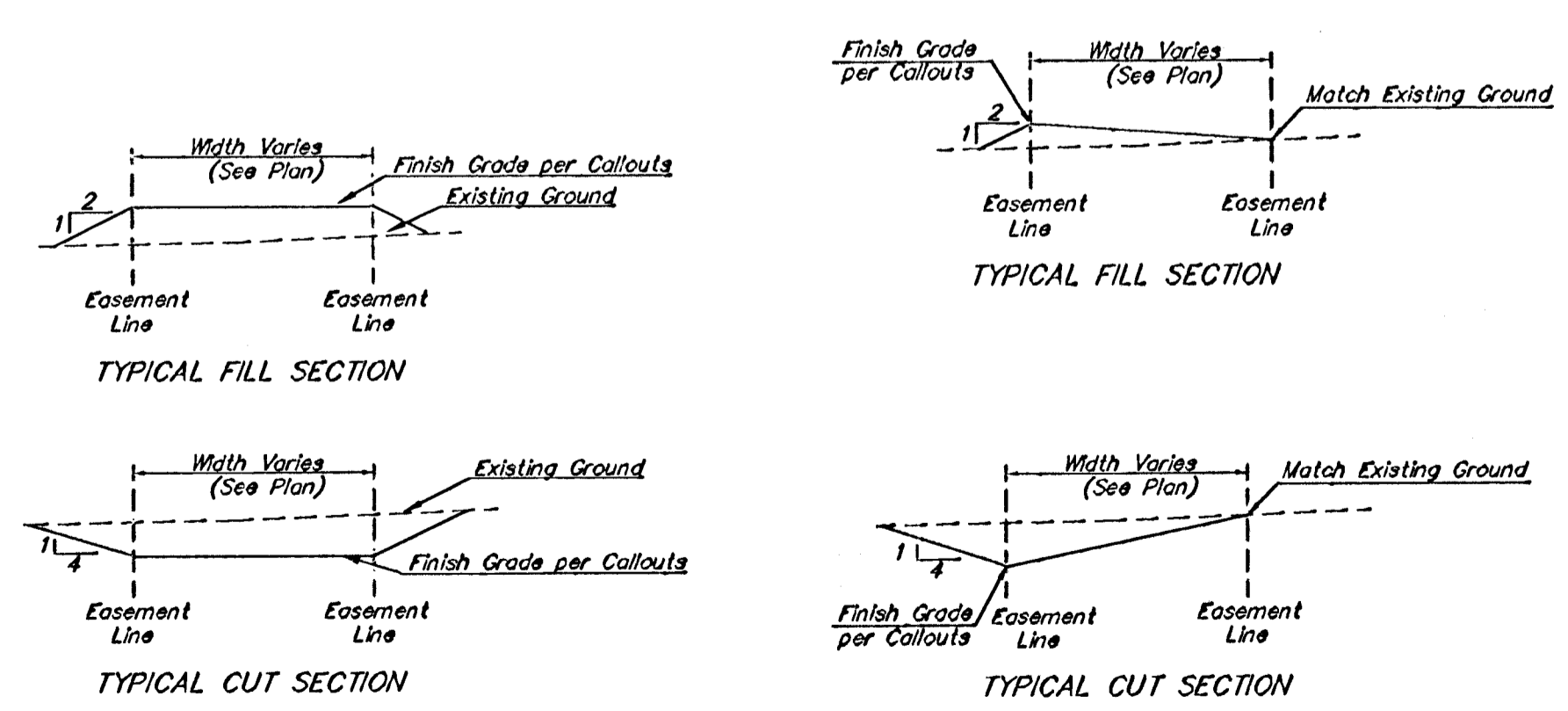
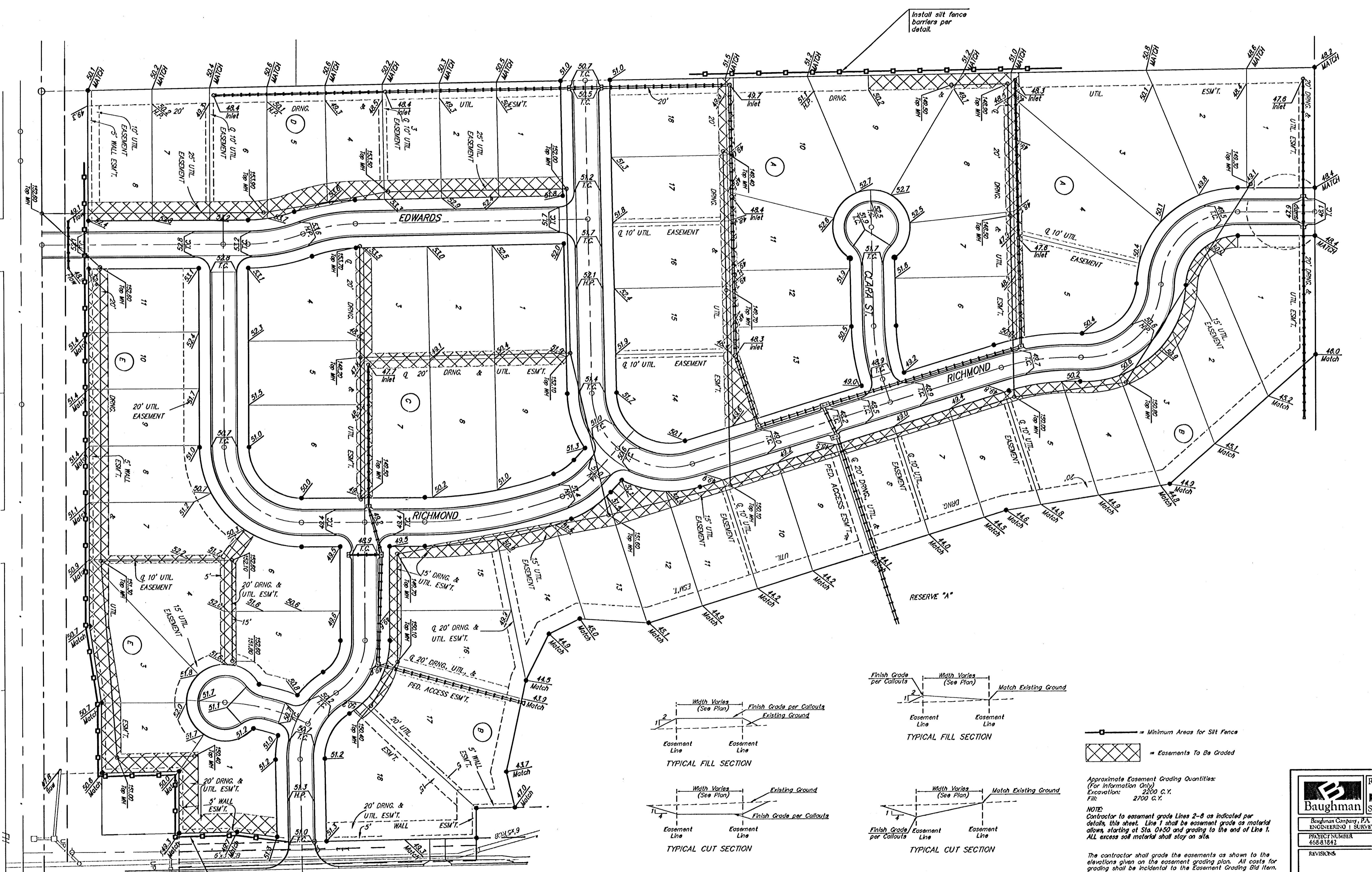
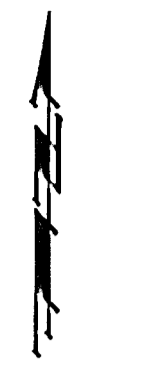


Scale: 1" = 60'



Minimum Areas for Silt Fence
Easements To Be Graded

Approximate Easement Grading Quantities:
(For Information Only)
Excavation: 2200 C.Y.
Fill: 2700 C.Y.

NOTE:
Contractor to easement grade Lines 2-8 as indicated per details, this sheet. Line 1 shall be easement grade as material allows, starting at Sta. 0+50 and grading to the end of Line 1. ALL excess soil material shall stay on site.

The contractor shall grade the easements as shown to the elevations given on the easement grading plan. All costs for grading shall be incidental to the Easement Grading Bid Item.

The contractor shall 'straight' grade the easements between the elevations given. Where a callout designates 'match', the contractor will grade to the existing ground elevation.

		Rio Vista Estates 4th Addition	
		Easement Grading Sanitary Sewer Improvements	
Baughman Company, P.A. 315 Elm & Wilkes, #802111 P 316-262-7711 F 316-262-0149 ENGINEERING SURVEYING PLANNING LANDSCAPE ARCHITECTURE		DESIGN	DRAWN
PROJECT NUMBER 468-81842		MWS	MWS
REVISIONS		APPROVED	DATE 06/05
		SCALE Noted	SHEET
		14 OF 19	
R:\Verg\Rio Vista\EsmGrade.dwg		05-03-E202	